

28

27

33

34

NOTE: Sit
the victim
in approx.

16

15

21

22

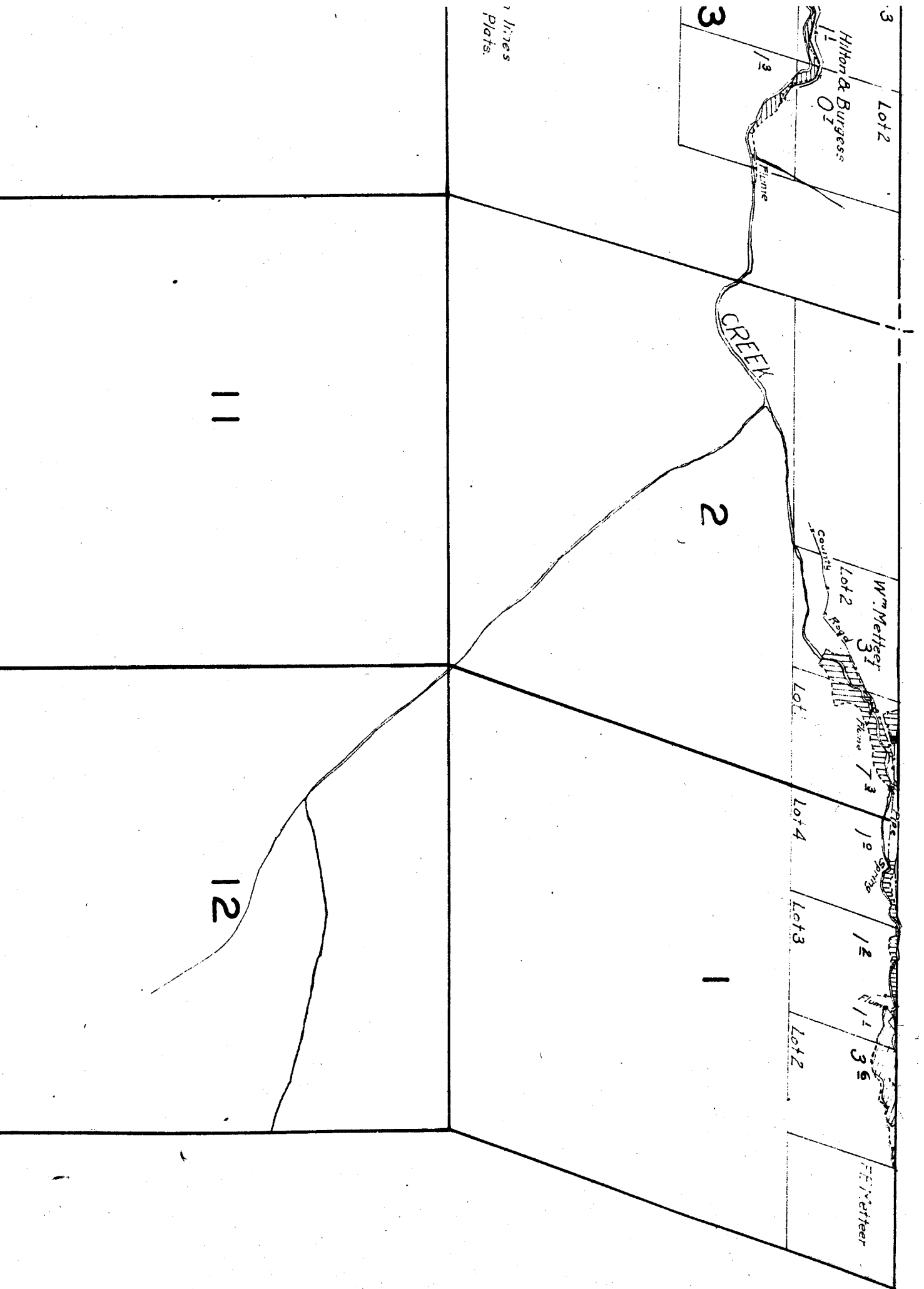
NOTE: Streams and river, except in the vicinity of irrigated land sketched in approximate location.

14

13

23

24



18

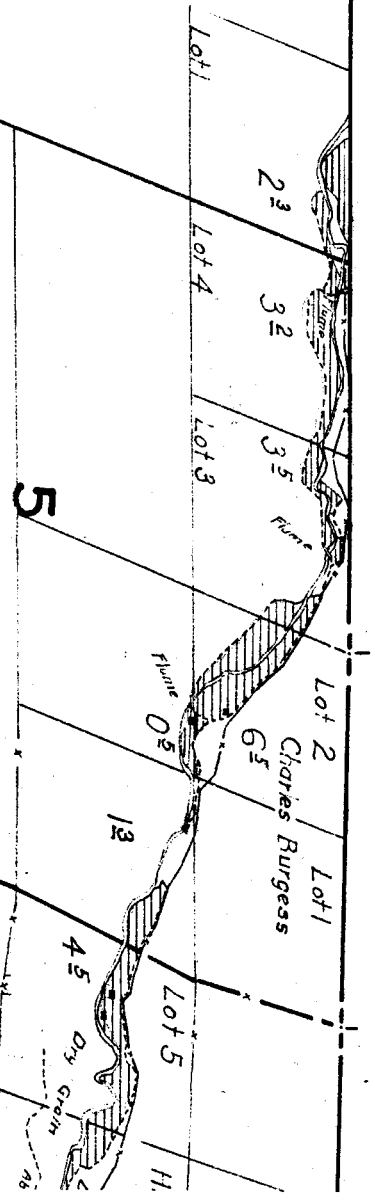
17

16

19

20

21



Surveyed Aug. 12:

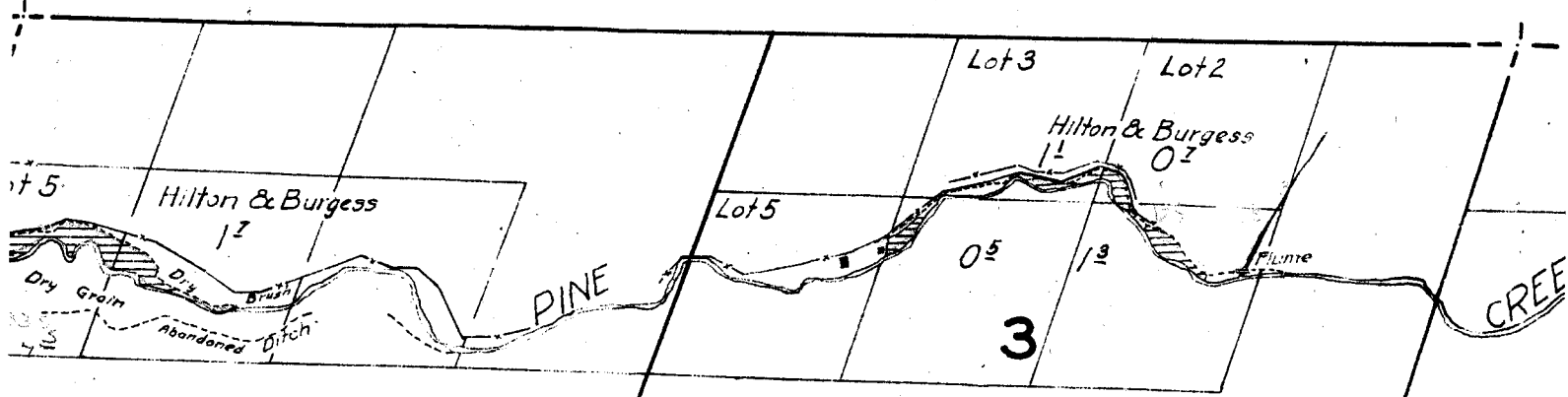
6

7

8

9

TOWNSHIP 8 S., RANGE 20 E.



Aug. 12 to 14, 1926.

Note: Bearings of section lines
taken from U.S. Township Plats.

9

10

NOTE: Stream
the vicinity of
in approximate

16

15

23

24

26

25

35

36

19

20

30

29

31

32

JOHN
DAY
RIVER

