

16

21

17

20

18

19

Ownership - ?

The pumps used to irrigate this land have been moved and their location when in use is unknown.

WILLOW BRANCH

Spring

RIVER

SOREFOOT CREEK

P. Compell 6<sup>0</sup>

JOHN DAY

Sub-irrigated Meadow

P. abney M.W. Nill

Note: An. cont. of land 7<sup>0</sup> 1947  
benefitted by irrigation indefinite.

Surveyed Aug. 17 & 21, 1926.

6<sup>5</sup>

5<sup>5</sup>

4<sup>5</sup>

0<sup>2</sup>

3<sup>2</sup>

3<sup>3</sup>

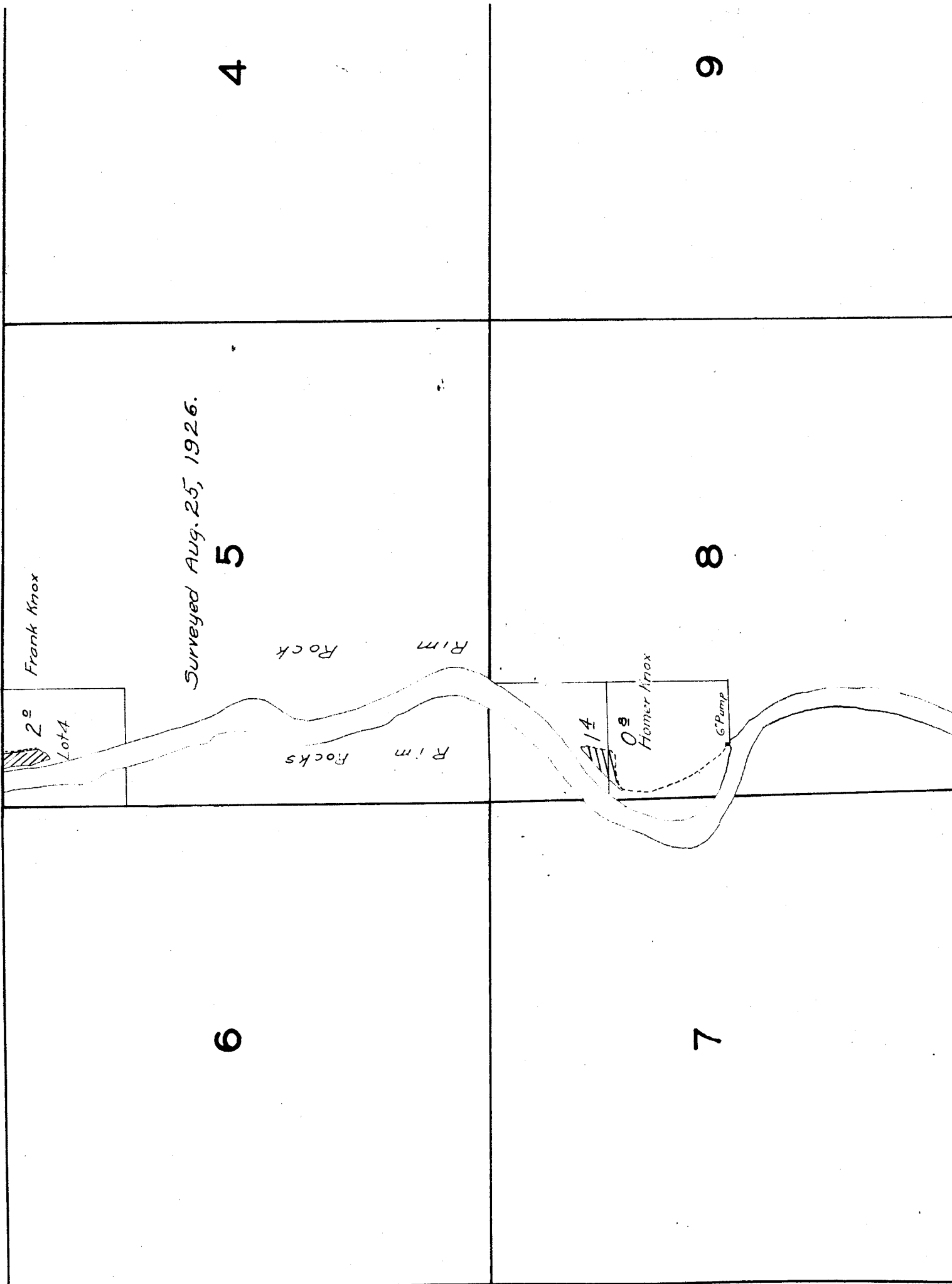
3<sup>3</sup>

3<sup>7</sup>

9<sup>7</sup>

14

# TOWNSHIP



TOWNSHIP 7 S., RANGE 19 E.

4

3

9

10

19

20

M.W. Nill

Note: Amount of land benefited by irrigation indefinite.

Sub-irrigated Meadow

Location of island sketched in field.

Brush & Gravel

30

29

L.V. Tillotson  
M.W. Nill

Sub-irrigated Meadow

Sub-irrigated Meadows

31

32

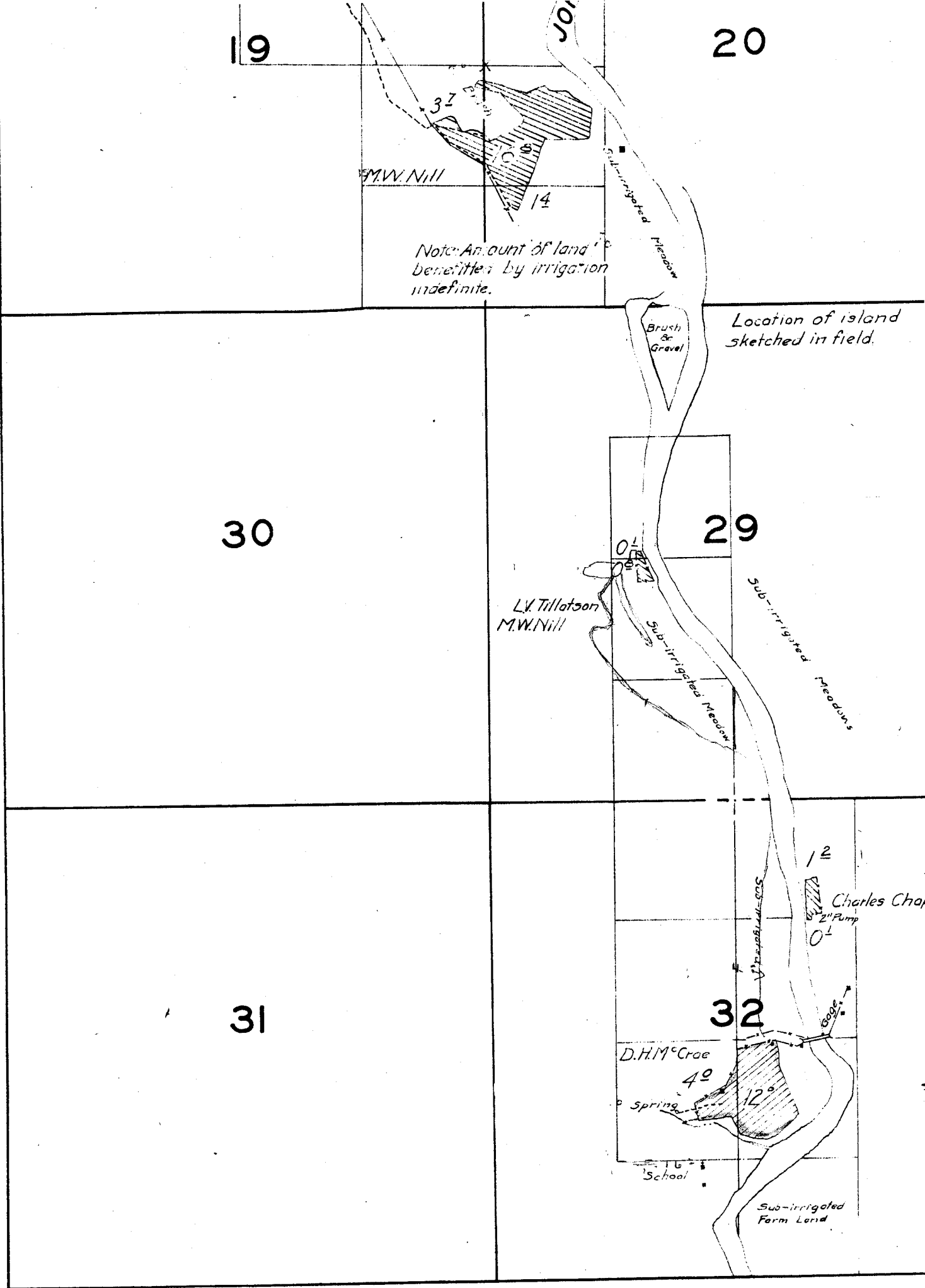
D.H.M. Crae

40  
Spring

School

12  
Charles Chap  
2" Pump

Sub-irrigated  
Farm Land



23

24

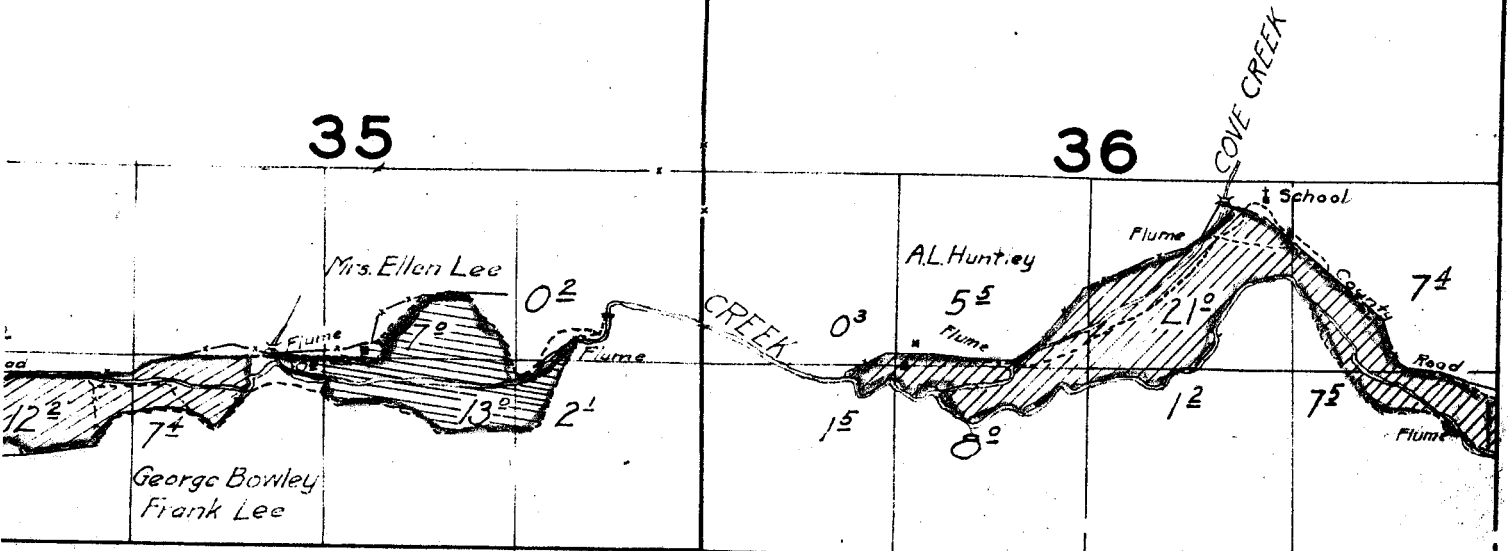
26

25

Surveyed Aug. 14, & 16, 1926.

35

36



on of island  
rd in field.

ted Meadows

28

27

Surveyed

Surveyed Aug. 17, 1926.

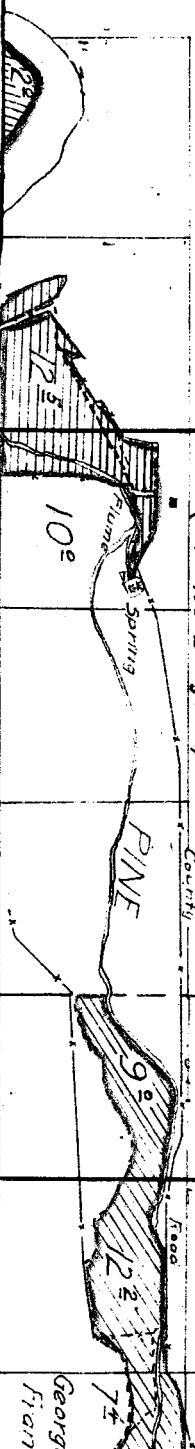
33

34

Charles Chapman



Charles Hiltton  
(Charles Burgess)



16

15

21

22

NOTE: Streams and river, except in the vicinity of irrigated land, sketched in approximate location.

3	2	1
10	11	12



15

14

13

22

23

24

nd river, except in the  
ted land, sketched in  
'ion.

28

27

33

34

*Surveyed Aug. 12 to 14, 1926.*

16

15

21

22

15

14

13

22

23

24

GE 20 E.

31-2-1

3	2	1
10	11	12

18

17

19

20

TOWN

6

5

7

8

TOWNSHIP 7 S. RANGE 20 E.

4

3

9

10

16

15



23

24

26

25

35

36

Wm. Metteer  
02

ONE PINE CREEK  
Flume  
V. County Road

Rim 14  
Rocks

F.E. Metteer  
49

Flume  
PINE

19

20

31

29

31

32

