

18

17

7

8

9

5

TOWNSHIP 6 S., RANGE 21 E.

	3		10
	4		9

15

16

22

21

Thomas Hoover
Spring

CREEK

HOOPER

O.C. Veatch
12

24

20

13E

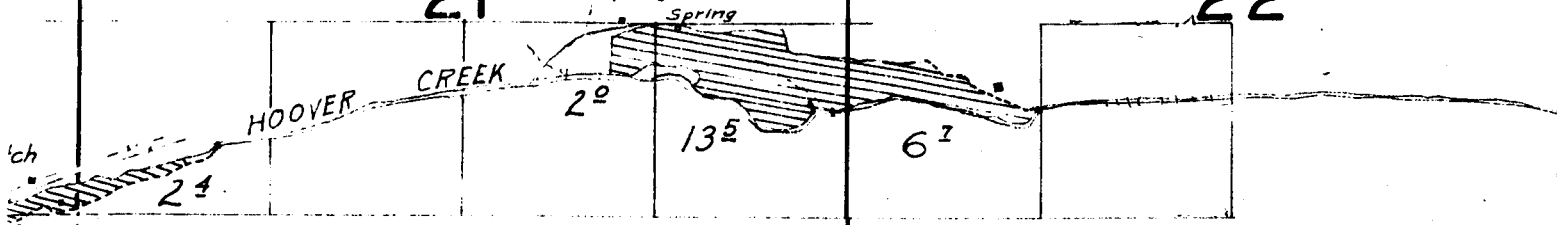
61

NOTE: Streams sketched in approximate location except in the vicinity of irrigated land.

Brush
Spring
Ficks
17M

21

22



NOTE: Streams sketched in approximate location except in the vicinity of irrigated land.

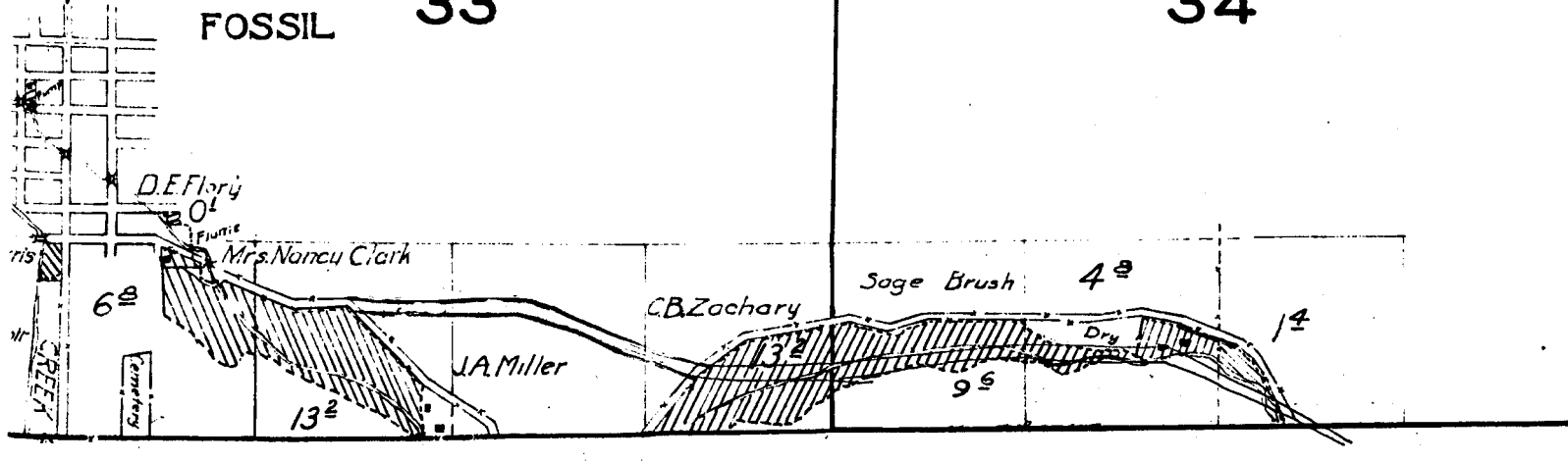
28

27

Surveyed Nov. 12, 14, 20, & 21, 1925.

FOSSIL 33

34



14

13

11

12

2

1

18

17

16

19

20

21

CREEK

HOOVER

OC Yeatch
19

24

Brush

Spring

5052

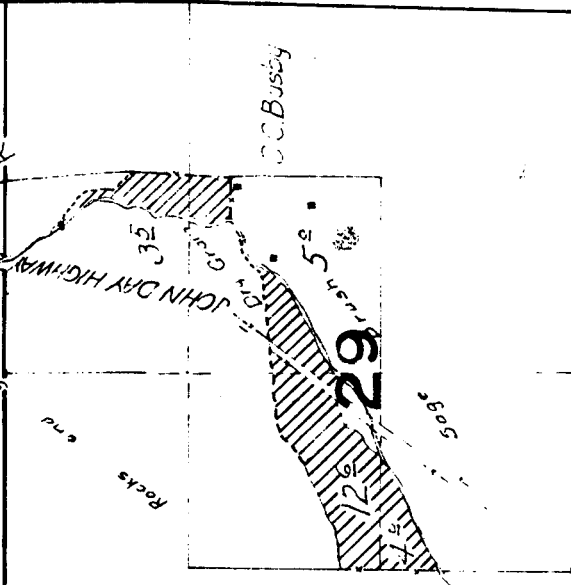
Flm

Rocks

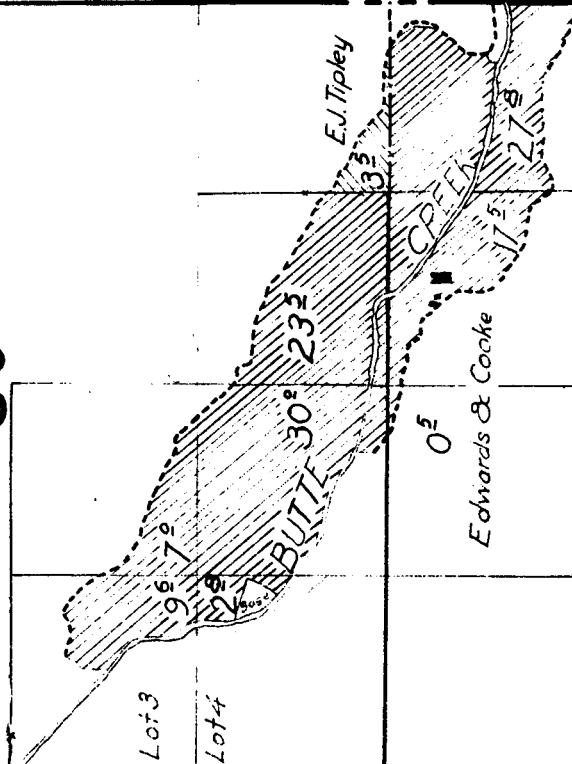
Wash

28

Surveyed Nov. 12, 14, 2

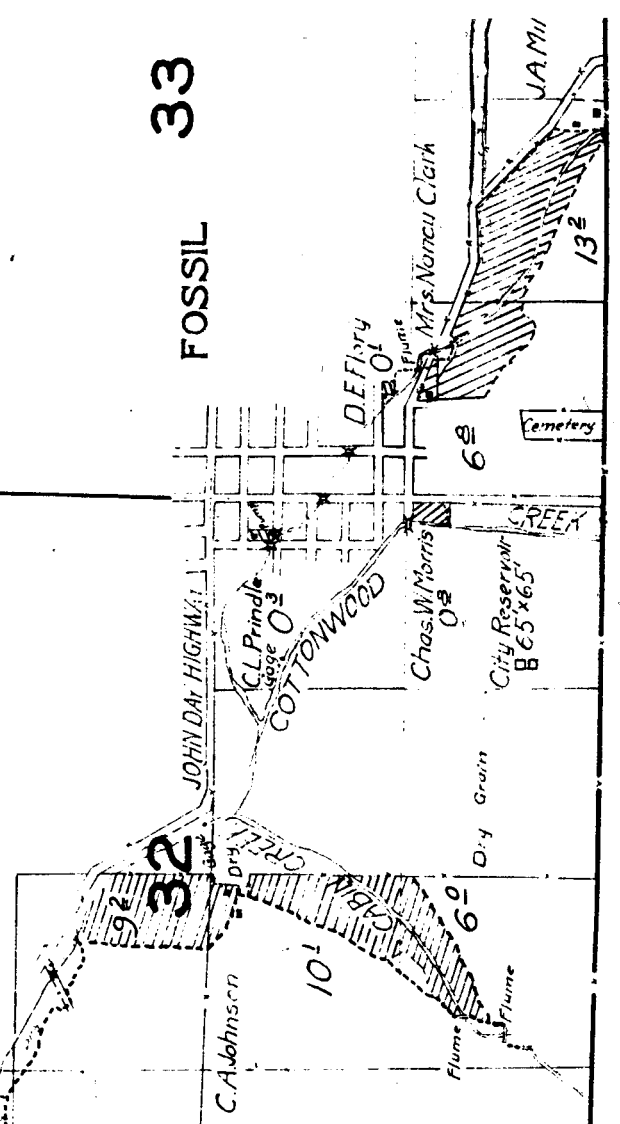


30

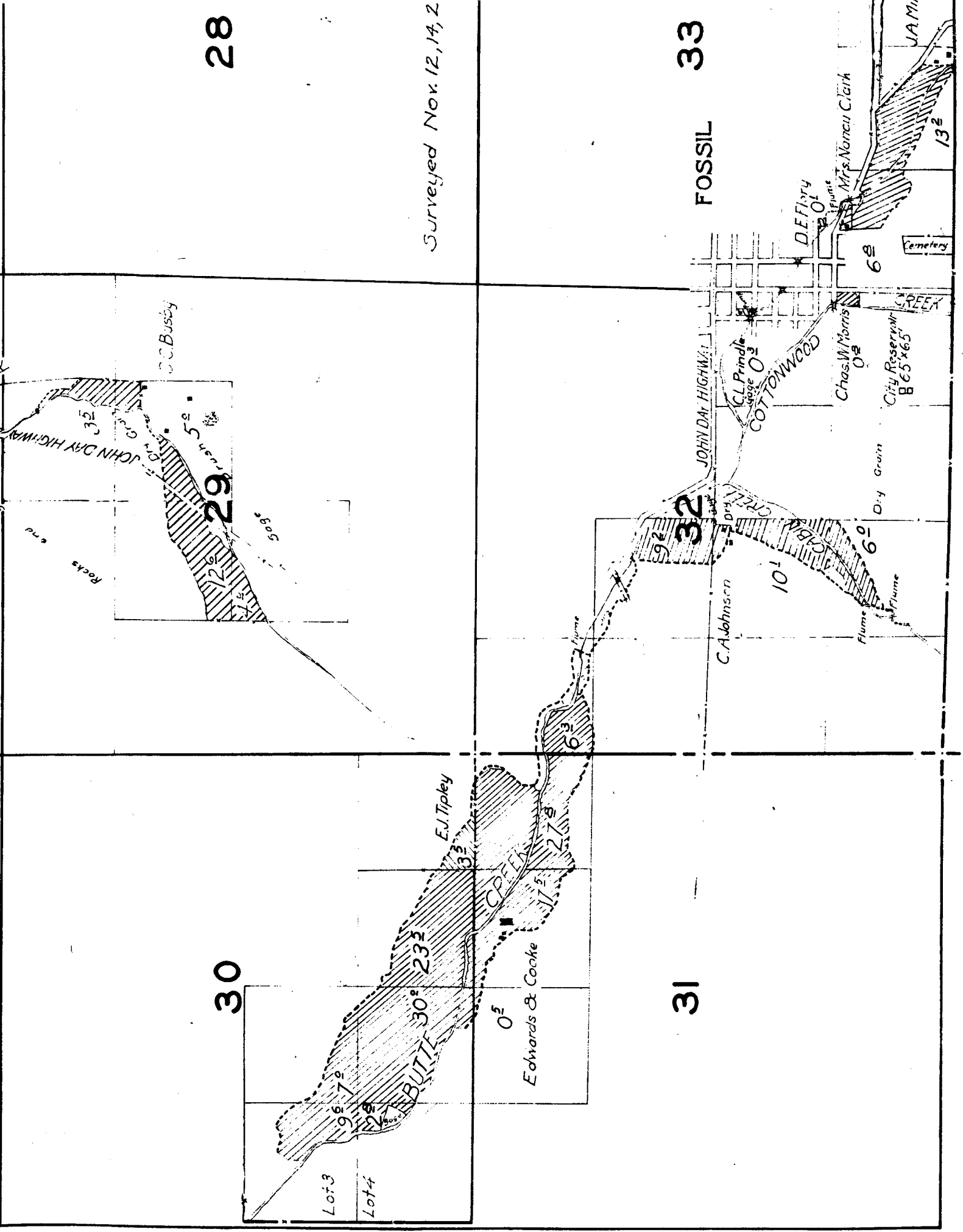


33

FOSSIL



31



15

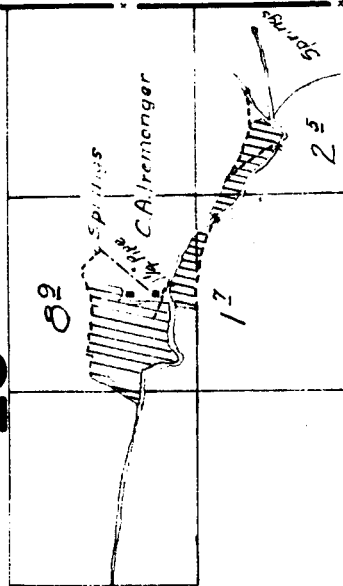
14

13

22

23

24



sketched in approximate
at in the vicinity of

27

26

25

34

35

36

