

15

14

13

22

23

24

nd river, except in the
ted land, sketched in
tion.

3	2	1
10	11	12

on of island
rd in field.

ted Meadows

28

27

1/2
Charles Chapman
2nd Ramp
01

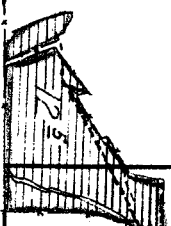
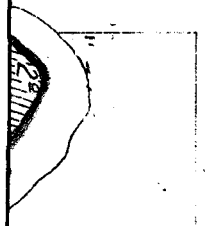
Surveyed Aug. 17, 1926.

33

34

Surveyed

igated
and



10°

Charles Hiltson
(Charles Burgess)

Sluice
Spring

PINE

Courth

9°

12°

12°

7°

Georg.
Frain

16

15

21

22

NOTE: Streams and river, except in the vicinity of irrigated land, sketched in approximate location.

23

24

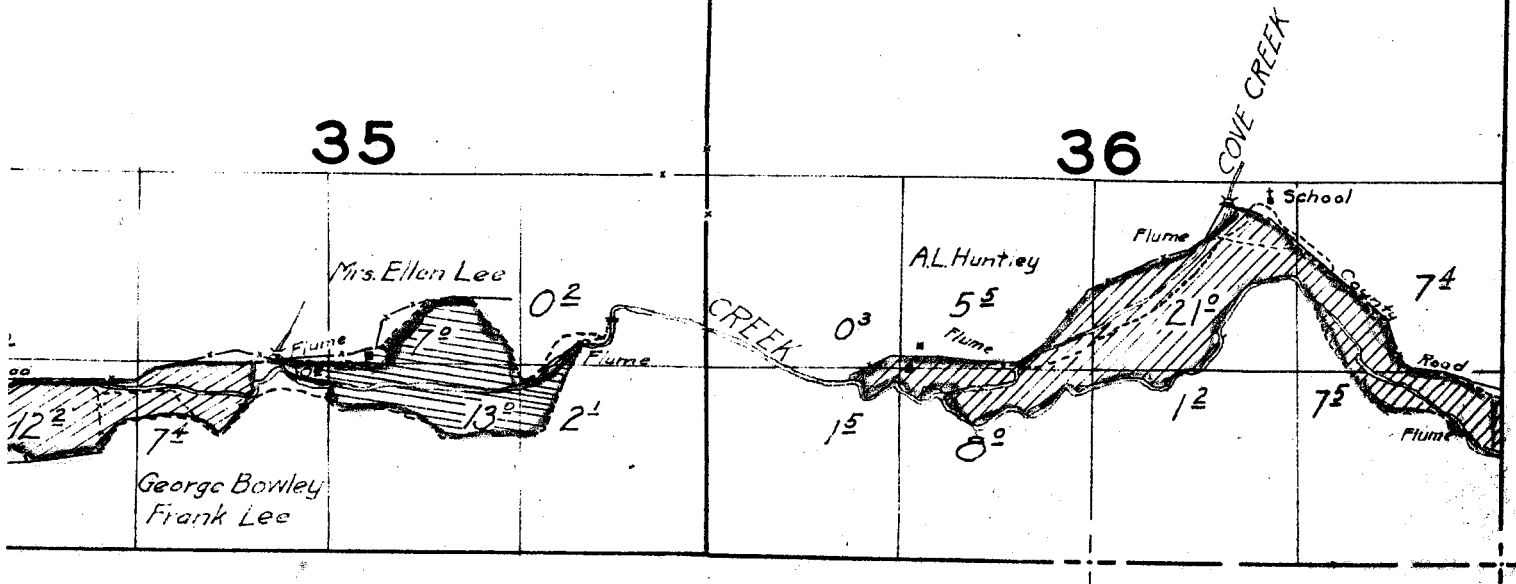
26

25

Surveyed Aug. 14, & 16, 1926.

35

36



19

20

M.W. Nill

Note: Amount of land benefited by irrigation indefinite.

JOI

14

Sub-irrigated Meadow

Brush or Gravel

Location of island sketched in field.

30

29

L.V. Tillatson
M.W. Nill

0 1/2

Sub-irrigated Meadow

Sub-irrigated Meadows

31

32

D.H. McCrae

40

Spring

12

16

School

1 1/2

Charles Chap

2" Pump

0 1/2

Gage

Sub-irrigated Farm Land

TOWNSHIP 7 S., RANGE 19 E.

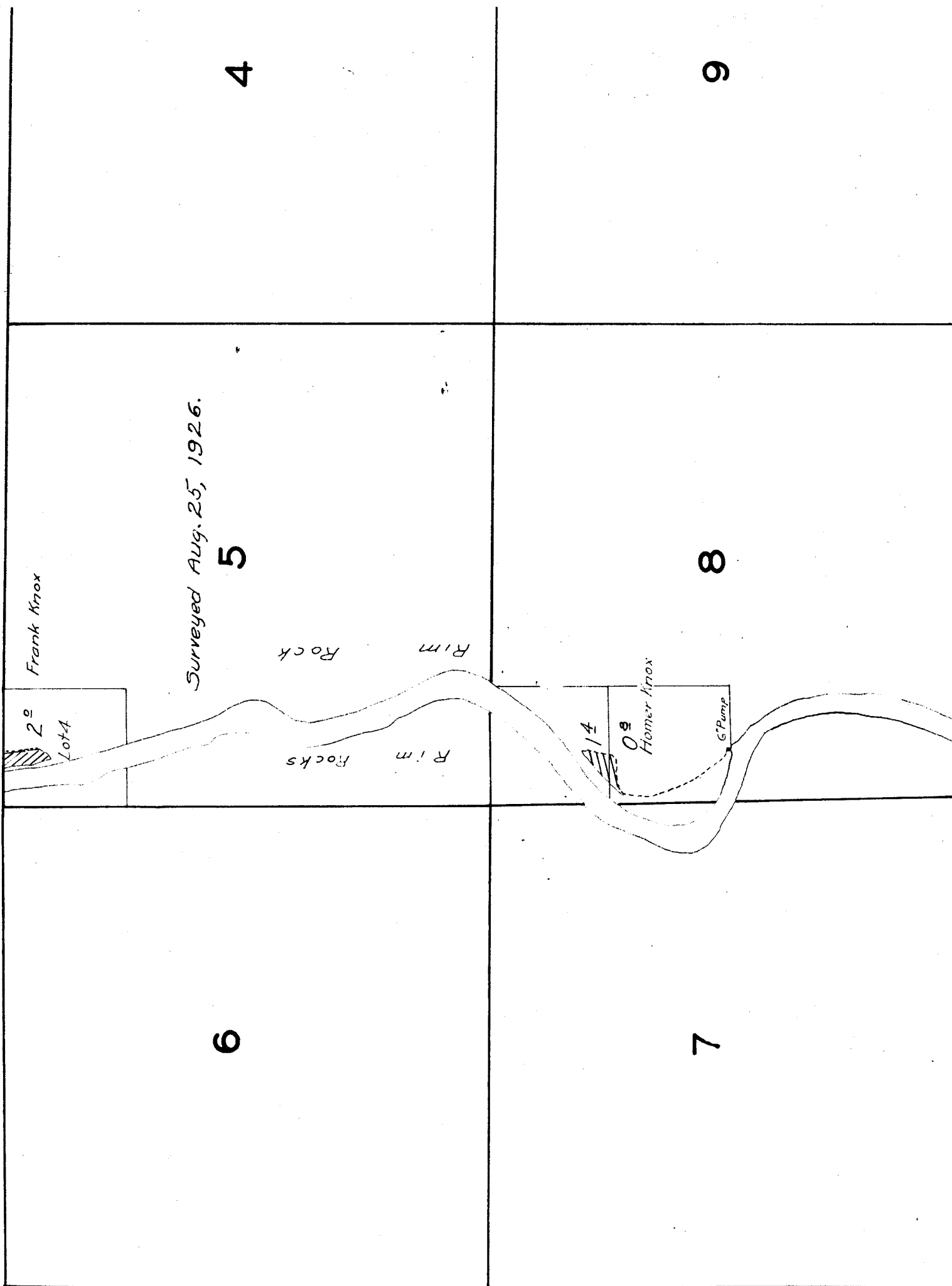
4

3

9

10

TOWNSHIP



16

21

17

20

18

19

Ownership - ?

The pumps used to irrigate this land have been moved and their location when in use is unknown.

WILLOW BRANCH

Spring

32

JOHN DAY RIVER

Sub-irrigated Meadow

14

Note: Amount of land benefited by irrigation indefinite.

P. 2645 MW N III

R. Campbell 62

SOREFOOT CREEK

Surveyed Aug. 17 & 21, 1926.

62

52

42

2

32

32

9

7

14