

TOWNSHIP 7 S., RANGE 19 E.

4

3

9

10

19

20

M.W. Nill

Note: Amount of land benefitted by irrigation indefinite.

Brush & Gravel

Location of island sketched in field.

30

29

L.V. Tillatson
M.W. Nill

Sub-irrigated Meadows

31

32

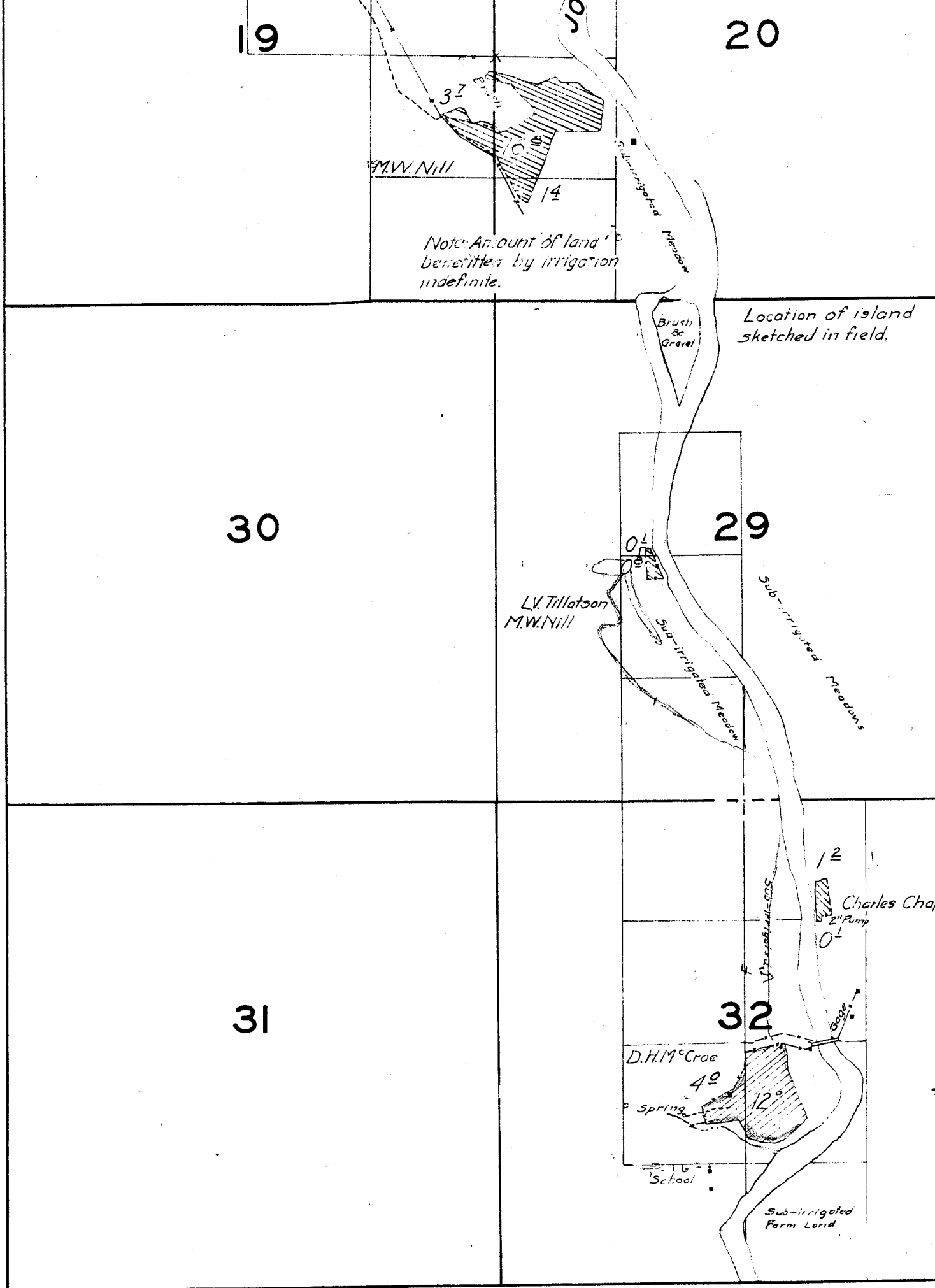
D.H.M. Crae

Charles Chap

Spring

School

Sub-irrigated Farm Land



23

24

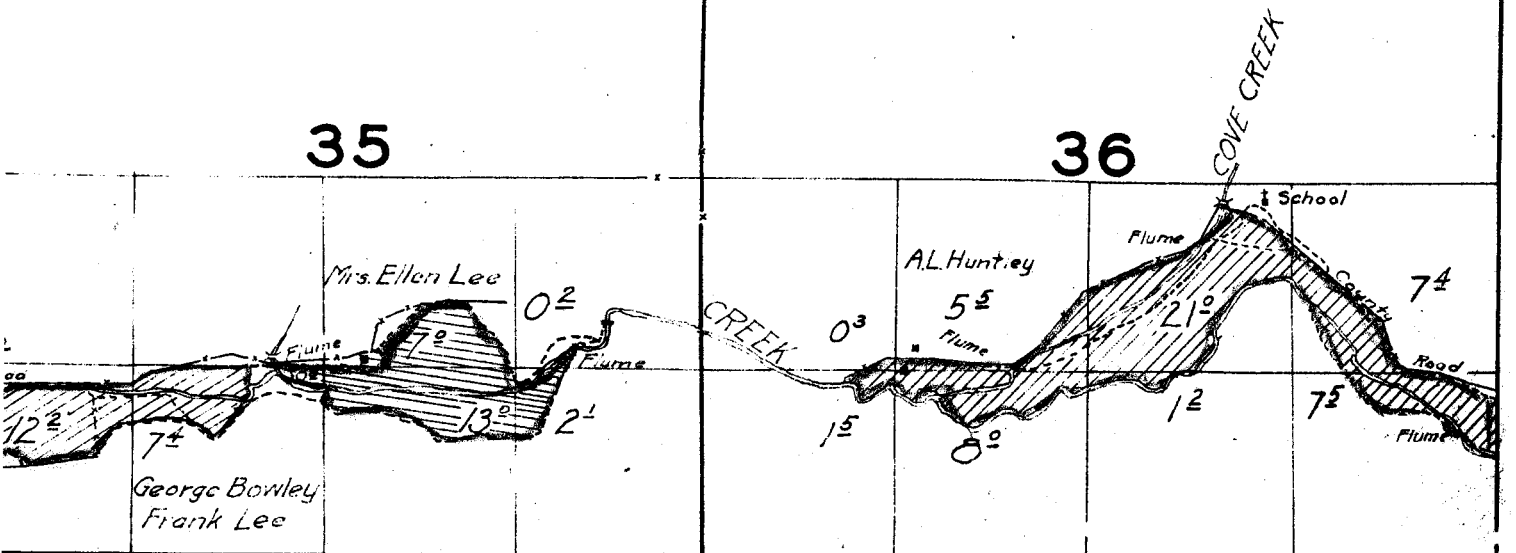
26

25

Surveyed Aug. 14, & 16, 1926.

35

36



15

16

22

21

NOTE: Streams and river, except in the vicinity of irrigated land, sketched in approximate location.

an of island

on of island
rd in field.

28

27

ated Meadows

1/2

Charles Chapman

2 1/2 Pump

Surveyed Aug. 17, 1926.

33

Surveyed

34

Charles Hilton
(Charles Burgess)

Flume
Spring

RINE

1000

County

7 1/2

9 1/2

10 1/2

7 1/2

Georg.
Flan.

igated
and

3

2

1

10

11

12

15

14

13

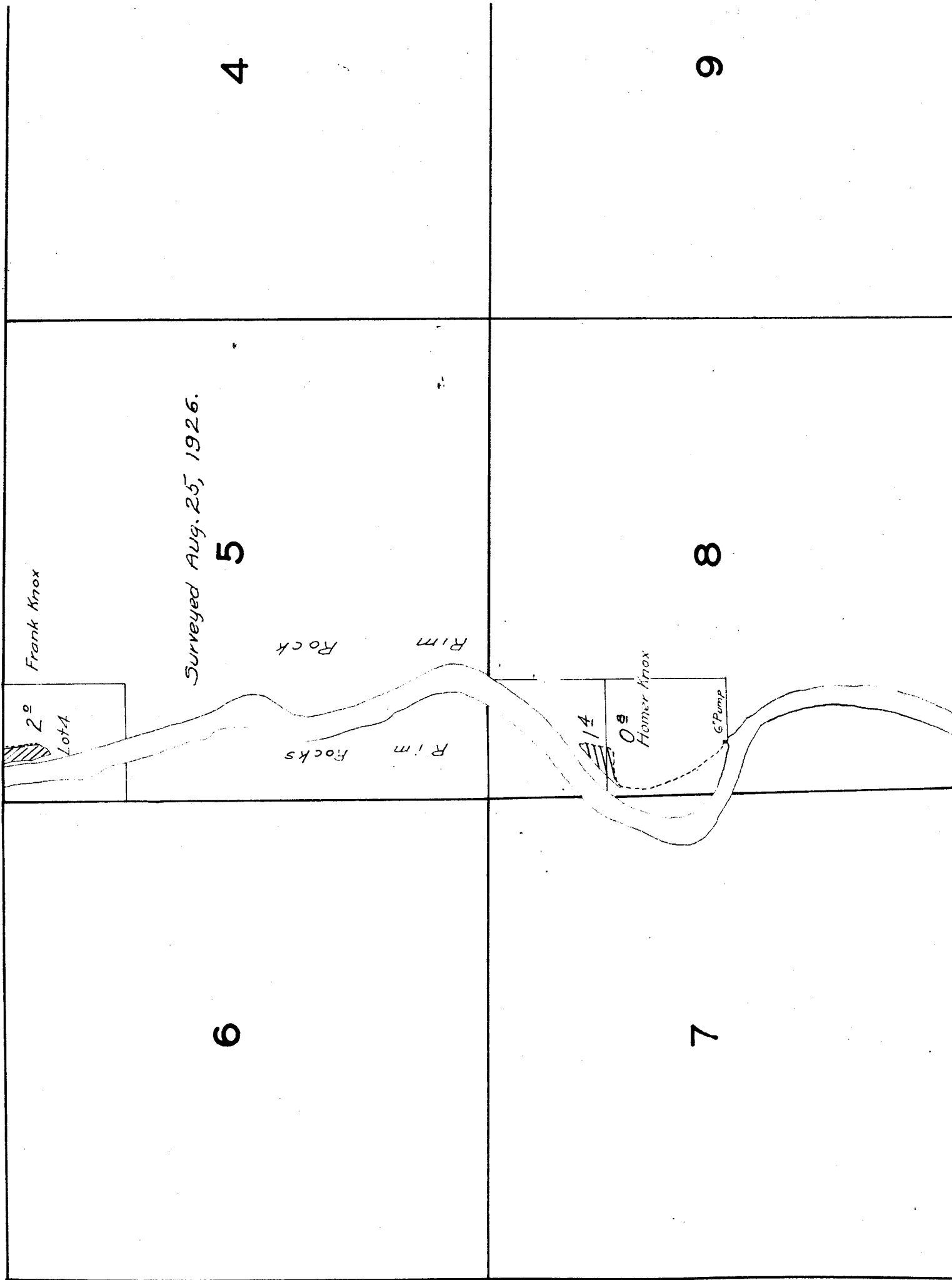
22

23

24

nd river, except in the
ted land, sketched in
tion.

TOWNSHIP



16

21

17

20

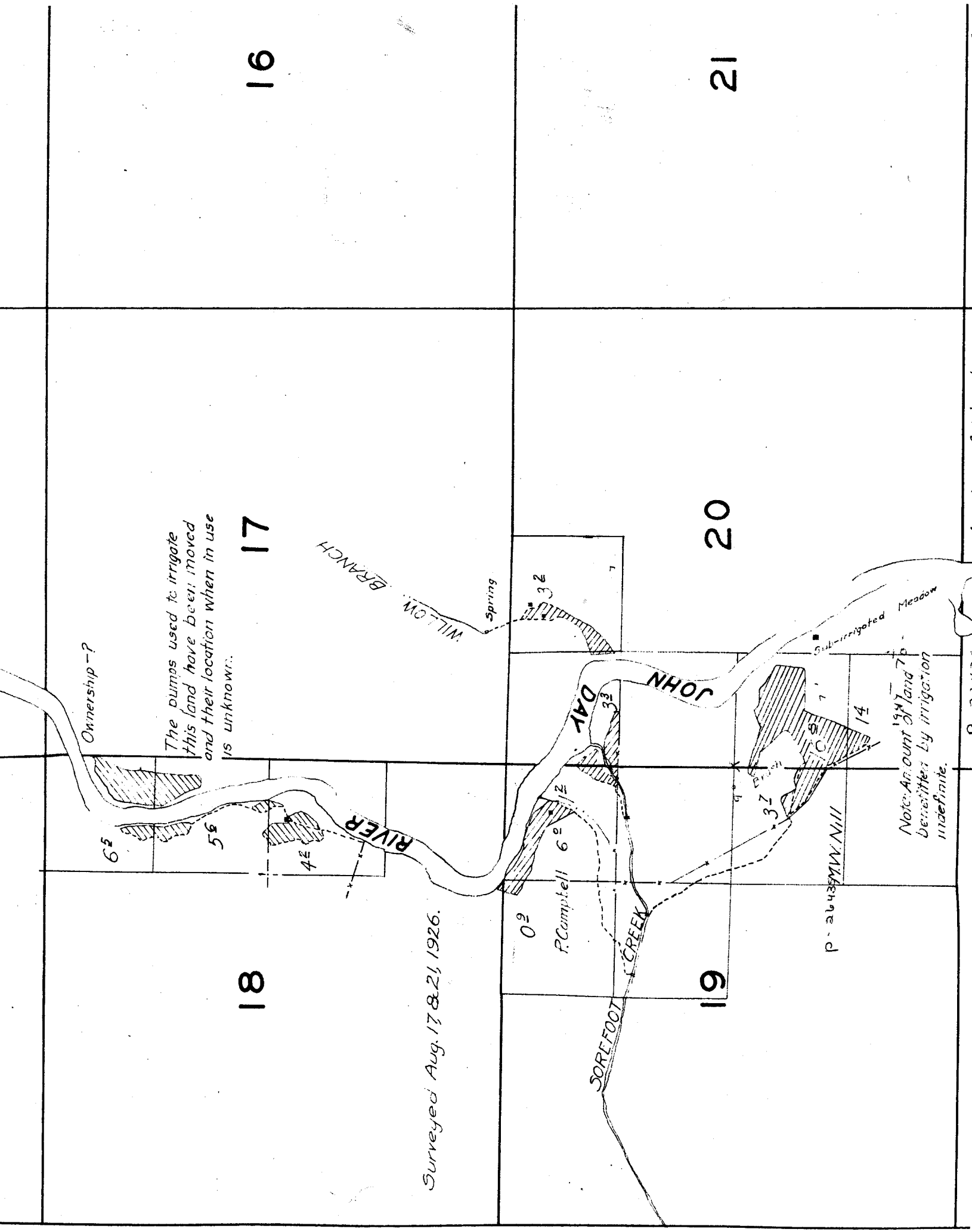
18

19

Ownership - ?

The pumps used to irrigate this land have been moved and their location when in use is unknown.

Surveyed Aug. 17 & 21, 1926.



Note: Amount of land to be benefited by irrigation indefinite.

P. 2643 M.V. Mill

R. Campbell 62

02

SOREFOOT CREEK

JOHN DAY

JOHN DAY

WILLOW BRANCH

Spring

Sub-irrigated Meadow

65

56

4E

62

33

32

3Z

3Z

14

14