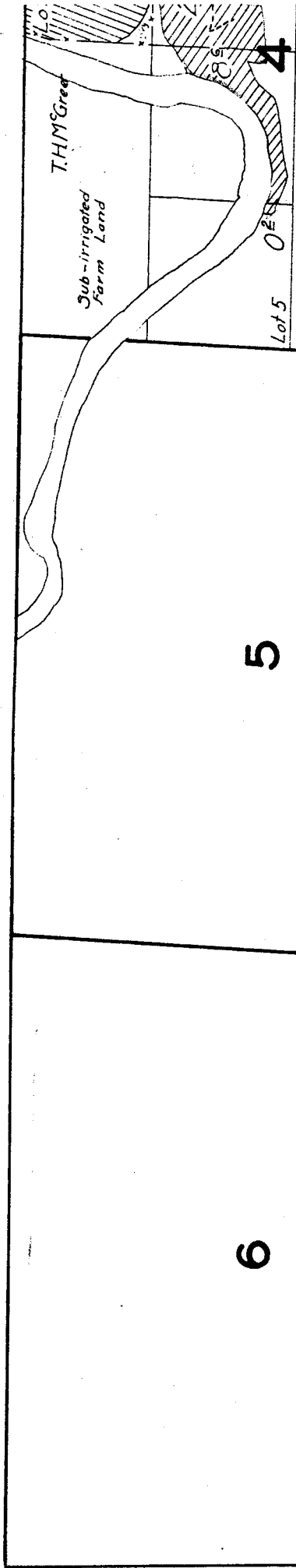


# TOWNS



5

8

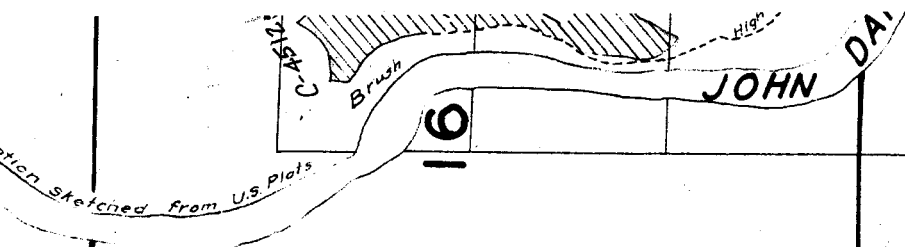
6

7

9

Location of island skeletal in field

Location



16

21

17

20

18

19

29

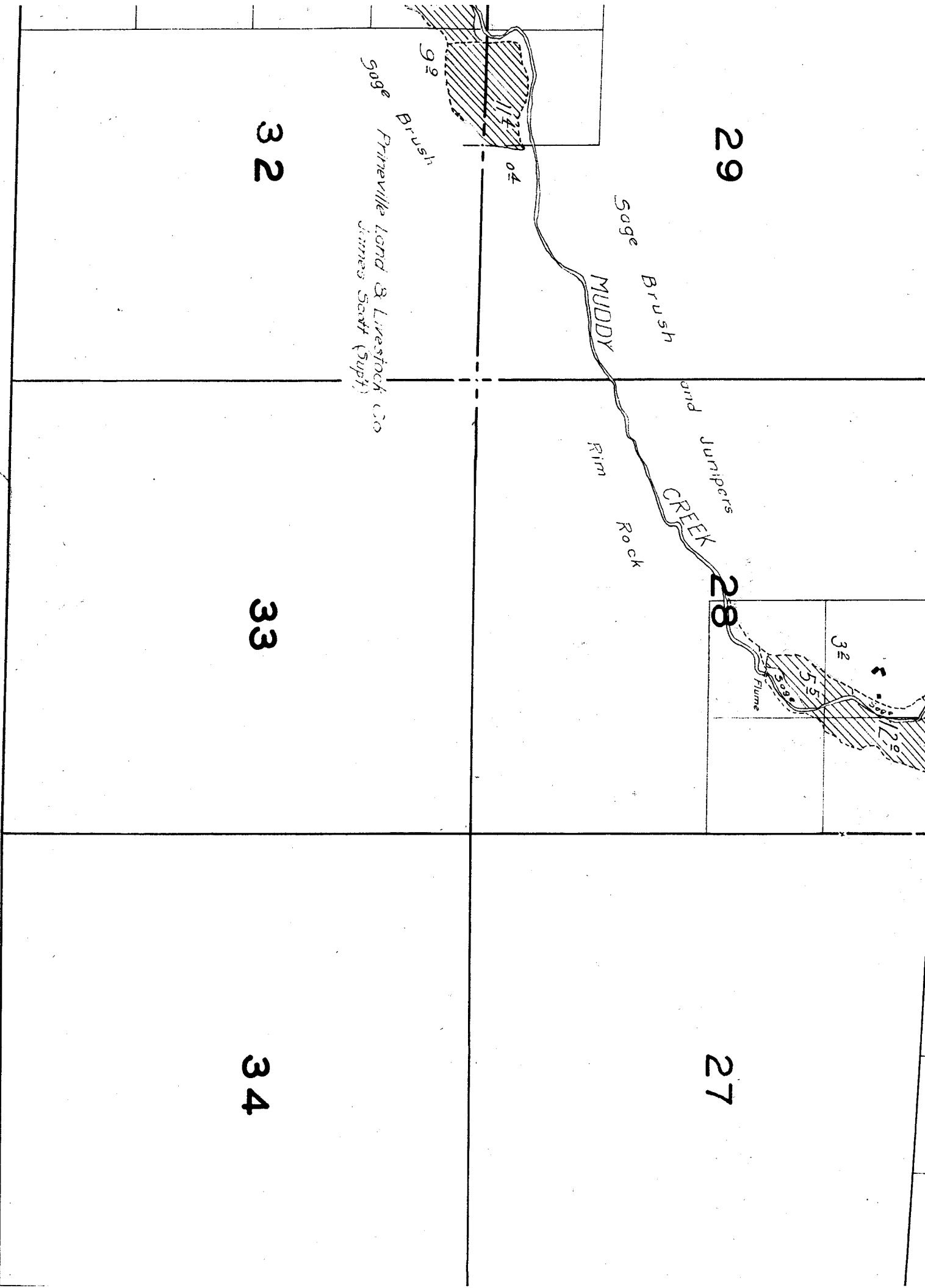
28

27

32

33

34



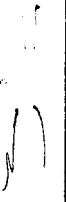
508 Primeville Land & Livestock Co  
James Scott (Supt)

Brush

Sage Brush  
MUDDY

and Junipers  
Rock Rim  
CREEK

Flume



17

16

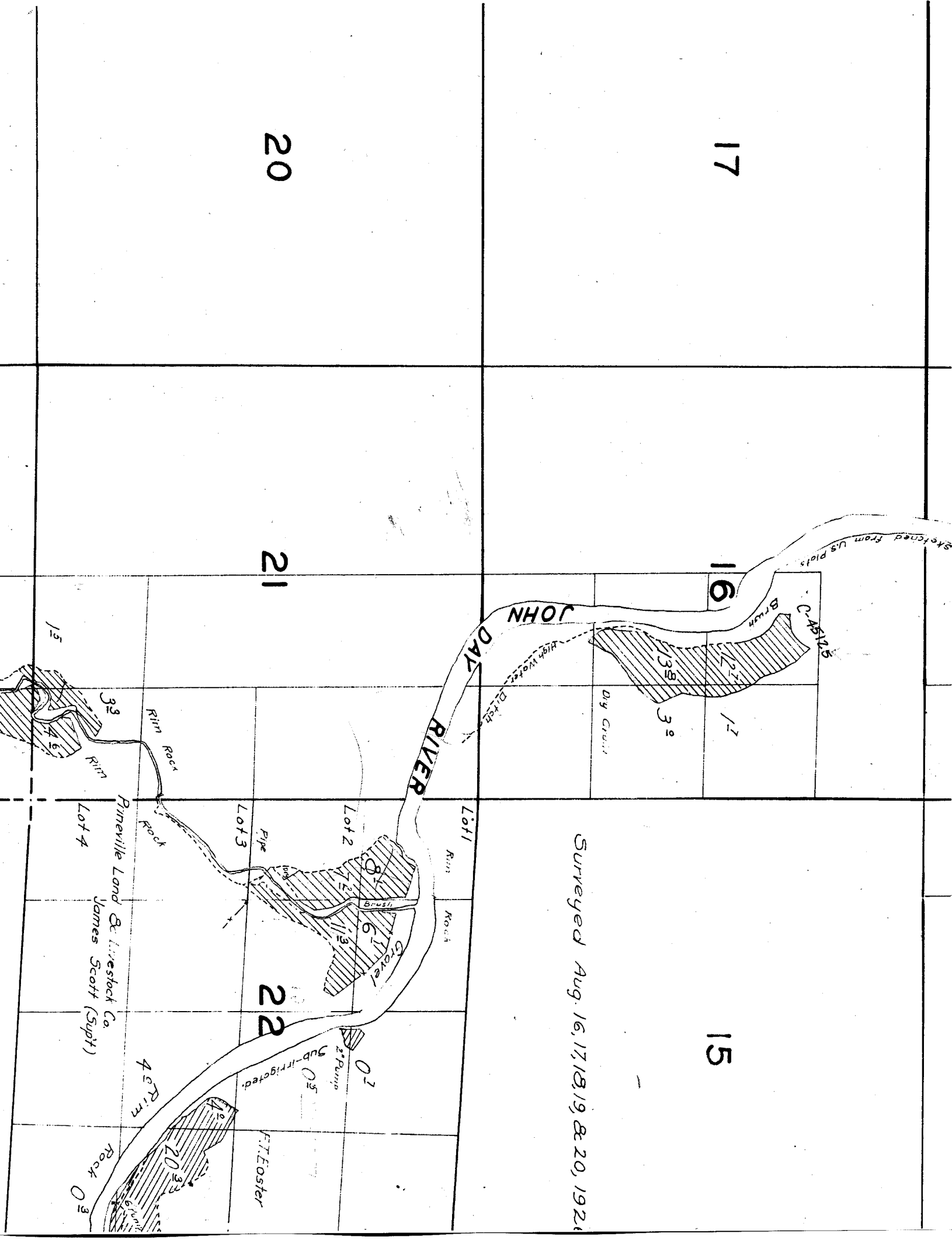
15

20

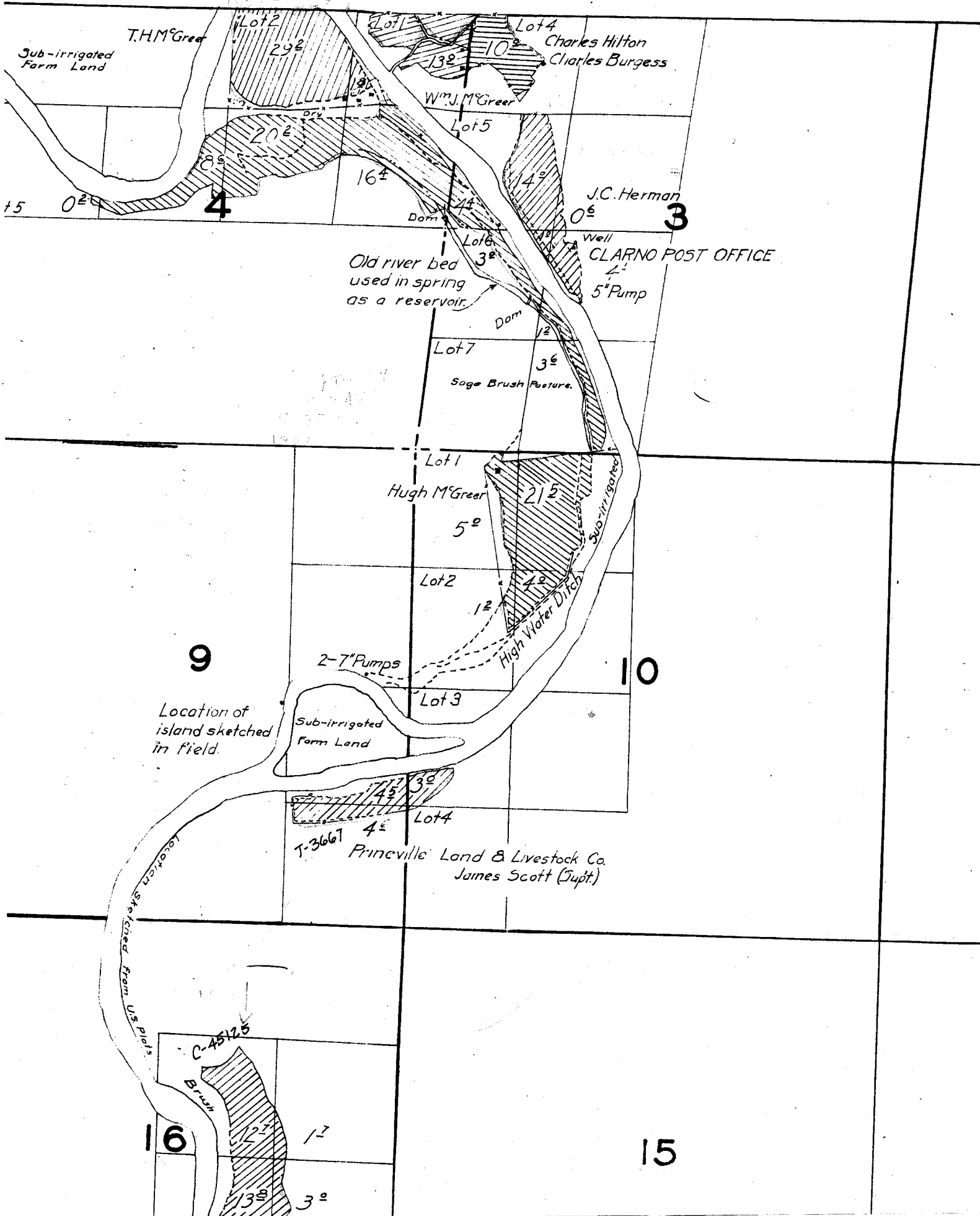
21

22

Surveyed Aug. 16, 17, 18, 19, & 20, 1921



# TOWNSHIP 8 S., RANGE 19 E.



Sub-irrigated Farm Land

T.H.M. Greer

Lot 2  
29<sup>2</sup>

Lot 1  
13<sup>2</sup>

Lot 4  
10<sup>2</sup>

Charles Hilton  
Charles Burgess

Wm. J. McGreer

Lot 5

20<sup>2</sup>

16<sup>2</sup>

4<sup>2</sup>

J.C. Herman

4

3

Dam

Lot 6

Old river bed  
used in spring  
as a reservoir.

Well

CLARNO POST OFFICE

5" Pump

Dam

Lot 7

Sage Brush Pasture.

Lot 1

Hugh M. Greer

5<sup>2</sup>

21<sup>2</sup>

Lot 2

12<sup>2</sup>

4<sup>2</sup>

High Water Ditch

9

10

2-7" Pumps

Location of  
island sketched  
in field.

Sub-irrigated  
Farm Land

Lot 3

17<sup>2</sup>  
14<sup>2</sup>  
3<sup>2</sup>

Lot 4

T-3667  
Pineville Land & Livestock Co.  
James Scott (Jupt.)

Location sketched from US plats

C-45125

16

15

Brush

12<sup>2</sup>

12<sup>2</sup>

13<sup>2</sup>

3<sup>2</sup>

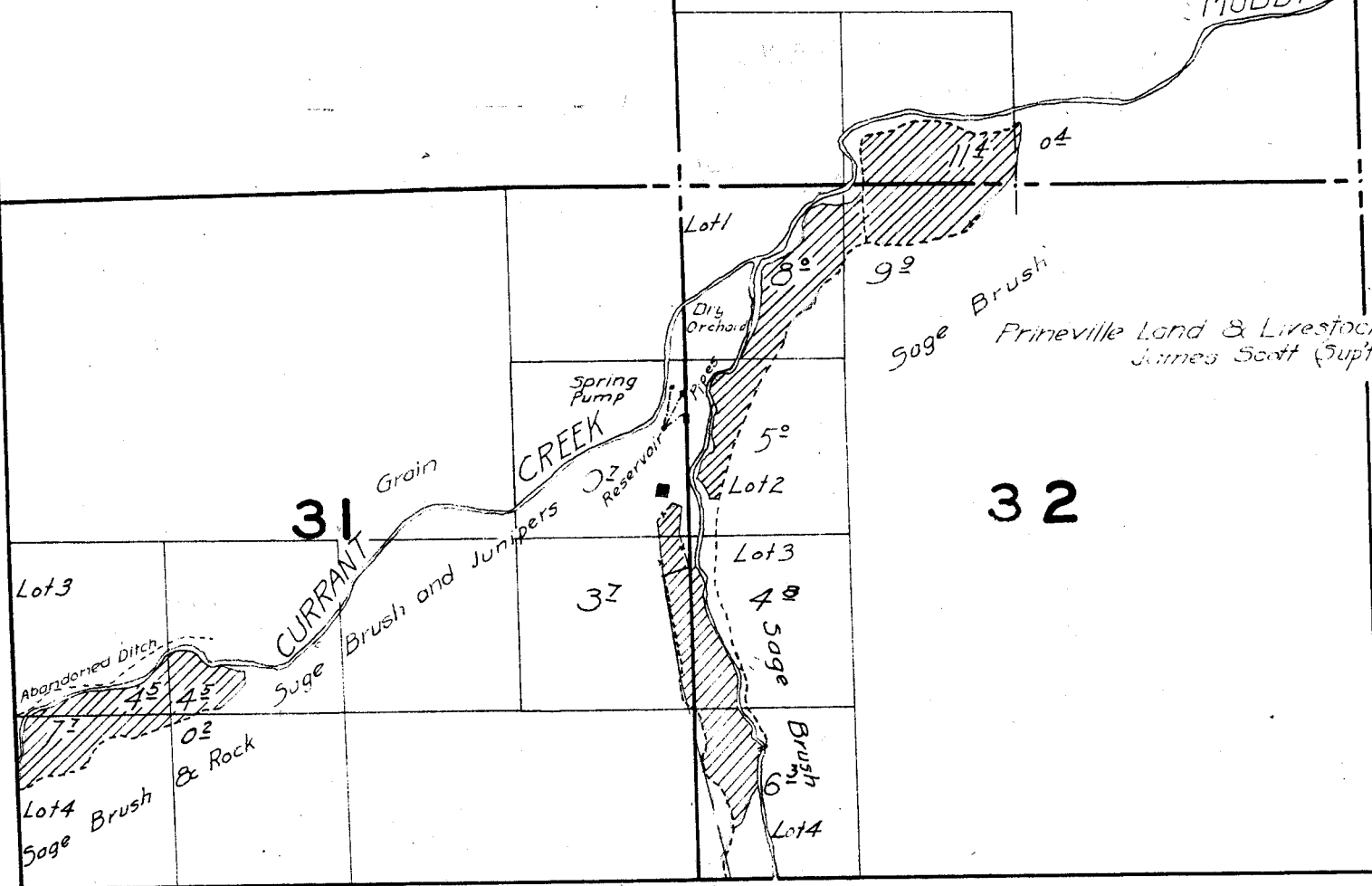
19

20

30

29

Sage Brush  
MUDDY



32

31

37

Lot 3

Lot 1

Lot 2

Lot 3

Lot 4

Lot 5

Lot 6

Lot 7

Lot 8

Lot 9

Lot 10

Lot 4  
Sage Brush

02  
& Rock

CURRENANT CREEK  
Sage Brush and Junipers

CREEK

Spring Pump

Reservoir

Dry Orchard

Sage Brush

Prineville Land & Livestock  
James Scott (Supt.)

Abandoned Ditch

45  
46

02

02

82

92

04

23

24

*Location sketched from U.S. Plats.*

C.S. Hicks  
Sub-irrigated  
Farm Land

26

Rim Rock

4°

sage Brush

25

0°

6' Pump

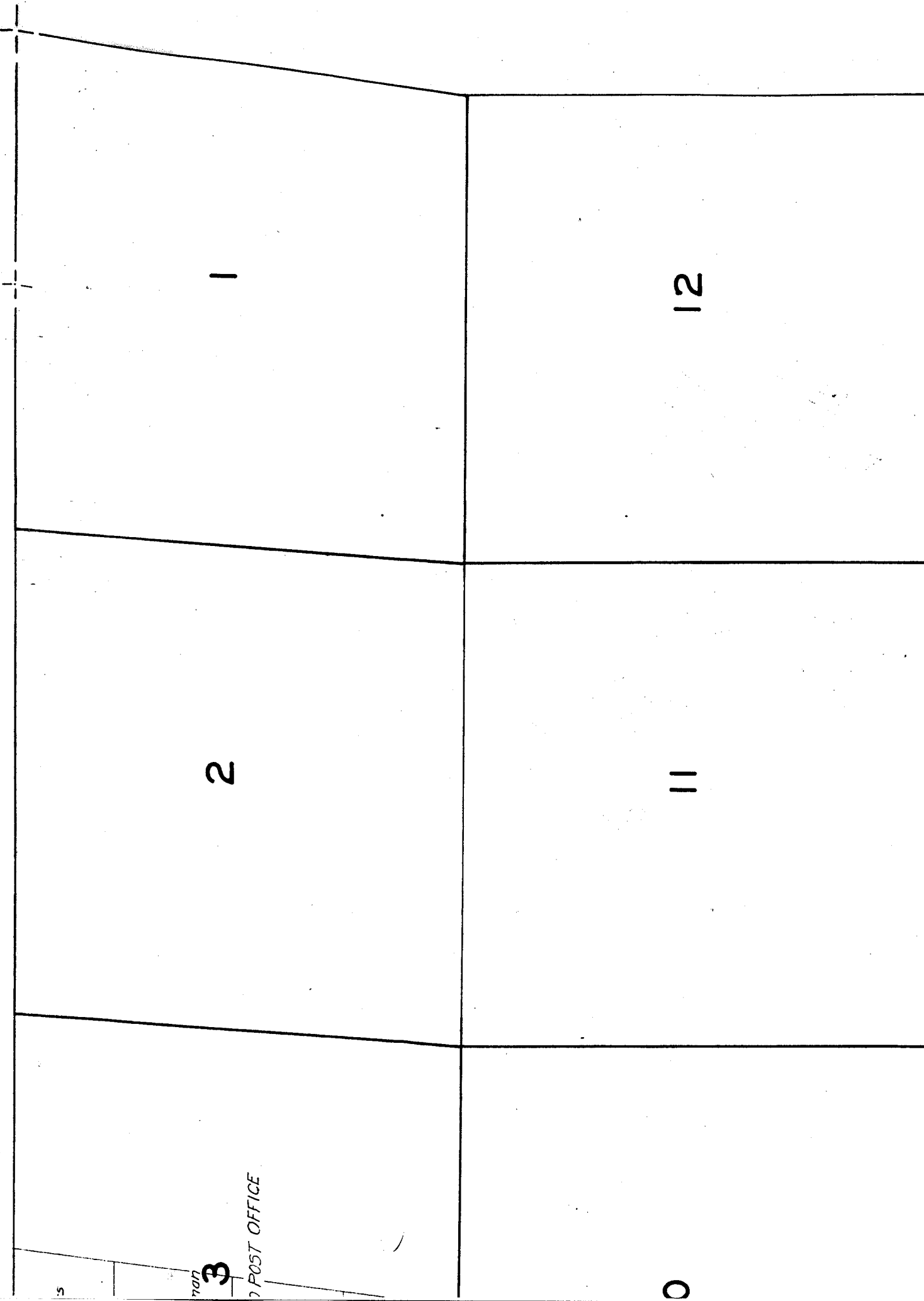
35

36

*Location sketched from U.S. Plats.*

GE 19 E.

42-2-1



5

7000

3

POST OFFICE

0

2

1

11

12



15

14

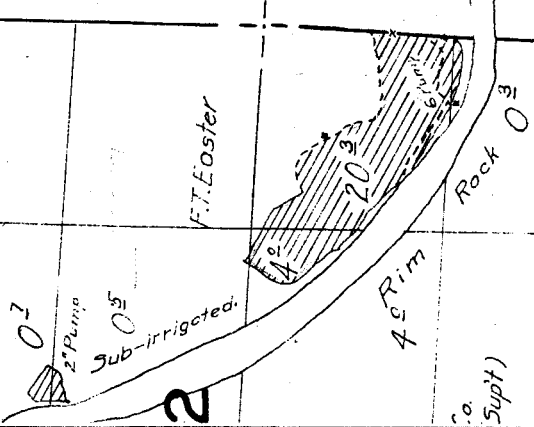
13

'6, 17, 18, 19, & 20, 1926.

2

23

24



C. Supt)