

TOWNSHIP 7 S., RANGE 19 E.

4

3

9

10

19

20

M.W. Nill

14

Note: Amount of land benefited by irrigation indefinite.

Sub-irrigated Meadow

Brush & Gravel

Location of island sketched in field.

30

29

L.V. Tillatson  
M.W. Nill

0 1/2  
0 1/2

Sub-irrigated Meadow

Sub-irrigated Meadows

31

32

D.H.M. Crae

40

Spring

School

Sub-irrigated Farm Land

1 1/2  
2" Pump

Charles Chap

0 1/2

1 1/2

Geop.

Sub-irrigated Meadow

23

24

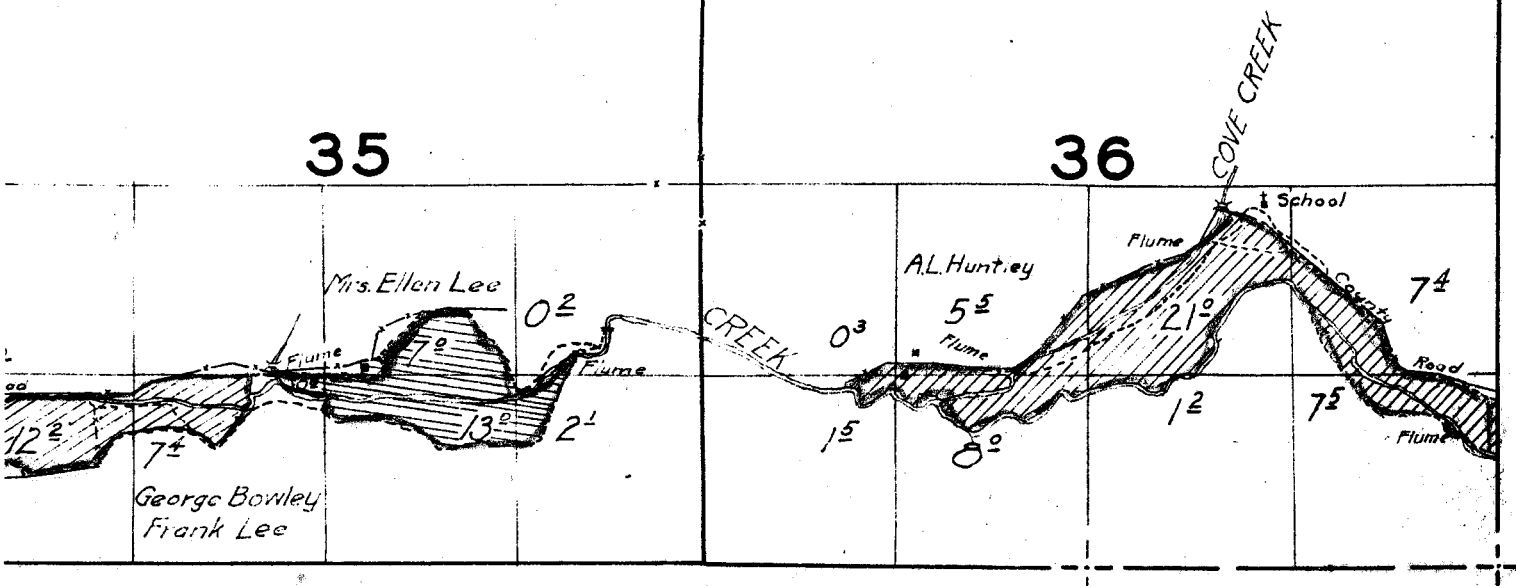
26

25

Surveyed Aug. 14, & 16, 1926.

35

36



15

16

22

21

NOTE: Streams and river, except in the vicinity of irrigated land, sketched in approximate location.

on of island  
nd in field.

28

27

ated Meadows

1/2

Charles Chapman  
2 1/2 Pump

Surveyed Aug. 17, 1926.

33

Surveyed

34

Charles Hilton  
(Charles Burgess)

Spring

PINE

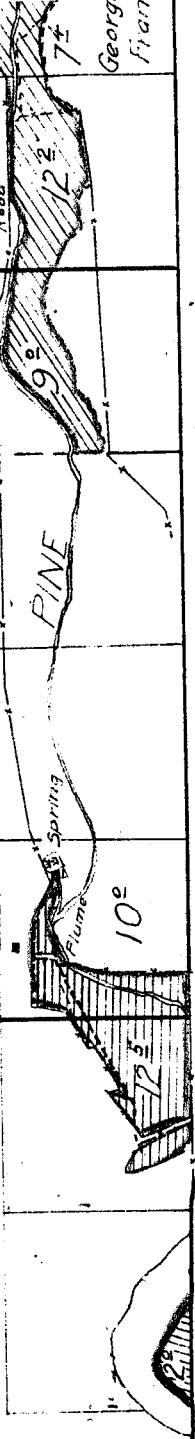
County

10°

7 1/2

Georg.  
Fian.

igated  
and



3	2	1
10	11	12

15

14

13

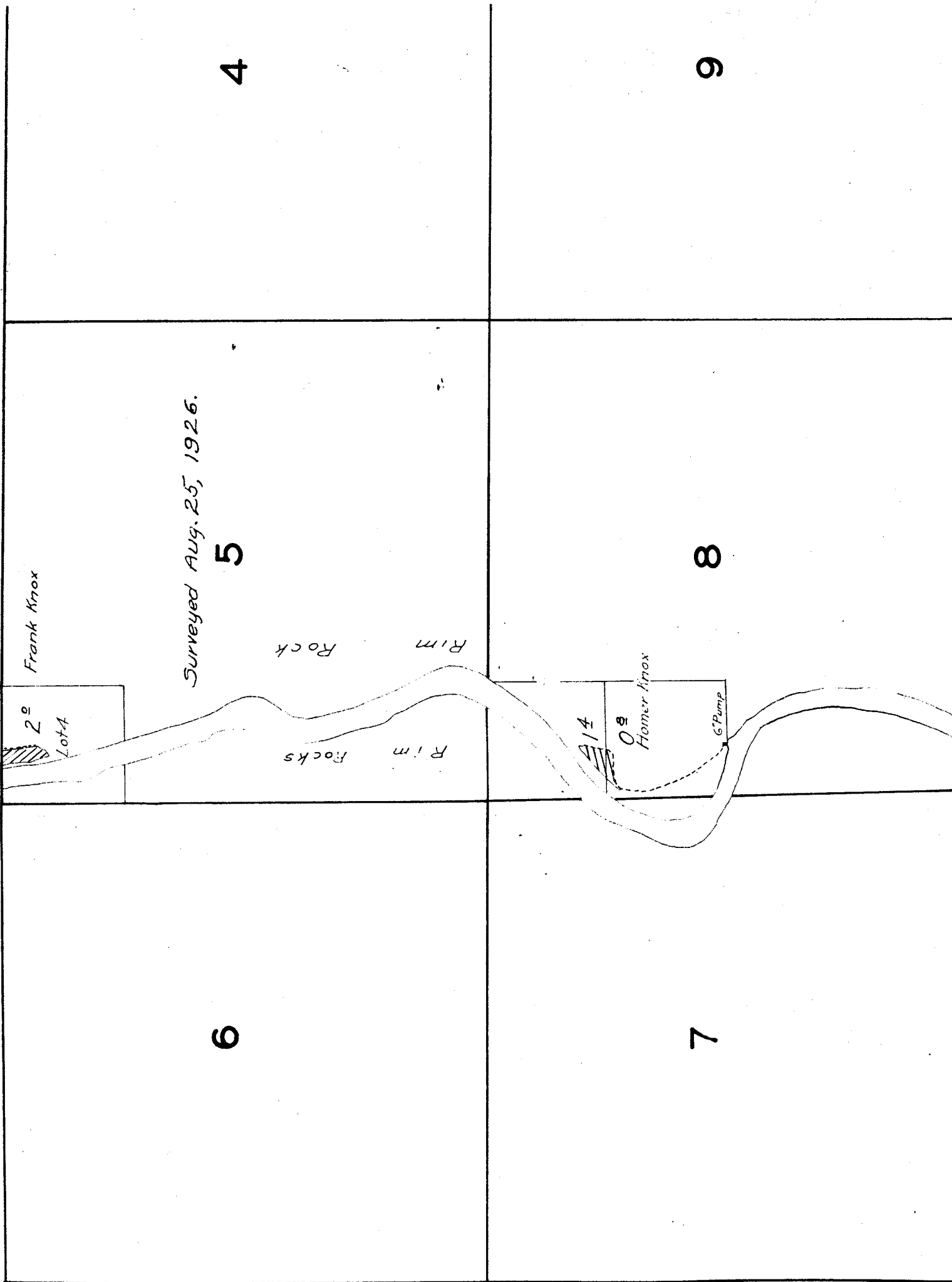
22

23

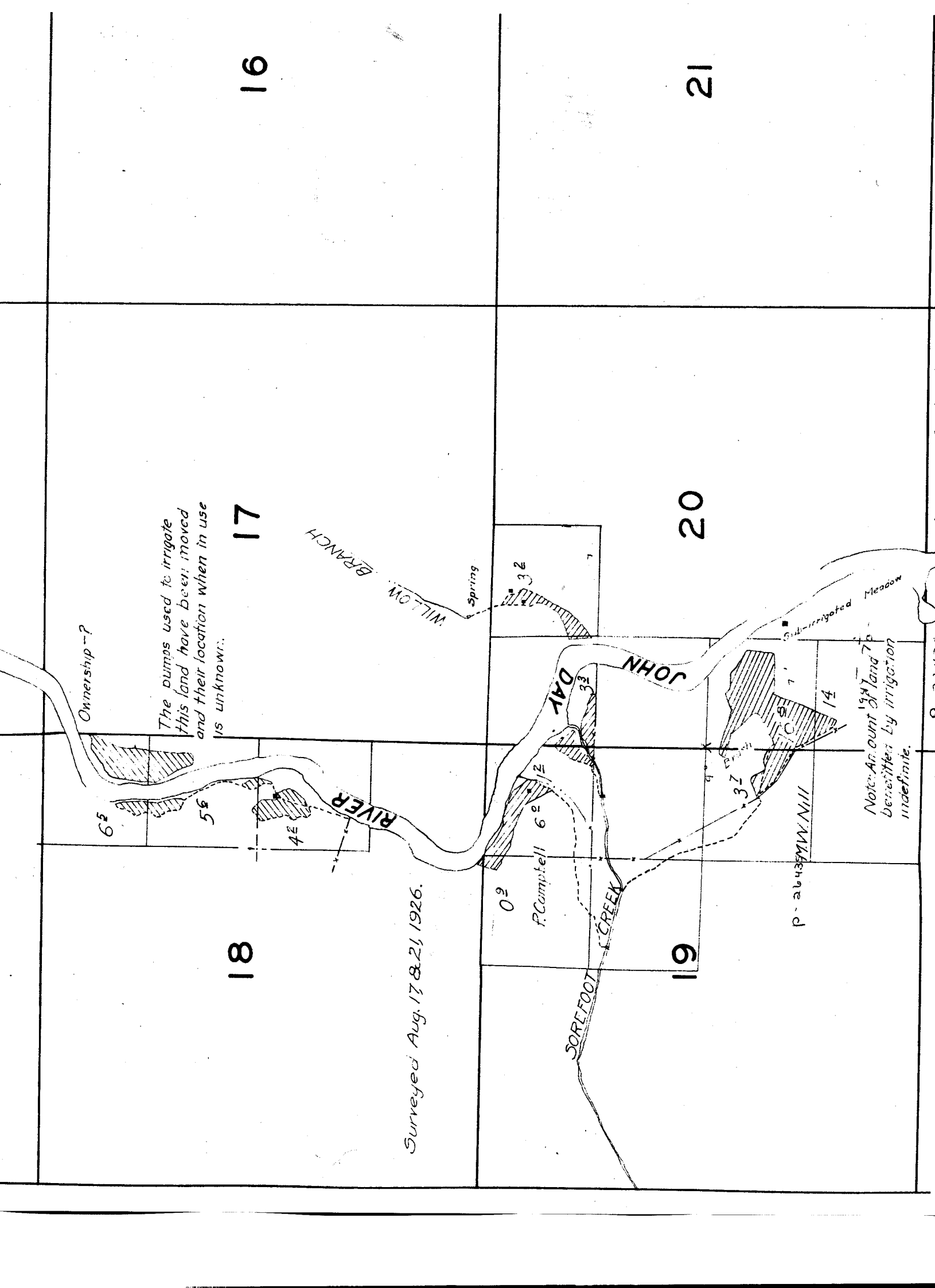
24

nd river, except in the  
ted land, sketched in  
'ion.

TOWNSHIP







16

21

17

20

18

19

Ownership --?

The pumps used to irrigate this land have been moved and their location when in use is unknown.

WILLOW BRANCH

Spring

Sub-irrigated Meadow

RIVER

JOHN

SOREFOOT CREEK

F. Campbell 60

W.W. Nill

Note: Amount of land benefited by irrigation indefinite.

Surveyed Aug. 17 & 21, 1926.

65

56

4E

02

160

32

37

9

14