

18

17

16

19

20

21

*Note:  
Streams and roads, ex  
vicinity of irrigated  
sketched in approxim*

30

29

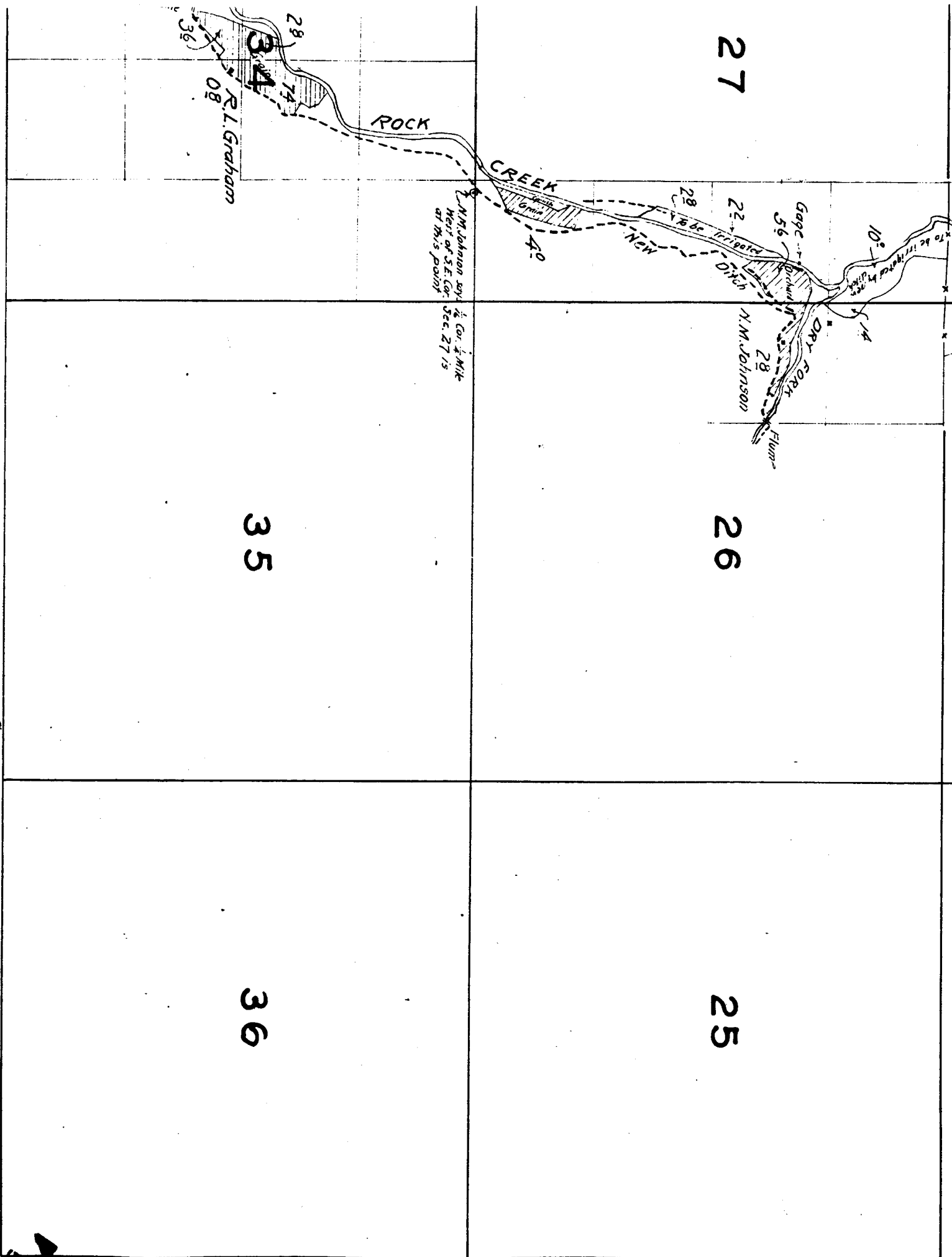
28

*Surveyed May 5 to May*

31

32

33



27

26

25

35

36

ROCK

CREEK

R.L. Graham  
08

N.M. Johnson says  
1/2 Cor. 1/2 Milk  
West of S.E. Cor.  
Sec. 27 is  
at this point

Gauge  
56  
N.M. Johnson

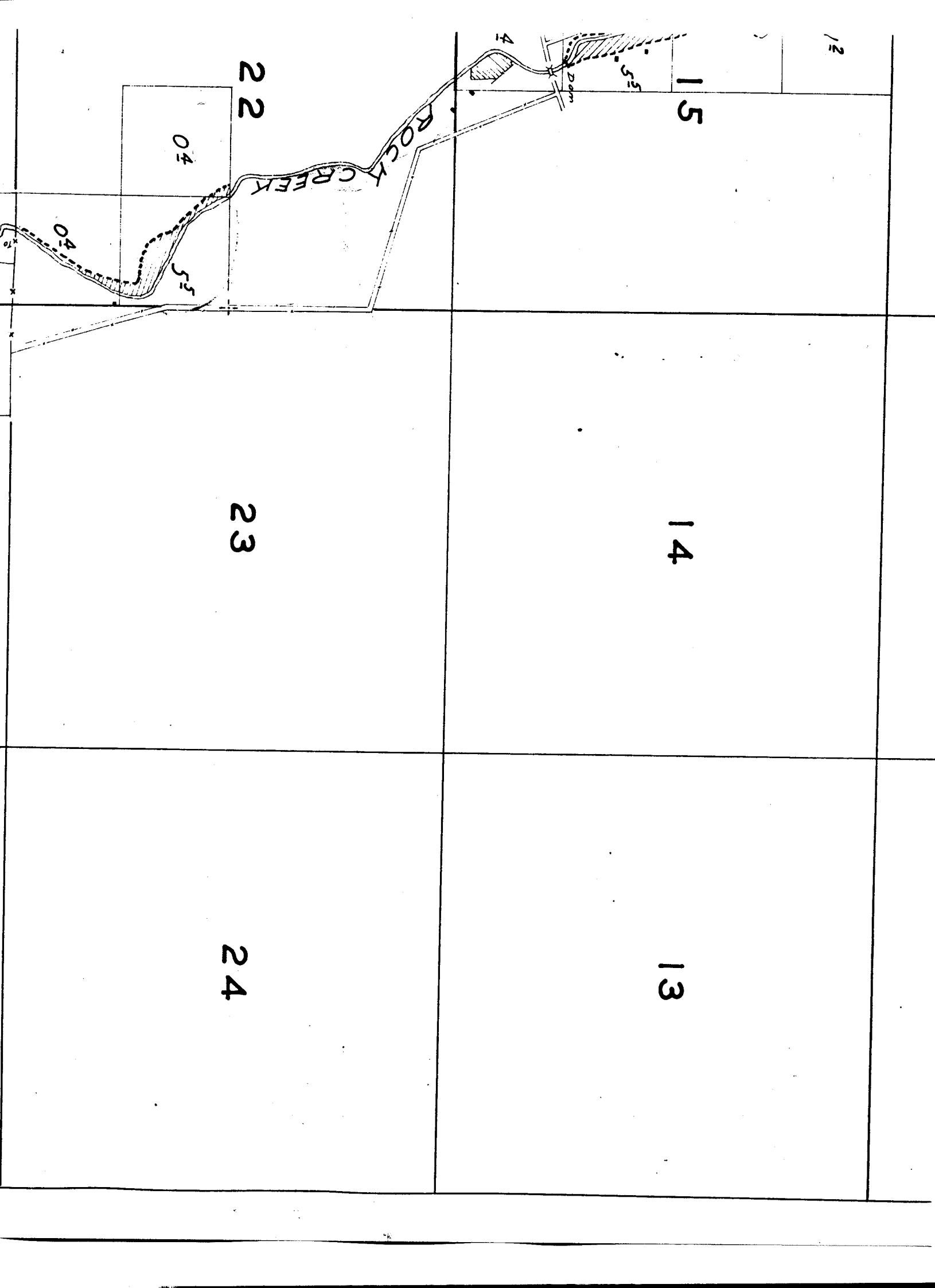
To be irrigated

DRY FORK  
Flum

34  
74

36  
36

To be irrigated by  
ditch



12

15

22

04

23

14

24

13

ROCK CREEK

Dam

4

55

04

21

22

1953 15

04

5

04

10

Gage 56

22

28

40

28

27

Surveyed May 5 to May 9, 1925.

ROCK CREEK

N.M. Johnson & West of S.E. Co. at this point

33

28

74

34

R.L. Graham

08

Grain 18

Flume

36

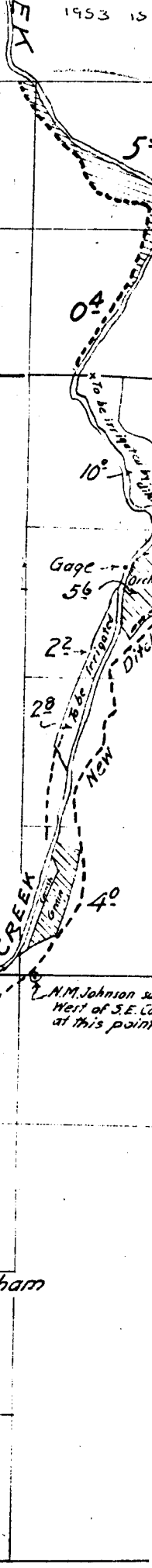
Grain 12

12

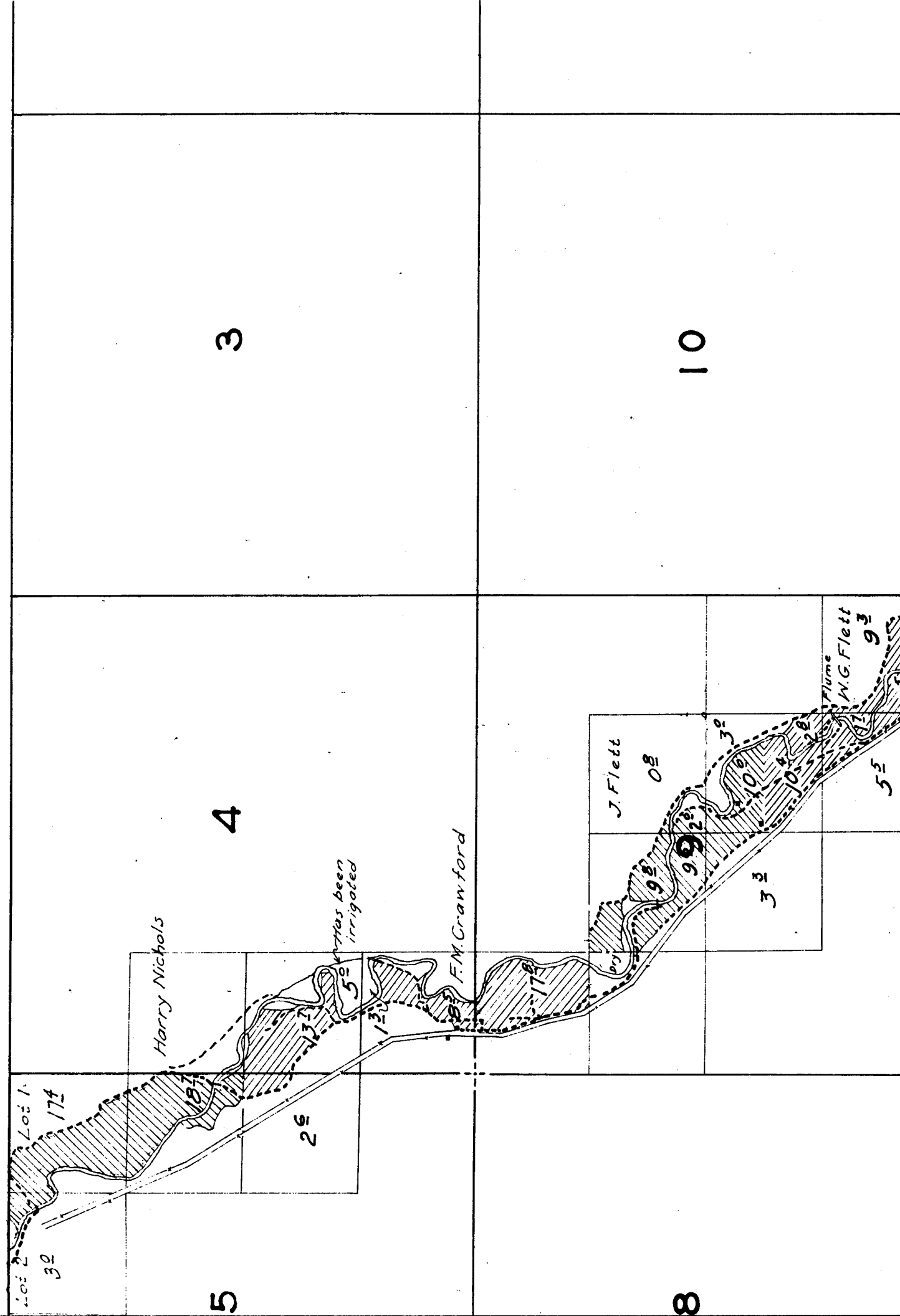
Flume

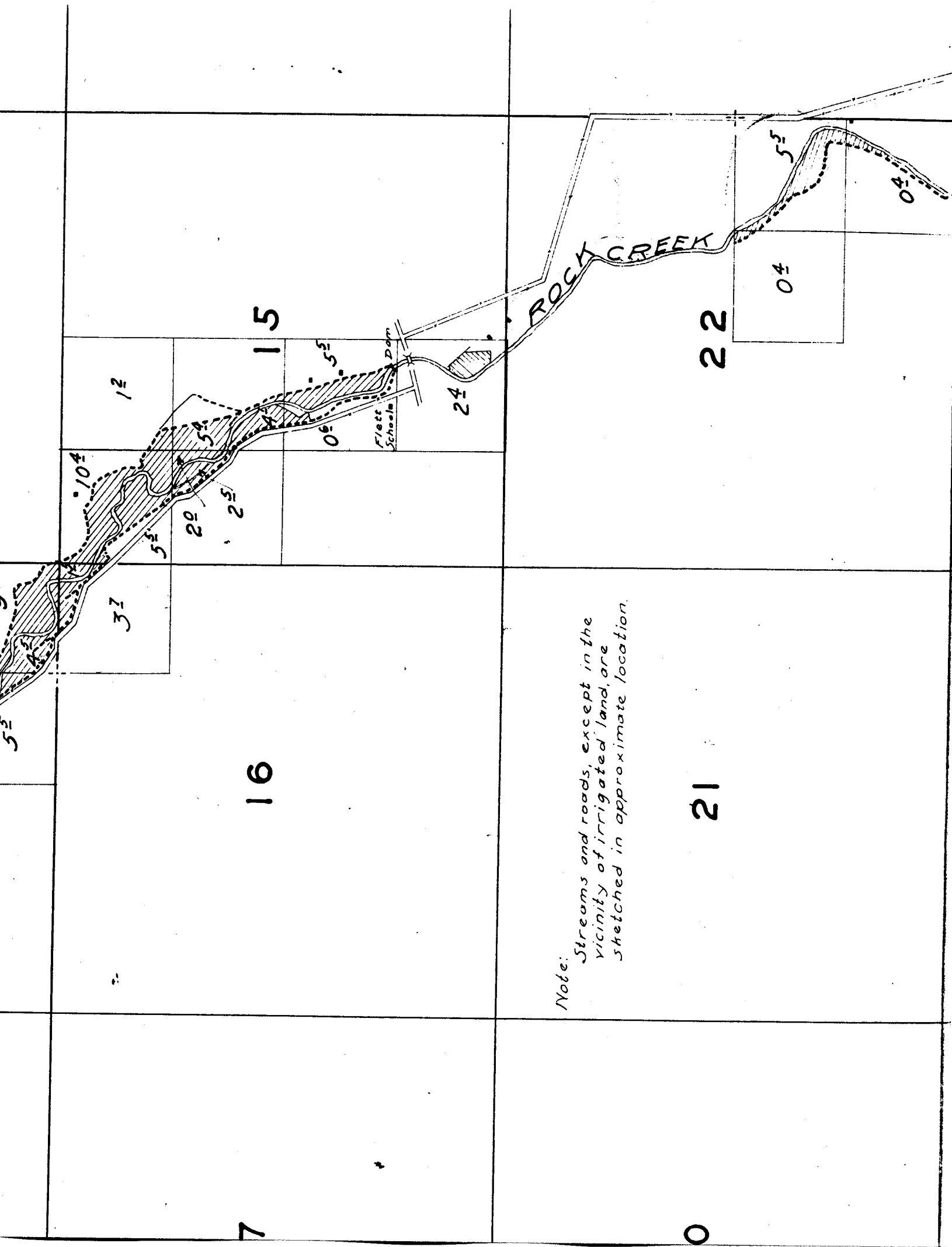
04

Dam



TOWNSHIP 2 S., RANGE 22 E.





2

1

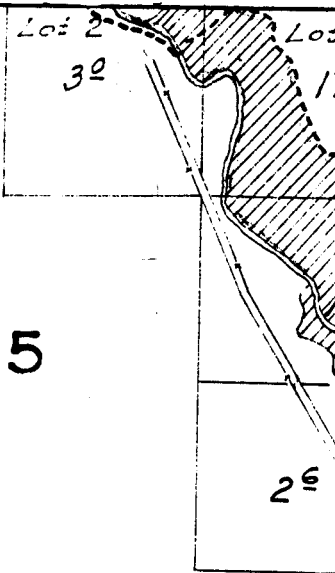
11

12

14

13





6

5

7

8

18

17