

28

33

29

32

30

31

*Note: Streams and Rivers except in the vicinity of irrigated land, sketched in approximate location.*

MATHIS

C. Surveyed Oct 29, 1925

Mrs Mary Adams

CANYON

0'

Spring

Baugh

6

16

21

17

20

18

19



Surveyed October 15 and 16, 1925

15

14

22

23

44

13

24

A.S. Borges

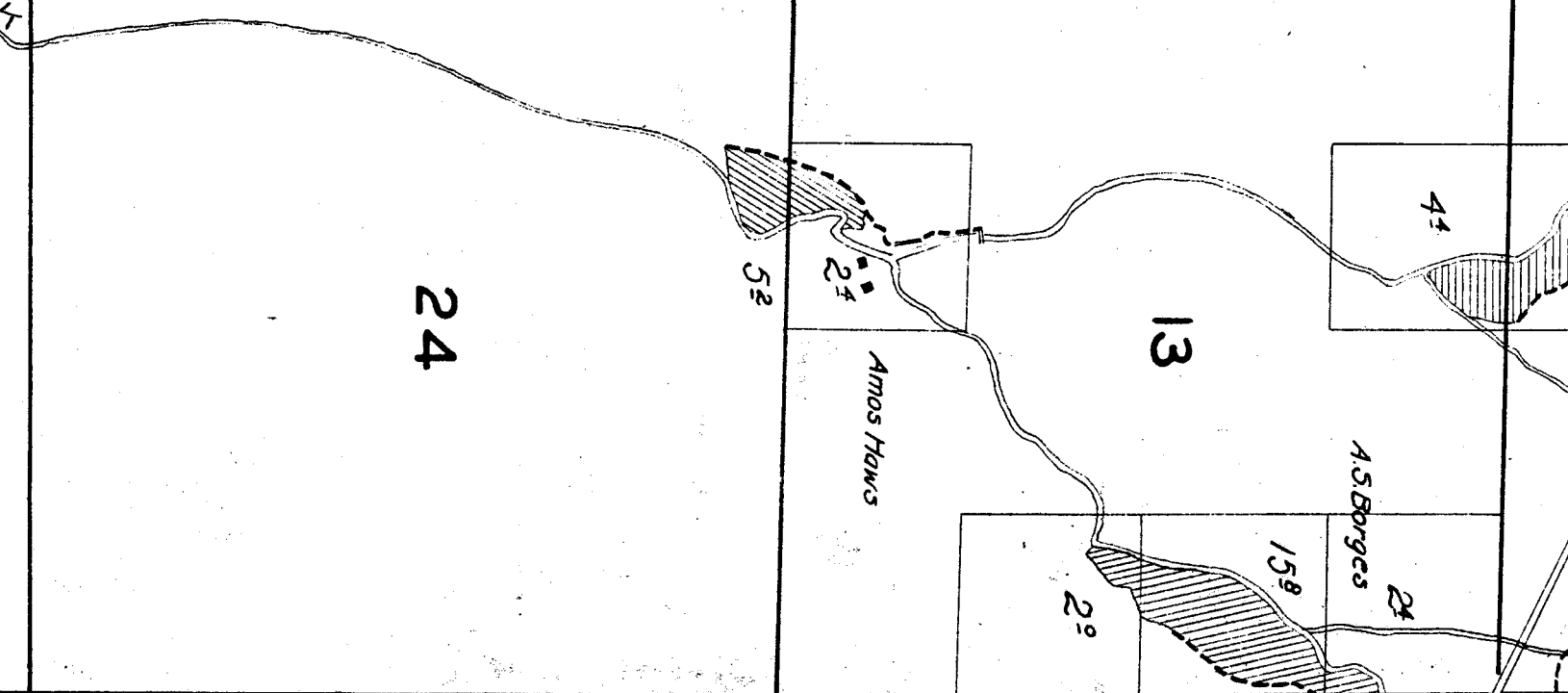
Amos Hawes

158

52

24

2°



21

22

28

27

*Surveyed Sept. 24 and 30, 1925.*

33

34

*Baughn*

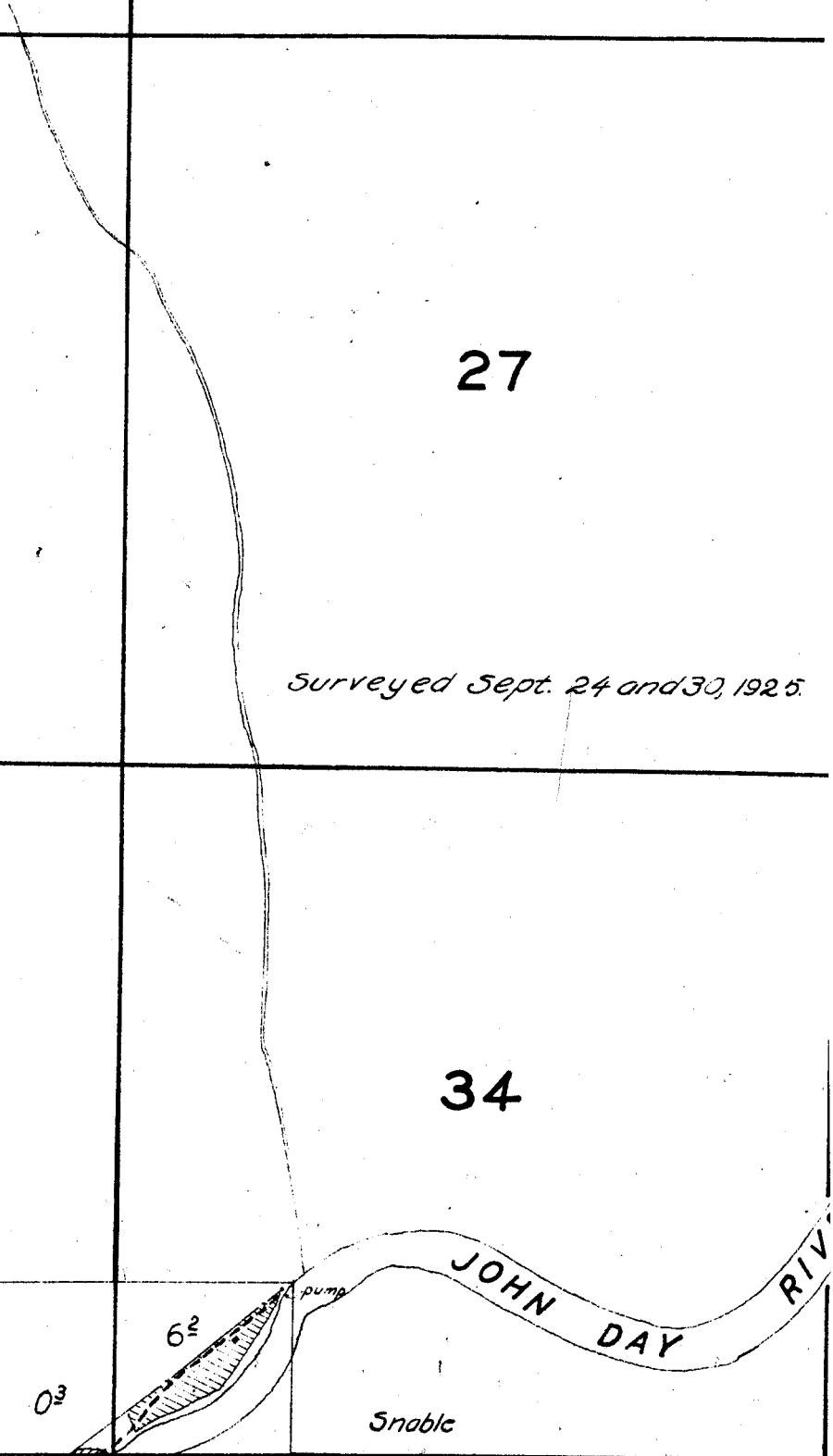
*O<sub>3</sub>*

*G<sub>3</sub>*

*pump*

*Snable*

*JOHN DAY RIVER*

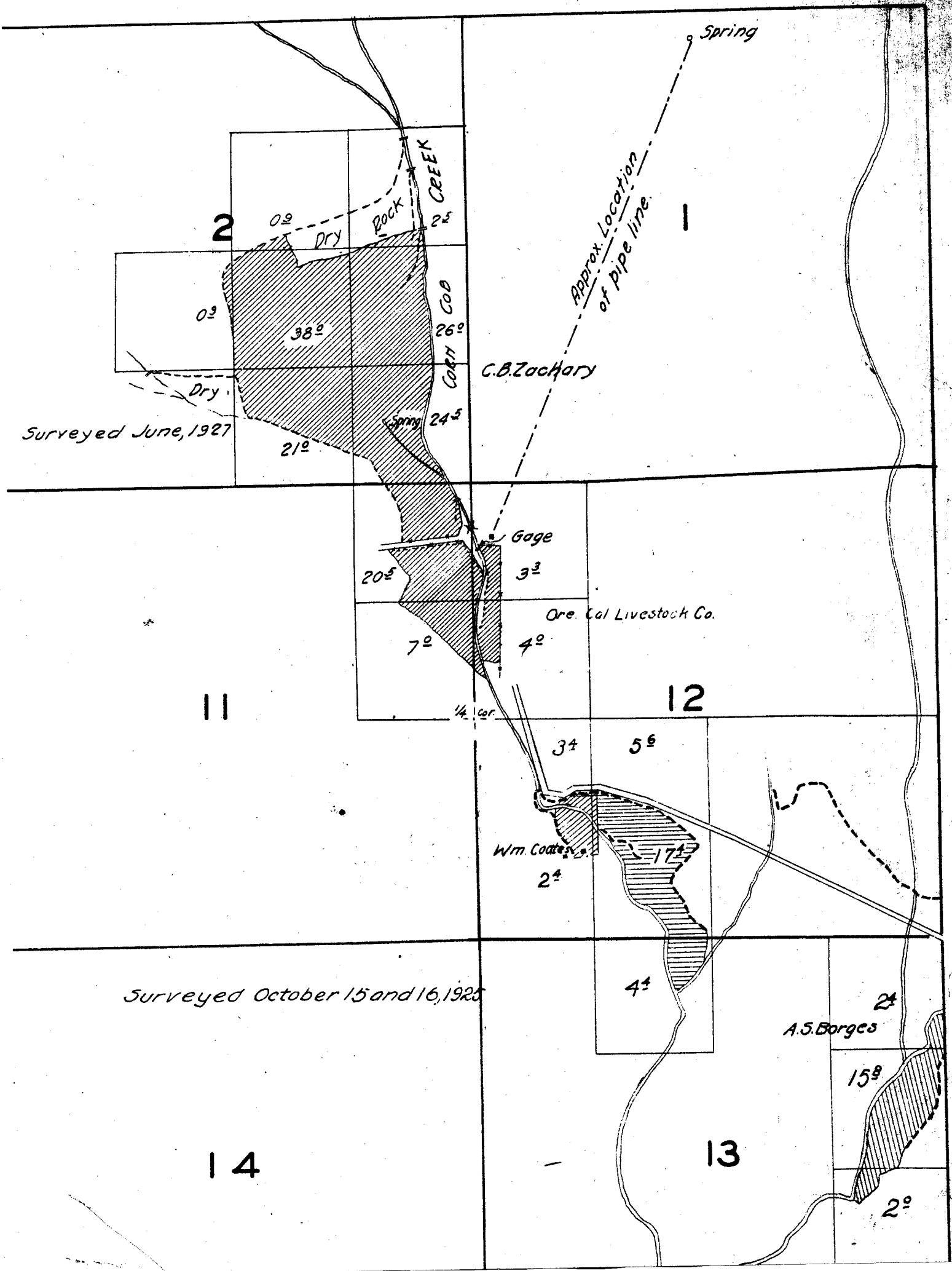


TOWNSHIP 8 S. RANGE 24 E.

	4	3	Surveyed.

		10	

1925



Surveyed June, 1927

Surveyed October 15 and 16, 1925

Approx. Location of pipe line.

C.B. Zachary

Ore. Cal Livestock Co.

Wm. Coates

A.S. Borges

2

1

11

12

14

13

0<sup>±</sup>

0<sup>±</sup>

38<sup>±</sup>

21<sup>±</sup>

20<sup>±</sup>

7<sup>±</sup>

2<sup>±</sup>

5<sup>±</sup>

4<sup>±</sup>

2<sup>±</sup>

15<sup>±</sup>

2<sup>±</sup>

ROCK CREEK

CORNER

1/4 Cor.

Gage

Spring

Rock

Dry

Spring

3<sup>±</sup>

4<sup>±</sup>

3<sup>±</sup>

17<sup>±</sup>

2<sup>±</sup>

27<sup>±</sup>

25<sup>±</sup>

26<sup>±</sup>

24<sup>±</sup>

3<sup>±</sup>

4<sup>±</sup>

3<sup>±</sup>

17<sup>±</sup>

2<sup>±</sup>

15<sup>±</sup>

2<sup>±</sup>

Elmer McQuinn

Lot 4

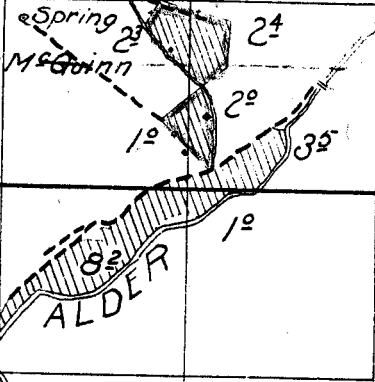
20'

3'

6

5

CREEK



Mrs. Elmer McQuinn

Lot 1.

Lot 2.

Lot 3.

Lot 4.

7

Surveyed October 16, 1925.

8

18

17



50

15

22

16

21