

33

Surveyed May 5 to May 9, 1925.

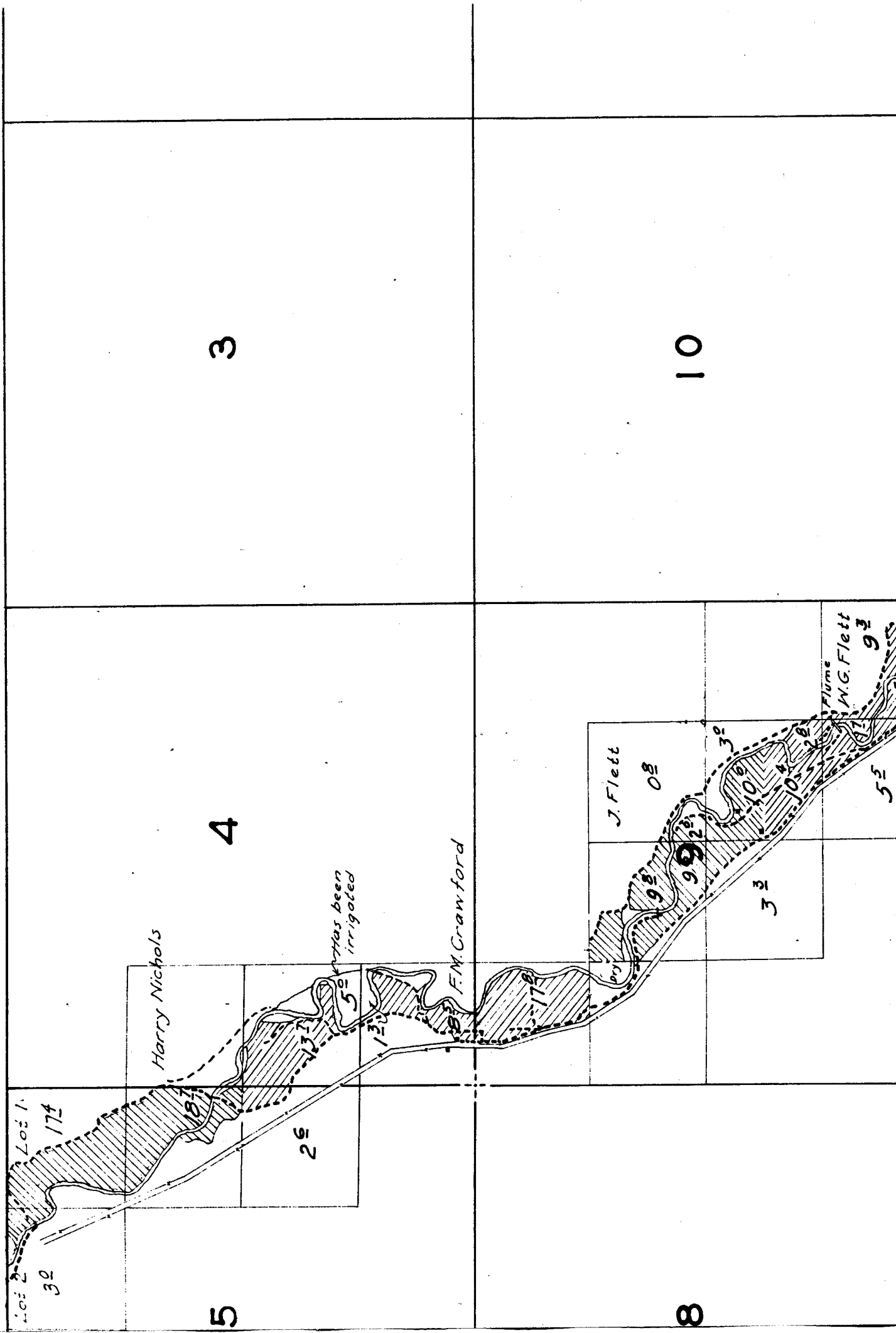
28

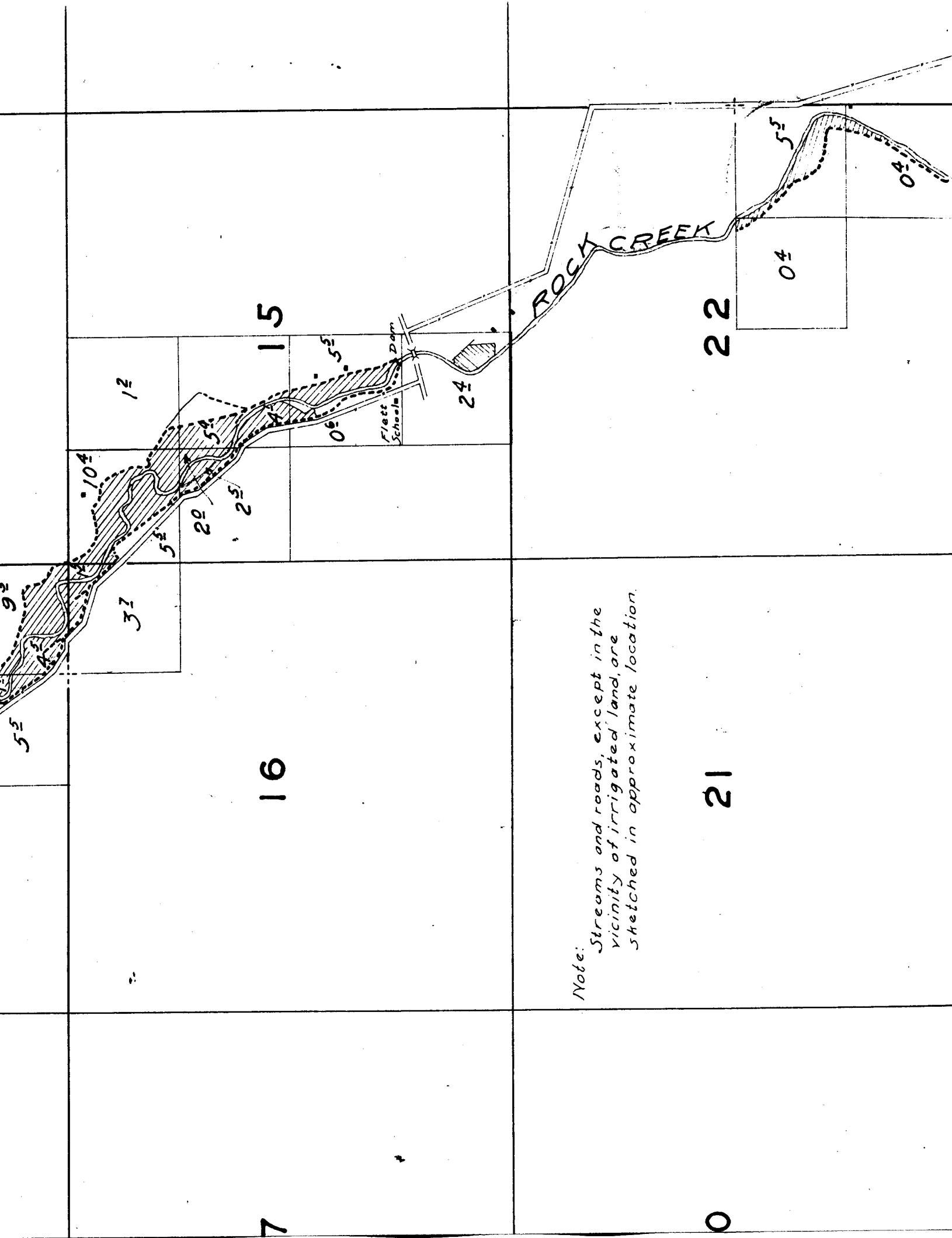
27

21

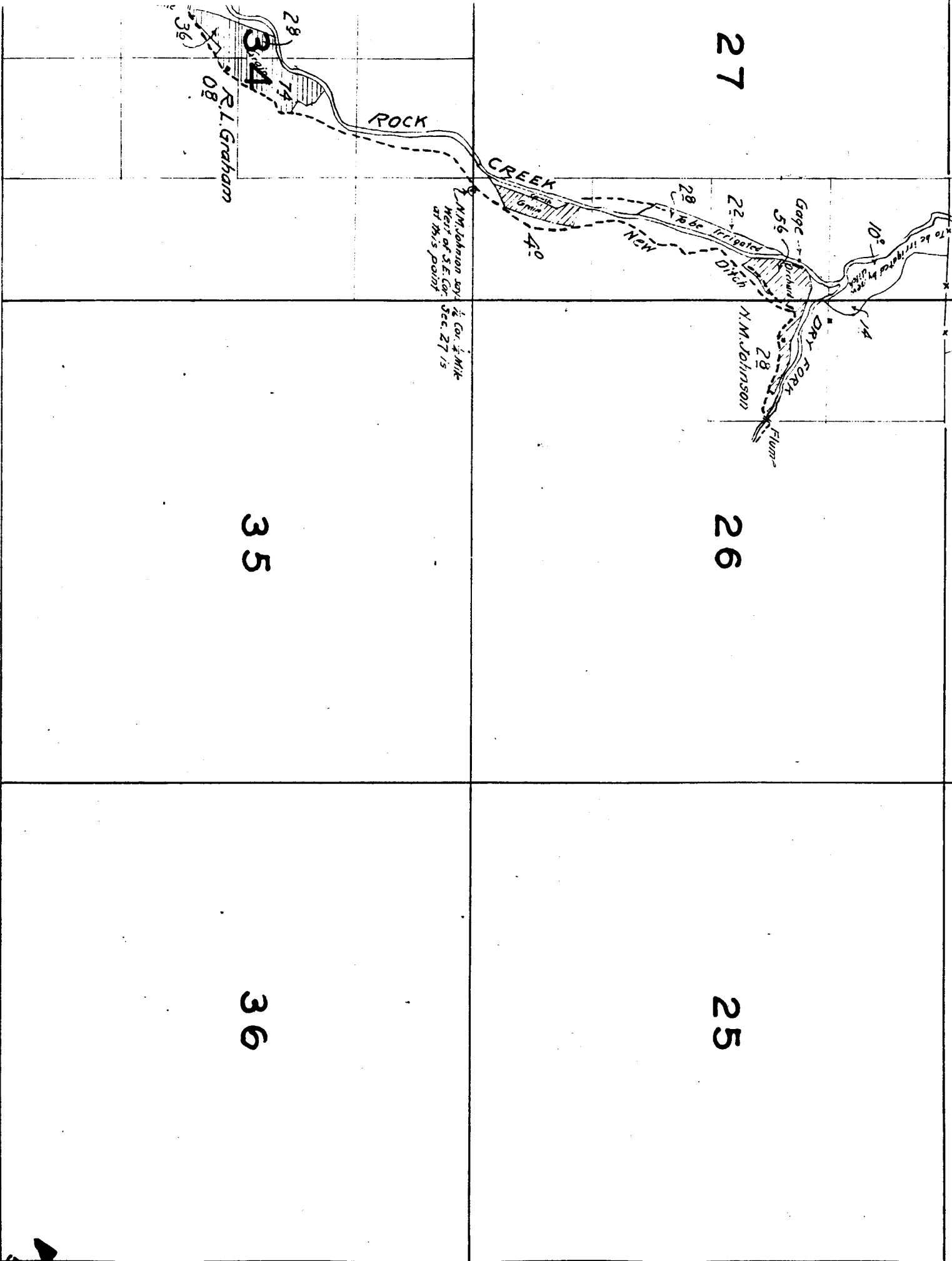
22

TOWNSHIP 2 S., RANGE 22 E.





Note: Streams and roads, except in the vicinity of irrigated land, are sketched in approximate location.



27

26

25

35

36

ROCK

CREEK

NEW
DITCH

DRY FORK

R.L. Graham

N.M. Johnson say 1/2 Cor. 1/4 Mile
West of S.E. Cor. Sec. 27 is
at this point

N.M. Johnson

Flump

14

To be irrigated by
ditch

Gage 56

To be irrigated

28
34
74
08
36

12

12

15

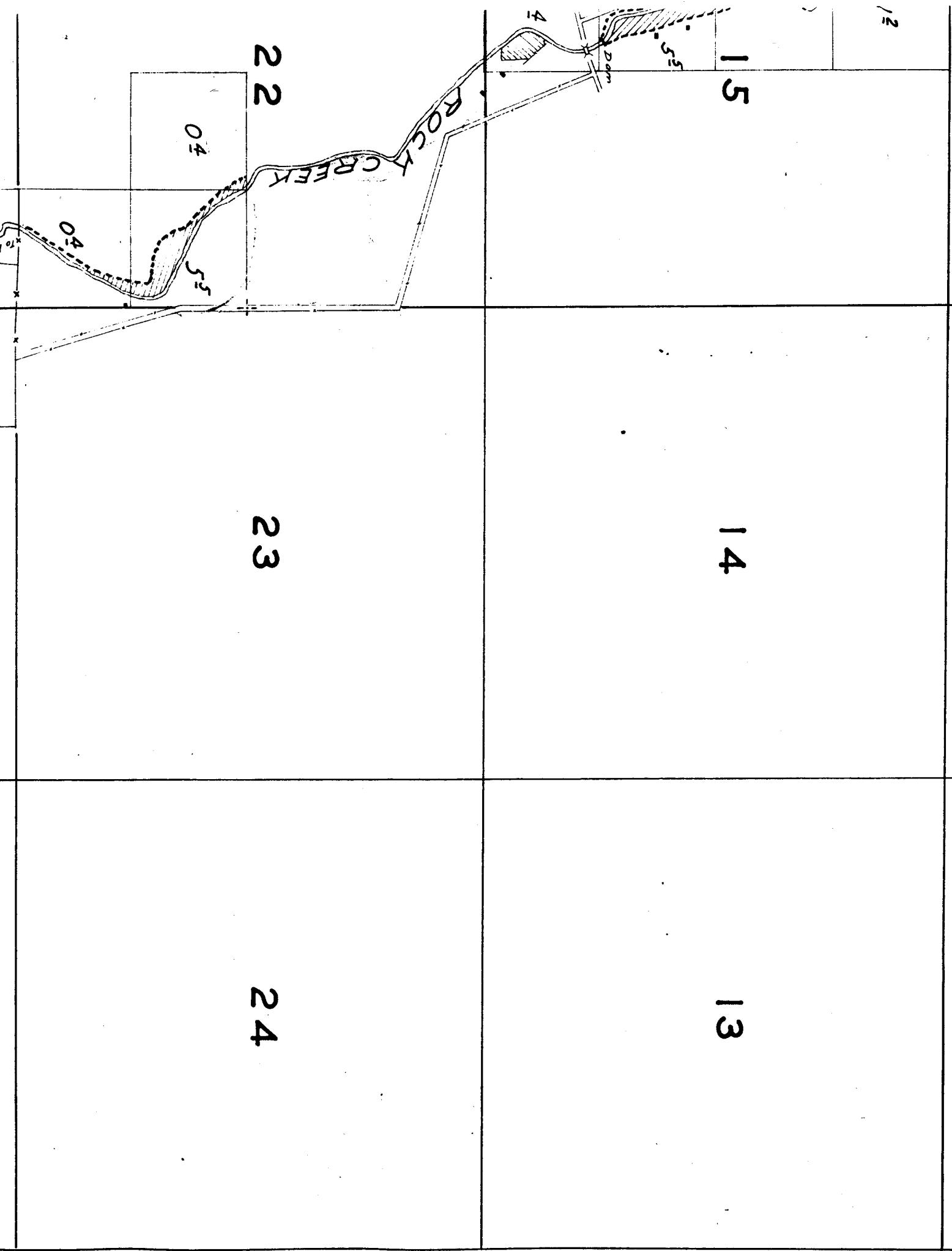
14

13

22

23

24



30

29

28

Surveyed May 5 to May

31

32

33

18

17

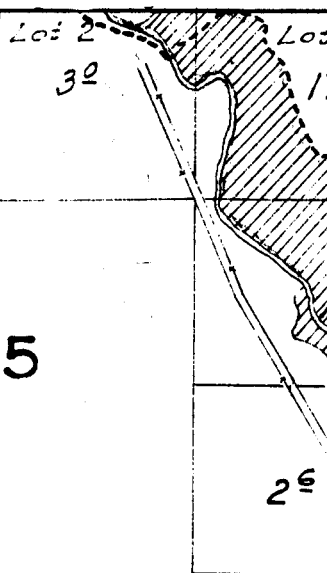
16

19

20

21

*Note:
Streams and roads, ex
vicinity of irrigated
sketched in approxim*



6

5

7

8

18

17

2

1

11

12

14

13