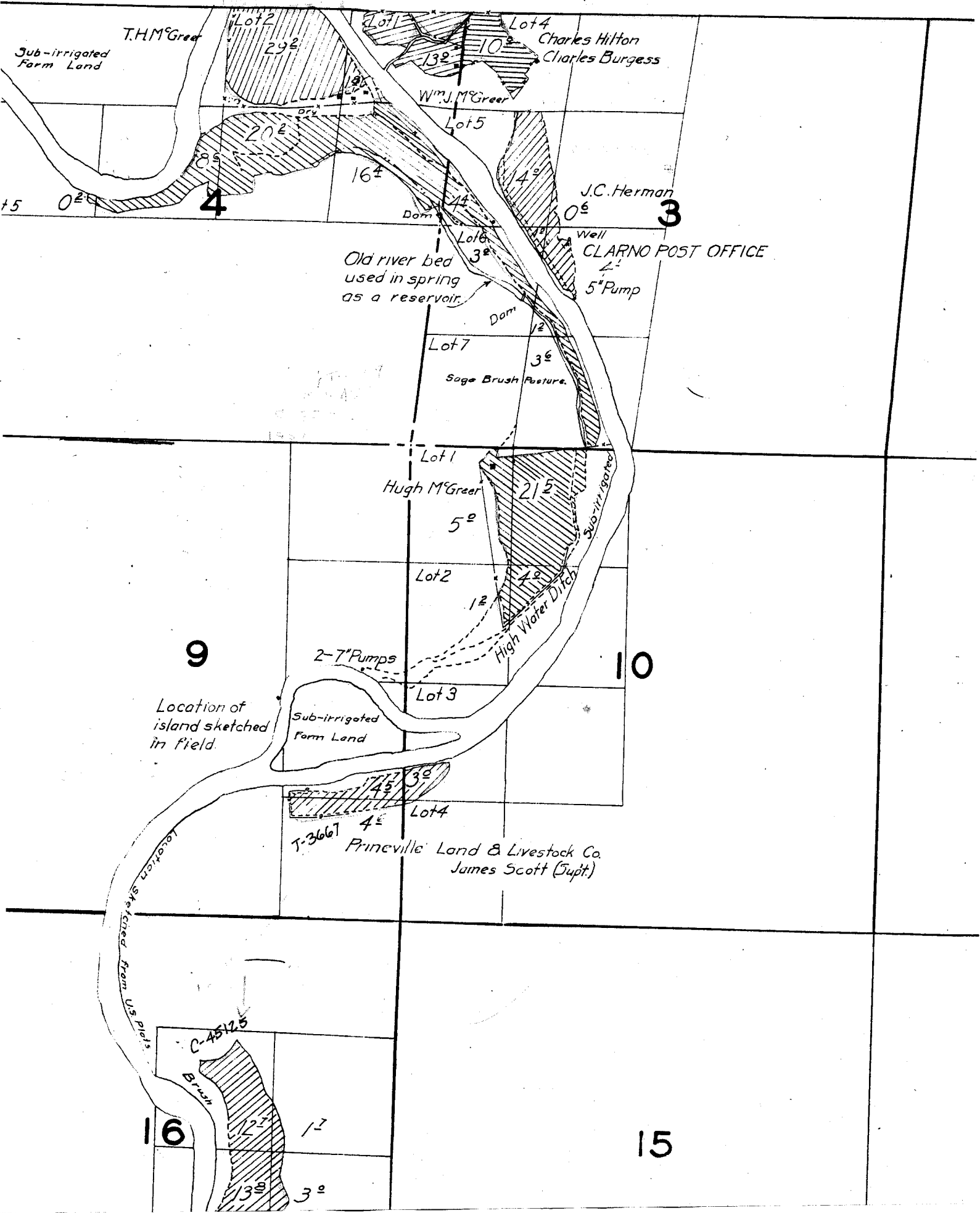


# TOWNSHIP 8 S., RANGE 19 E.



T.H.M. Greer  
Sub-irrigated  
Farm Land

Charles Hilton  
Charles Burgess

Wm. J. McGreer

J.C. Herman

CLARNO POST OFFICE

Old river bed  
used in spring  
as a reservoir.

Hugh McGreer

Prineville Land & Livestock Co  
James Scott (Supt.)

Location of  
island sketched  
in field.

Location sketched from US plat

9

10

16

15

19

20

30

29

Sage Brush  
MUDDY

Sage Brush  
Prineville Land & Livestock  
James Scott (Supt)

31

32

Lot 3

Lot 4

Sage

Brush

& Rock

CURRENT  
Sage Brush and Junipers

Grain

CREEK

Spring Pump

Reservoir

Lot 1

Dry Orchard

Lot 2

Lot 3

Lot 4

Sage

Brush

Lot 4

37

8°

9°

5°

45

45

02

02

02

02

04

04

04

04

04

04

04

04

23

24

*Location sketched from U.S. Plats.*

C.S. Hicks  
Sub-irrigated  
Farm Land

26

Rim Rock



Brush

25

0 1/2

6'ump

*Location sketched from U.S. Plats.*

35

36



29

28

27

32

33

34

509<sup>e</sup> Firreville Land & Livestock Co  
James Scott (Supt)

Brush

Gage Brush

Rim Rock

and Junipers  
CREEK

MUDDY

9<sup>e</sup>

04

32

Flume

50

51

52

53

54

55

56

57

58

59

60

61

62

63

64

65

66

67

68

69

70

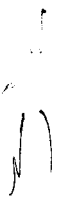
71

72

73

74

75



17

16

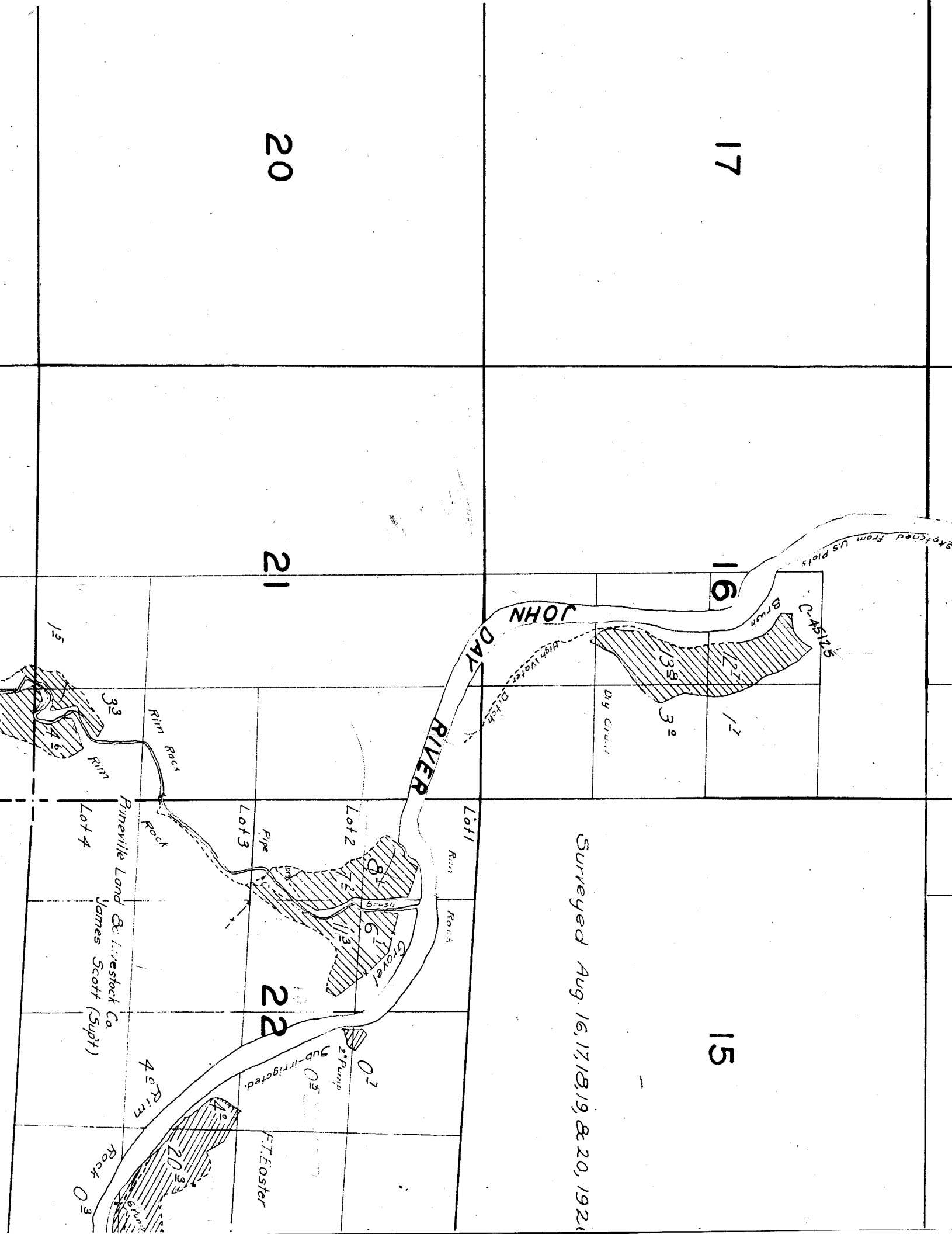
15

20

21

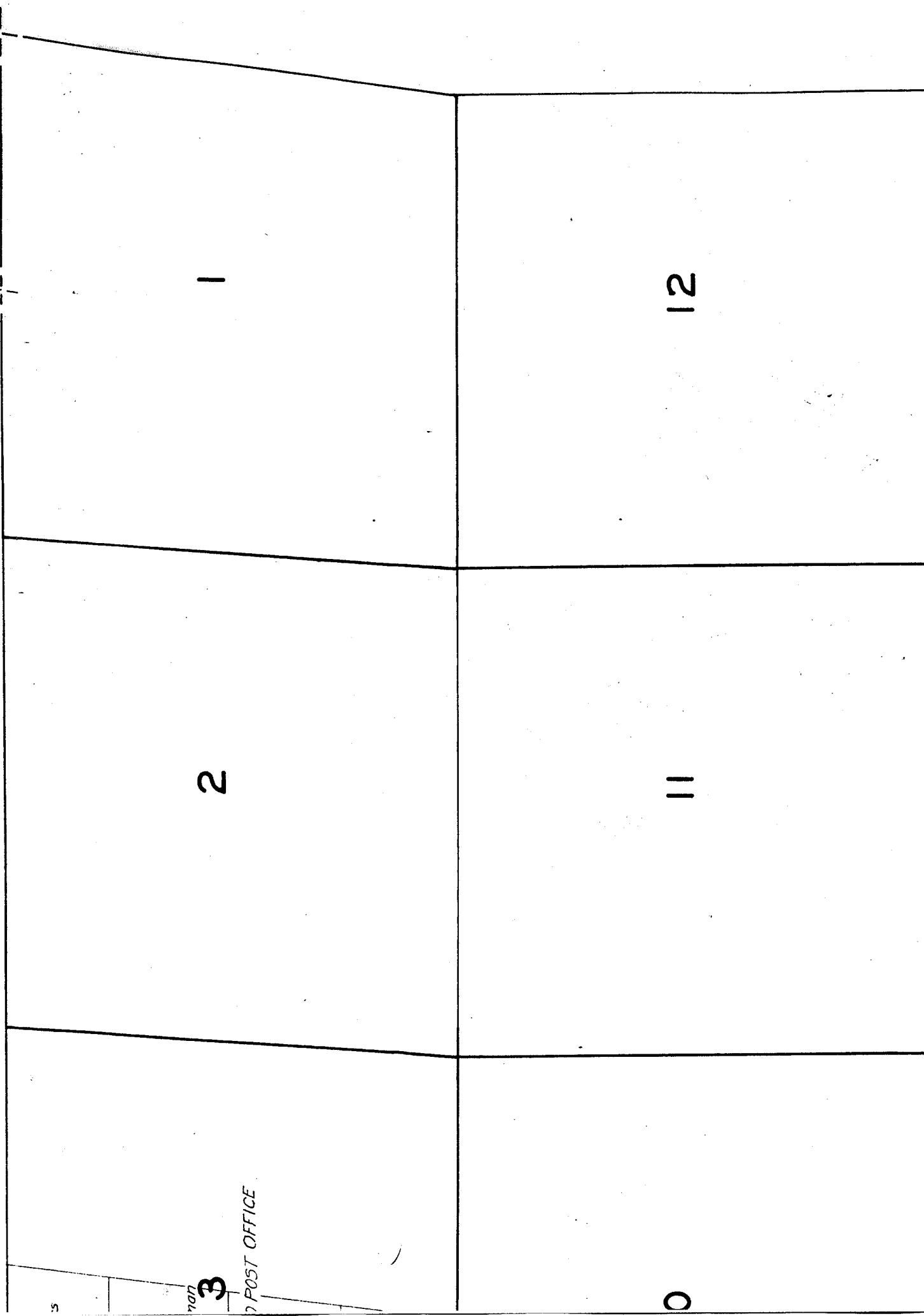
22

Surveyed Aug. 16, 17, 18, 19, & 20, 1924



GE 19 E.

42-2-1



5

POST

3

POST OFFICE

2

1

0

11

12

15

14

13

'6, 17, 18, 19, & 20, 1926.

2

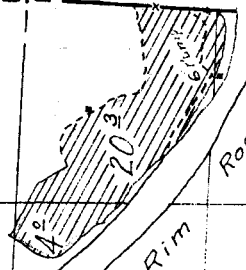


2" Pump

0.5

Sub-irrigated

F.T. Easter



4" Rim

Rock 0 3

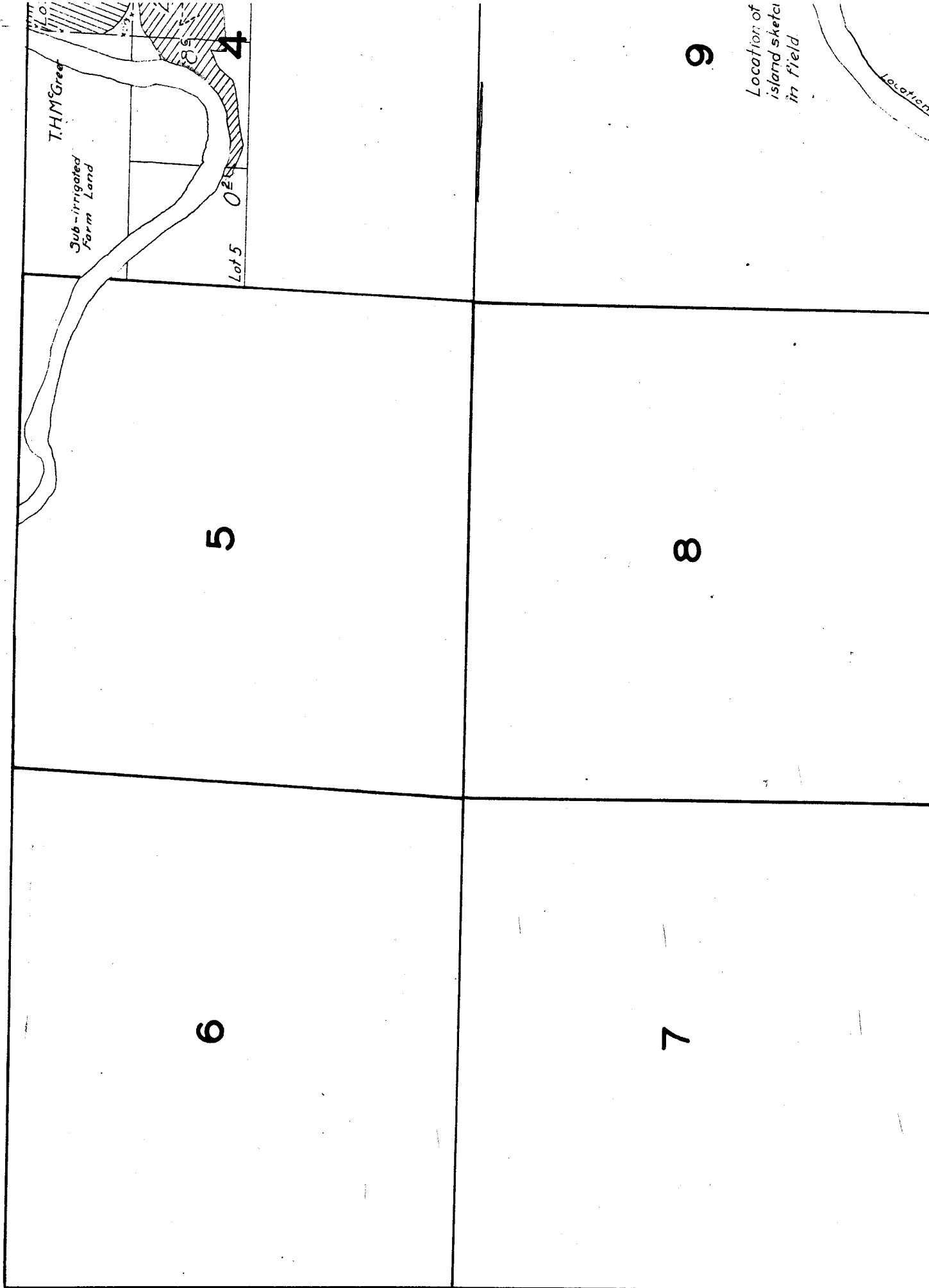
Co. Supt)

Location sketched from US Plots

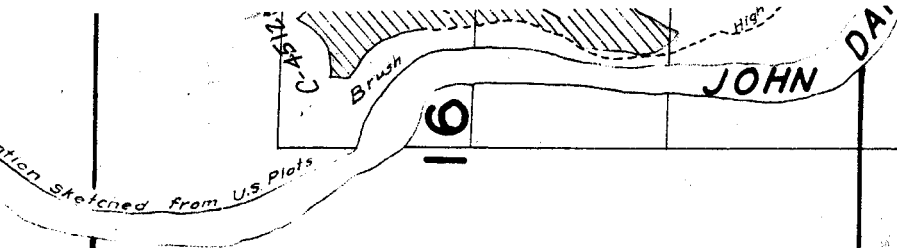
23

24

# TOWNS







16

21

17

20

18

19

lot