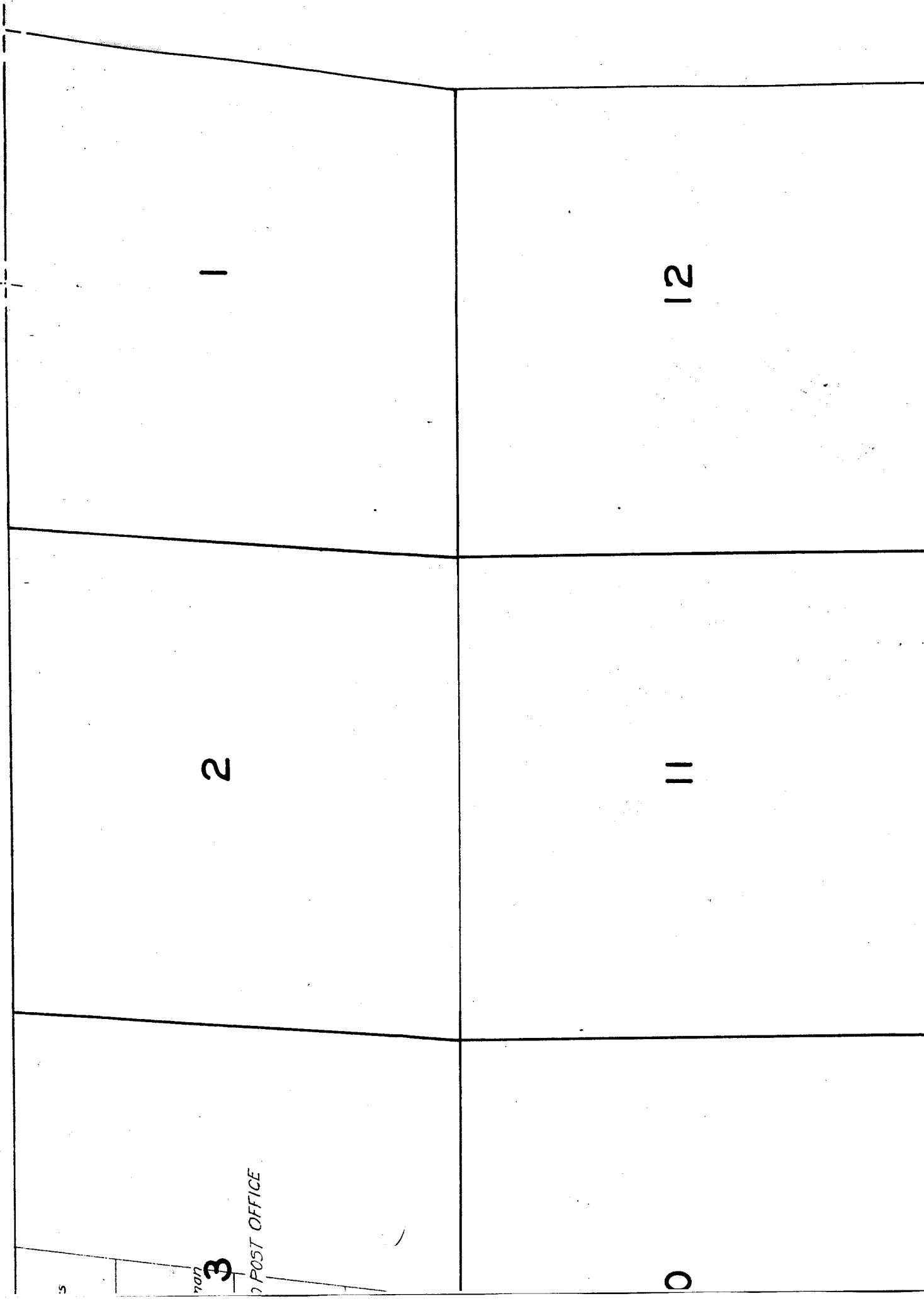


42-2-1

SE 19 E.



S

3

POST OFFICE

0

2

11

1

12

15

14

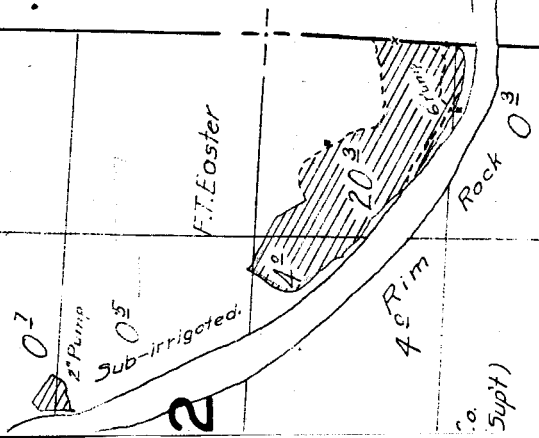
13

16, 17, 18, 19, & 20, 1926.

2

23

24



15

Surveyed Aug. 16, 17, 18, 19, & 20, 1921

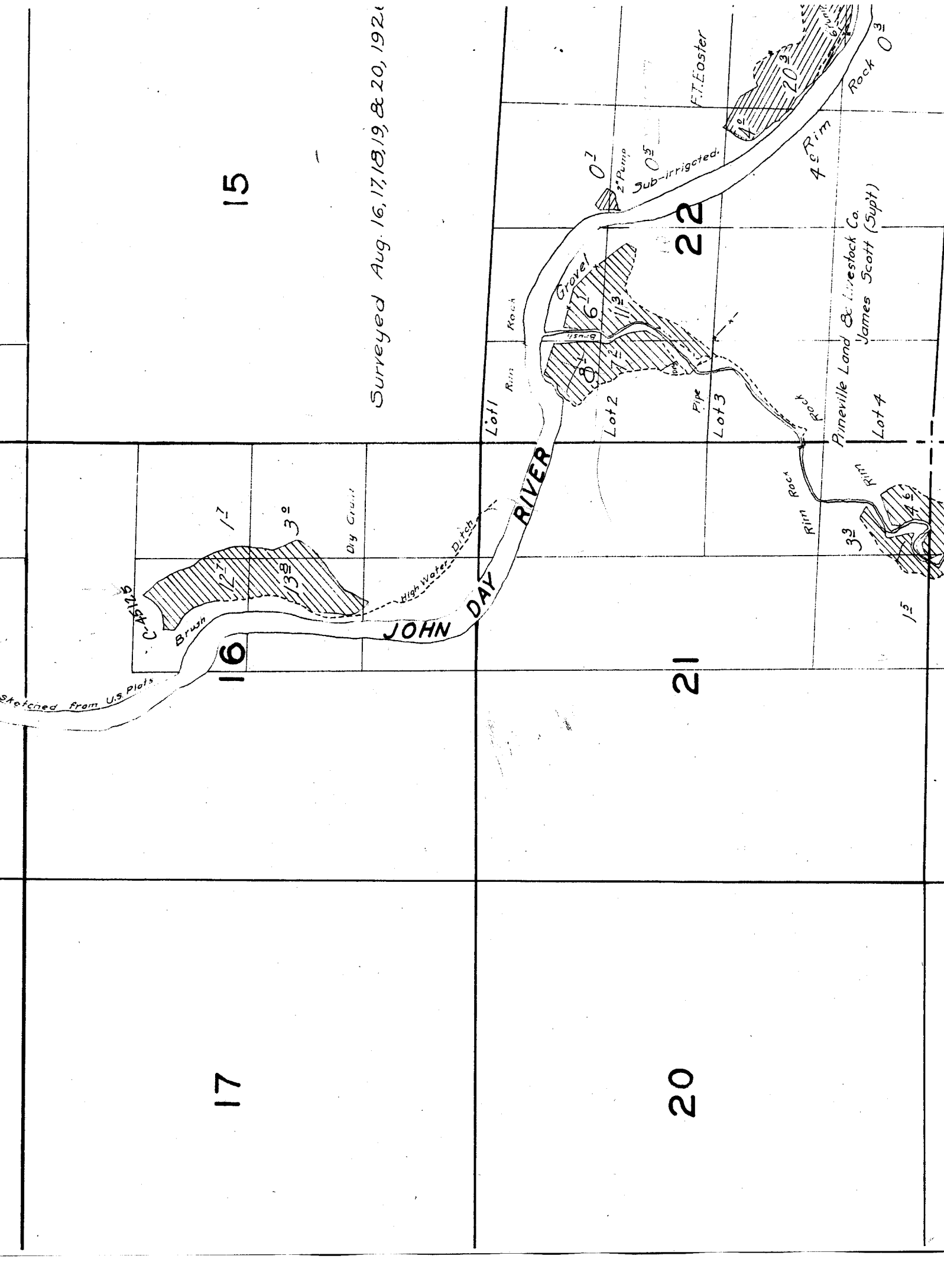
16

17

22

21

20



Stetched from U.S. plots

C-45125

Brush

12

13

Diy Grant

High Water

JOHN DAY RIVER

Lot 1

Rim Rock

Grover

Lot 2

Pipe

Lot 3

Rim Rock

Pineville Land & Livestock Co.  
James Scott (Supt)

Lot 4

F.T. Easter

0

1

2

3

4

5

45 Rim

Rock 0

3

4

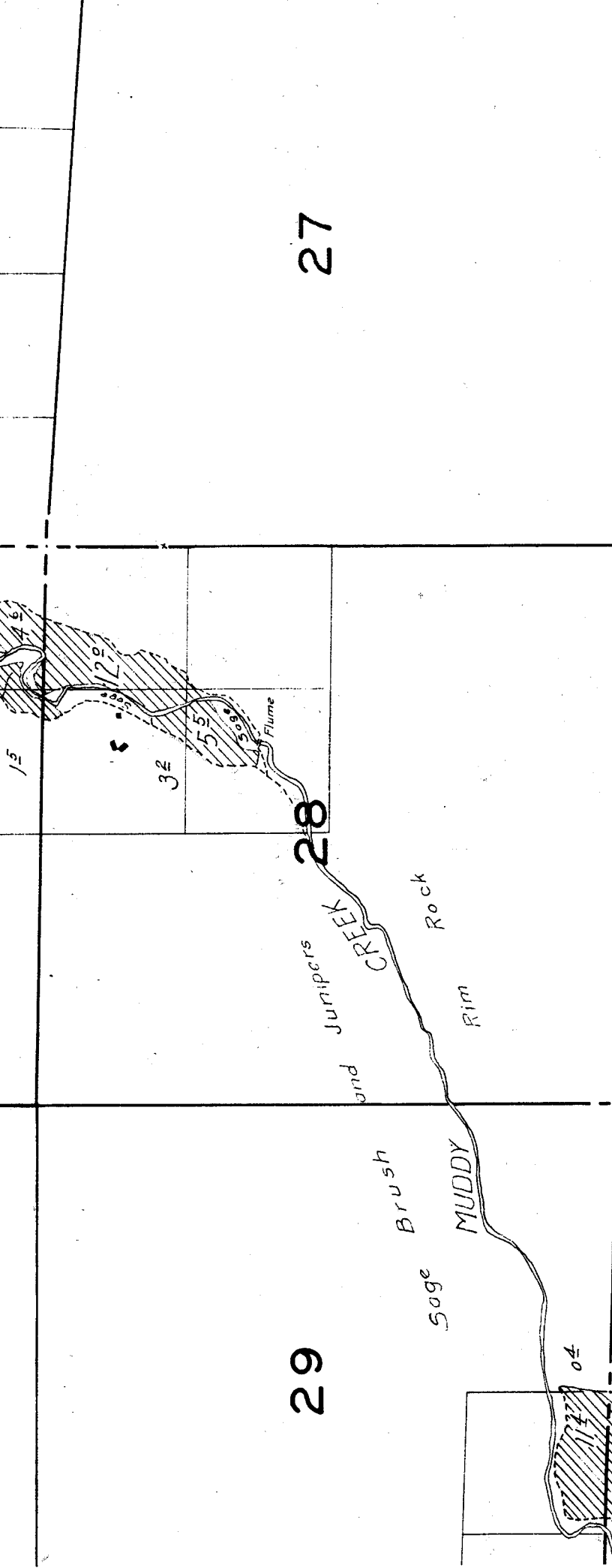
5

03

James Scott (Supt)

Lot 4

15



27

28

29

33

32

34

15

32

04

92  
Sage  
Brush

Sage  
Brush  
Prineville Land & Livestock Co  
James Scott (Supt)

and  
Junipers  
CREEK

Rock  
Rim

Sage  
Brush  
MUDDY

Flume

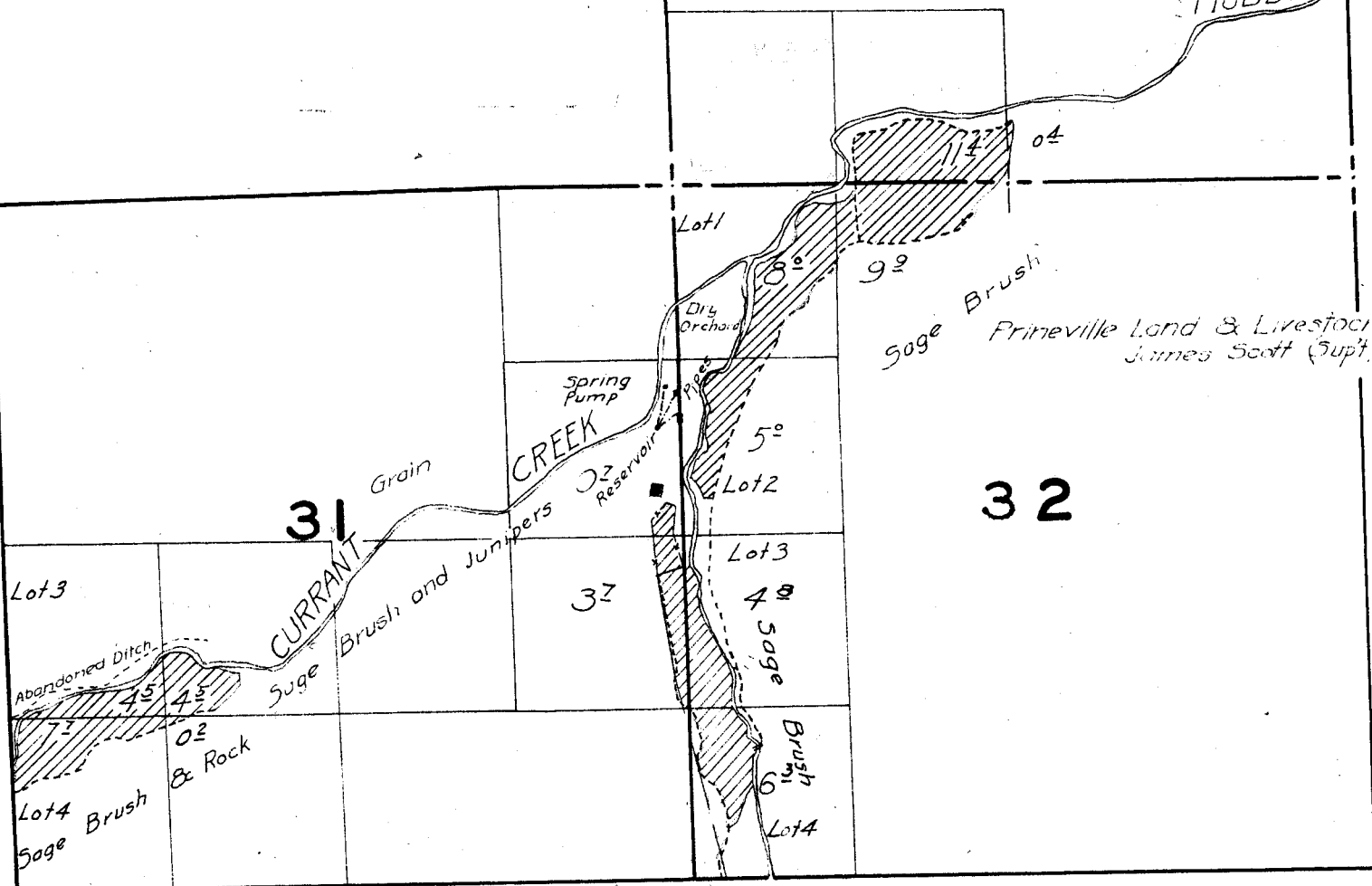
19

20

30

29

Sage Brush  
MUDDY



23

24

*Location sketched from U.S. Plots.*

C.S. Hicks  
Sub-Irrigated  
Farm Land

26

Rim Rock

4°

Sage

Brush

25

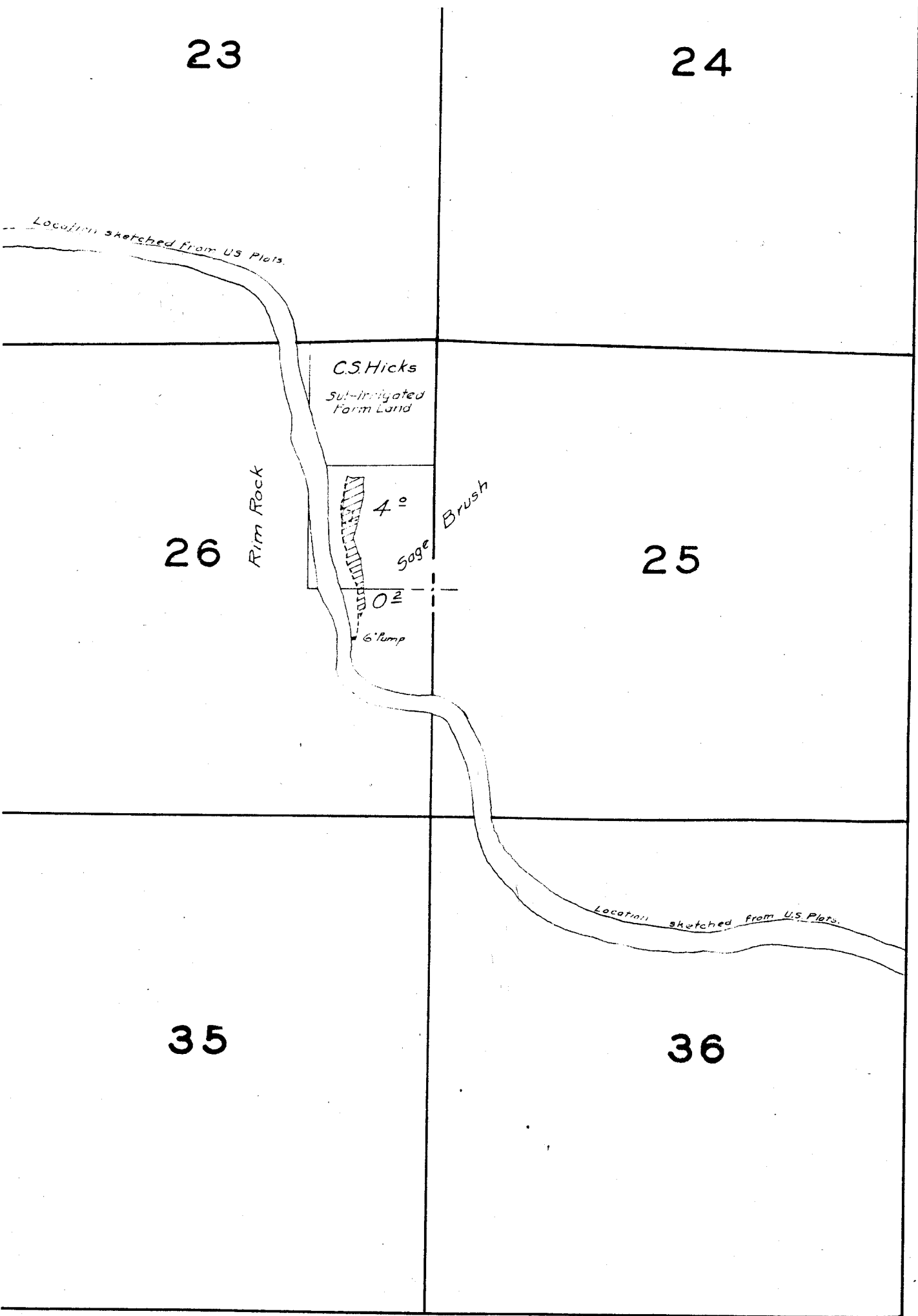
0°

6' Pump

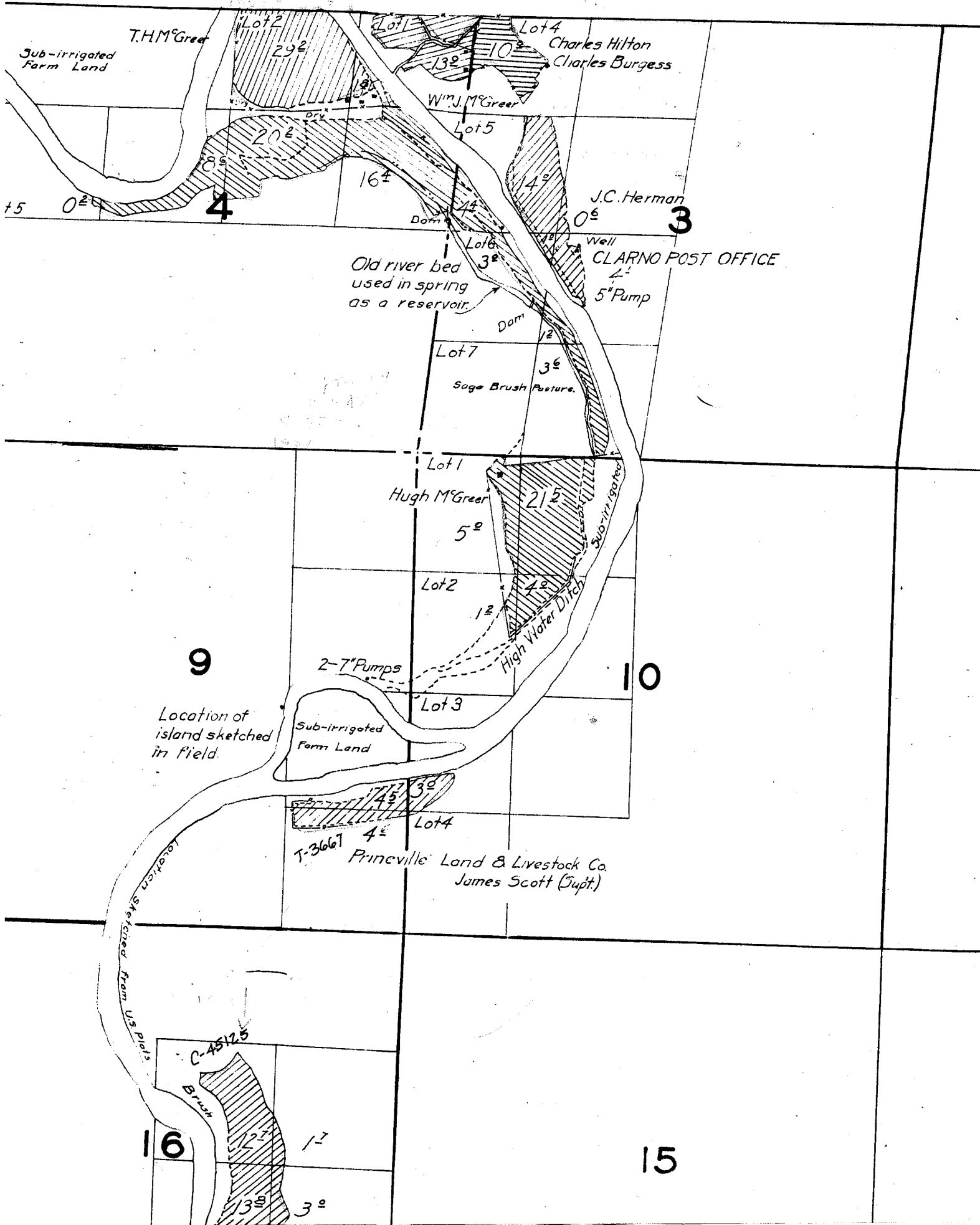
35

*Location sketched from U.S. Plots.*

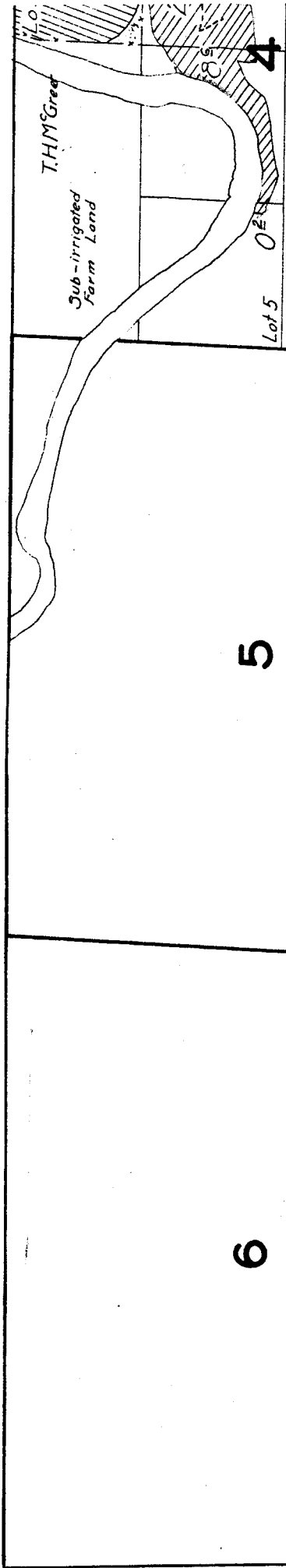
36



# TOWNSHIP 8 S. RANGE 19 E.



# TOWNS



5

6

4

Lot 5  
0 2 1/4

T.H.M. Creek

Sub-irrigated  
Farm Land

7

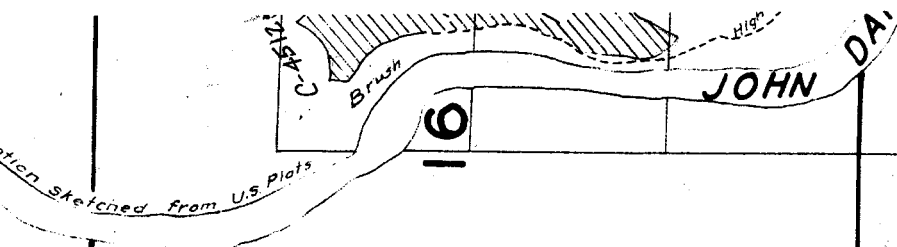
8

9

Location of  
island sketch  
in field.

Location





21

17

20

18

19

15

14

13

22

23

24

27

26

25

*Note: Stream, except in the vicinity of irrigated land, sketched in approximate location.*

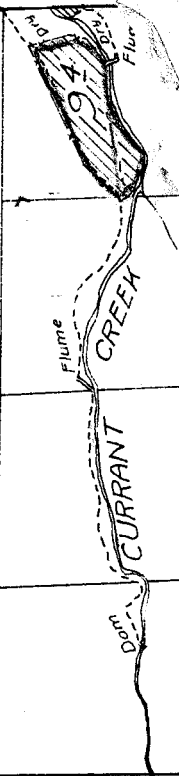
34

35

36

Surveyed Aug. 20, 1926.

Prineville Land & Livestock Co.  
James Scott (Supt.)



30

29

28

31

32

33

18

17

16

19

20

21

TOWNSHIP 8 S., RANGE 18 E.

	4	3	

	9	10	

15

22

16

21

21

22

28

27

33

34





2

1

11

12

14

13

6

5

7

8

18

17