

15

14

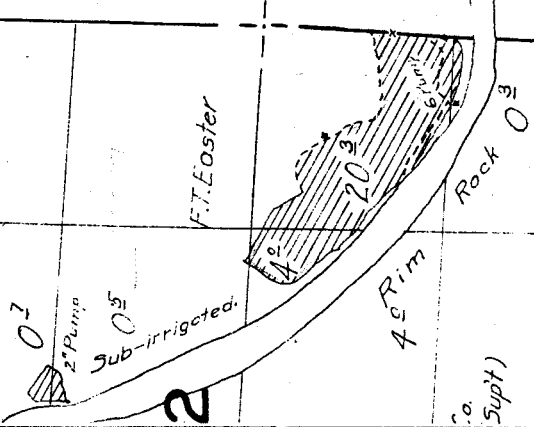
13

'6, 17, 18, 19, & 20, 1926.

2

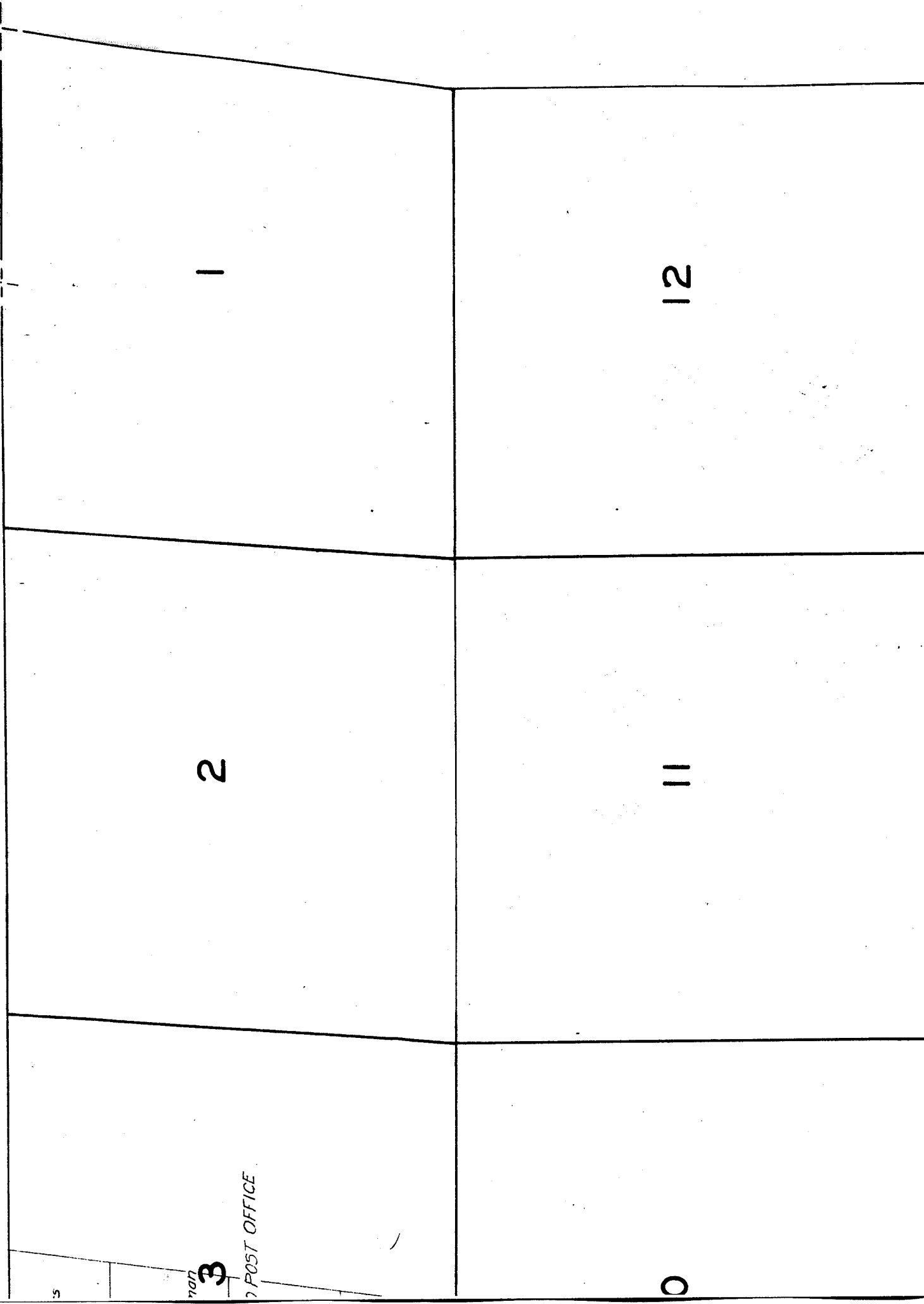
23

24



SE 19 E.

42-2-1



23

24

Location sketched from U.S. Plots.

C.S. Hicks
Sub-irrigated
Farm Land

26

Rim Rock

4°

Sage

Brush

25

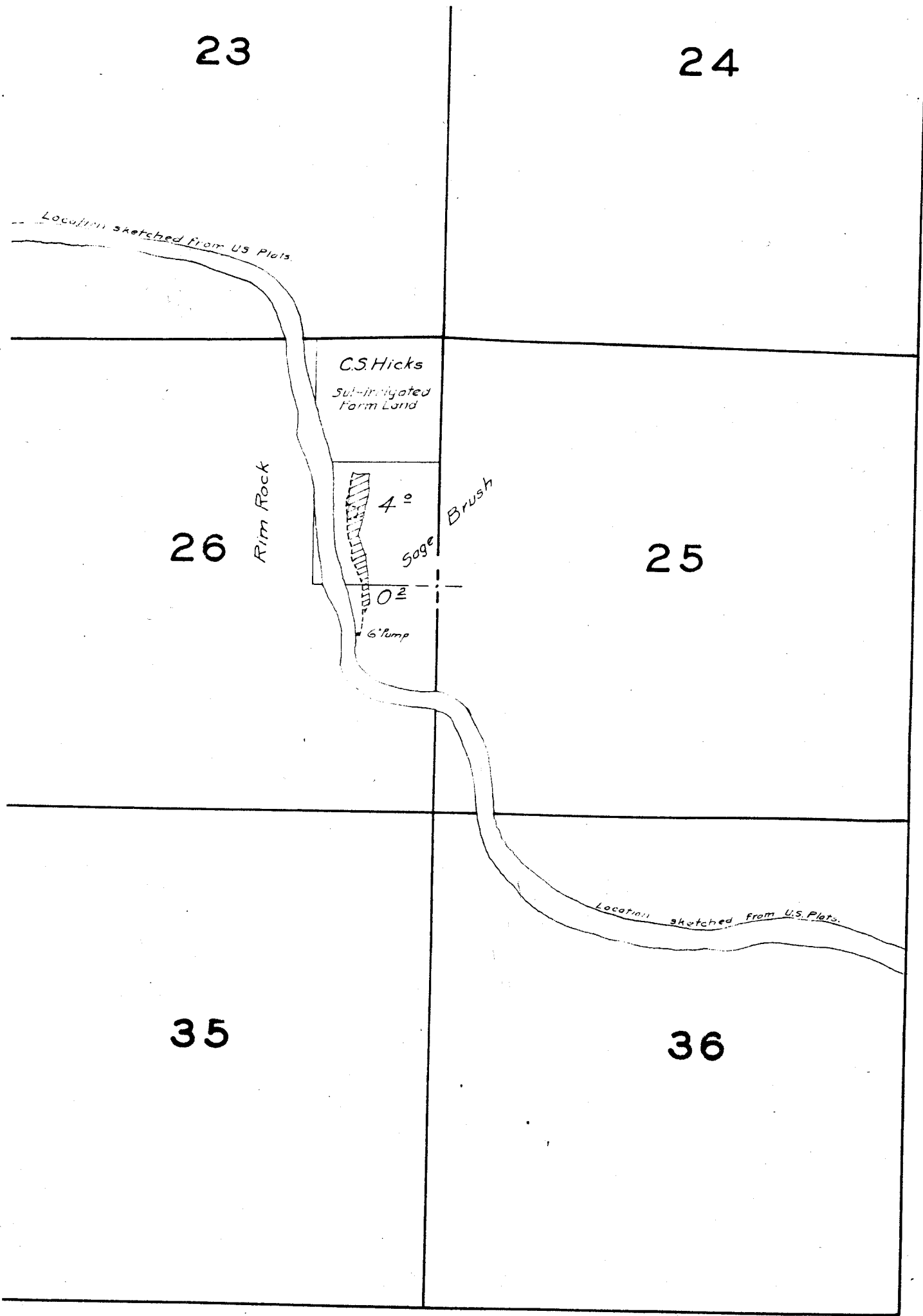
0°

6' Pump

35

36

Location sketched from U.S. Plots.



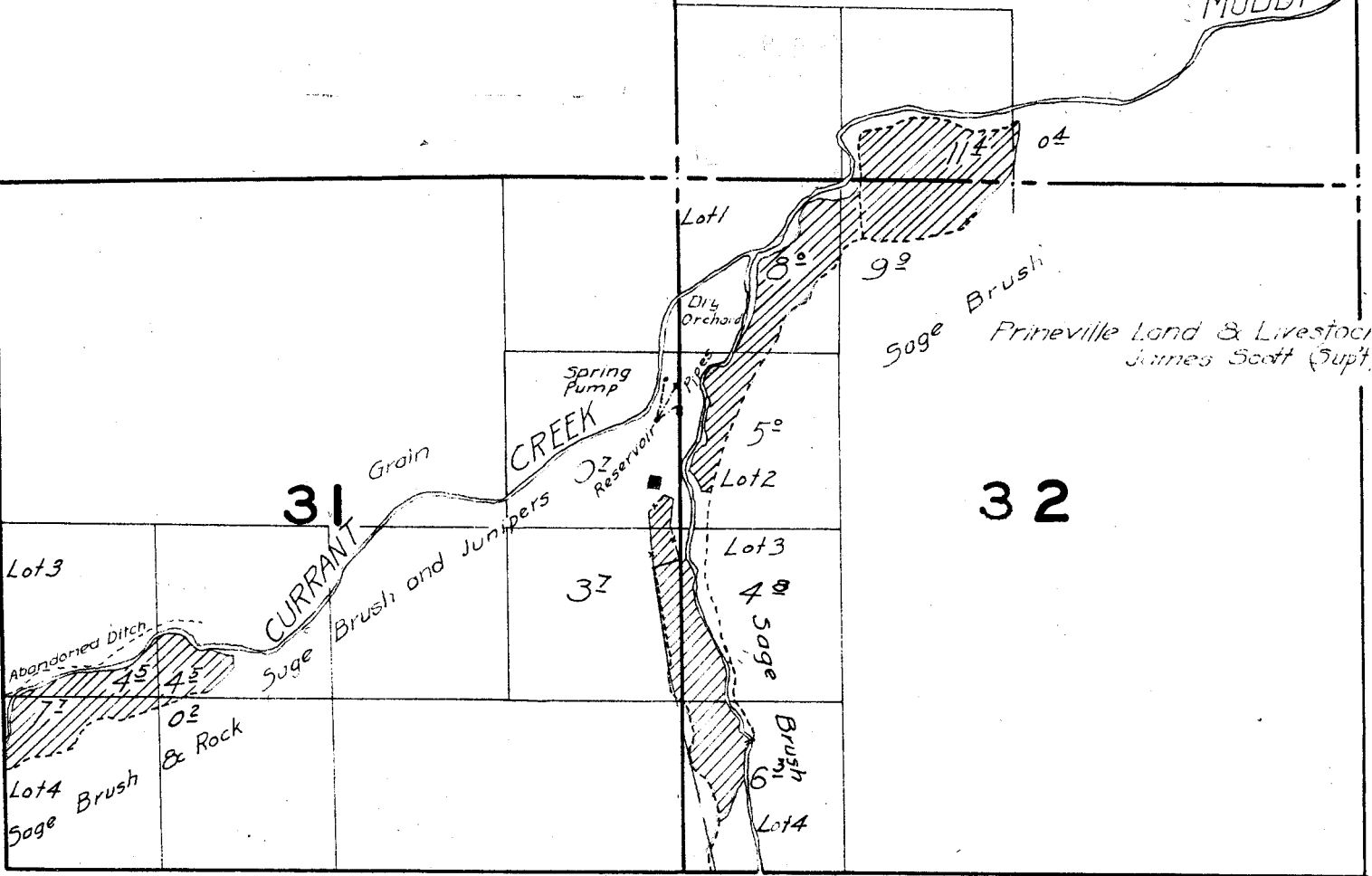
19

20

30

29

Sage Brush
MUDDY



31

32

37

Lot 3

Lot 4

Abandoned Ditch

CURRENT

CREEK

Lot 1

Lot 2

Lot 3

Lot 4

Spring Pump

Reservoir

Dry Orchard

Prineville Land & Livestock
James Scott (Supt.)

Sage & Rock

Sage Brush

Sage

Brush and Junipers

Grain

8°

5°

4°

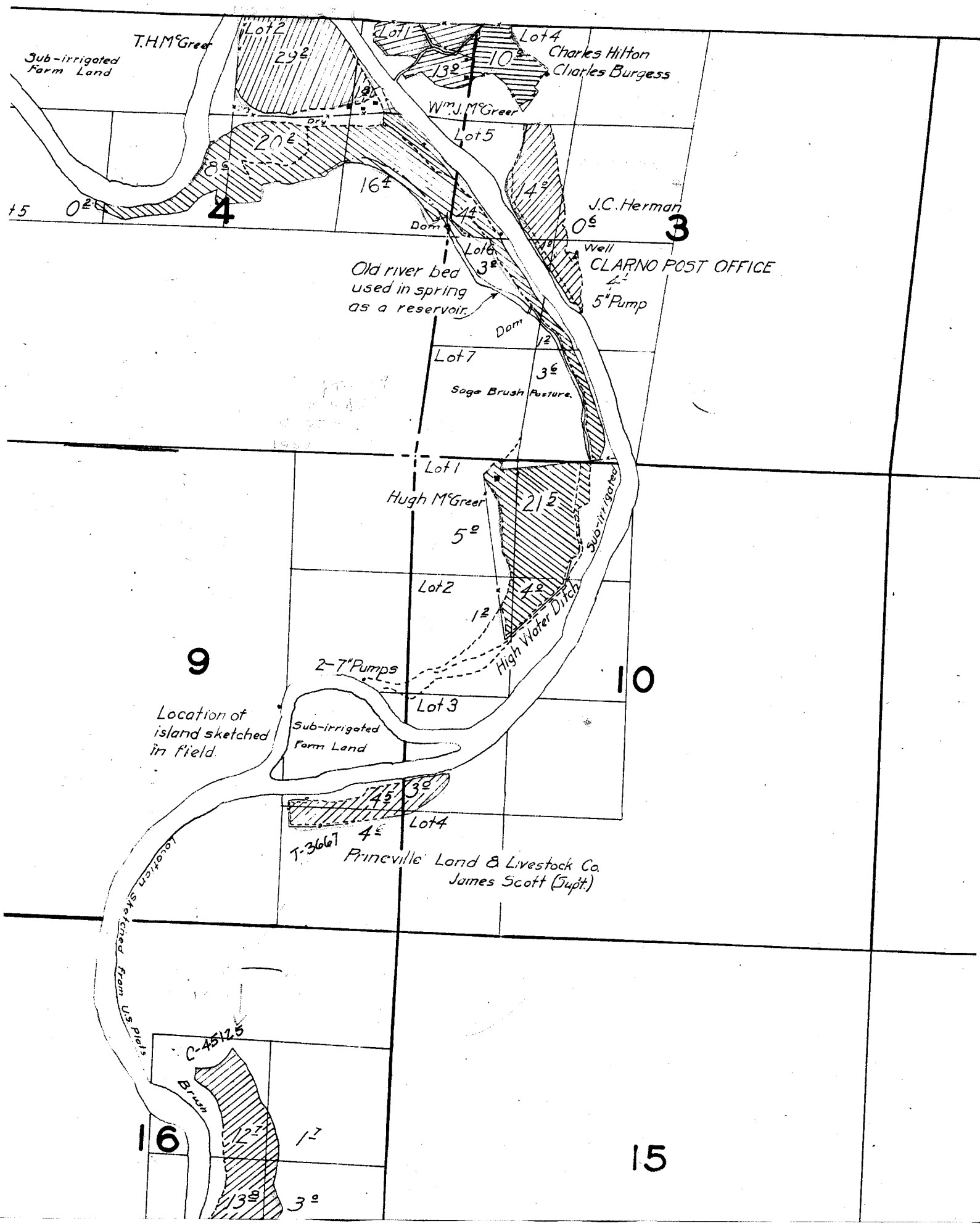
9°

9°

04

Sage Brush

TOWNSHIP 8 S. RANGE 19 E.



29

28

27

32

33

34

Sage Brush

and Junipers

Muddy Creek
Rim Rock

Brush

Prineville Land & Livestock Co
James Scott (Supt)

92

04

32

Flume



17

16

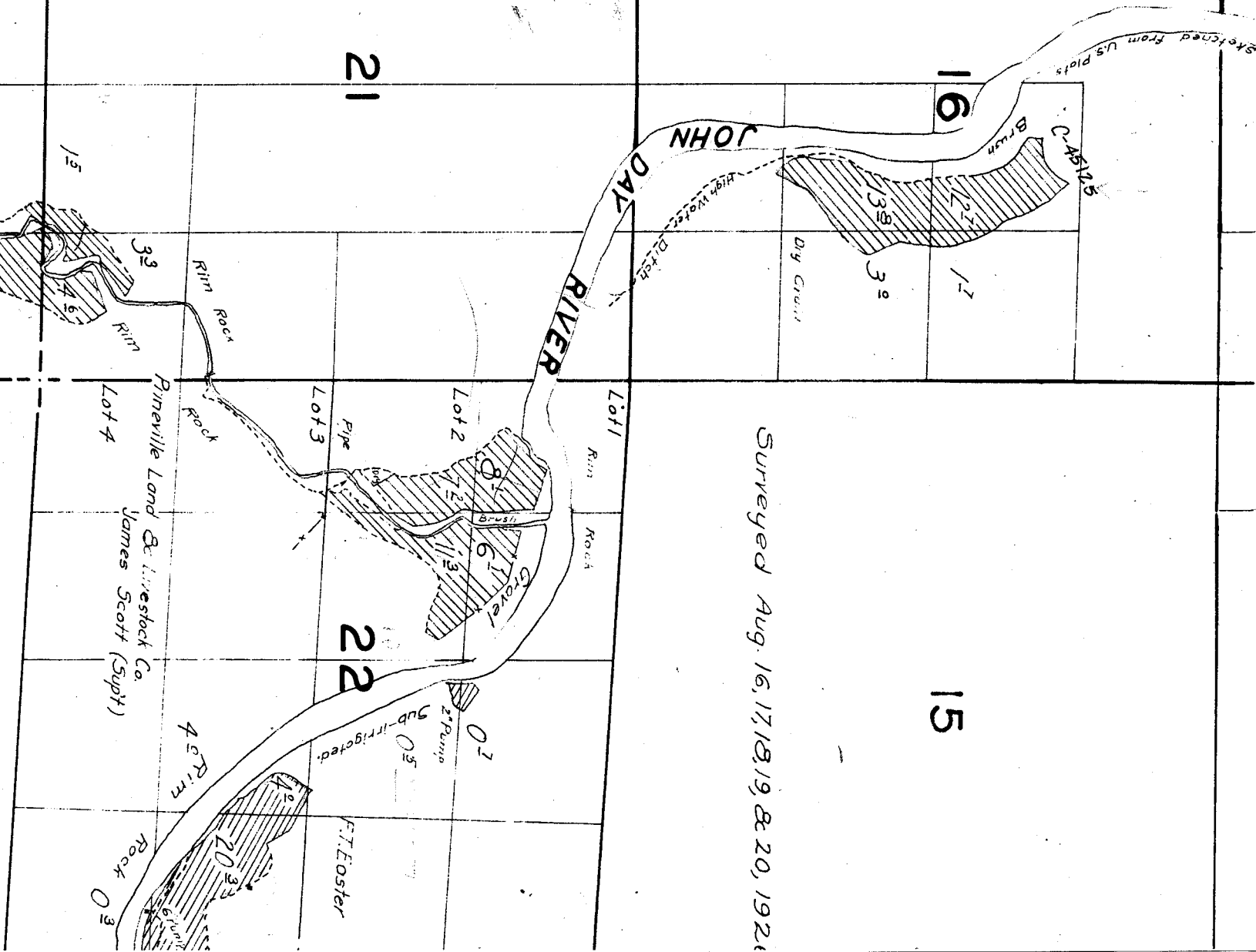
15

20

21

22

Surveyed Aug. 16, 17, 18, 19, & 20, 1920



sketched from U.S. plots

BRUSH

Dug Creek

High Water Ditch

JOHN DAY RIVER

Lot 1

Rim Rock

Lot 2

Grove

Lot 3

Pipe

Rim Rock

Pineville Land & Livestock Co. James Scott (Supt)

Lot 4

4\"/>

Rim Rock

F. Foster

2\"/>

Sub-irrigated

0 5

0 7

20 2 3

0 3

1 5

3 3

Rim

3 2

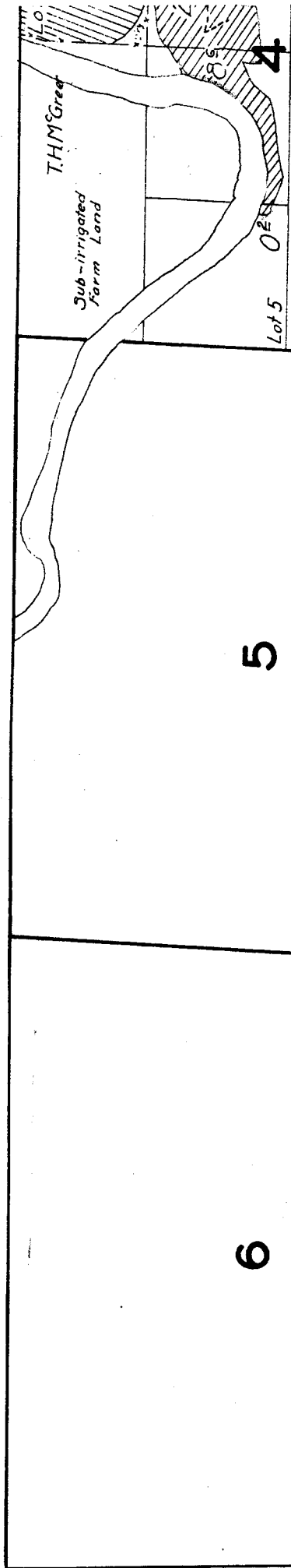
1 7

1 3 9

2 2 1

5 2 1 5 7 2 5

TOWNS



5

6

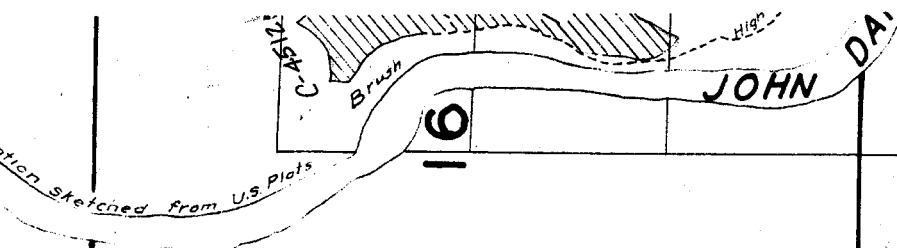
8

7

9

Location of island sketch in field.

Location



16

21

17

20

18

19