

Elmer McQuinn

Lot 4.

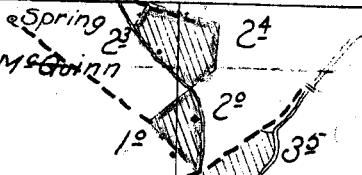
20'

31'

6

5

CREEK



Mrs Elmer McQuinn

Lot 1.

Surveyed October 16, 1925.

Lot 2.

ALDER

04'

7

8

09'

Lot 3.

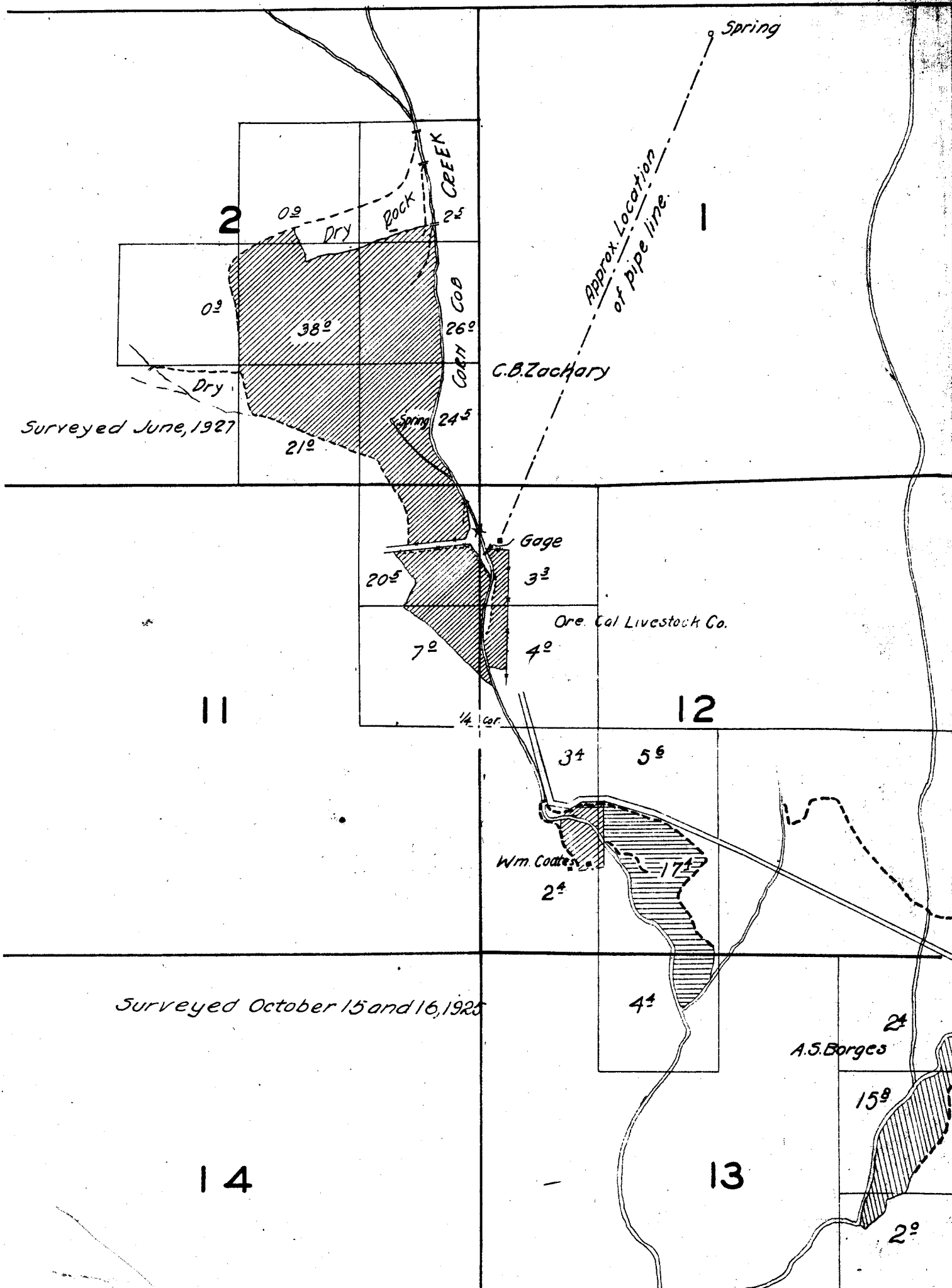
Lot 4.

139'

49'

18

17





Surveyed October 15 and 16, 1922

15

14

22

23

44

13

24

24

Amos Hawk

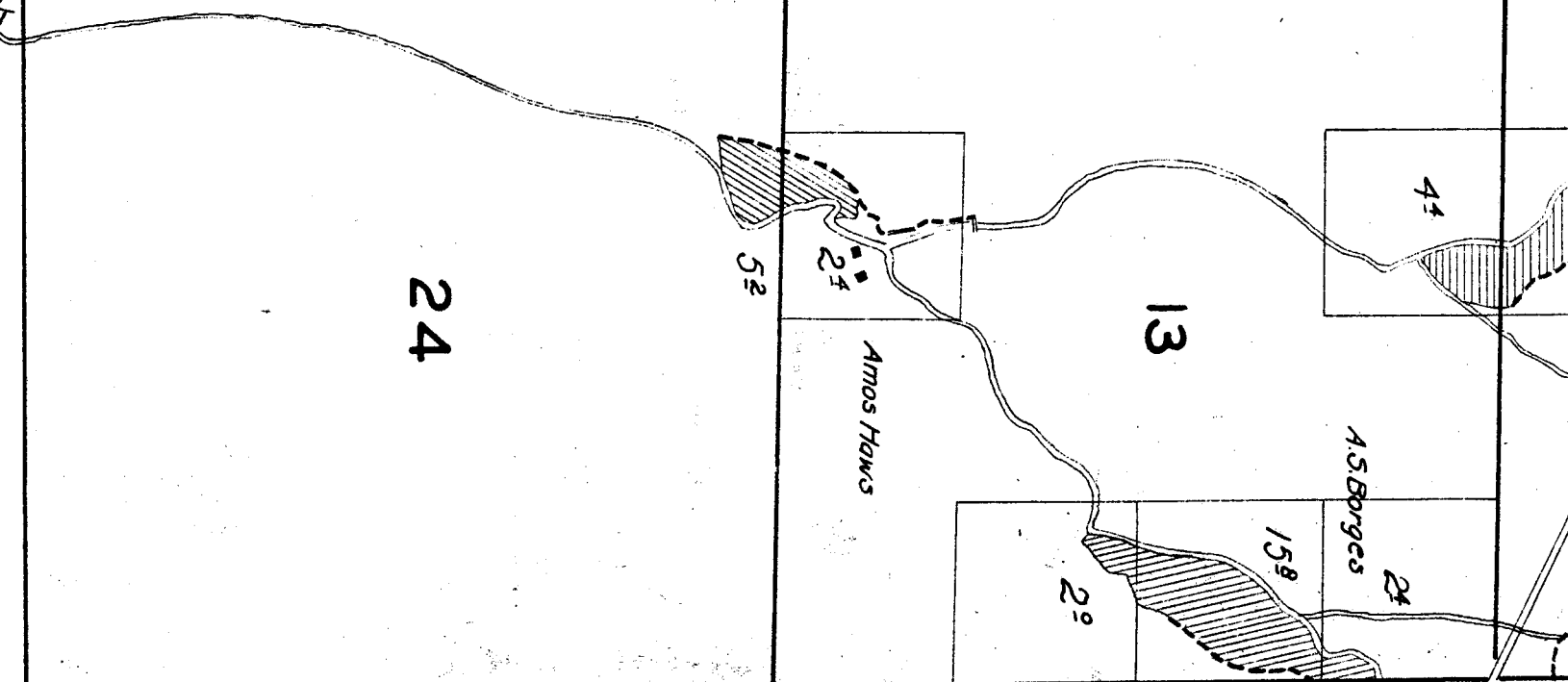
52

A.S. Borges

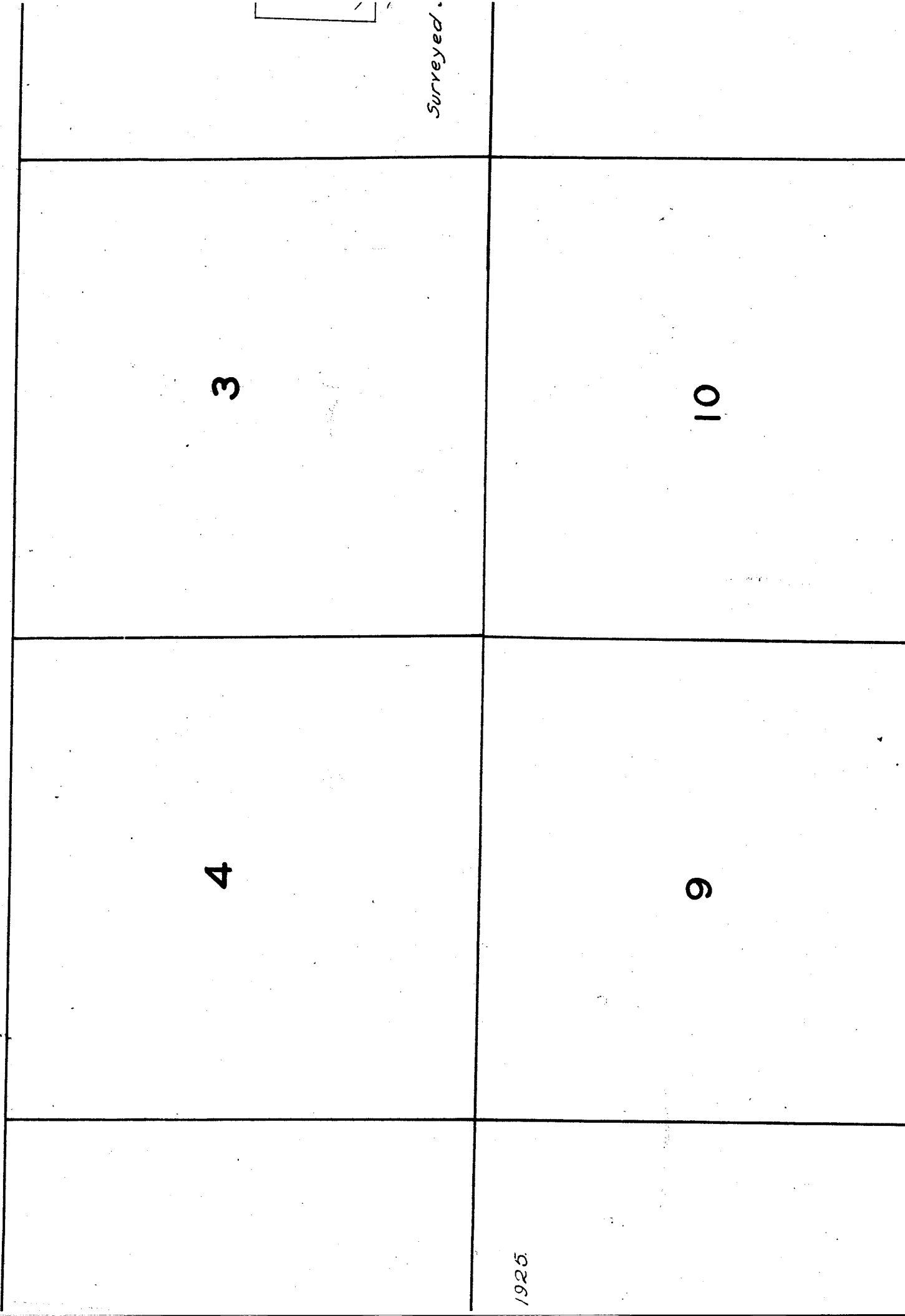
24

159

29



TOWNSHIP 8 S., RANGE 24 E.



3

4

9

10

Surveyed.

1925

50

15

22

16

21

21

22

28

27

*Surveyed Sept. 24 and 30, 1925.*

33

34

*Baughn*

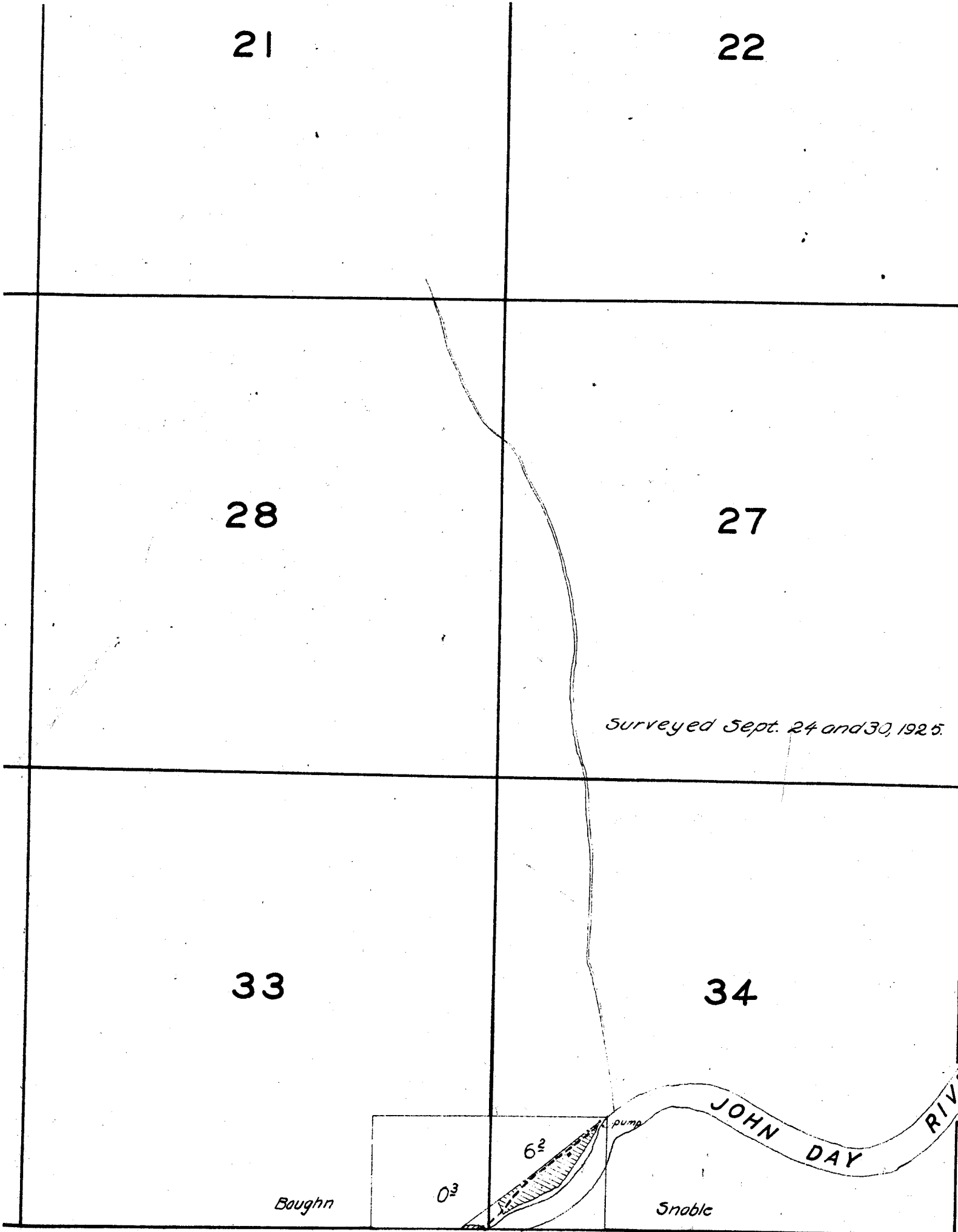
0<sup>3</sup>

6<sup>3</sup>

*pump*

*Snable*

JOHN DAY RIVER



16

21

17

20

18

19



28

29

30

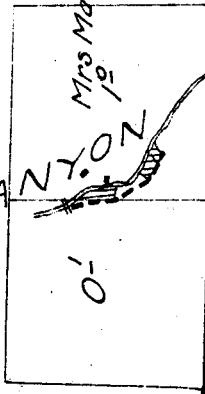
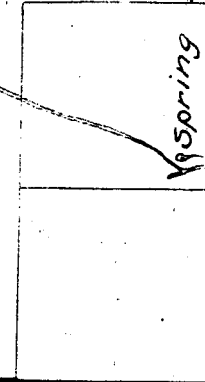
*Note: Streams and Rivers except in the vicinity of irrigated land, sketched in approximate location.*

33

32

MATHIS

Surveyed Oct 29, 1925



Baugh

6