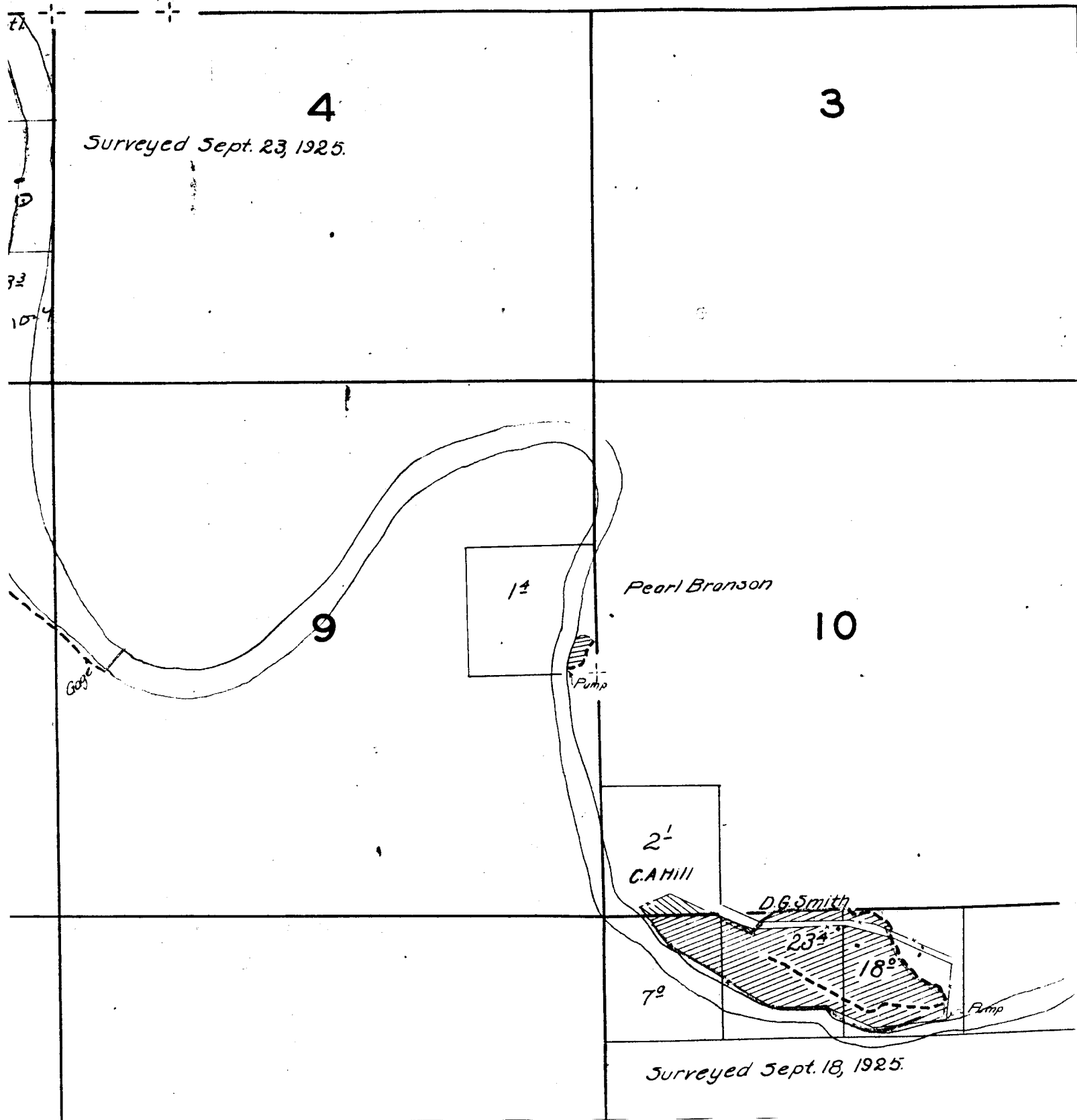
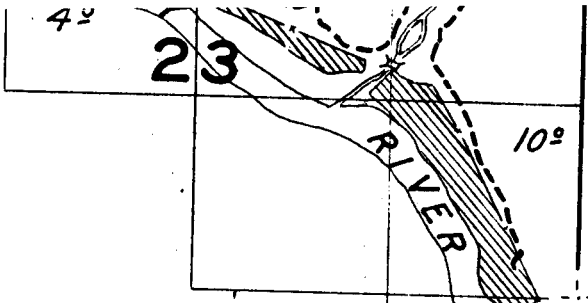


TOWNSHIP 9 S., RANGE 25 E.





24

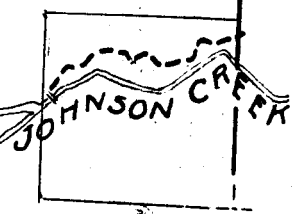
Surveyed Sept. 16, 1925.

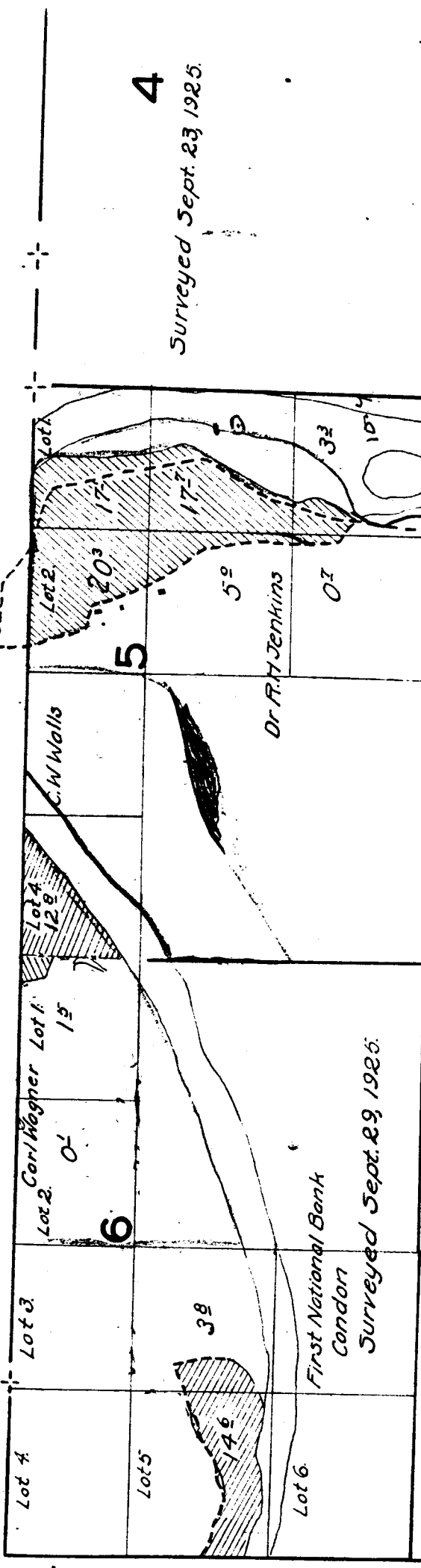
26

25

35

36





Surveyed Sept. 23, 1925.

4

5

6

7

8

9

Creek

18

17

16

19

20

21

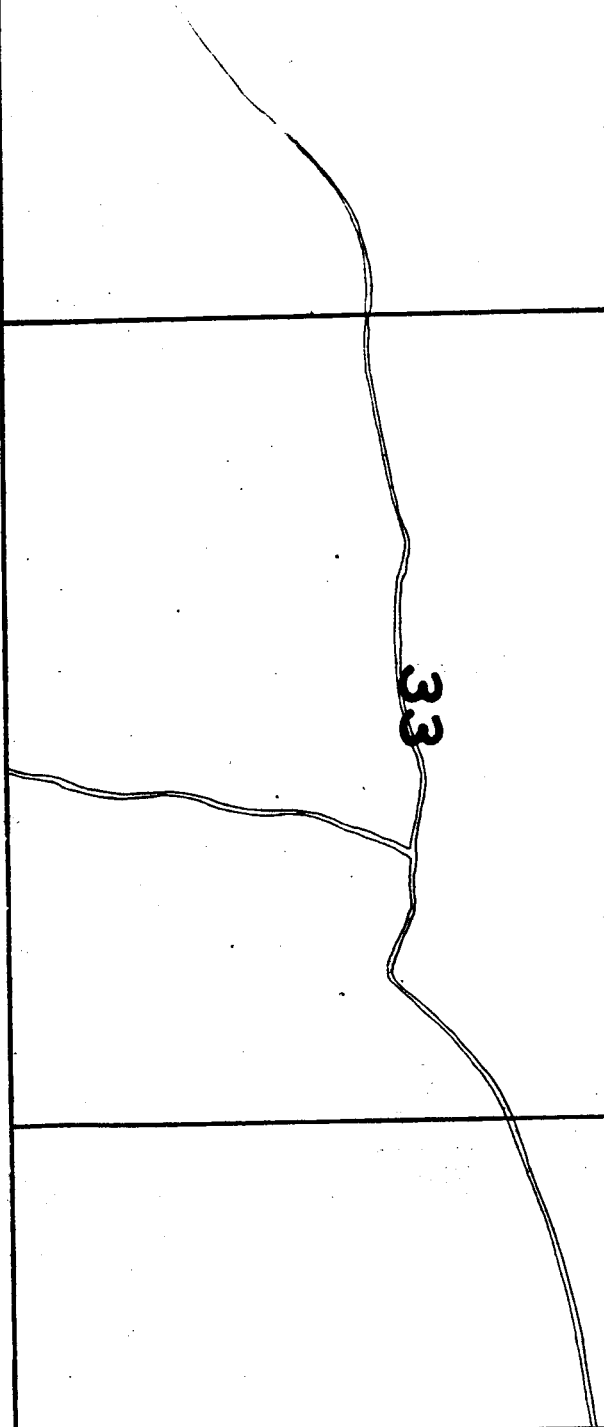
29

Note: The location of streams, except in the vicinity of irrigated land, is sketched in approximate location.

28

32

33



17

16

20

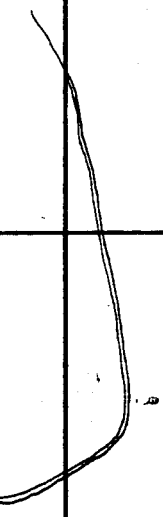
21

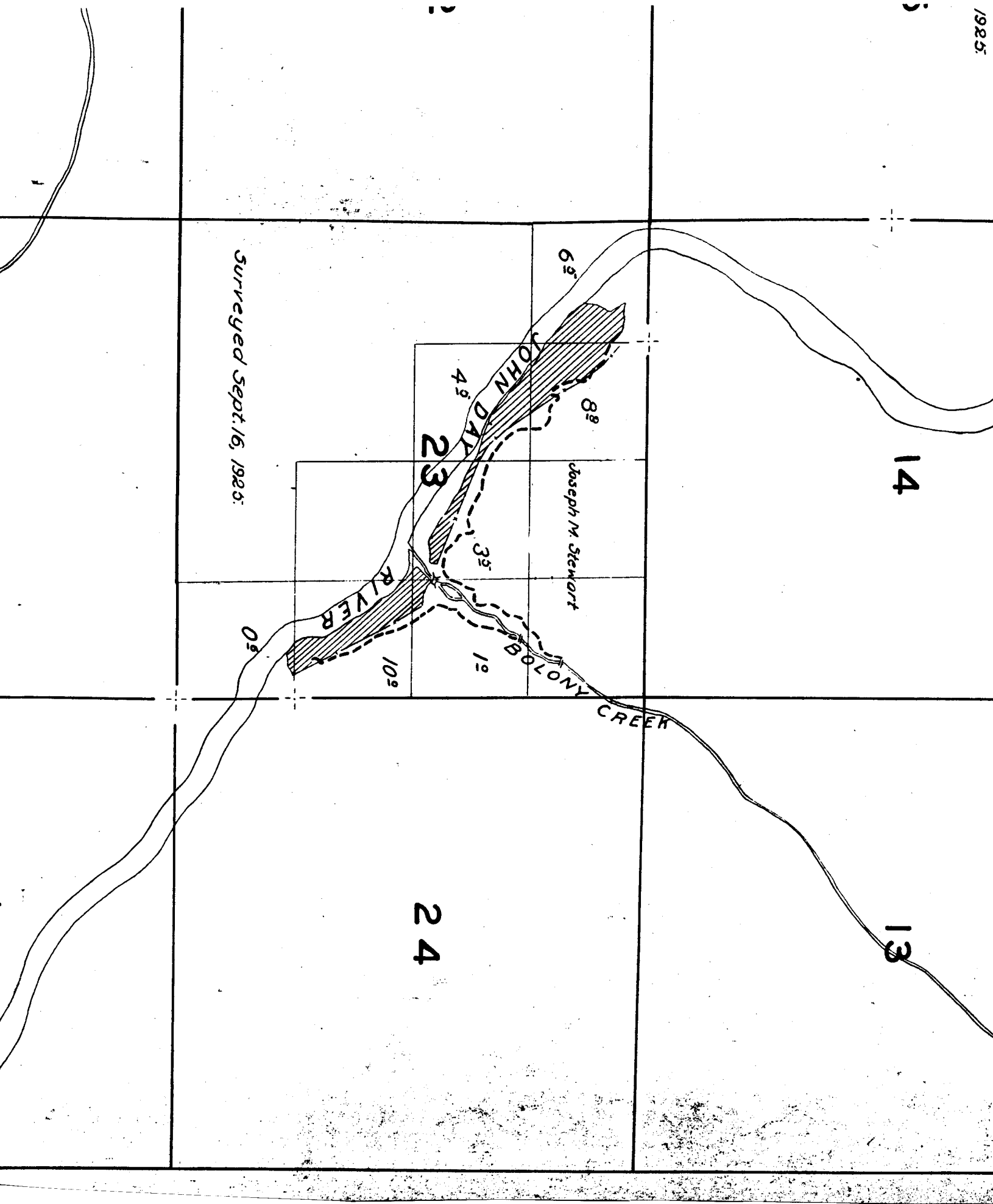
Surveyed Sept

79

D.S.

23





Surveyed Sept. 16, 1925

6^s

8^s

4^s

23

Joseph M. Stewart

3^s

10^s

1^s

0^s

14

13

24

JOHN DAY

RIVER

BOLONY CREEK

3

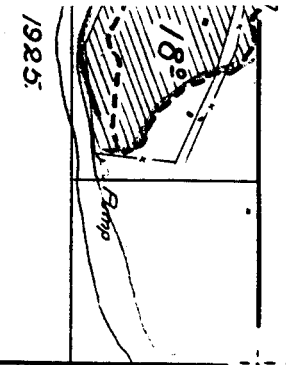
2

1

0

11

12



1925

19

20

30

29

Note: The location of streams, except in the vicinity of irrigated land, is sketched in approximate location.

31

32

