

2

1

11

12

14

13

27

25

26

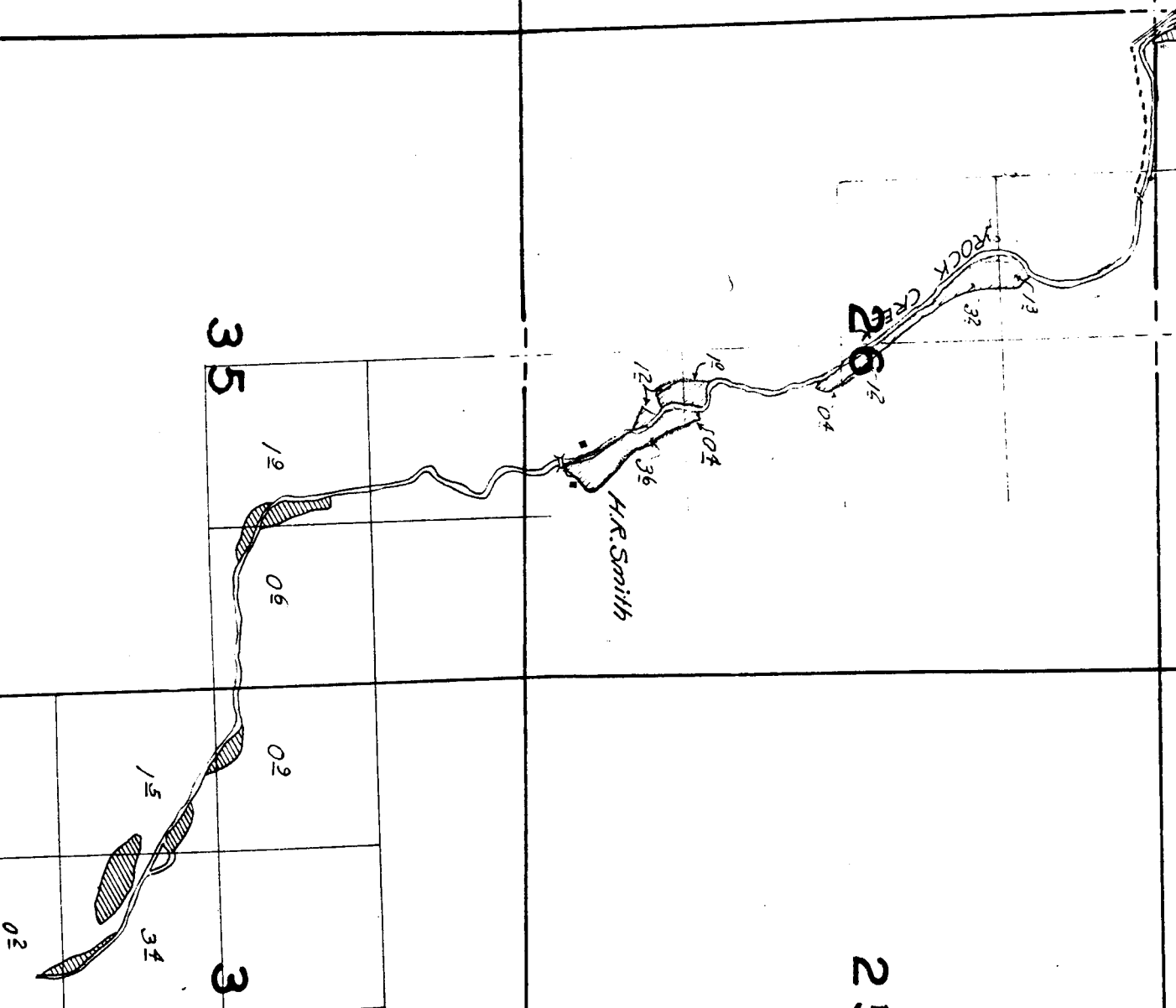
34

35

36

H.R. Smith

Willist E. Burton
Surveyed June, 1927.



BROWN
(BROWN)

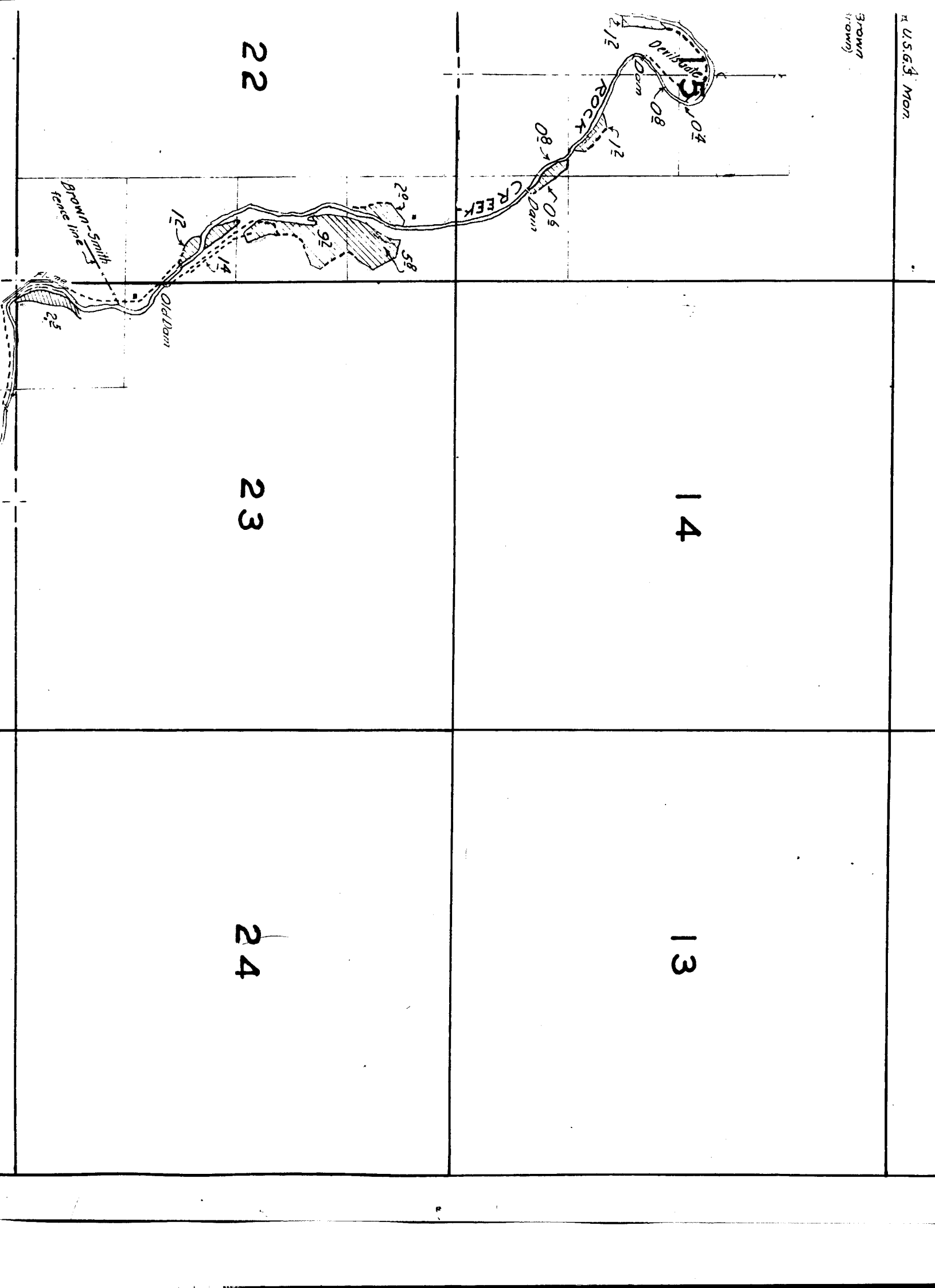
22

14

13

23

24



30

29

28

31

32

33

18

16

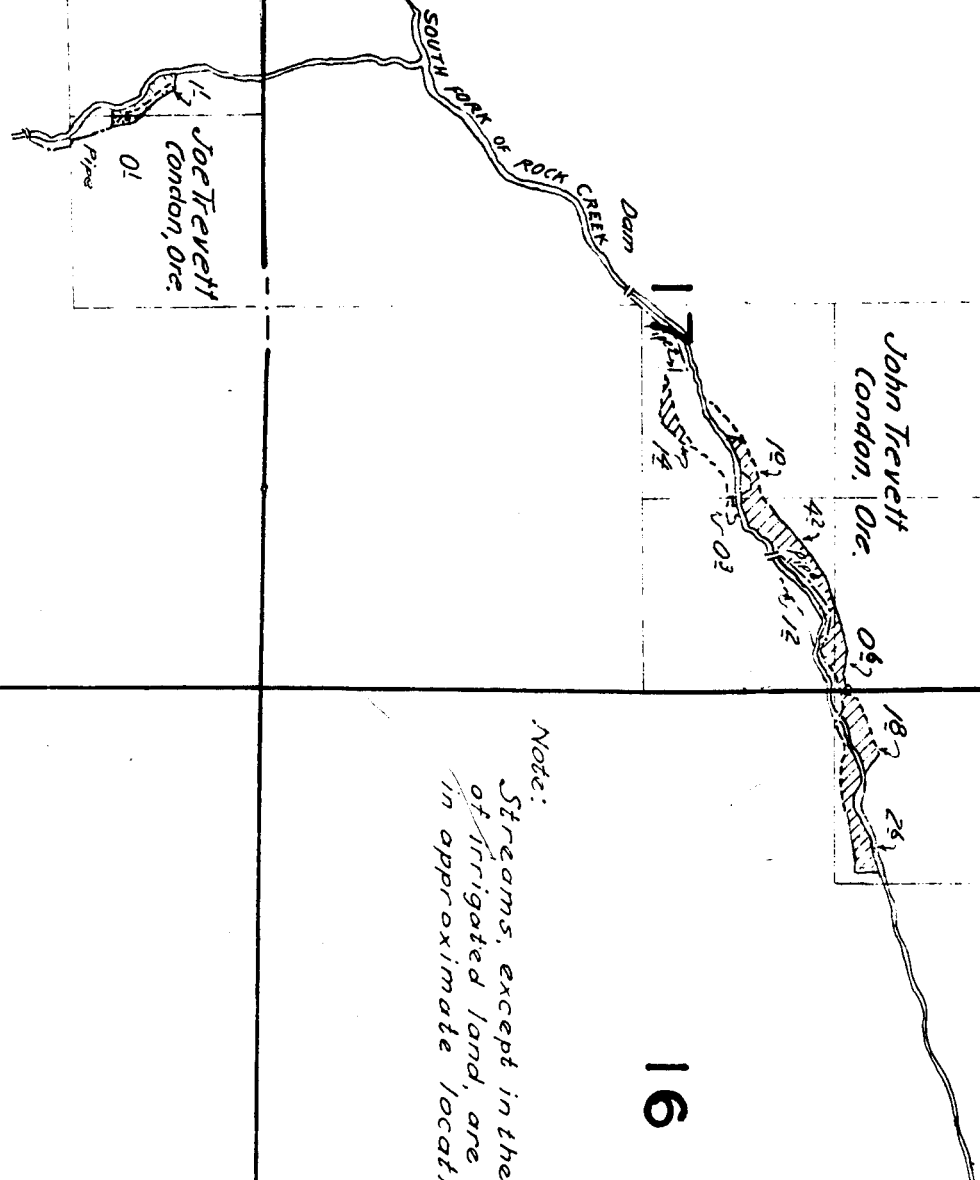
19

20

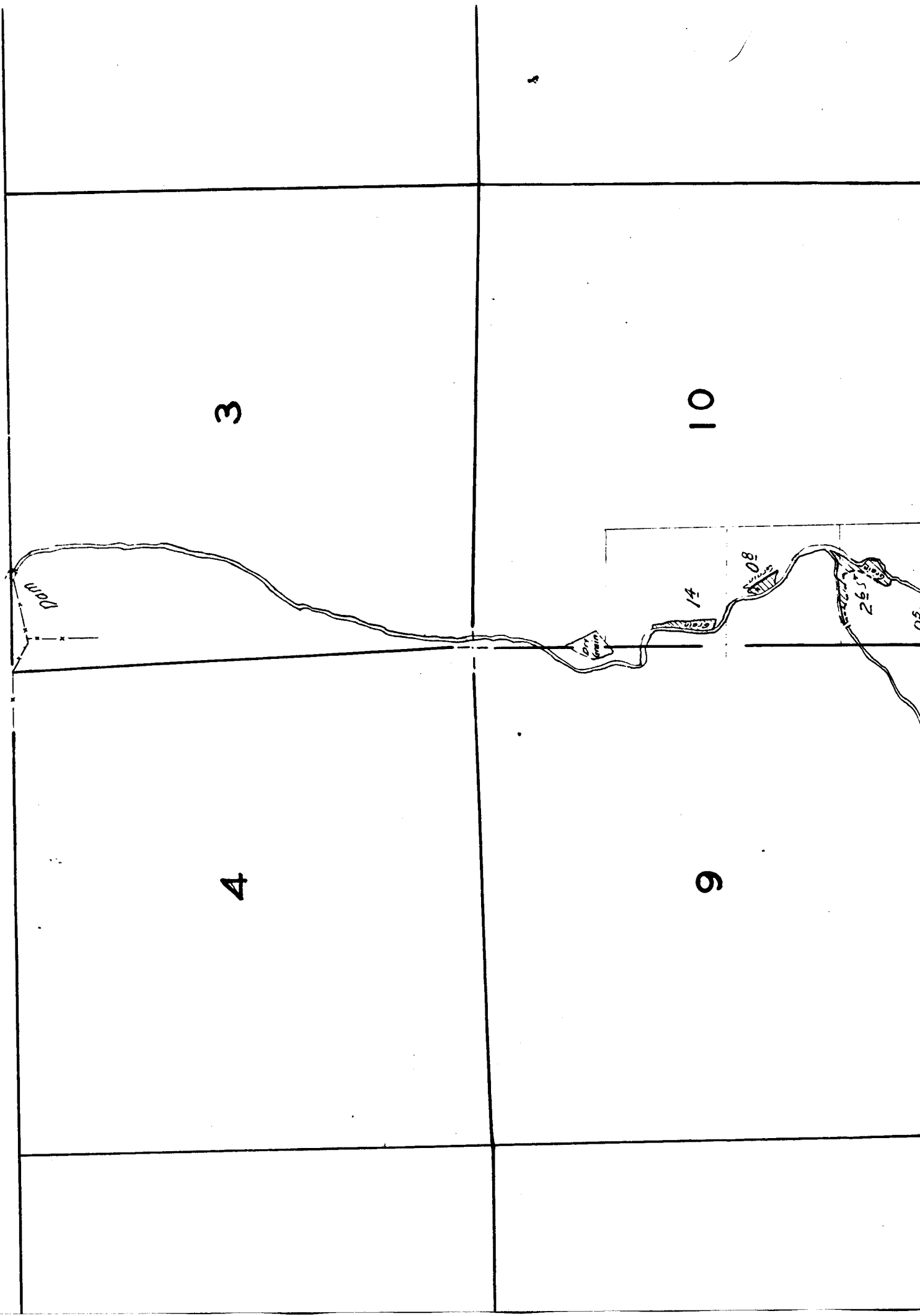
21

Note:
Streams, except in the
of irrigated land, are
in approximate locati

Surveyed May 12 and 13



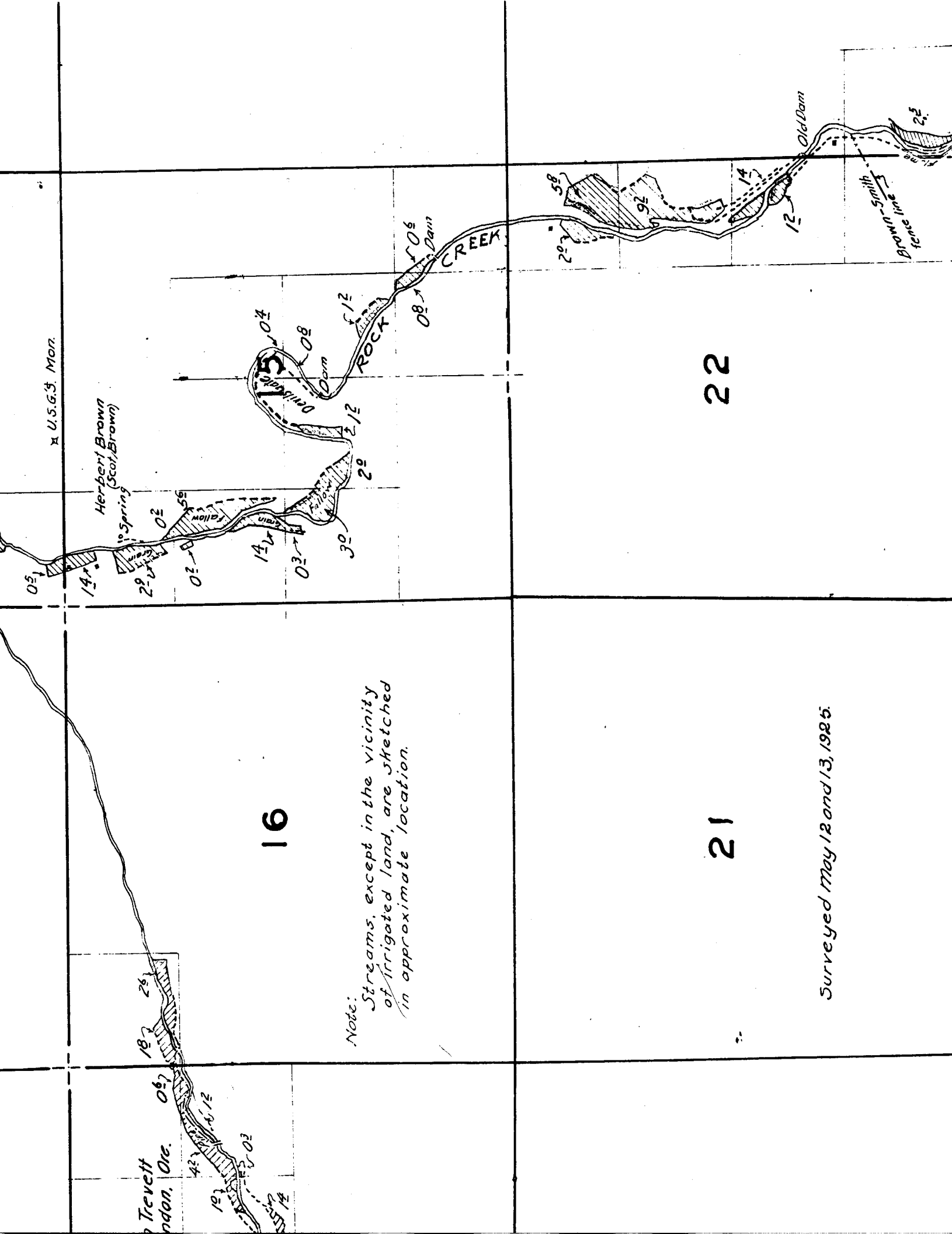
TOWNSHIP 3 S., RANGE 22 E..



U.S.G.S. Mon.

Herbert Brown
(Scot Brown)

Trevett
ndon, Ore.



16

Note:
Streams, except in the vicinity
of irrigated land, are sketched
in approximate location.

22

21

Surveyed May 12 and 13, 1925.

21

Surveyed May 12 and 13, 1925.

22



*Brown-Smith
fence line*

28

27

33

34

6

5

7

8

18

John Trevett
Condon, Ore.

