

19

20

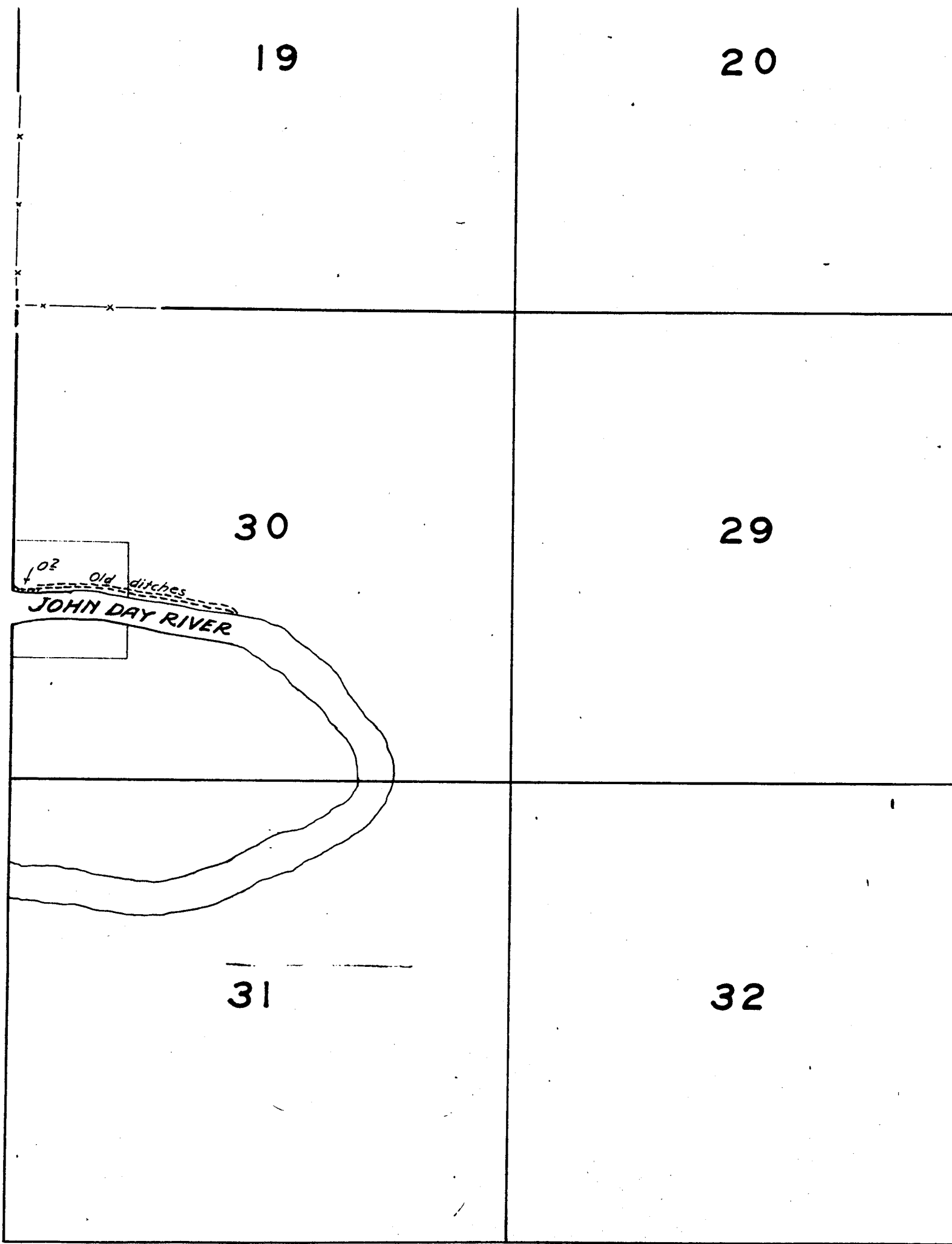
30

29

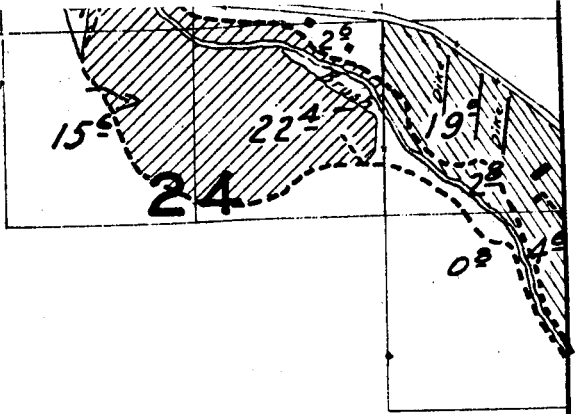
02
old ditches
JOHN DAY RIVER

31

32



23



26

25



35

36

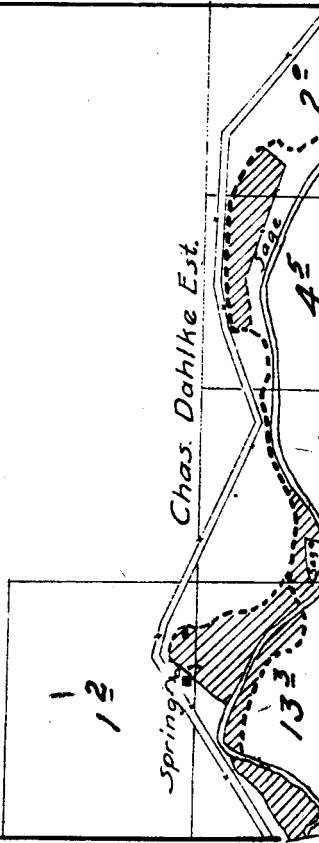
TOWNS

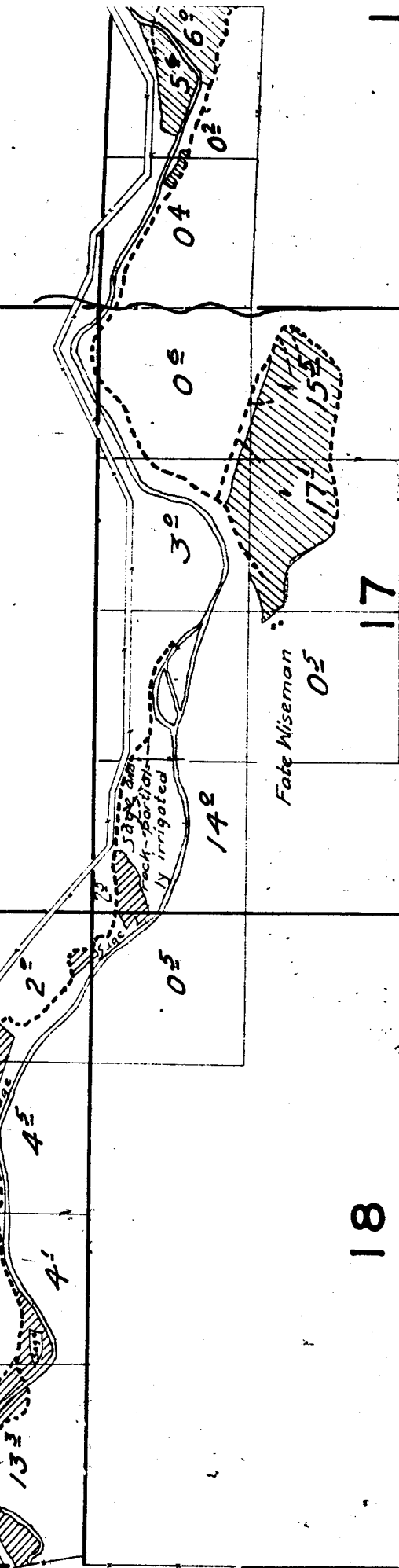
5

8

6

7





Surveyed April.

Note:
Streams and roads
the vicinity of
are sketched in
location.

18

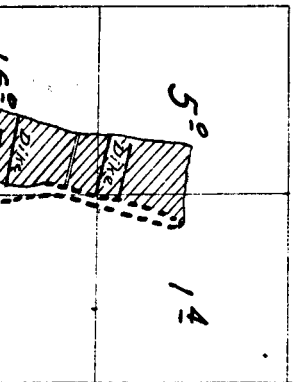
17

19

20

2

3	2	1
10	11	12



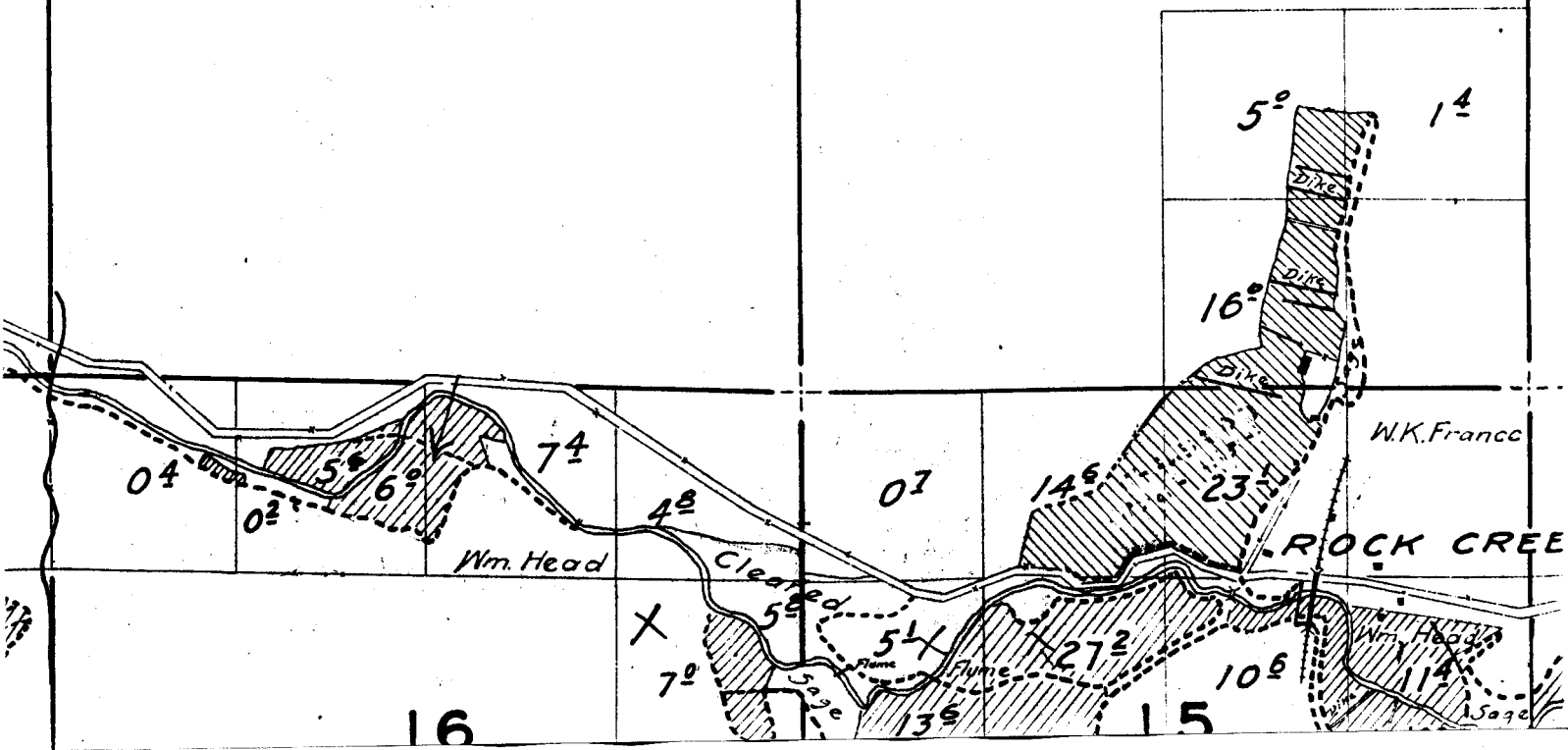
TOWNSHIP 1 N., RANGE 20 E

4

3

9

10



28

27

33

34

TOWNSHIP 1 N., RANGE 21 E.

4

3

9

10

16

15

23

24

26

25

35

36

15

14

13

22

23

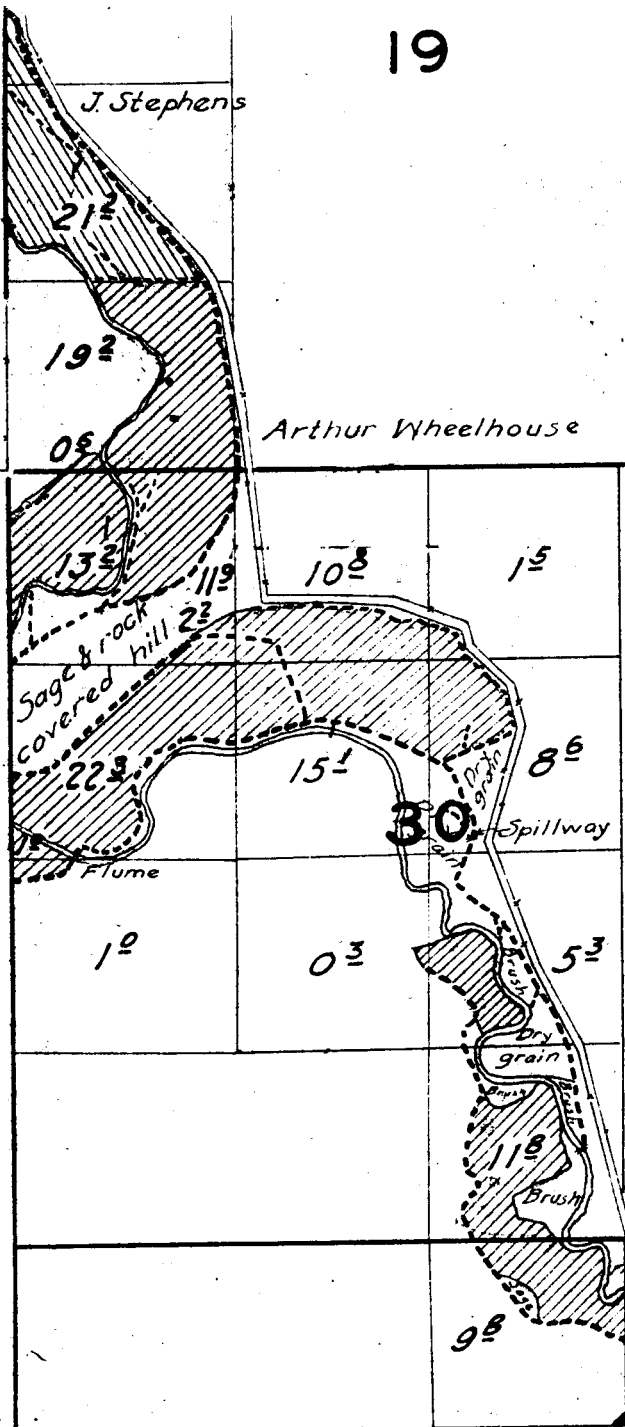
24

3	2	1
10	11	12

19

20

J. Stephens



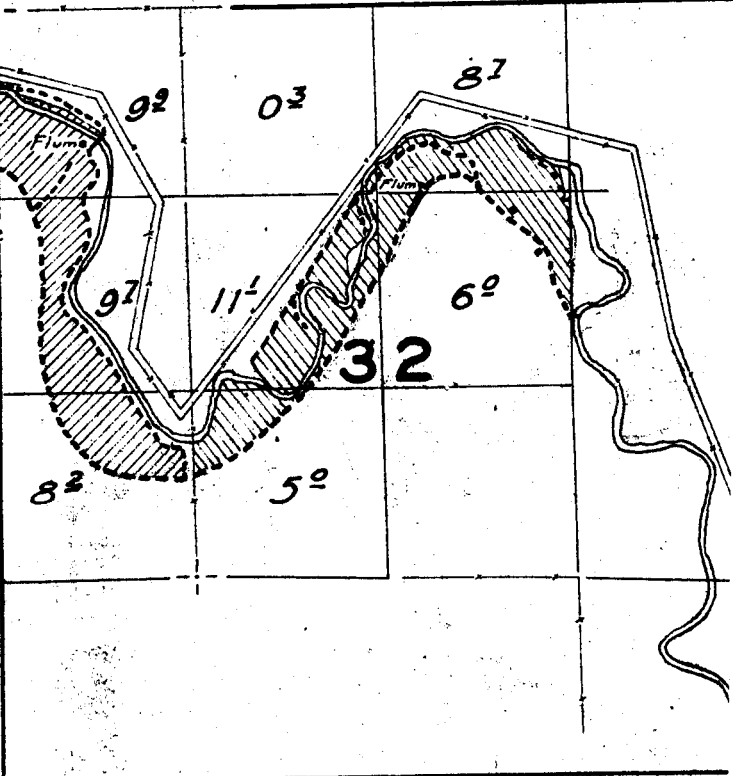
29

Note:

Streams and roads, except in the vicinity of irrigated land, are sketched in approximate location.

31

Arthur Wheelhouse



17

16

15

20

21

22

29

*roads, except in
of irrigated land,
d in approximate*

28

27

Surveyed April 28 and 29, 1925.

32

187

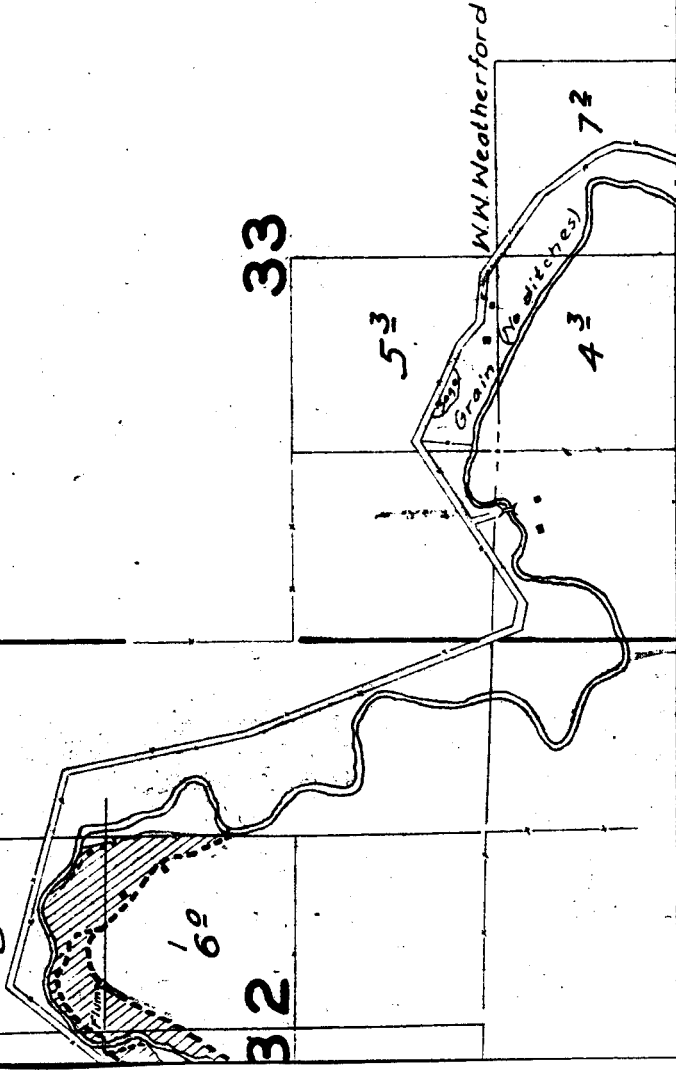
160

33

53

43

73



TOWNSHIP

		6
4	5	7

4

9

5

8

6

7

16

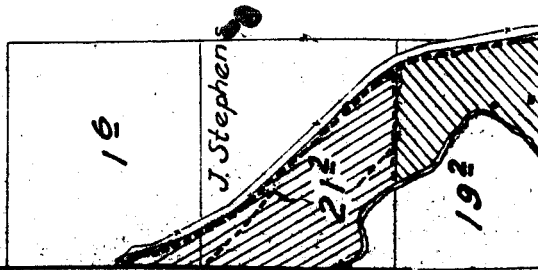
17

18

21

20

19



16

17

18

21

20

19

