

16

21

17

20

18

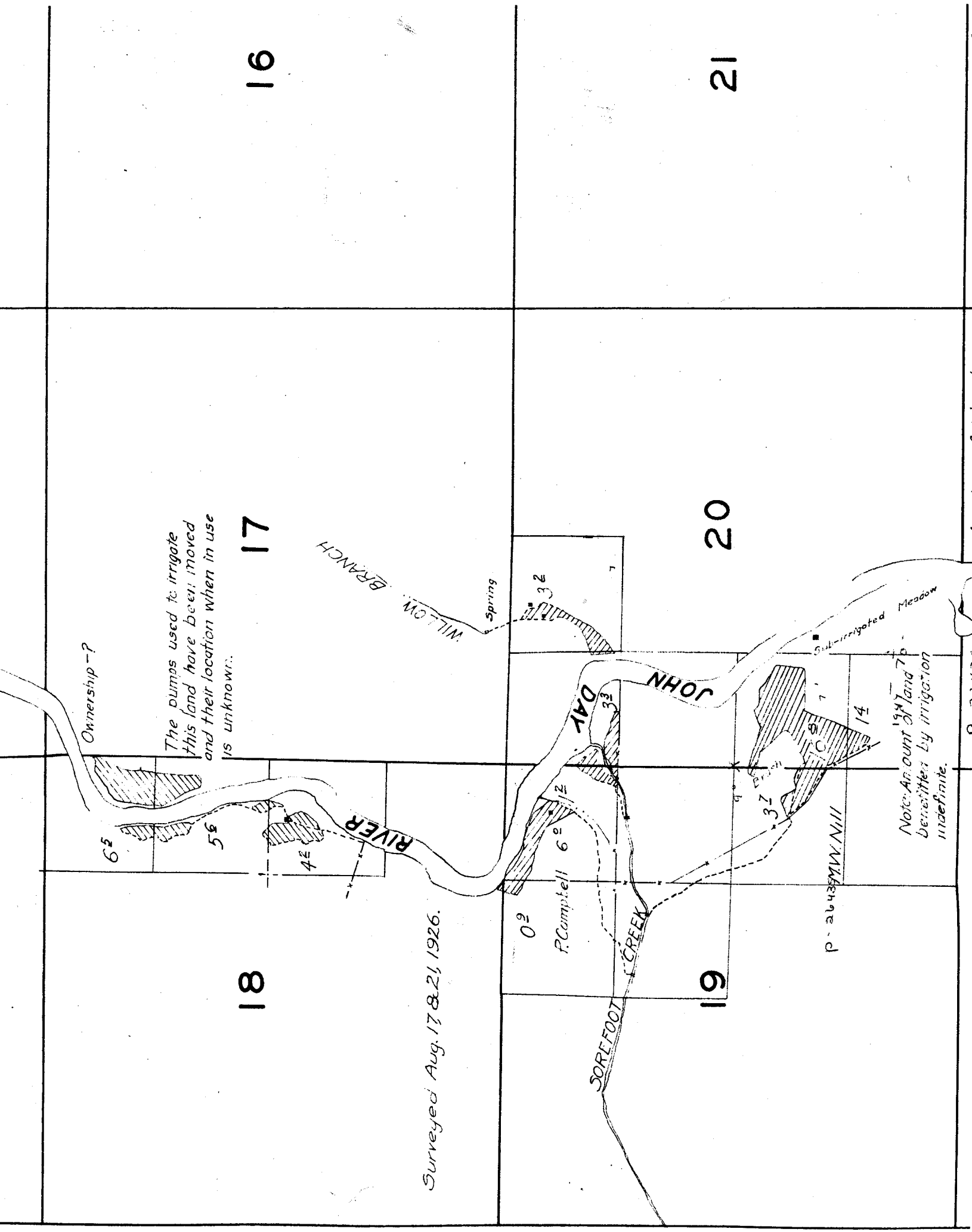
19

Ownership - ?

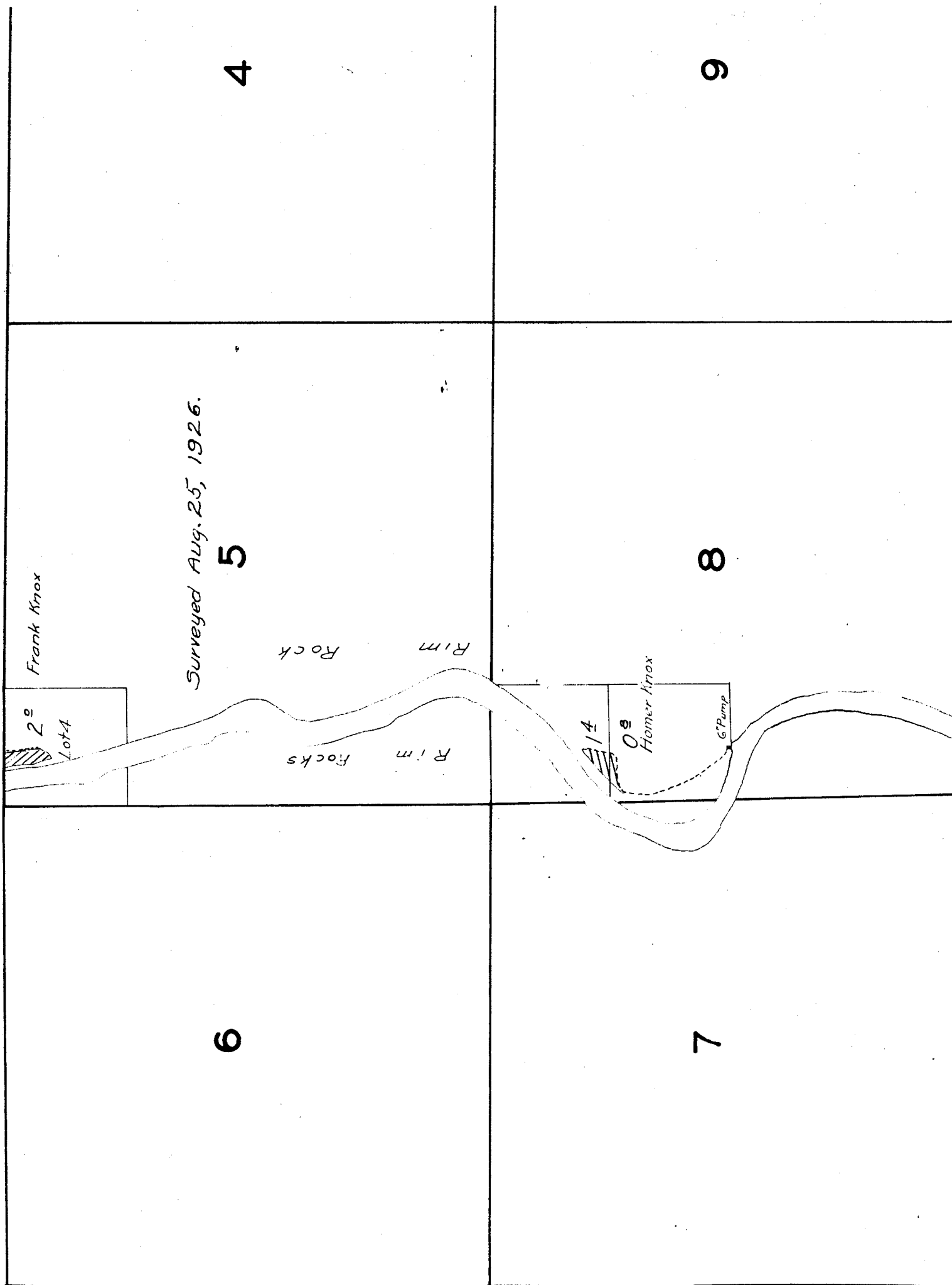
The pumps used to irrigate this land have been moved and their location when in use is unknown.

Surveyed Aug. 17 & 21, 1926.

Note: Amount of land to be benefited by irrigation indefinite.



TOWNSHIP



3	2	1
10	11	12

15

14

13

22

23

24

nd river, except in the
ted land, sketched in
tion.

15

16

22

21

NOTE: Streams and river, except in the vicinity of irrigated land, sketched in approximate location.

on of island
rd in field.

28

27

ted Meadows

1 2
Charles Chapman
2nd Pump
10¹

Surveyed

Surveyed Aug. 17, 1926.

33

34

Charles Hilton
(Charles Burgess)

County

PINE

Spring

10²

Feas

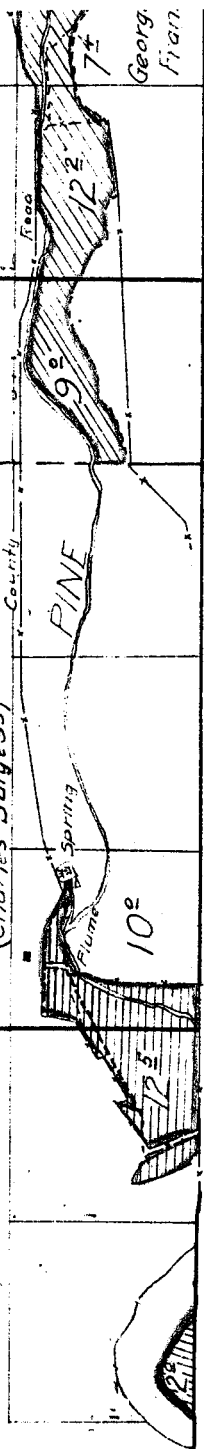
12²

12⁵

10²

Georg
Frian

igated
and



23

24

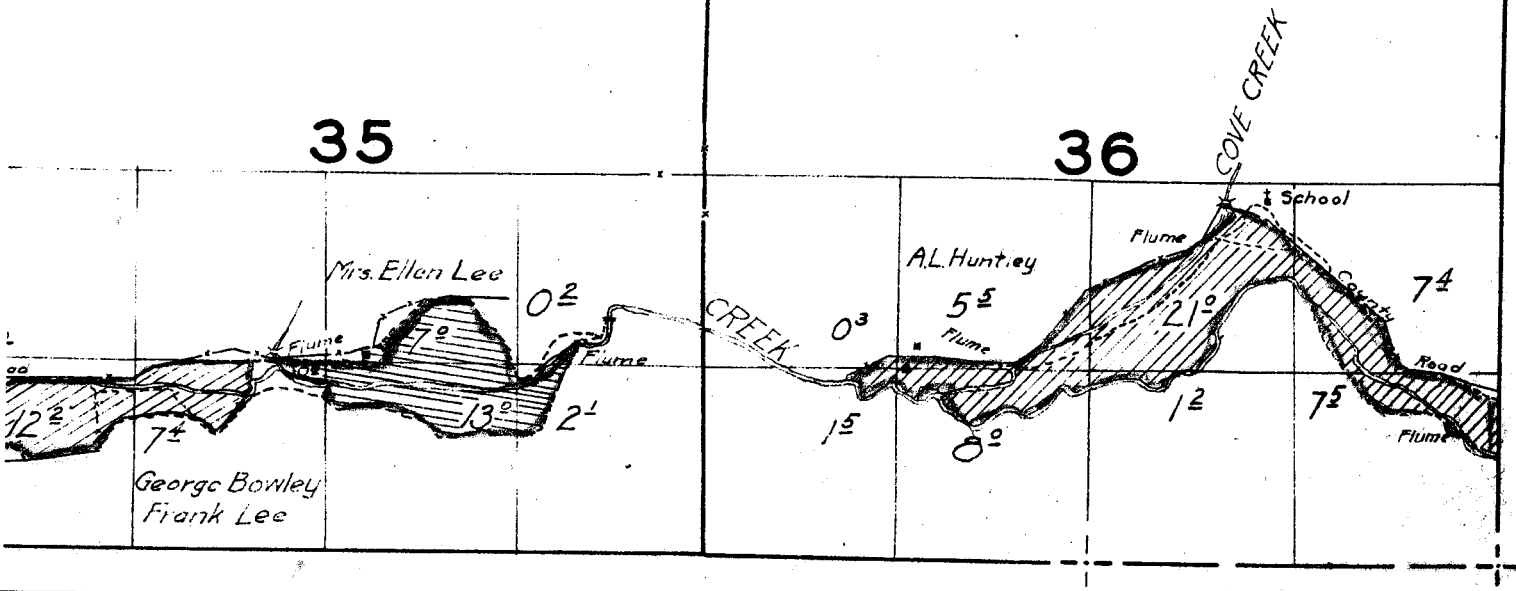
26

25

Surveyed Aug. 14, & 16, 1926.

35

36



19

20

M.W. Nill

Note: Amount of land benefited by irrigation indefinite.

Brush & Gravel

Location of island sketched in field.

30

29

L.V. Tillatson
M.W. Nill

Charles Chap

31

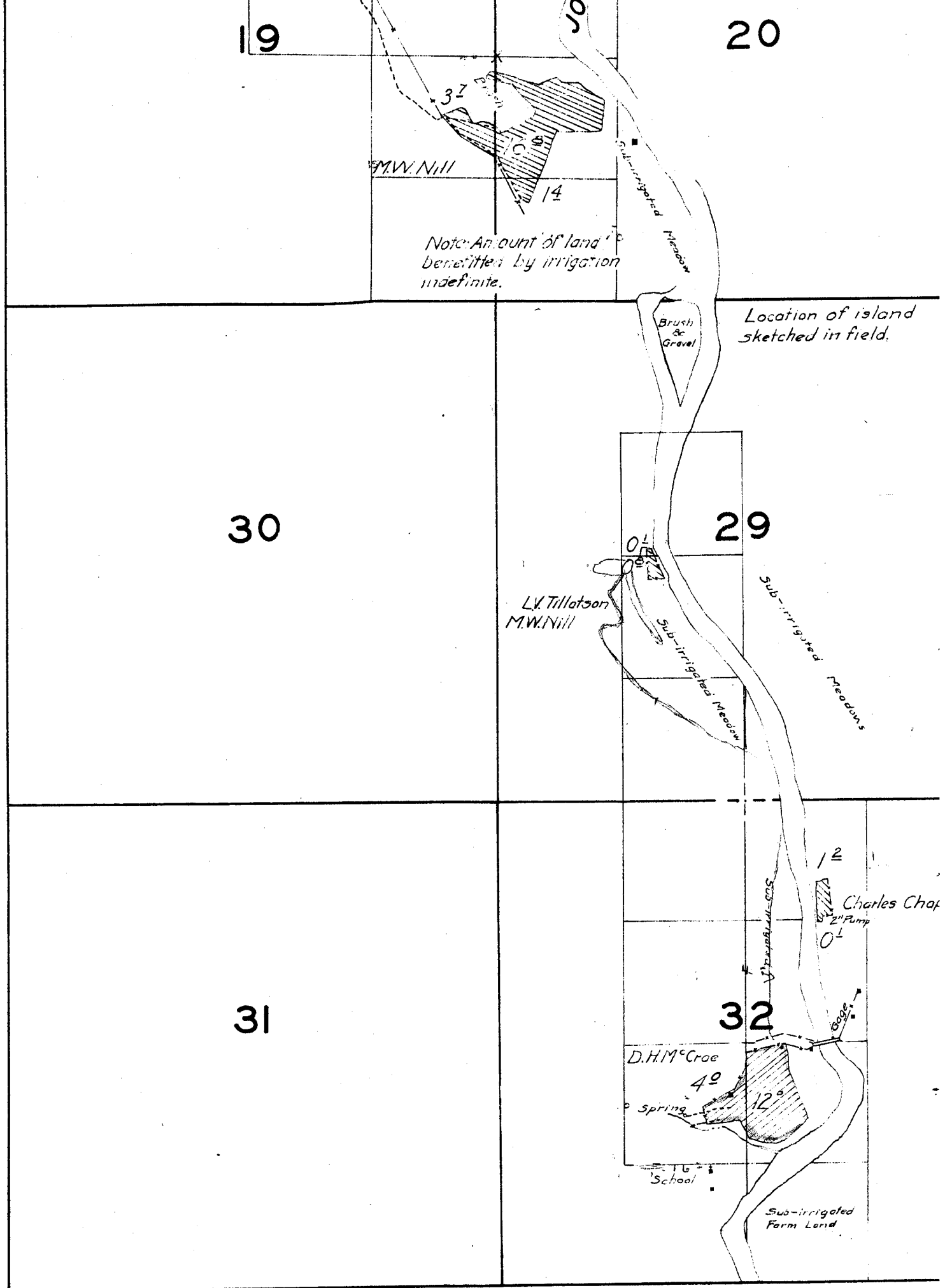
32

D.H.M. Crae

Spring

School

Sub-irrigated Farm Land



TOWNSHIP 7 S., RANGE 19 E.

4

3

9

10