

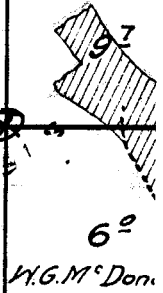
OWNSHIP 1 N., RANGE 19 E.

4

3

9

10



28

27

33

34

16

15

*Note:
Streams and roads, except in the
vicinity of irrigated land, are
sketched in approximate location*

21

22

TOWNSHIP

| | |
|---|---|
| 6 | 5 |
| 7 | 8 |

| |
|---|
| 4 |
|---|

| |
|---|
| 9 |
|---|

18

17

16

19

20

21

23

24

Surveyed May 19, 1925.

12

JOHN DAY RIVER

ditch partly filled with dirt

14

14

69

26

25

34

76

Pump Dam Mind Mill & Pump

35

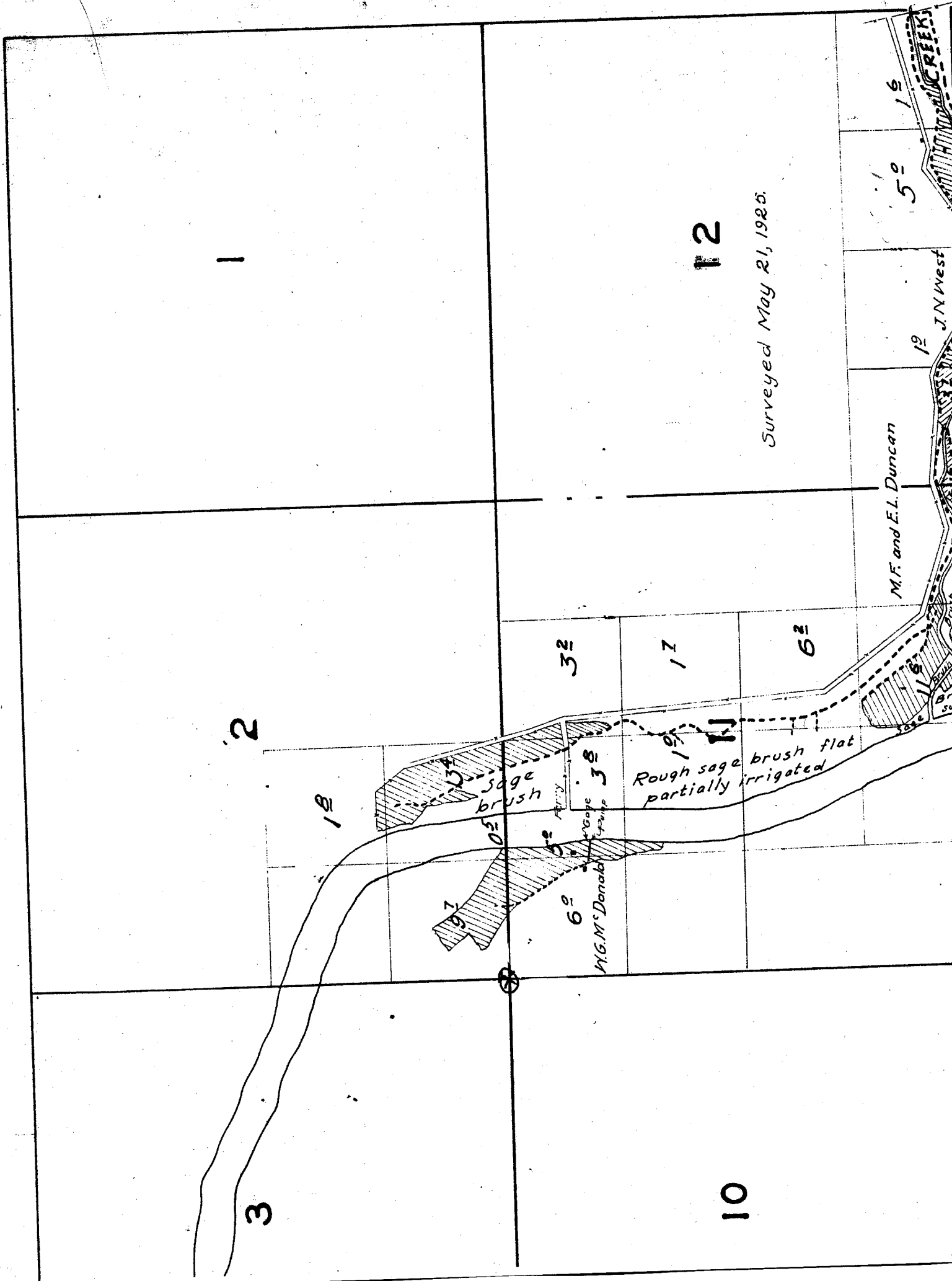
36

Surveyed May 14, 1925.

JOHN DAY RIVER
Sage 18
Thos. Brady
BIRD ROCK
Flume
116
115
114
113
112
111
110
109
108
107
106
105
104
103
102
101
100
99
98
97
96
95
94
93
92
91
90
89
88
87
86
85
84
83
82
81
80
79
78
77
76
75
74
73
72
71
70
69
68
67
66
65
64
63
62
61
60
59
58
57
56
55
54
53
52
51
50
49
48
47
46
45
44
43
42
41
40
39
38
37
36
35
34
33
32
31
30
29
28
27
26
25
24
23
22
21
20
19
18
17
16
15
14
13
12
11
10
9
8
7
6
5
4
3
2
1

NGE 19 E.

3-2-1



1

2

3

19

7

sage brush

6

3

M.G. Mc Donnell

3

Rough sage brush flat partially irrigated

7

12

10

6

Surveyed May 21, 1925.

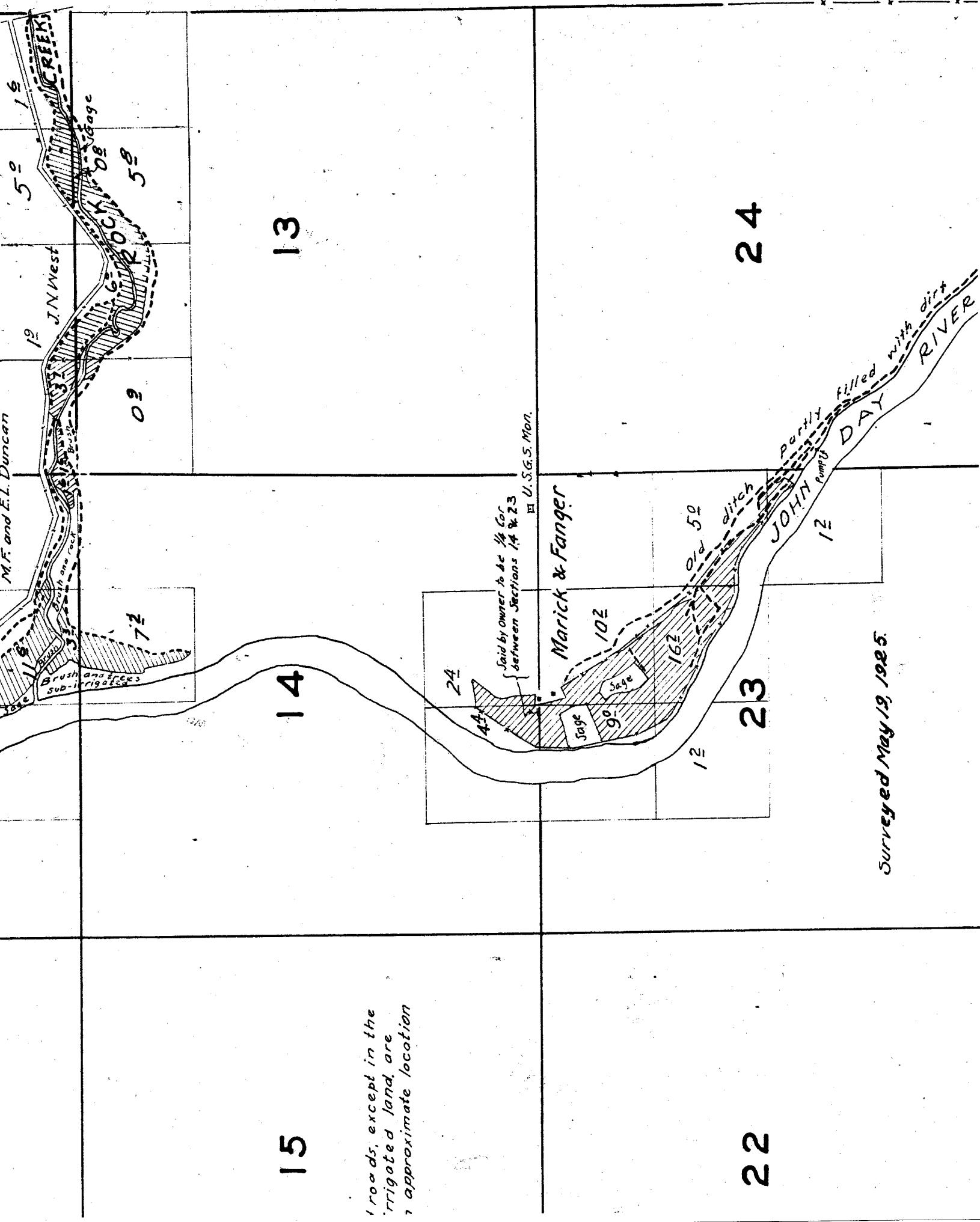
M.F. and E.L. Duncan

J.N. West

19

5

CREEK



Roads, except in the irrigated land, are approximate location

Surveyed May 19, 1925.

19

20

30

29

31

32