

LYNN LONG PROPERTY

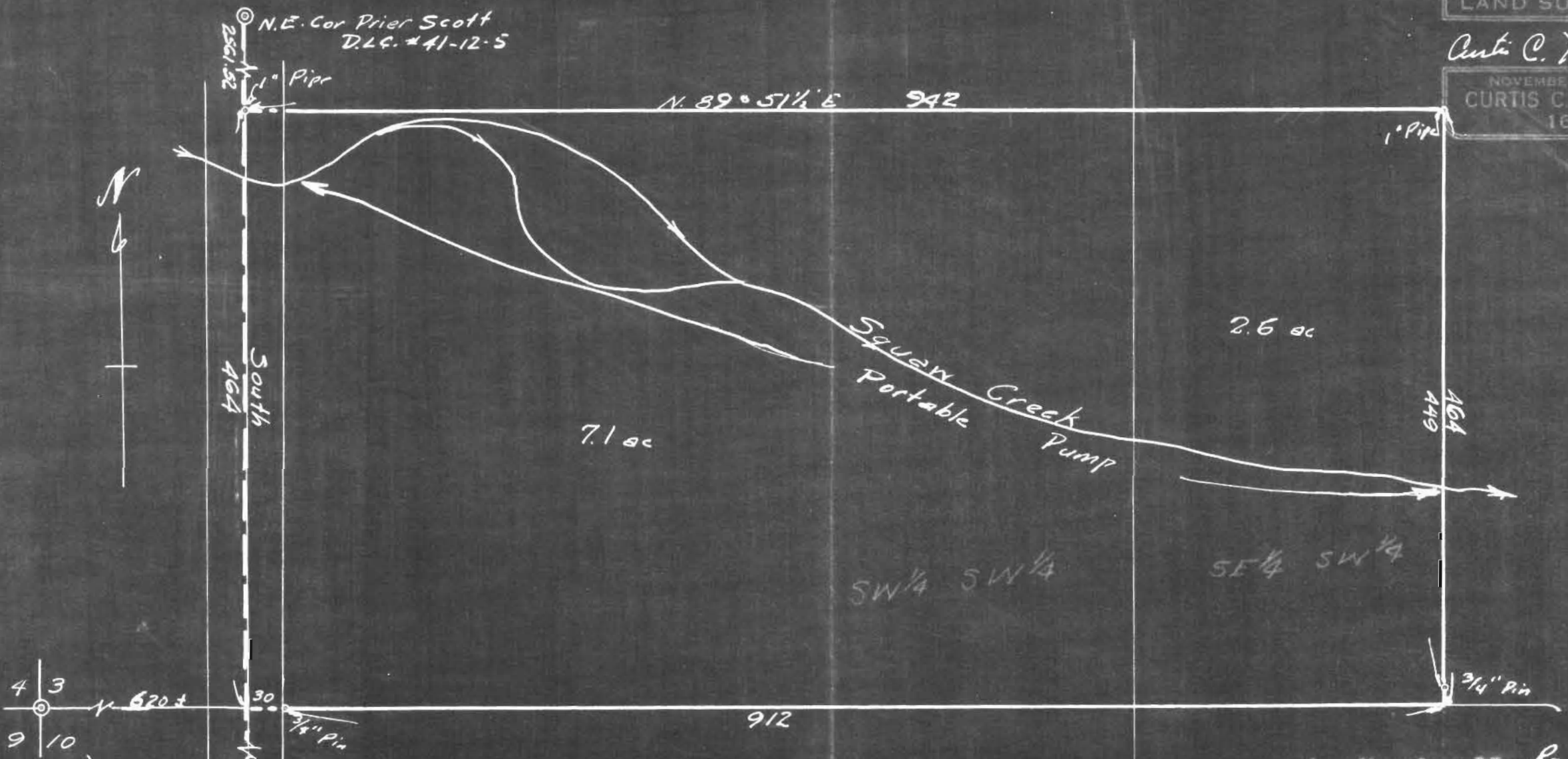
in

James A. Bennett D.L.C. No. 45, Twp. 12 S., R. 5 W., W. M.

I, Curtis C. Hanson, County Surveyor of Benton County, Oregon, hereby certify that this plat was made on October 22, 1952, from maps on file in my office and from County Assessor's aerial photographs and that monuments are shown hereon as indicated on said maps.

REGISTERED
OREGON
LAND SURVEYOR

Curtis C. Hanson
NOVEMBER 9 1943
CURTIS C. HANSON
161



Application No. R-27814