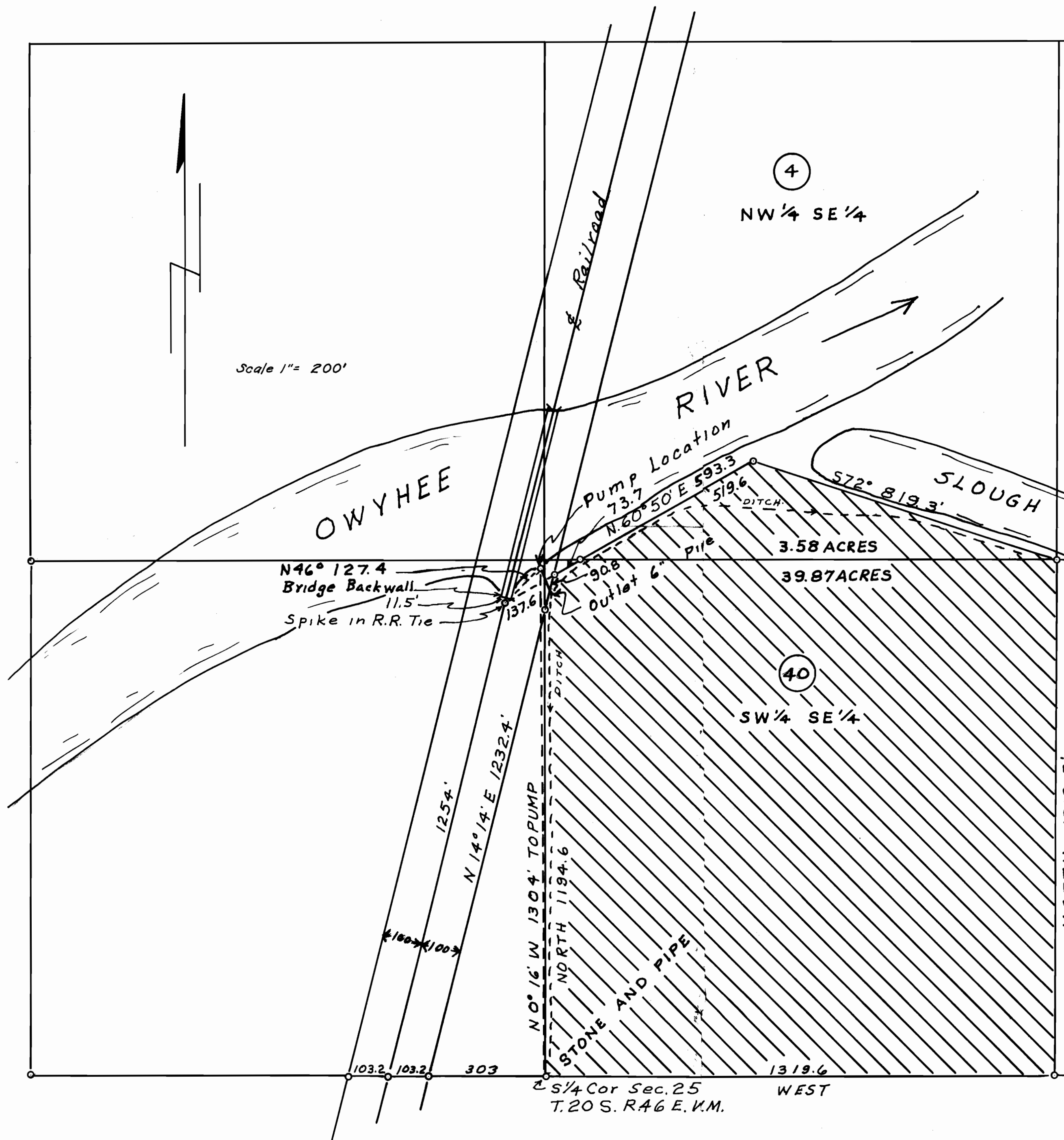


Map of part of Section 25 T20S. R46E. W.M.

To accompany application for the appropriation of water from Owyhee River to be used for irrigation on part of the  $W\frac{1}{2}$  of the  $SE\frac{1}{4}$  of section 25 T20S. R46E. W.M.



Scale 1" = 200'

ENGINEER'S CERTIFICATE  
 I, Melvin V. Davenport, a Registered Professional Engineer of Caldwell, Idaho, do hereby certify that this map was made from notes taken during actual surveys made by me on Nov. 18, 1952, Dec. 10, 1952 and July 12, 1957; that the monument at the  $S\frac{1}{4}$  Corner of Section 25 T20S. R46E. W.M. is a 16" sandstone with an "x" cut in the top, set on end 3" below the surface with a  $\frac{3}{4}$ " pipe set 3" below the surface a.2' East of the stone.



Note: Shaded area to be irrigated.

S.E. Cor. Sec. 25  
 T.20 S. R.46 E. W.M.

Application No. 32097  
 Permit No. 25362