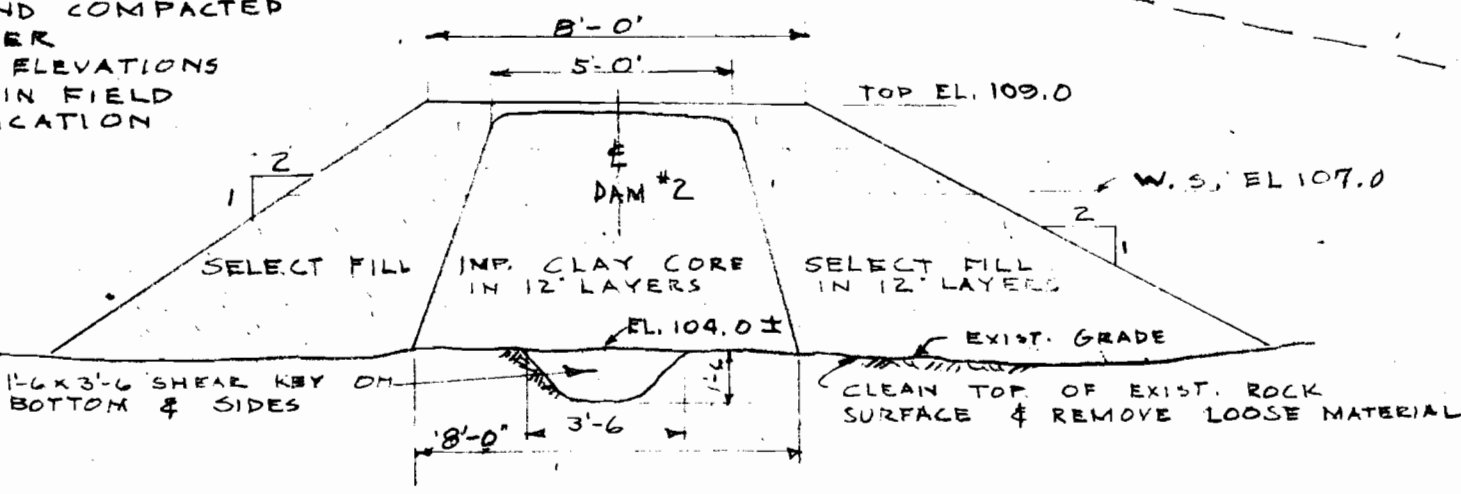
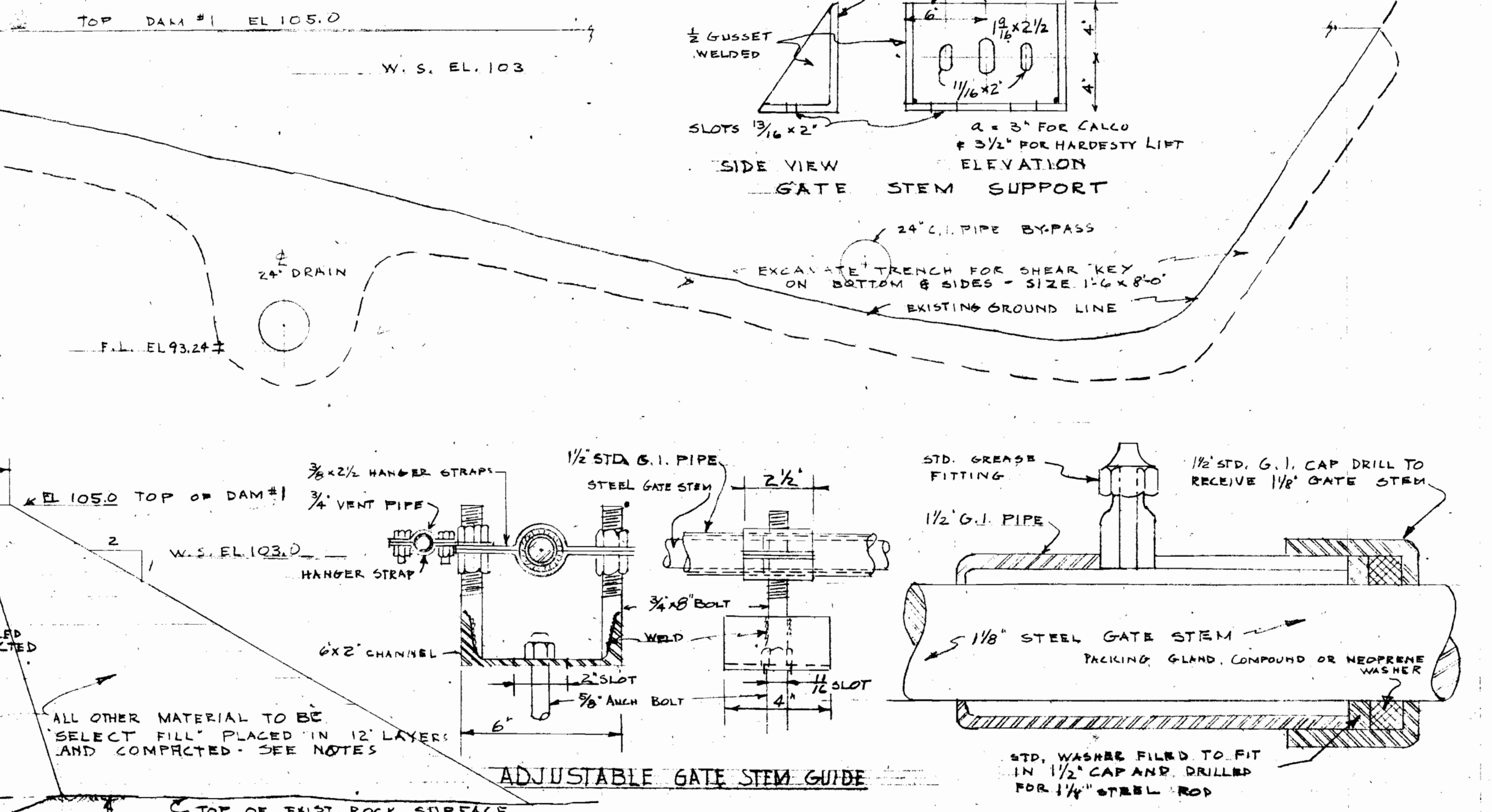


**DAM NOTES**  
 DAM FOUNDATION MATERIAL CONSISTS OF IMPERVIOUS HARD PAN & CONGLOMERATE REMOVE ALL LOOSE & SHATTERED MATERIAL UNDER DAMS AND CLEAN OFF SURFACE AS DIRECTED BY ENGINEER.  
 PROVIDE MINIMUM KEYS UNDER CORE AS SHOWN. SHEAR VALUE CORE MATERIAL = 400<sup>psi</sup>.  
 ALL DAM MATERIAL SHALL BE PLACED IN LAYERS AS INDICATED AND COMPACTED AS DIRECTED BY ENGINEER.  
 CONTRACTOR SHALL VERIFY ELEVATIONS, SLOPES & PIPE LENGTHS IN FIELD BEFORE STARTING FABRICATION.

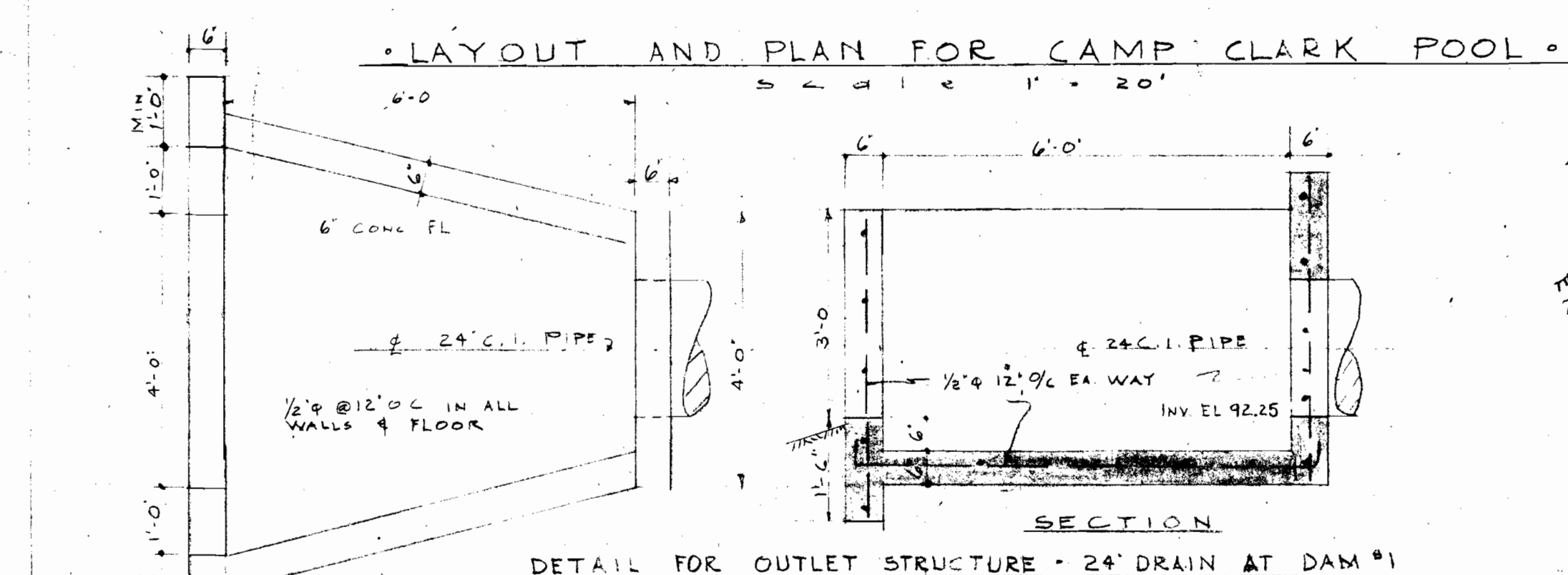


TYPICAL SECTION THRU DAM #2  
 scale 1/4" = 1'-0"

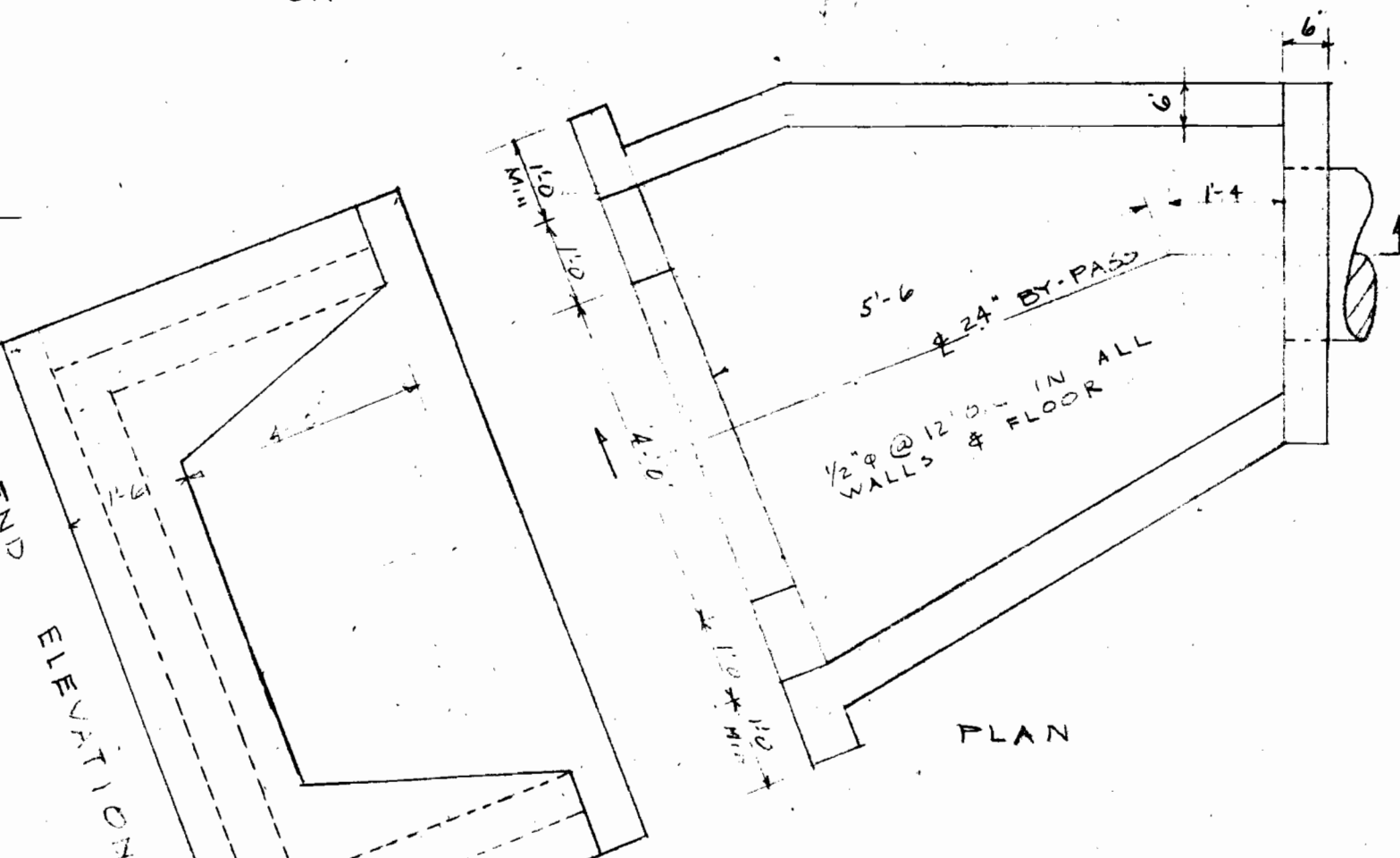
**NOTES:-**  
 ALL MATERIAL AROUND PIPES IN DAMS SHALL BE PLACED IN 6" LAYERS AND COMPACTED.  
 ALL TAMPING & COMPACTING METHODS SHALL BE APPROVED BY ENGINEER.  
 MATERIALS FOR CORE & SELECT FILL SHALL BE TAKEN FROM APPROVED BORROW PITS ONLY.



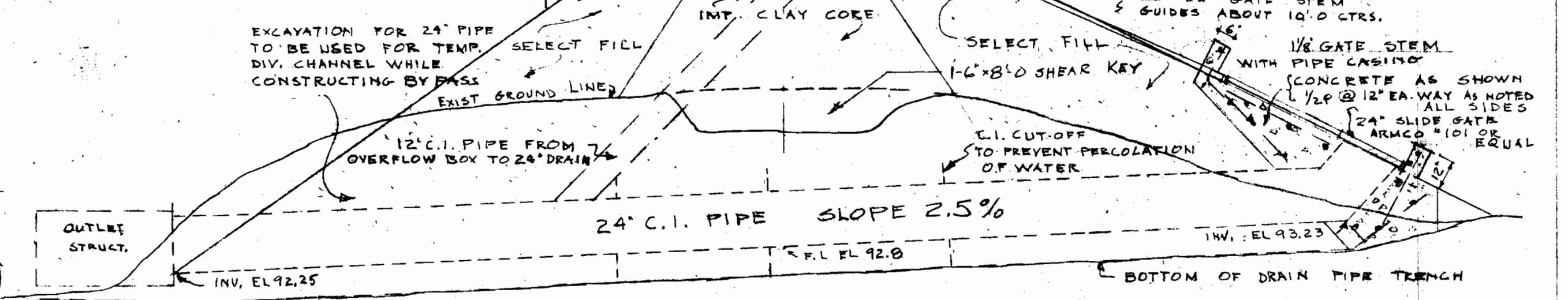
TYPICAL SECTION THRU DAM #1  
 scale 1/4" = 1'-0"



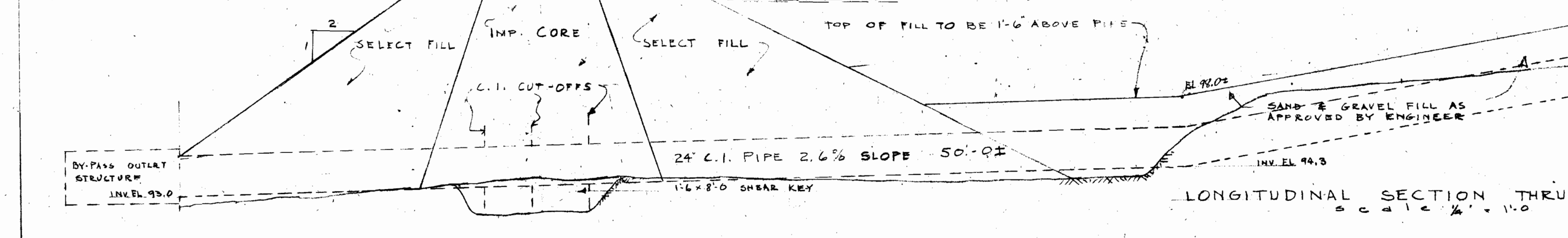
LAYOUT AND PLAN FOR CAMP CLARK POOL  
 scale 1" = 20'



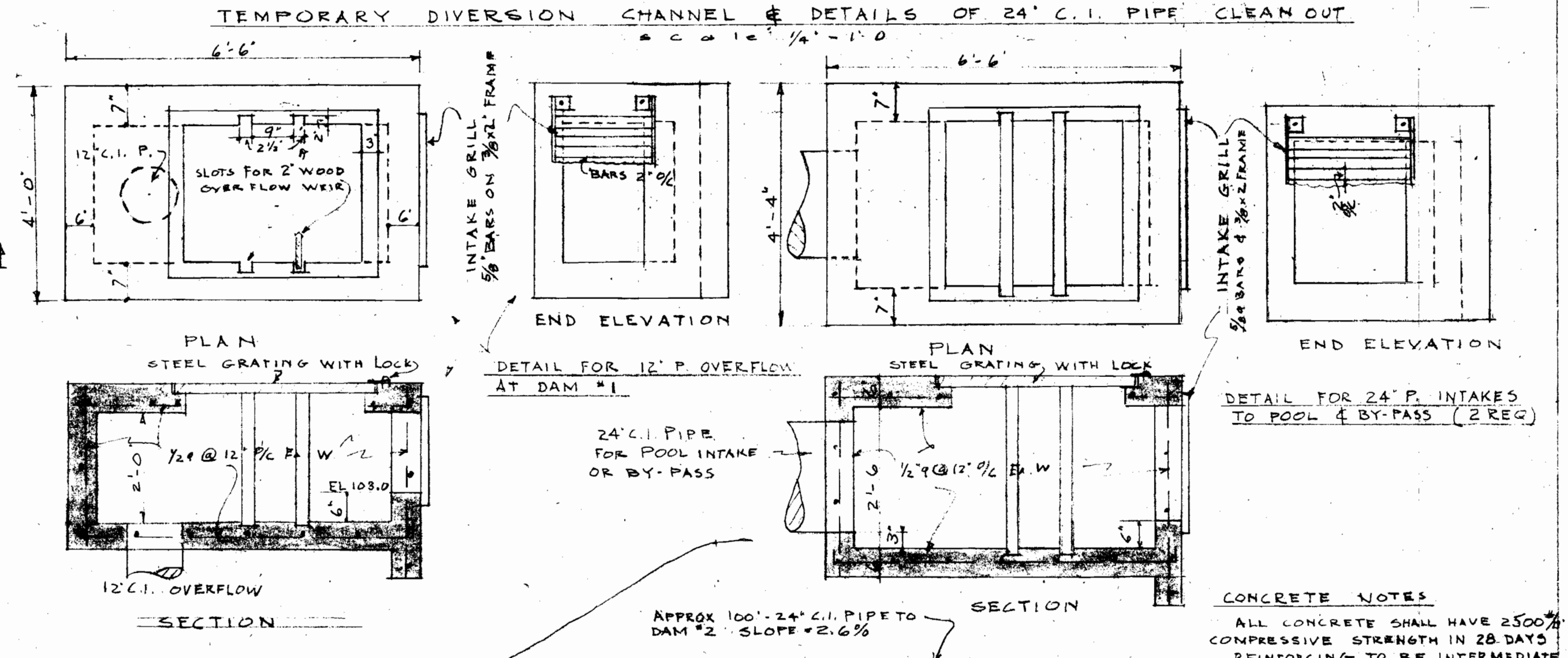
DETAIL FOR OUTLET STRUCTURE 24" BY-PASS AT DAM #1



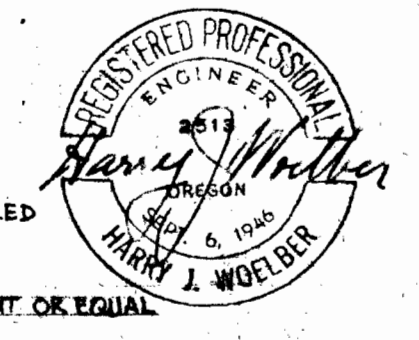
TEMPORARY DIVERSION CHANNEL & DETAILS OF 24" C.I. PIPE CLEAN OUT  
 scale 1/4" = 1'-0"



LONGITUDINAL SECTION THRU BY-PASS LINE  
 scale 1/4" = 1'-0"



DETAILS OF 12" P. OVERFLOW & 24" P. INTAKES



**CONCRETE NOTES**  
 ALL CONCRETE SHALL HAVE 2500<sup>psi</sup> COMPRESSIVE STRENGTH IN 28 DAYS.  
 REINFORCING TO BE INTERMEDIATE GRADE DEFORMED BARS.  
 MINIMUM COVER FOR REINFORCING SHALL BE 1 1/2".  
 ALL REINFORCING IN WALLS, FLOORS ETC. SHALL BE 1/2" @ 12" EACH WAY UNLESS OTHERWISE NOTED.  
 CHAMFER ALL EXPOSED CORNERS 3/4".

**PIPE & STEEL NOTES**  
 ALL CORRUGATED IRON PIPE SHALL BE STANDARD GALVANIZED.  
 ALL DOUBLE ASPHALT DIPPED PIPE (ARMCO) OR EQUAL.  
 ALL 12" C.I. PIPE SHALL BE 10 GA. 24" C.I. PIPE SHALL BE 14 GA.  
 ALL JOINTS MUST BE WATERTIGHT. USE "ARMCO" SPECIAL WATER TIGHT JOINT OR EQUAL.  
 PROVIDE ONE 24" ARMCO GATE TYPE IDI COMPLETE AS OUTLINED.  
 PROVIDE STEEL GRATING TOP OF OVERFLOW & INTAKES AS SHOWN WITH APPROVED LOCKING DEVICE.  
 PROVIDE INTAKE GRILLS AS SHOWN BOLTED TO CONCRETE.  
 ALL STEEL SHALL RECEIVE ONE SHOP COAT OF REPLEAD # OIL AND ONE FIELD COAT.  
 CONTRACTOR SHALL SUBMIT PIPE AND STEEL DETAILS TO ENGINEER FOR APPROVAL BEFORE COMMENCING FABRICATION.

**PORTLAND AREA COUNCIL OF BOY SCOUTS OF AMERICA**  
 SWIMMING POOL AT CAMP CLARK  
 MERIWETHER RESERVATION  
 HARRY J. WOELBER CONSULTING ENGINEER  
 307 MCKAY BLDG. PORTLAND, ORE.  
 MAY - 1955 MADE BY - H.J.W. SHEET #1 OF 1 SHEETS

For location see location map in secondary folder App. No. 32011.