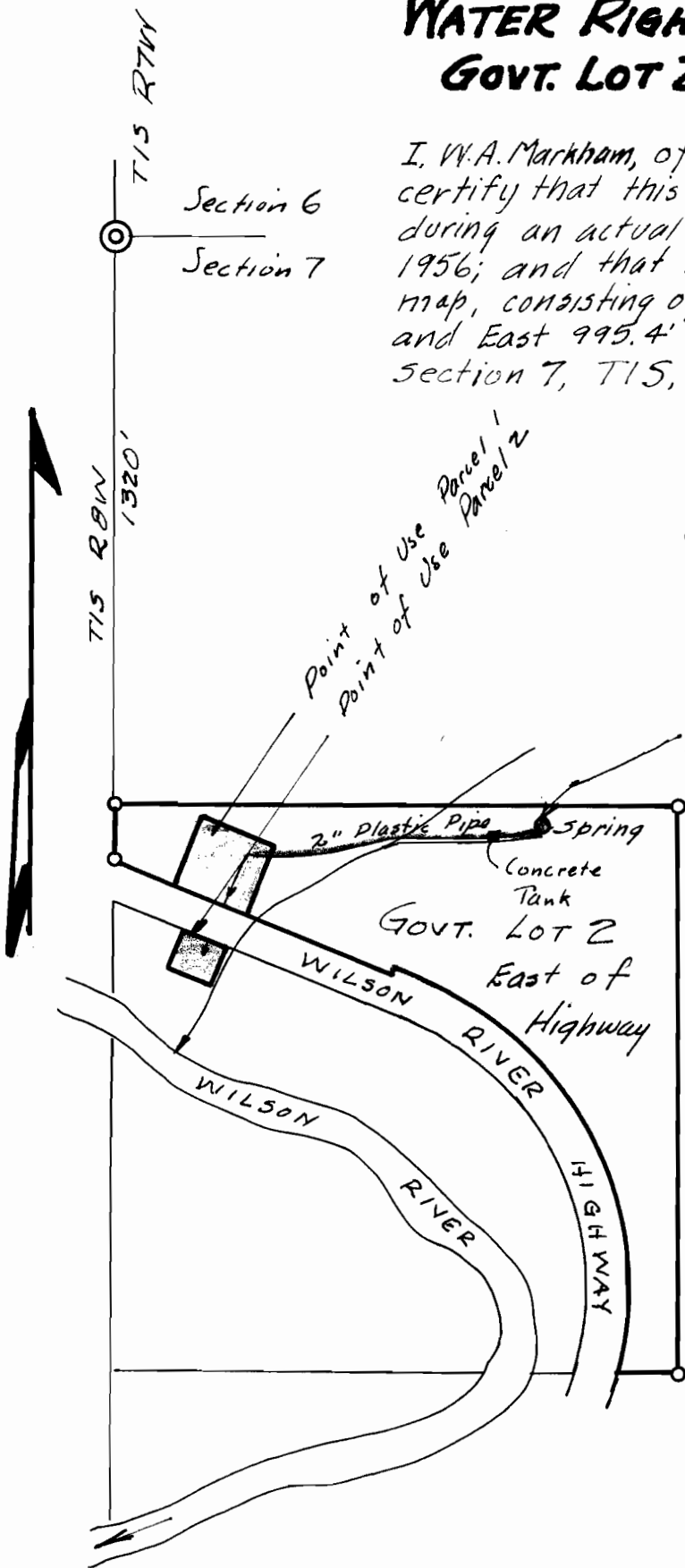


WATER RIGHT- O.S. FULLER GOVT. LOT 2, SEC 7, T1S, R7W, W.M.

I, W.A. Markham, of Arch Cape, Oregon, do hereby certify that this map was made from notes taken during an actual survey made by me on Nov. 12, 1956; and that the monument shown on this map, consisting of Iron Pipe 1"x5', is South 1362.3' and East 995.4' from the North West Corner of Section 7, T1S, R7W, W.M.

W.A. Markham

SCALE 1" = 400'



Point of Diversion
1"x5' Iron Pipe
South 1362.3' from NW
East 995.4' } Corner Sec 7



Application No. 31226
Permit No. 24612