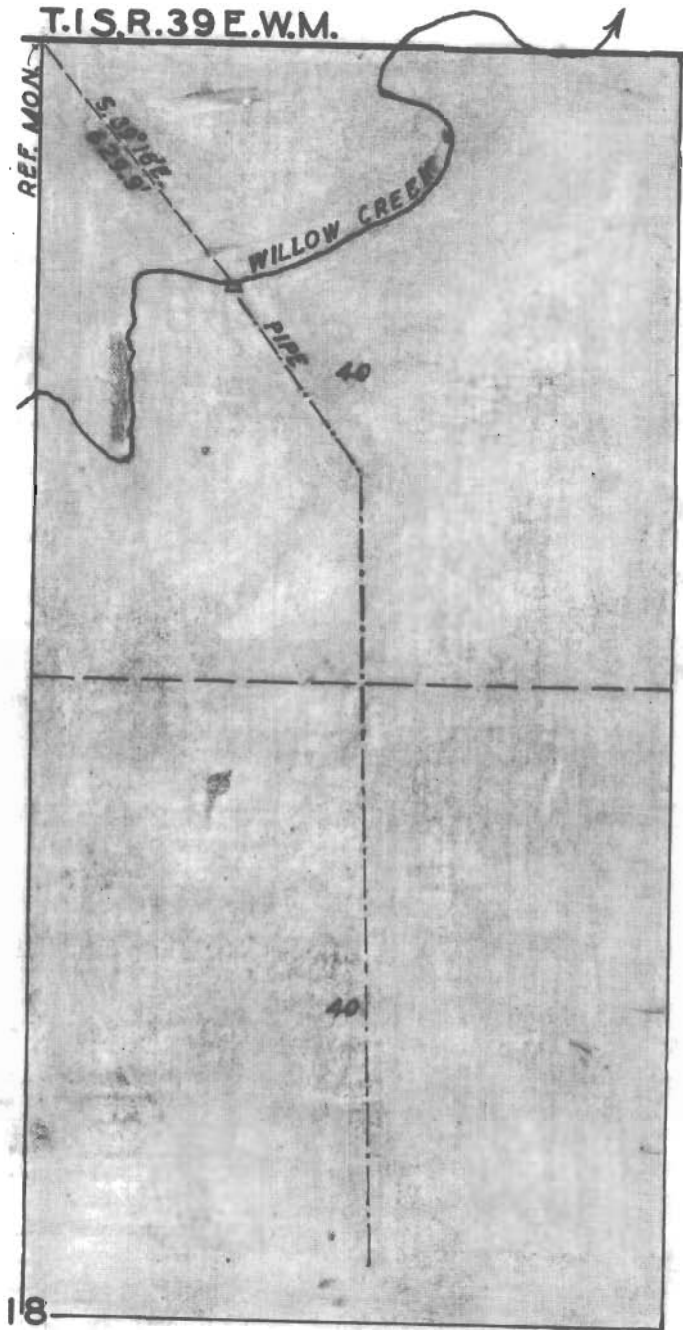


MAP  
TO  
ACCOMPANY APPLICATION OF T.S. TEETER  
FOR PERMIT TO APPROPRIATE WATER

SCALE 1" = 400'



I, A.H. MCLAIN, OF LA GRANDE, OREGON, DO HEREBY CERTIFY THAT THIS MAP WAS MADE FROM NOTES TAKEN DURING AN ACTUAL SURVEY MADE BY ME ON AUGUST 18, 1949; THAT THE MONUMENT SHOWN ON THIS MAP CONSISTS OF A 1" X 36" PIPE DRIVEN BY CORNER FENCE POST AT THE 1/4 SECTION CORNER BT. SECTIONS 7 - 18 - T.1 S. R. 39 E. W.M.

*A.H. McLain.*



**RECEIVED**

JAN 13 1950

STATE ENGINEER  
SALEM, OREGON

Application No. 24399  
Permit No. 19245.