

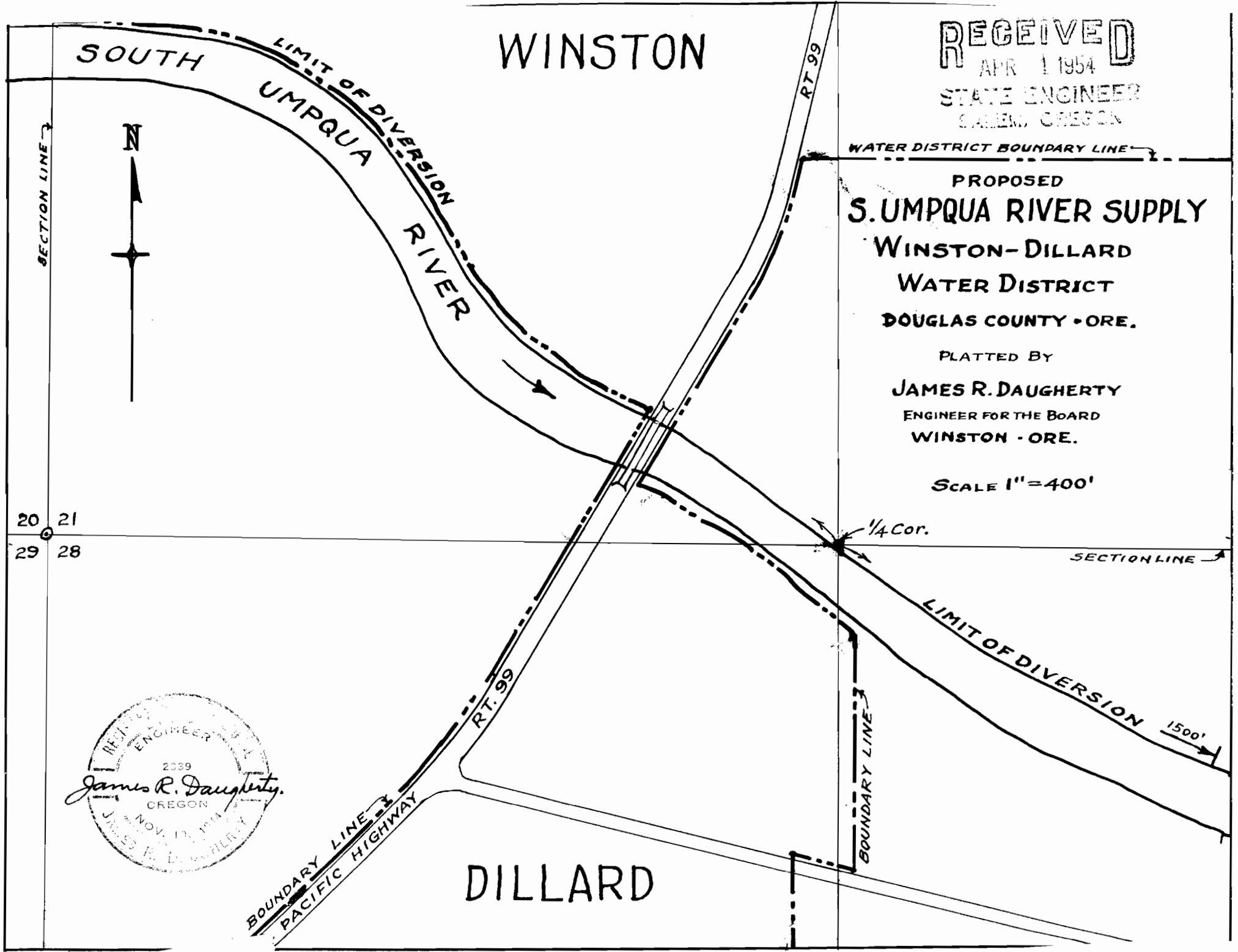
RECEIVED
APR 1 1954
STATE ENGINEER
SALEM, OREGON

WATER DISTRICT BOUNDARY LINE

**PROPOSED
S. UMPQUA RIVER SUPPLY
WINSTON-DILLARD
WATER DISTRICT
DOUGLAS COUNTY - ORE.**

PLATTED BY
JAMES R. DAUGHERTY
ENGINEER FOR THE BOARD
WINSTON - ORE.

SCALE 1" = 400'



SECTION LINE



20 21
29 28

SECTION LINE



BOUNDARY LINE
PACIFIC HIGHWAY

BOUNDARY LINE

1500'

DILLARD