

RIVER BEND ACRES

SECTION 23 - Twp. 26 S. - R. 6 W. - W.M.
DOUGLAS COUNTY, OREGON
Scale 1 inch = 200 ft.

CERTIFICATE OF SURVEYOR

I, Floyd C. Frear, being first duly sworn depose and say that I have surveyed and marked with proper monuments the lands shown on the annexed plat of which the following is a true and correct description to wit:-

Beginning at a 2 inch by 36 inch iron pipe on the West right of way line of County Road No 189 and from which the Interior "L" Corner of James M^cKinney D.L.C. No 47 in Section 23 - T.26S - R.6W - W.M. - Douglas County, Oregon bears 814 feet East and 2548 ft. South, Thence N.66°46'W 137.7ft. to a 1"x30" I. pipe, thence N.23°19'E 915.1 ft. to a 1"x36" I. pipe, thence N.49°04'W 694.8 ft. to a 3/4"x30" I. pipe, thence N.35°48'E 1270.0 ft., thence S.78°14'E 646.7 ft., thence S.66°13'E 592.2 ft., thence S.46°54'E 563.0 ft., thence S.52°23'W 615.0 ft. to a 1"x36" I. Pipe, thence N.41°04'W 60.0 ft. to a 1"x36" I. Pipe, thence N.48°56'E 10.0 ft., thence N.41°04'W 332.0 ft. to a 1"x36" I. pipe, thence N.53°48'W 286.0 ft. to a 1"x30" I. pipe, thence N.72°58'W 75.0 ft. to a 3/4"x30" I. Pipe, thence N.81°28'W 294.0 ft. to a 1"x30" I. pipe, thence S.73°20'W 282.3 ft. to a 1"x30" I. pipe, thence S.45°00'W 183.7 ft. to a 1"x30" I. pipe, thence S.36°25'W 277.6 ft. to a 1"x30" I. pipe, thence S.4°40'E 124.1 ft. to a 1"x30" I. pipe, thence S.20°52'E 269.0 ft. to a 1"x30" I. pipe, thence N.36°45'E 136.0 ft. to a 1"x30" I. pipe, thence S.51°27'E 538.0 ft. to a 1"x30" I. pipe, thence S.25°15'W 70.0 ft. to a 1"x30" I. pipe thence S.46°35'W 996.3 ft. to the place of beginning and containing 37.77 acres of land more or less.

APPROVALS

APPROVED August 4 1948
BY ORDER OF THE COUNTY COURT

D. W. Beckley
COUNTY JUDGE
D. W. Beckley
COUNTY COMMISSIONER
COUNTY COMMISSIONER

APPROVED July 22 1948

Ned Dixon
COUNTY ASSESSOR

APPROVED August 2 1948

F. C. Frear
COUNTY SURVEYOR

ROSEBURG PLANNING COMMISSION

APPROVED August 2 1948

Narval E. Johnson Secretary
Ben C. Johnson President

ACKNOWLEDGEMENT

State of Oregon } ss
County of Douglas } On the 19th day of July 1948
appeared DORIS SALVEN a single woman to me personally known, who being duly sworn did say that she is the owner of the lands shown on the annexed plat and acknowledged the adjacent instrument was her free act and deed.

IN TESTIMONY WHEREOF I hereunto set my hand and seal the day and year above written.

Roy Ague
COUNTY CLERK

DEDICATION

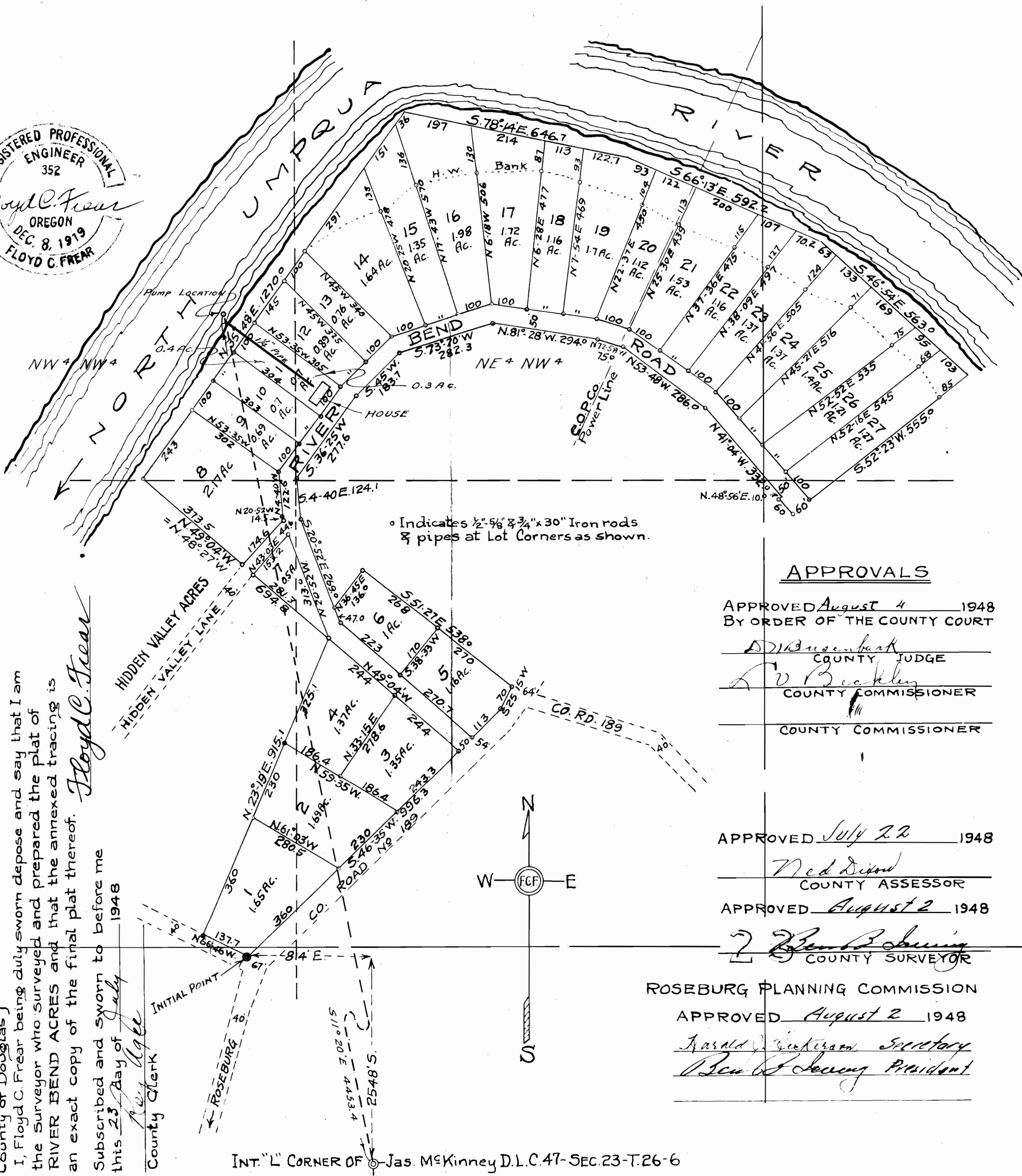
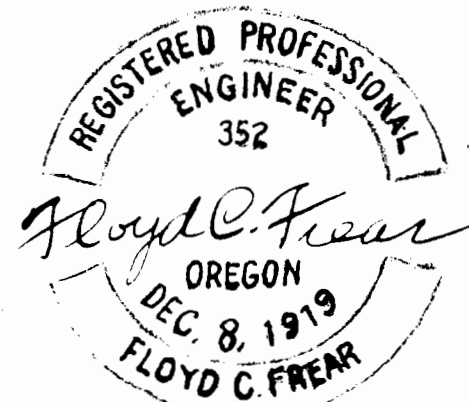
KNOW ALL MEN BY THESE PRESENTS: That I, DORIS SALVEN owner of the lands shown on the annexed plat, have caused the same to be surveyed and platted as and by the name of RIVER BEND ACRES and I do hereby dedicate to the public use forever the roads shown thereon.

Doris Salven

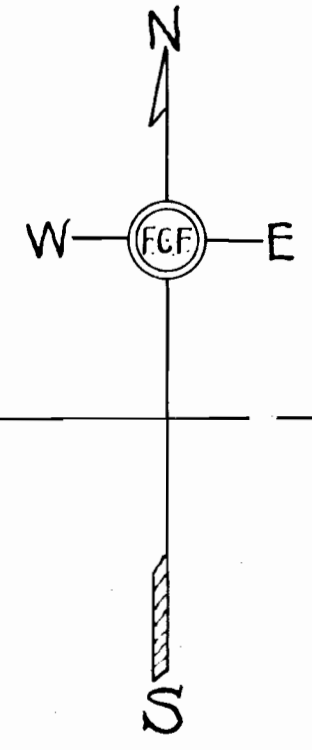
FILED August 4th 1948

Roy Ague
COUNTY CLERK

Application No. 30998
Permit No. 24673



o Indicates 1/2" 5/8" & 3/4" x 30" Iron rods & pipes at Lot Corners as shown.



INT. "L" CORNER OF Jas. M^cKinney D.L.C. 47 - SEC. 23 - T. 26 - 6

State of Oregon } ss
County of Douglas } I, Floyd C. Frear being duly sworn depose and say that I am the surveyor who surveyed and prepared the plat of RIVER BEND ACRES and that the annexed tracing is an exact copy of the final plat thereof.

Floyd C. Frear

Subscribed and sworn to before me this 23rd day of July 1948
Roy Ague
County Clerk