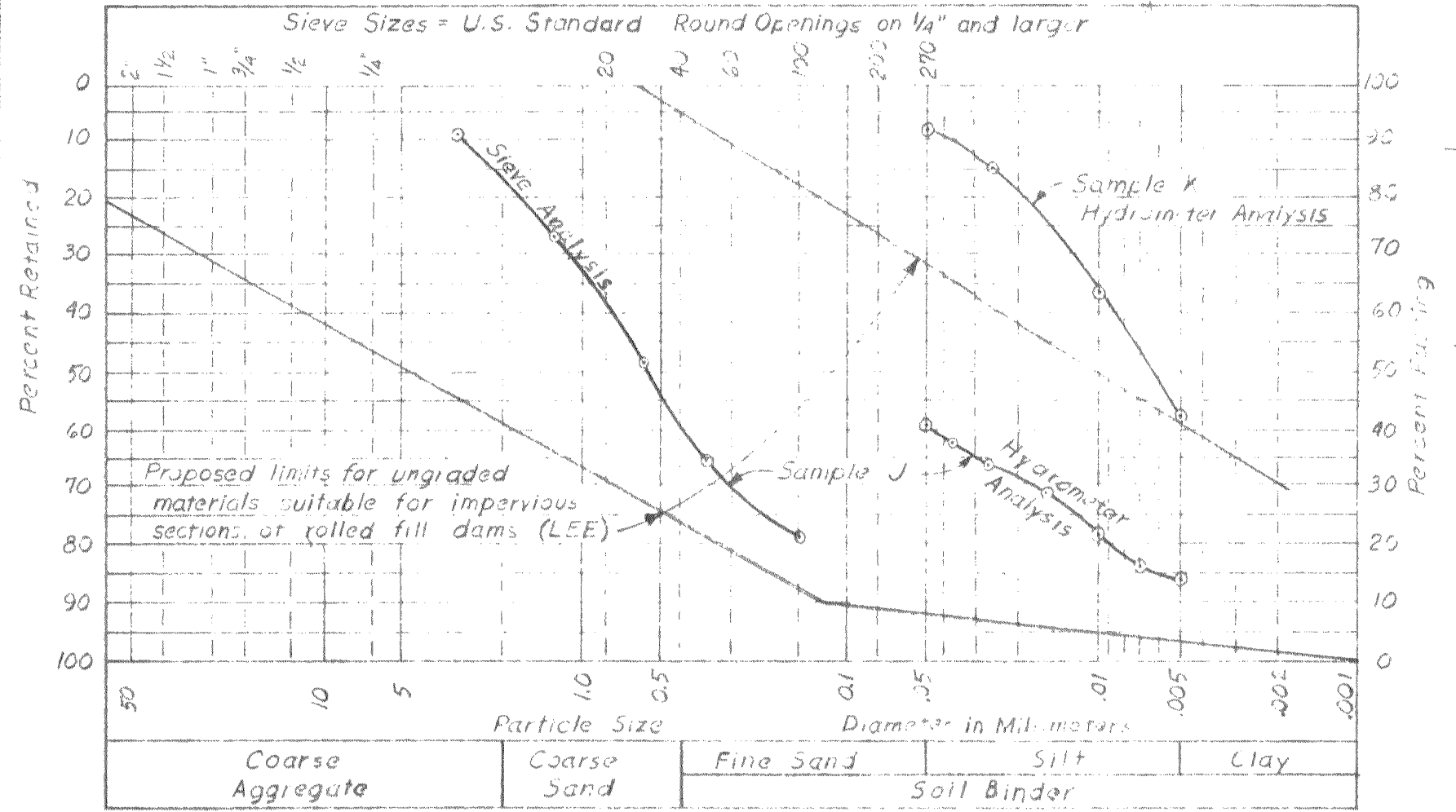
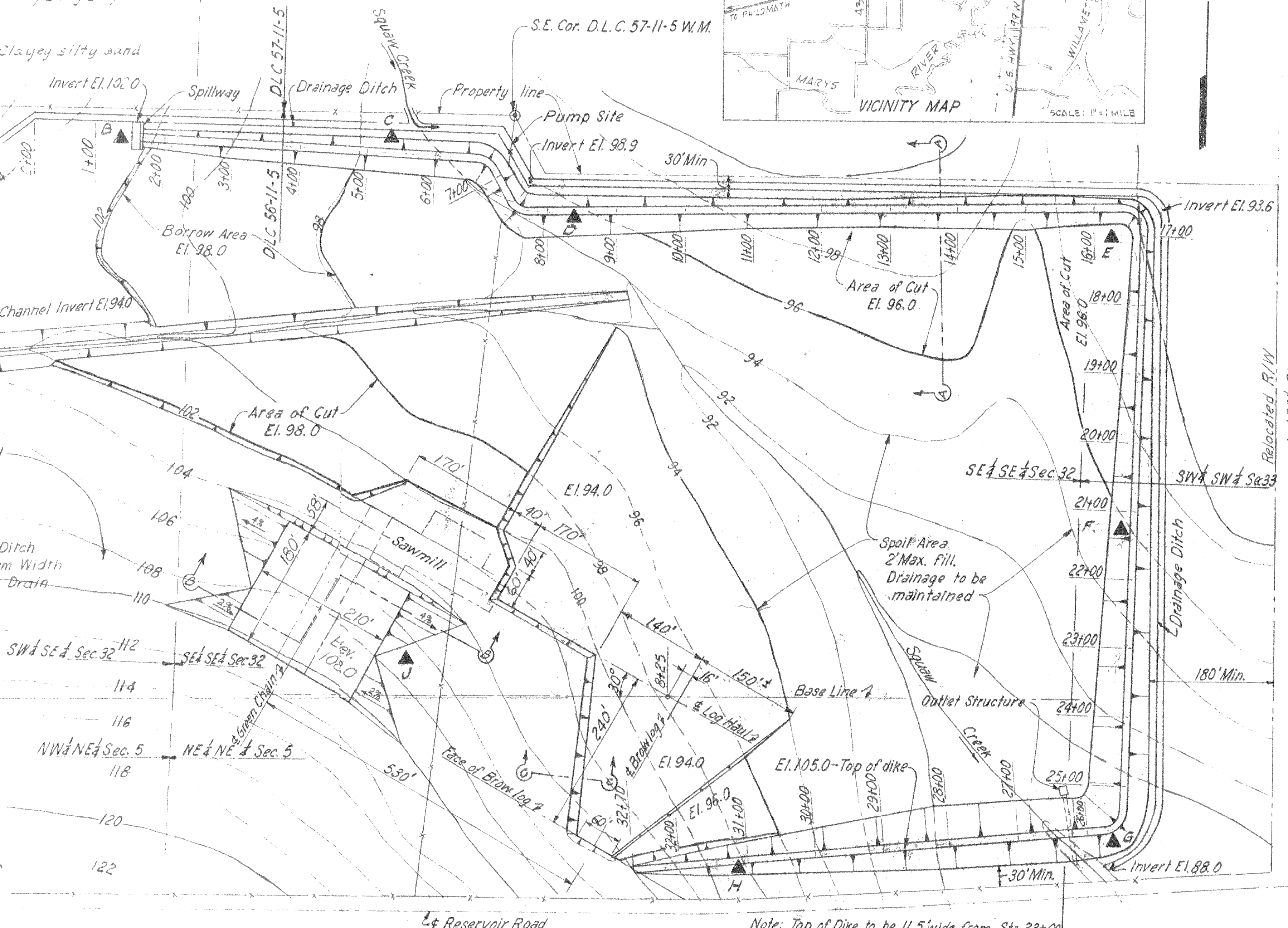


Note A: Diversion Point is 350' South and 110' West of the S.E. Cor D.L.C. 57-11-5 W.M.



- Notes:
- Elevations shown are to assumed datum.
  - Water surface elevation in log pond is 102.0
  - ▲ = location hand auger hole

- Recommend:
- Material from Test Hole J and vicinity to be used on downstream side of highest fill section.
  - Material similar to Sample K is satisfactory for all other fill material.

James Cottonwood

LARSON LUMBER COMPANY  
PHILOMATH, OREGON

MILL LOG POND  
Application No. 30743  
30744  
Permit No. 33868 & 24222

SCALE: 1" = 100' DATE: MAY 4, 1956 SHEET 1 OF 2

DES. GCM, DR. GCM, TR. CK. CORNELL, HOWLAND, HAYES & MERRYFIELD CONSULTING ENGINEERS CORVALLIS, OREGON DWG. NO. C-1143-1