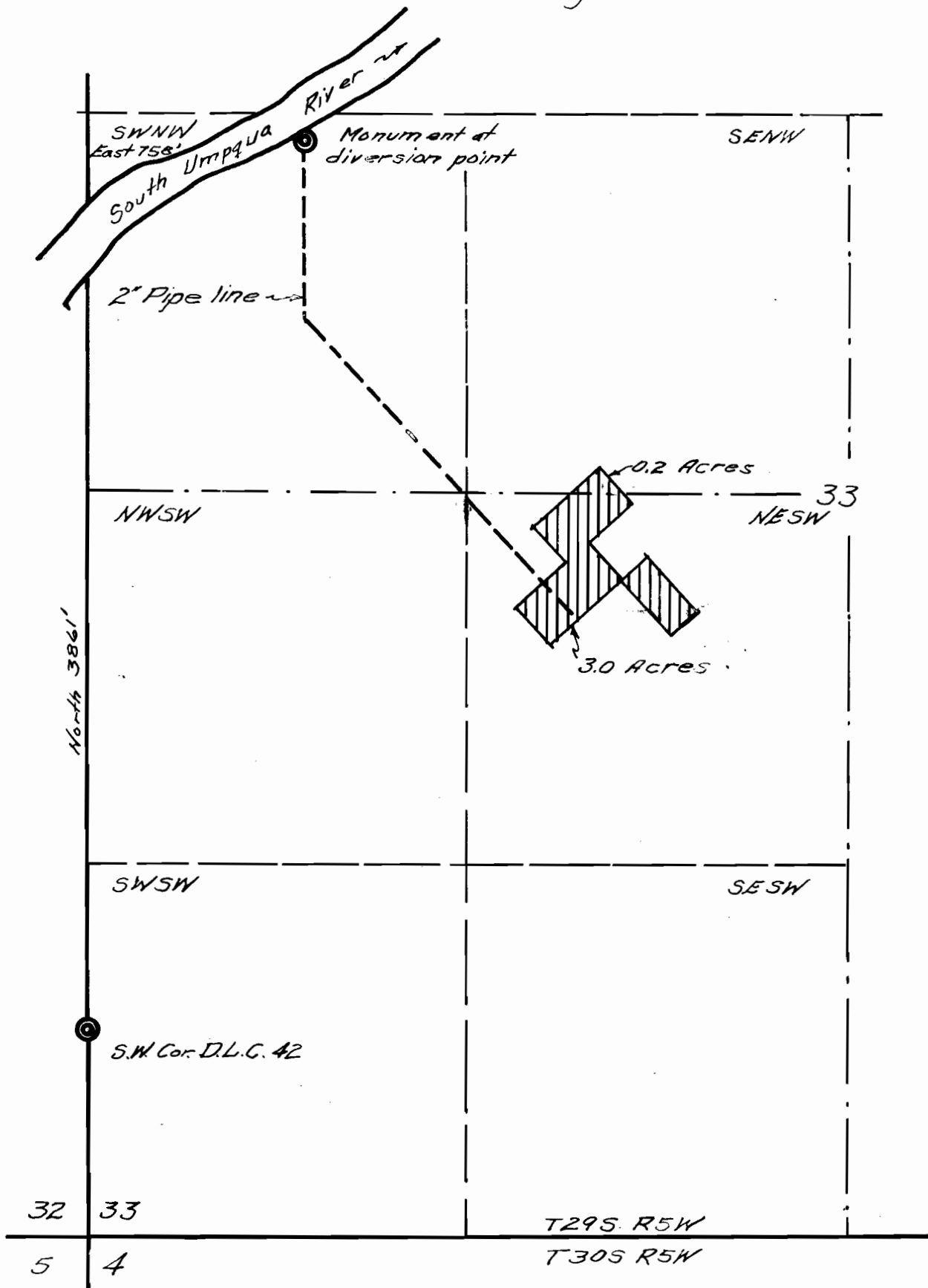


MAP
of
PROPOSED WATER RIGHT
for
~ PHIL & MABEL WILLIS ~
Scale 1" = 500' August 1951



I, John H. Markham, Jr. of Riddle, Oregon do hereby certify that this map was made from notes taken during an actual survey made by me on Aug. 23, 1951, that the monument shown on this map consisting of a 1'x30" iron pipe driven 24" in ground from which an Alder 11" in diam. bears S49°E 7.0' dist. mkd. W.R. 2880 B.T. An Ash 24" diam. bears S14°W, 6.5' dist. mkd. W.R. 2880 B.T. The monument is North 3861.0' and East 758.0' from the S.W. Corner of Section 33, T29S, R5W, W.M. Douglas County, Oregon.

