

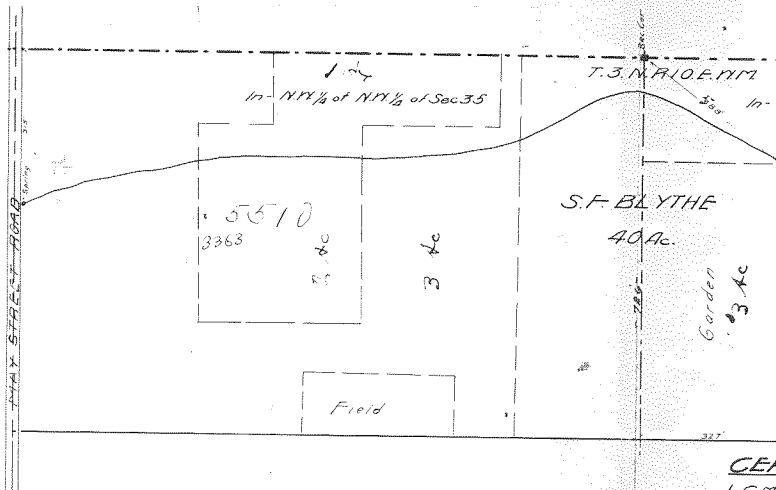
**CERTIFICATE of SURVEYOR**

I, C. M. Hurlburt, of Hood River, Oregon, do hereby certify that this map was made from notes taken during an actual survey made under my immediate supervision on the 19<sup>th</sup> day of April 1917, and that it correctly represents the works described in the accompanying application, together with the location of streams and other ditches in the immediate vicinity, and has written thereon the area in each smallest legal subdivision which it is proposed to irrigate.

C. M. Hurlburt

Co. Sur.

2210



**MAP**

*Accompanying application for permit  
to appropriate water for  
irrigation purposes by*

**S. F. BLYTHE**

*In Sections 26 & 35 T.3.N. R.10.E. 11M.*

*Scale 1" = 200' - April 21, 1917.*

**GEN**

*1. G.M.  
hereby  
from  
made  
on the  
it con-  
cribed  
togeth  
and on  
ity. a  
in each  
which*