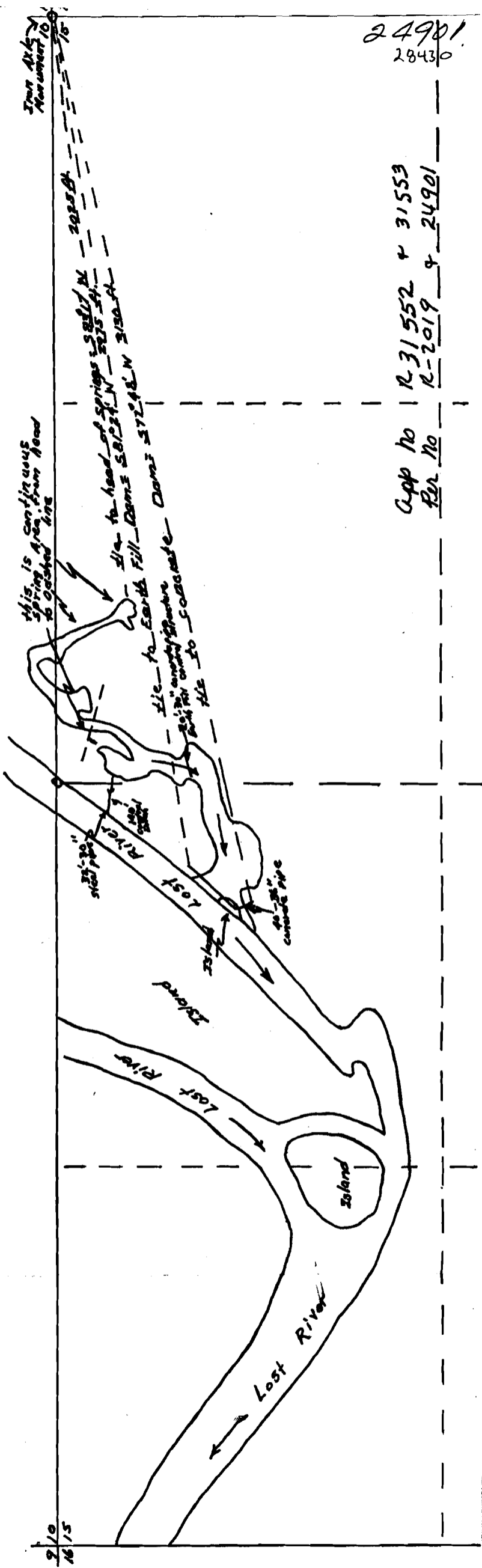


SW 1/4 Sec 14 Section 10, T39S, R11E N1/4, Klamath County,
Oregon

Last River mae.

Scale: 1" = 400'
April 24, 1957

NE 1/4 NW 1/4, NW 1/4 NE 1/4, Sec 15 + SW 1/4 SE 1/4 Sec 10
T39S R11E N1/4.



24901
28430

App No	R-31552 + 31553
Per No	R-2019 + 24901

This is continuous
spring area from head
to dashed line

4 1/2 mi. to head of springs 5812 ft N - 5825 ft N - 5830 ft N

Fill-Dams 5812 ft N - 5825 ft N - 5830 ft N

lie to earth fill-Dams 5729 ft N - 5730 ft N

lie to cascade-Dams 5729 ft N - 5730 ft N

lie to cascade-Dams 5729 ft N - 5730 ft N

lie to cascade-Dams 5729 ft N - 5730 ft N

Iron Age
Mar 1957 10

9/10
16/15