



PROJECT MAP

DEPT. OF THE
USING SERVICE

LOCATION OF PROJECT

STATE OREGON
 COUNTY BENTON
 DIVISION
 DISTRICT
 ARMY AREA
 MILES OF
 MILES OF

TRANSPORTATION FACILITIES

RAILROADS
 STATE ROADS
 FEDERAL ROADS
 AIR LINES

ACQUISITION

TOTAL ACRES ACQUIRED
 FEE
 PUBLIC DOMAIN (PERM. WITHDRAWAL / TEMP. WITHDRAWAL)
 USE PERMIT
 TRANSFER
 LEASE
 LESSER INTERESTS

DISPOSAL

TOTAL ACRES DISPOSED OF
 SOLD
 PUBLIC DOMAIN (PERM. WITHDRAWAL / TEMP. WITHDRAWAL)
 USE PERMIT
 TRANSFERRED
 LEASES TERMINATED
 LESSER INTERESTS TERM.
 REASSIGNED
 OTHER

LEGEND

EXCEPT FOR THE SPECIAL SYMBOLS SHOWN BELOW MAP
 SYMBOLS ARE STANDARD IN ARMY MAP SERVICE
 TECHNICAL MANUAL NO. 23.

- RESERVATION LINE
- RESERVATION LINE (Actual Survey)
- TRACT BOUNDARY LINE
- TRACT NUMBER
- CONTOUR LINE
- DISPOSAL

DISTRICT ENGINEER
 U. S. ARMY ENGINEER DISTRICT, SEATTLE
 NORTH PACIFIC DIVISION

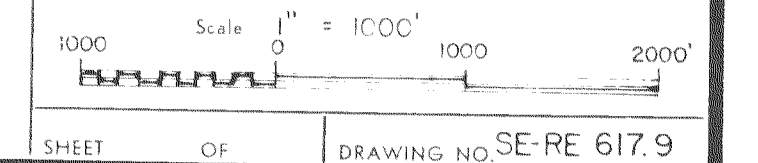
REAL ESTATE
 WATER LINE
ADAIR AIR FORCE STATION
 (OFF SITE UTILITIES)
 MILITARY RESERVATION

DRAWN BY RCG
 TRACED BY
 CHECKED BY
 SUBMITTED BY
R. Magier
 CHIEF, CADASTRAL SECTION
 RECOMMENDED BY

APPROVED BY
 CHIEF, REAL ESTATE DIVISION COLONEL CORPS OF ENGINEERS DATE 27 March 1961

OFFICE, CHIEF OF ENGINEERS, WASHINGTON 25, D. C.

DATE	REVISIONS	BY



INSTALLATION OR PROJECT NO. SHEET OF DRAWING NO. SE-RE 617.9