

RIVER BEND ACRES-PLAT "A"

SECTION 23-T.26S-R.6W-W.M. DOUGLAS Co.- OREGON

CERTIFICATE OF SURVEYOR

I, Floyd C. Frear, being first duly sworn depose and say that I have correctly surveyed and marked with proper monuments the lands shown on the annexed plat of which the following is a true and correct description to wit:-

Beginning at a 2"x36" Iron pipe on the North right of way line of County Road No 189 and from which the Interior "L" Corner of James McKinney D.L.C. No 47 in Section 23-T.26S-R.6W.-W.M. Douglas County, Oregon, bears S.0°17'E. 3263.2 feet, Thence N16°11'E. 70ft. thence N.42°10'E. 180ft, thence S.52°36'E. 276.3 ft, thence N.50°43'E. 375.6 ft, thence N.41°04'W. 290 ft, thence S.50°43'W. 208.2ft. thence N.41°25'W. 250 ft, thence S.89°39'W. 420 ft., thence S.36°24'W. 270 ft, to the N.W. Cor Lot 6 "RIVER BEND ACRES" thence N.25°28'W. 350.2 ft to the South Line "RIVER BEND ROAD", thence along said line as follows:- N.35°30'E. 197 ft., N.45°E. 193.7 ft, N.72°08'E. 277 ft., S.81°45'E. 292 ft, S.74°E. 82ft. S.53°48'E. 291 ft, S.41°04'E. 333 ft., S.48°56'W. 10 ft., S.41°04'E. 60ft, thence N.52°23'E. 615 ft to the south side of the North Umpqua River, thence along same as follows:- S.46°54'E. 220ft, S.9°44'E. 655.5ft, thence S.67°05'W. 730.8 ft, thence S.14°56'E. 220.5 ft. to the North Line Co. Rd. 189 thence along same as follows:- N.87°30'W. 262 ft., N.46°09'W. 388 ft., N.72°49'W. 362.4 ft, N.27°55'W. 54 ft, to the place of beginning and containing 33.07 acres of land more or less.

Floyd C. Frear REG. ENG'R No 352

Certificate of Surveyor, subscribed and sworn to before me this

21st day of August 1950 Roy Agee
County Clerk

DEDICATION

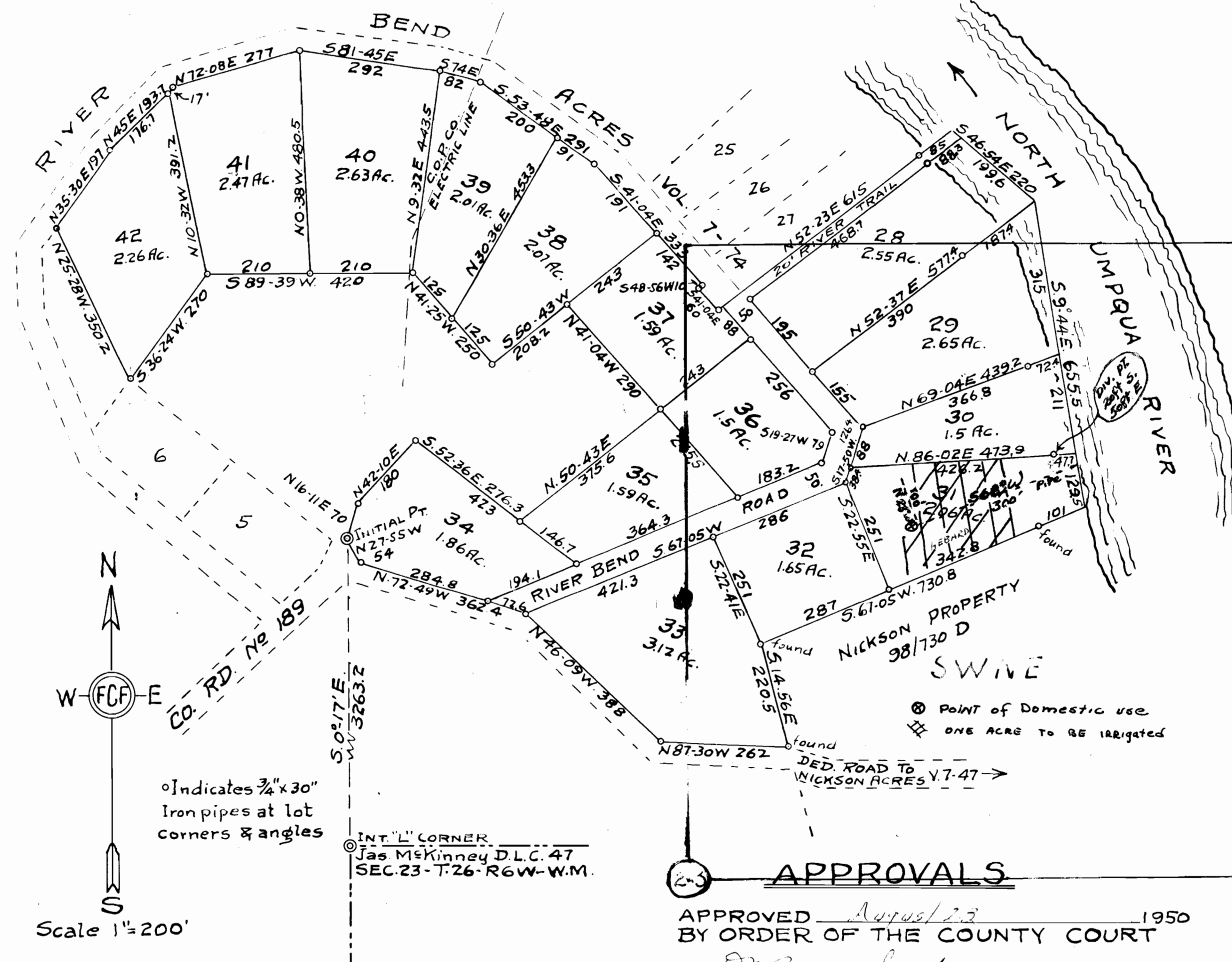
KNOW ALL MEN BY THESE PRESENTS:- That we George C. Blanck and Donna B. Blanck owners of the lands shown on the annexed plat, have caused the same to be surveyed and platted as and by the name of RIVER BEND ACRES-PLAT "A" and we do hereby dedicate to the public use forever the roads shown thereon

George C. Blanck
Donna B. Blanck

ACKNOWLEDGEMENT

State of Oregon }
County of Douglas }
On the 21st day of August 1950 appeared George C. Blanck and Donna B. Blanck husband and wife to me personally known, who being duly sworn did say that they are the owners of the lands shown on the annexed plat and acknowledged the adjacent instrument was their free act and deed.
IN TESTIMONY WHEREOF I hereunto set my hand and seal the day and year above written.

Roy Agee
County Clerk



APPROVALS

APPROVED August 23 1950
BY ORDER OF THE COUNTY COURT

D. B. Busch County Judge
L. D. Beckley Co. Commissioner
P. G. Baker Co. Commissioner

APPROVED August 23 1950

W. E. Dillard
County Assessor

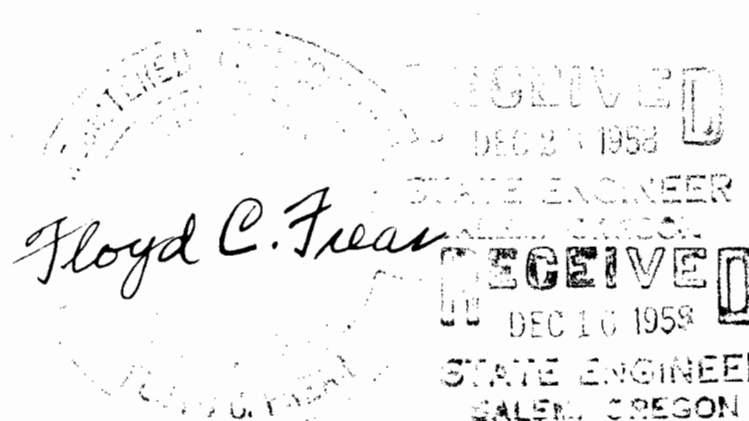
APPROVED August 23 1950

Floyd C. Frear
County Surveyor

ROSEBURG PLANNING COMMISSION

APPROVED July 24th 1950

W. E. Dillard Secretary
Fred B. ... President



FILED August 29th 1950

Roy Agee
County Clerk

Application No. 32796
Permit No. 25873

State of Oregon }
County of Douglas }
I, Floyd C. Frear, being duly sworn depose and say that I am the surveyor who surveyed and prepared the plat of "RIVER BEND ACRES PLAT A" and that the annexed tracing is an exact copy of the final plat thereof.

Floyd C. Frear
Subscribed and sworn to before me this 21st day of August 1950
Roy Agee
County Clerk

State of Oregon }
County of Douglas }
I, Roy Agee, County Clerk of Douglas County, Oregon, do hereby certify that the within copy of plat has been by me compared with the original thereof and that it is an exact copy thereof as the same appears on file in my office and custody. Witness my hand and official seal this 29th day of August 1950
Roy Agee
County Clerk