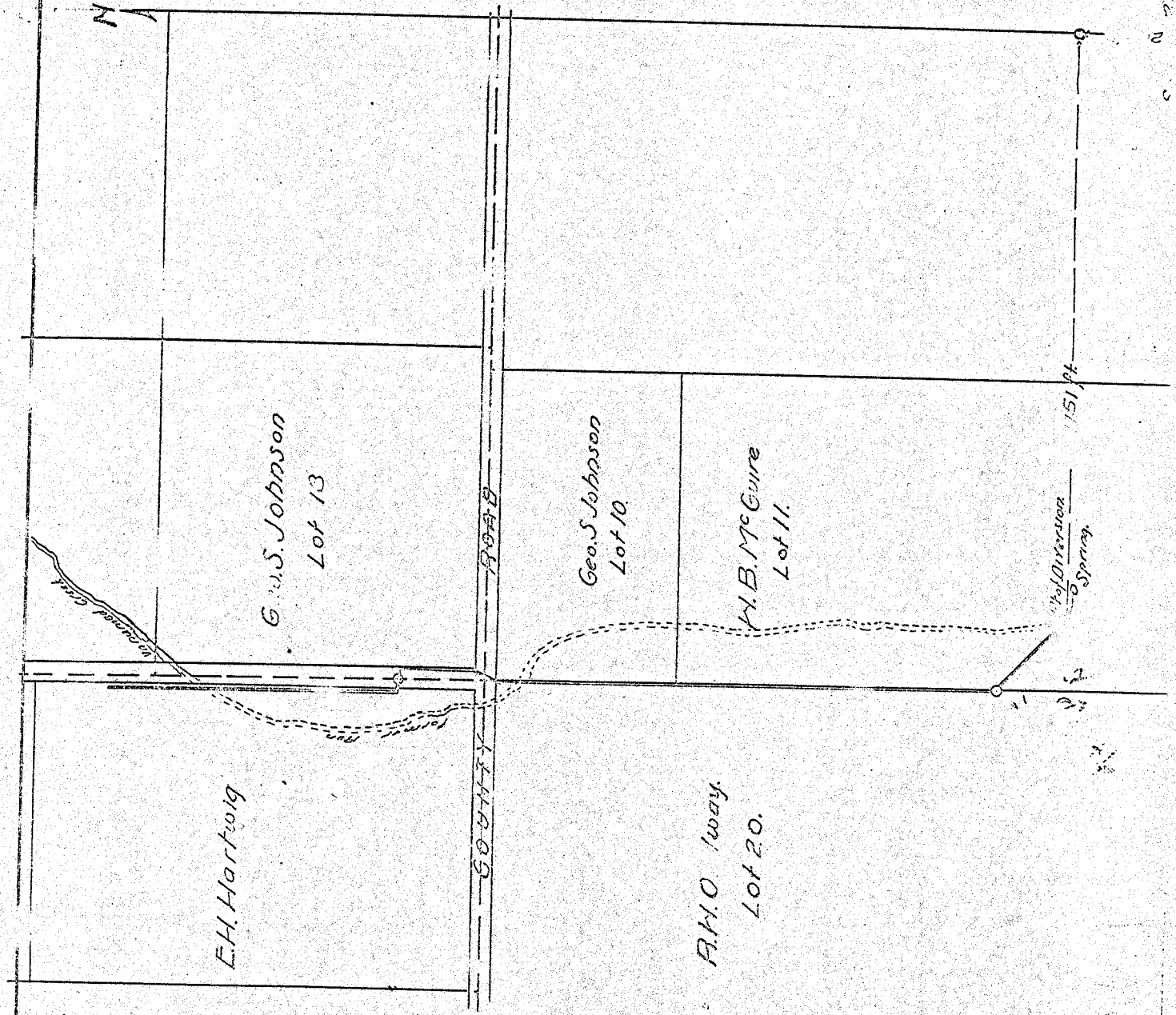


4390



L.P.

Accompanying application to appropriate water for irrigation purposes.

E.H. HARTWIG  
In N.W. 1/4 Sec 36, T. 24 N. R. 3 W. S. 10.  
Scale 1 in. = 300 ft. Ja.

CERTIFICATE - of - SL  
I, A.B. McGuire, Surveyor of Hood River, Oregon, do hereby certify that this map was made by me during an actual survey taken during the month of August, 1911, and that it correctly represents the location of stream and other immediate vicinity.

Q.

Application No. 692  
Hood River, Oregon 4390

N 25