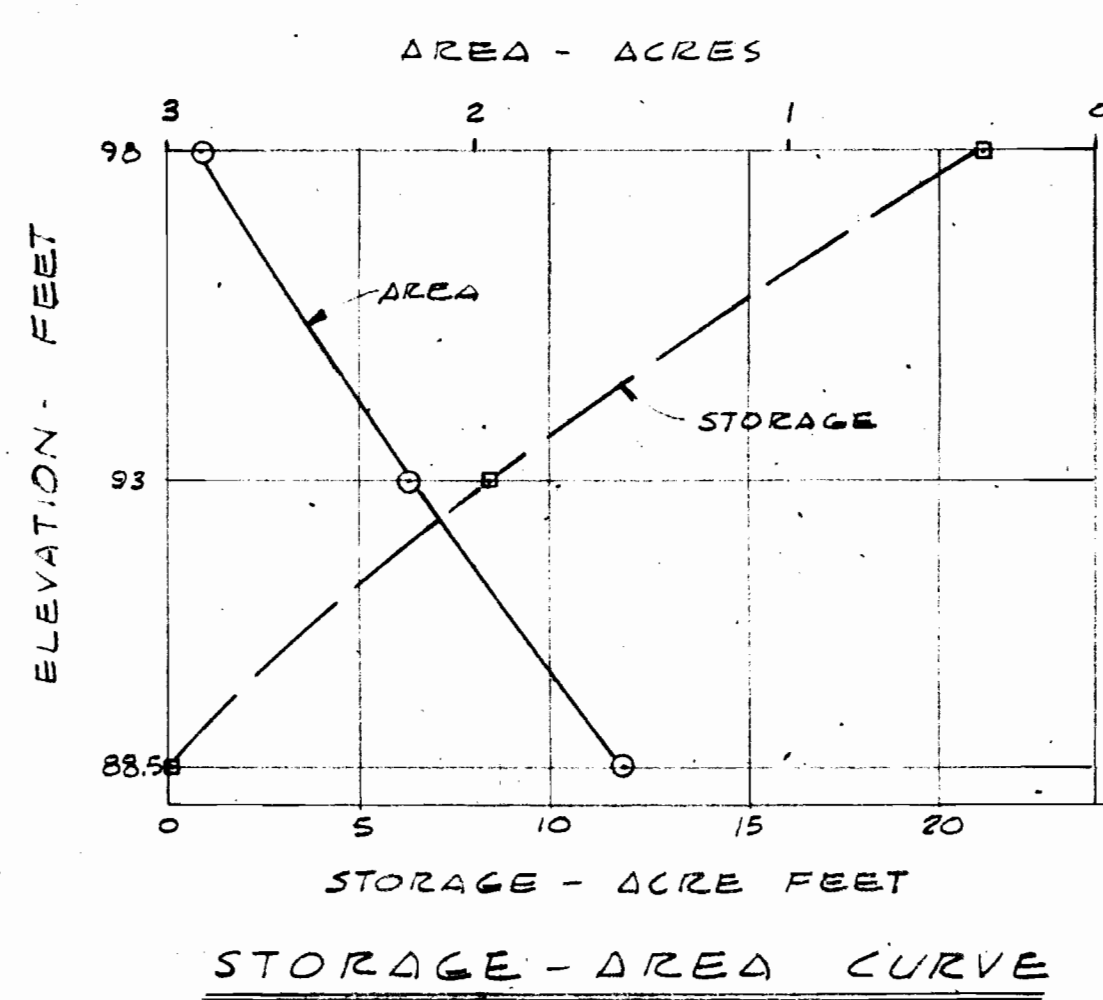
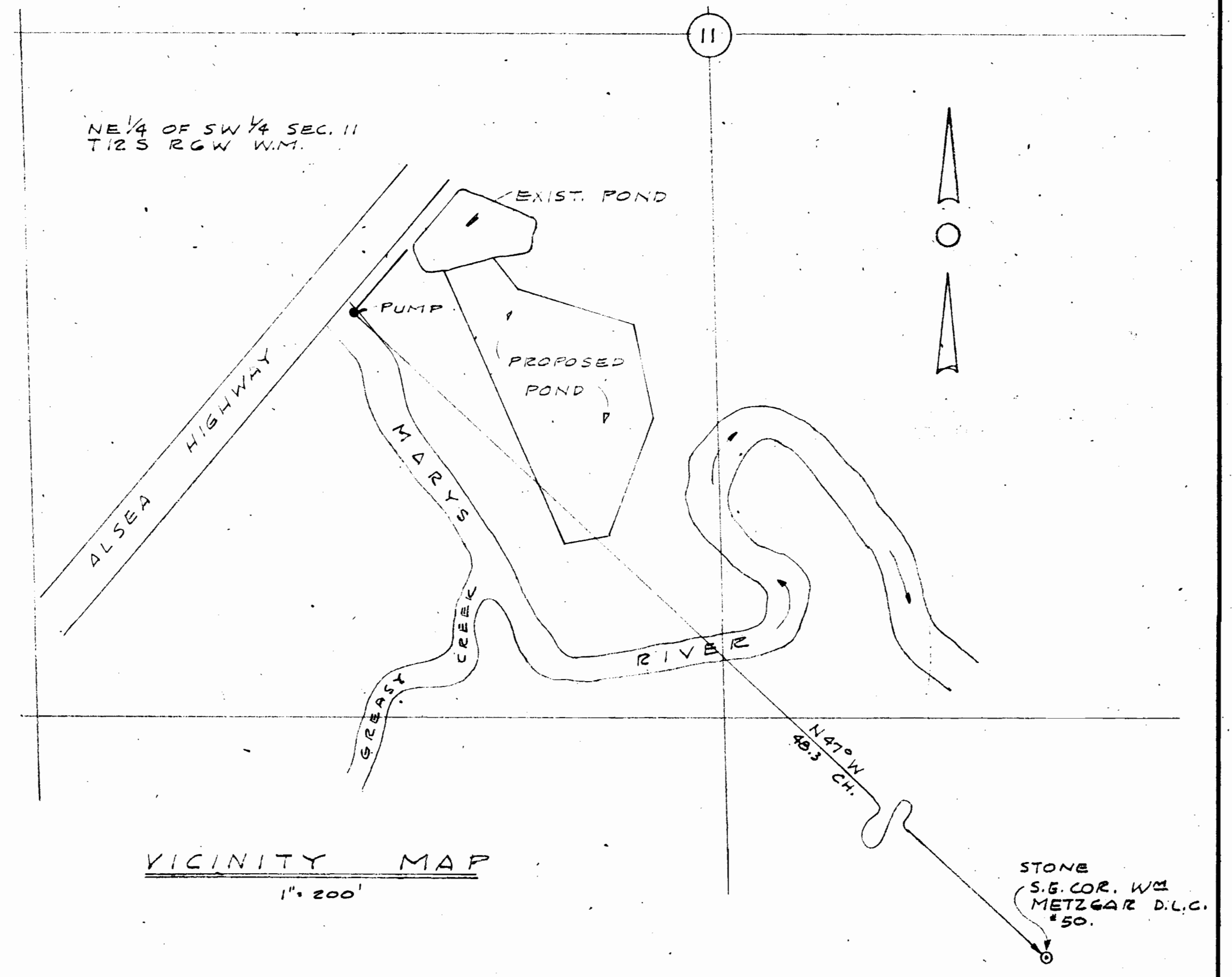


PLOT PLAN
1" = 50'



STORAGE - AREA CURVE

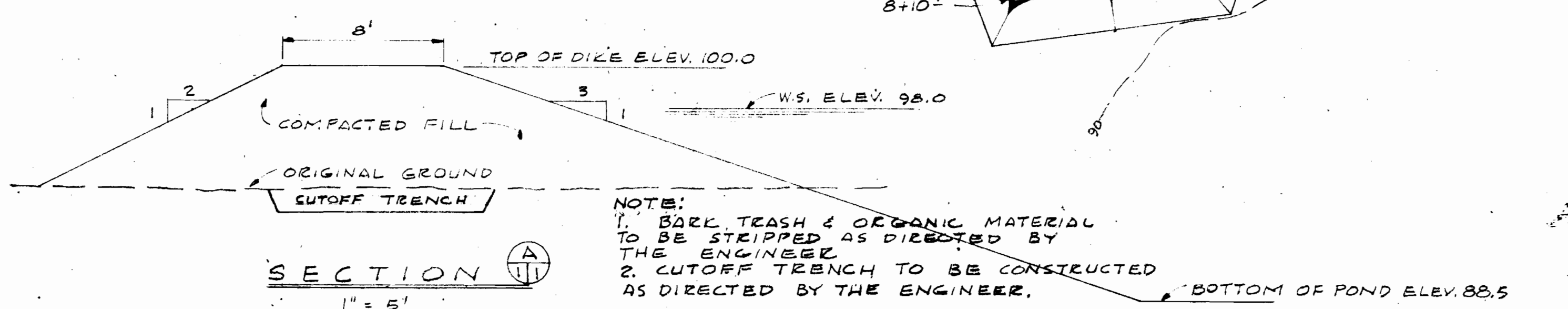


VICINITY MAP
1" = 200'

DEPTH IN FEET	TEST HOLE 1	TEST HOLE 2
0	ML DARK BROWN, LOOSE CLAYEY SILT.	ML DARK BROWN, LOOSE SANDY SILT.
1	ML DARK BROWN MOIST, MED. DENSE CLAYEY SILT.	ML BROWN, MED. DENSE, SANDY SILT.
2	ML DARK BROWN MOIST, MED. DENSE CLAYEY SILT.	ML BROWN, MOIST DENSE SANDY SILT.
3	CL BROWN, PLASTIC MED DENSE SILTY CLAY.	ML

LOG OF TEST HOLES

Application No. R-33149 & 33150
Permit No. R-2246 & 26211



SECTION
1" = 5'

NOTE:
1. BARK TEASH & ORGANIC MATERIAL TO BE STRIPPED AS DIRECTED BY THE ENGINEER.
2. CUTOFF TRENCH TO BE CONSTRUCTED AS DIRECTED BY THE ENGINEER.

APPROVED June 11, 1959
Robert A. Stanley
BY THE ENGINEER



BENTON TIMBER PRODUCTS CORP., PHILOMATH, ORE.
LOG POND EXPANSION

VICINITY MAP & PLAN.

SCALE: AS SHOWN DATE: JUNE 2, 1959 SHEET: OF 1

DR. E.H.W. CORNELL, HOWLAND, HAYES & MERRYFIELD DWG. NO. C1878-1
DR. E.H.W. CORVALLIS, OREGON ENGINEERS BOISE, IDAHO