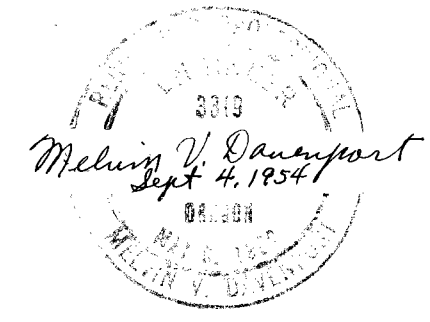


REMARKS	DATE
F.B. 230	10/15/53

ENGINEERS CERTIFICATE
 I, MELVIN V. DAVENPORT OF CALDWELL,
 IDAHO DO HEREBY CERTIFY THAT
 THIS MAP WAS MADE FROM NOTES
 TAKEN FROM AN ACTUAL SURVEY
 MADE BY ME, OR UNDER MY
 IMMEDIATE SUPERVISION ON
 OCT. 15, 1953; THAT THE MONUMENT
 SHOWN ON THIS MAP CONSISTING
 OF A BRASS CAP ON A 2" PIPE SET
 IN CONCRETE IS LOCATED AT THE
 N 1/4 COR. ON NORTH-SOUTH CENTER-
 LINE OF SEC. 33, T. 20 S. R. 4 E. W.M.



MAP
 TO ACCOMPANY APPLICATION
 OF OWYHEE DITCH CO. TO
 APPROPRIATE THE PUBLIC
 WATER OF THE STATE OF OREGON.

MELVIN V. DAVENPORT
 AND ASSOCIATES, ENGINEERS
 CALDWELL, IDAHO

FOR
 OWYHEE DITCH COMPANY
 ONTARIO, OREGON

MAP OF
 COW HOLLOW GULCH
 WASTEWAY
 OWYHEE CANAL CROSSING

DRAWN BY R.D.C.
 APPROVED BY
Melvin V. Davenport

SCALE: 1" = 50'
 TRACED BY M.T.G.
 SEPT 4, 1954

TOWNSHIP 19 S.,

RANGE 47 E.

RECEIVED
MAY 4 1955
STATE ENGINEER
SALEM, OREGON

RECEIVED
JUN 16 1955
STATE ENGINEER
SALEM, OREGON



SNAKE

RIVER

O.W.F. & N.P.F.

RECEIVED
DEC 6 1955
STATE ENGINEER
SALEM, OREGON

TOWNSHIP 19 S.,

RANGE 46 E.

RECEIVED
JUN 16 1955
STATE ENGINEER
SALEM, OREGON

RECEIVED
MAY 4 1955
STATE ENGINEER
SALEM, OREGON

6

5

4

3

2

1

7

8

9

10

11

12

18

17

16

15

14

13

19

20

21

22

23

24

25

33°

35°

30°

36°

7°

39°

8°

39°

35°

38°

30

29

28

27

26

25

Owl
Ditch

31

30

29

28

27

26

25

TOWNSHIP 20 S., RANGE 46 E.

RECEIVED JUN 16 1955
 RECEIVED MAY 4 1955
 STATE ENGINEER STATE ENGINEER
 OREGON

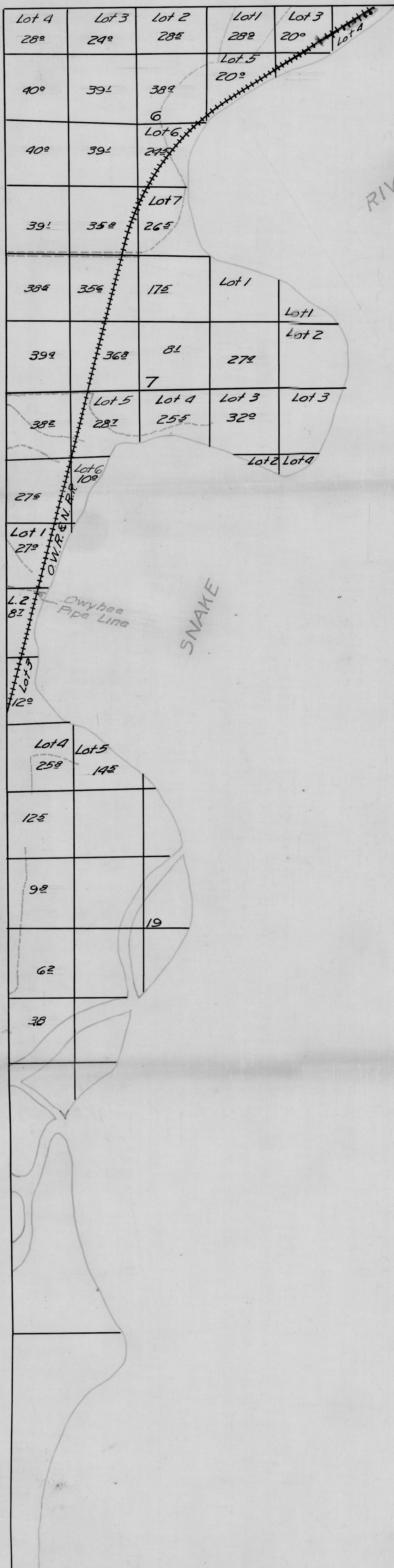


Application No. 29800
 Permit No. OREGON

TOWNSHIP 20 S. RANGE 47 E.

RECEIVED
MAY 4 1955
STATE ENGINEER
SALEM, OREGON

RECEIVED
JUN 16 1955
STATE ENGINEER
SALEM, OREGON



RECEIVED
DEC 6 1955
STATE ENGINEER
SALEM, OREGON

RECEIVED
MAY 4 1955
STATE ENGINEER
SALEM, OREGON

RECEIVED
JUN 16 1955
STATE ENGINEER
SALEM, OREGON

6 5 4 3 2 1

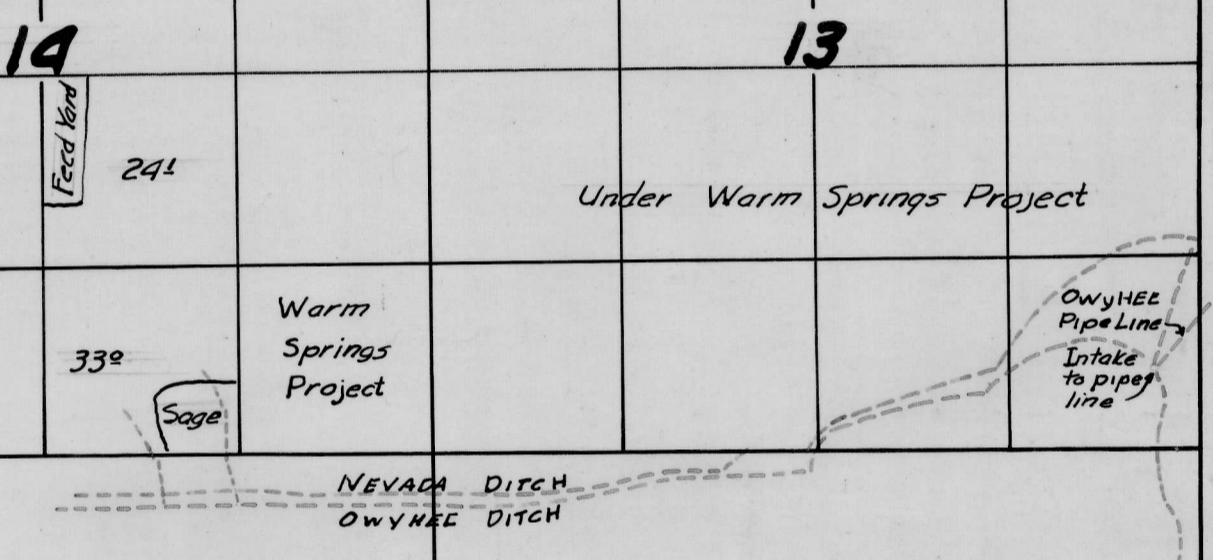
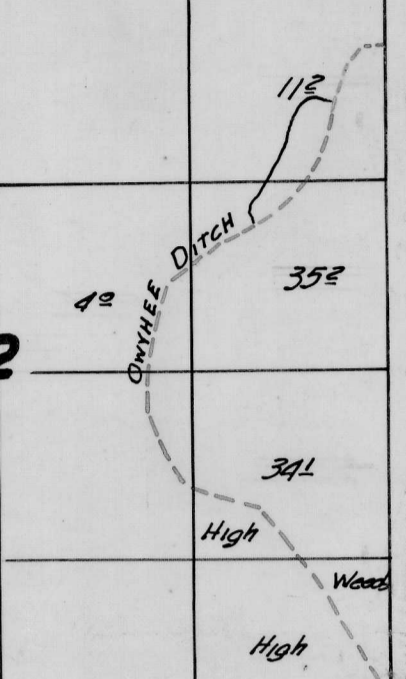
7 8 9 10 11 12

18 17 16 15 14 13

19 20 21 22 23 24

30 29 28 27 26 25

31 32 33 34 35 36



RECEIVED
DEC 4 1955
STATE ENGINEER
SALEM, OREGON
29800
Scale 1" = 1/4 Mile

