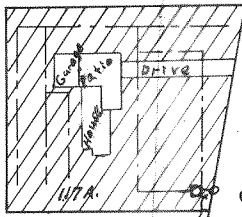


N.W. Cor
Sec 21, T₂N, R. 32.E.



NW 1/4 NW 1/4 Sec. 21
T 2N R 32 E



510° 8' W 72.7' P. to Pt.
190° E of Well
County Road

190° W.
10' to Well

App No G-281
P G-204
Scale 1" = 100'
--- Pipe Line
|||| Irrigated Area
□ Well

G-281
G-204

G-204
29775