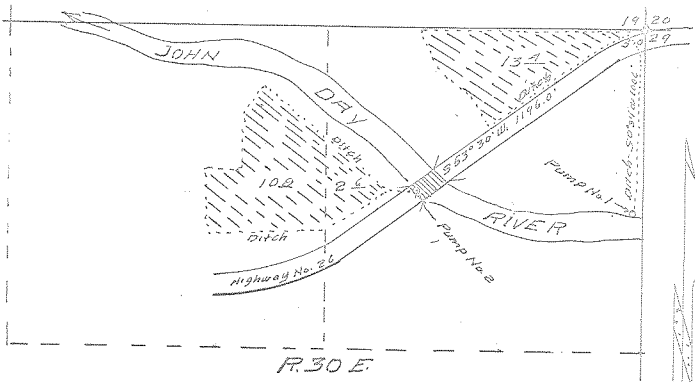


1135



R. 30 E.

Map of  
**DERROL MCKERN AUXILIARY SYSTEM**

Scale = 1 inch = 400 feet

Derrol McKern  
Appropriator

Certificate of Surveyor

I, L. E. Lucas, of John Day, Oregon, do hereby certify that this map was made from notes taken during an actual survey made by on March 24, 1956; that it correctly represents the works throughout; that the monument used is the corner common to sections 19-20-29 and 30, T. 13. S. R. 30 E. W. 11, from which pump Station No. 1 bears S. 0° 34' W. 1006.0 feet, and Station No. 2 is under southerly end of Highway Bridge, at a point which bears S. 53° 30' W. 1196.0 feet.

*L. E. Lucas*  
 Engineer N. 384.

RECEIVED  
 MAR 27 1956  
 STATE ENGINEER  
 CALLED OFFICE

Application No. 30625  
 Permit No. 24129