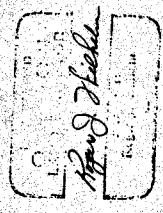
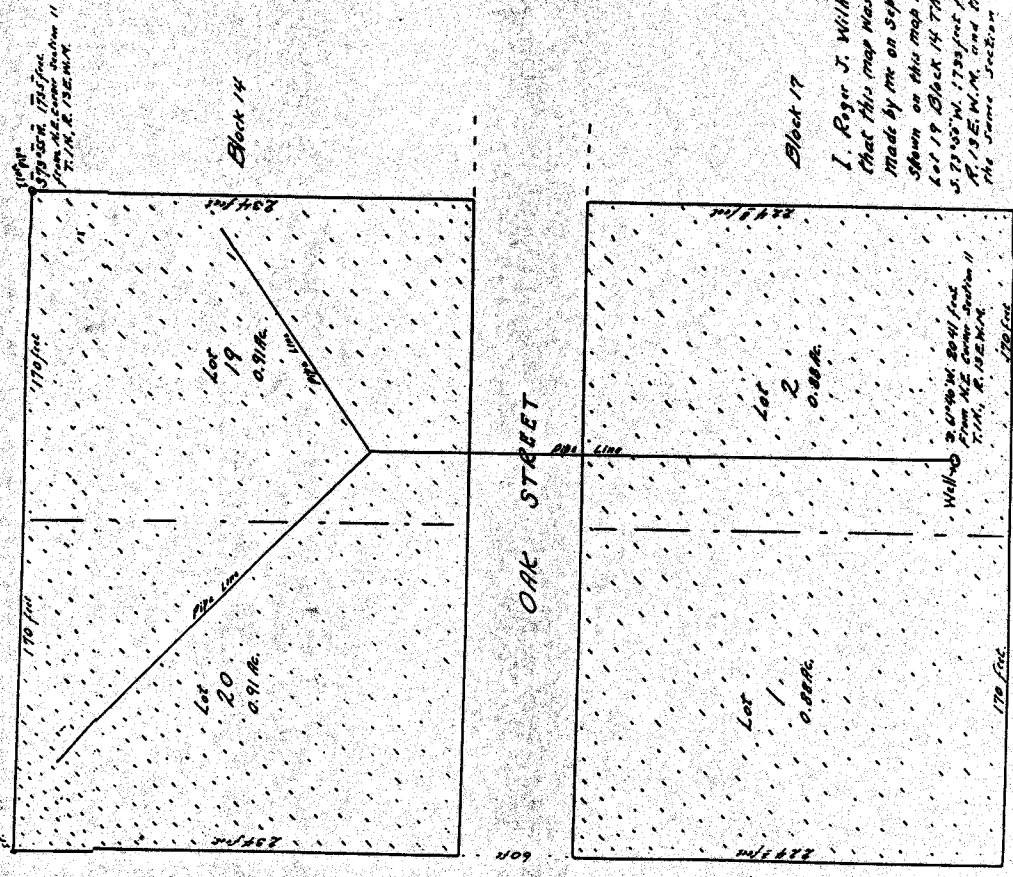


W. R. Hovey Application



I, Roger J. Wilhelm, of The Dalles, Oregon do hereby certify that this map was made from notes taken during an actual survey made by me on September 20, 1932, and that the monument shown on this map is an iron pipe located at the northeast corner of Lot 19 Block 14 Thompson's addition to the Dalles, Oregon and is 5.23 1/2" W. 1733 feet from the northeast corner of section 11, T. 14, R. 13 E. W. 4, and the well is located 3.61 1/2" W. 2041 feet from the same section corner.

Rogers J. Wilhelm

Application No. 4-589
Permit No. 2-544

East line of McVeeny section 11, T. 14, R. 13 E. W. 4
928 1/2 feet south of station line

Dashed line