

MAP TO ACCOMPANY WATER RIGHT APPLICATION
 OF
 CALVIN KRAHMER
 IN
 Sections 9 & 10, T1S, R3W, W.M.

23 March 1957

Scale: 1" = 330'

Total acreage covered by this application: 71.4

I, Herbert A. Mohr, of Hillsboro, Washington County, Oregon,
 do hereby certify that this map was made from notes taken
 during an actual survey made by me on 30 March 1957.



Under prior water right
 Number-Unknown
 (Subterranean Irrigation)

NE 1/4 SW 1/4

2.0 Ac.

SW 1/4 NW 1/4

SE 1/4 NE 1/4

0.6 Ac.

NW 1/4 SW 1/4
 29.6 Ac.

BLDS.

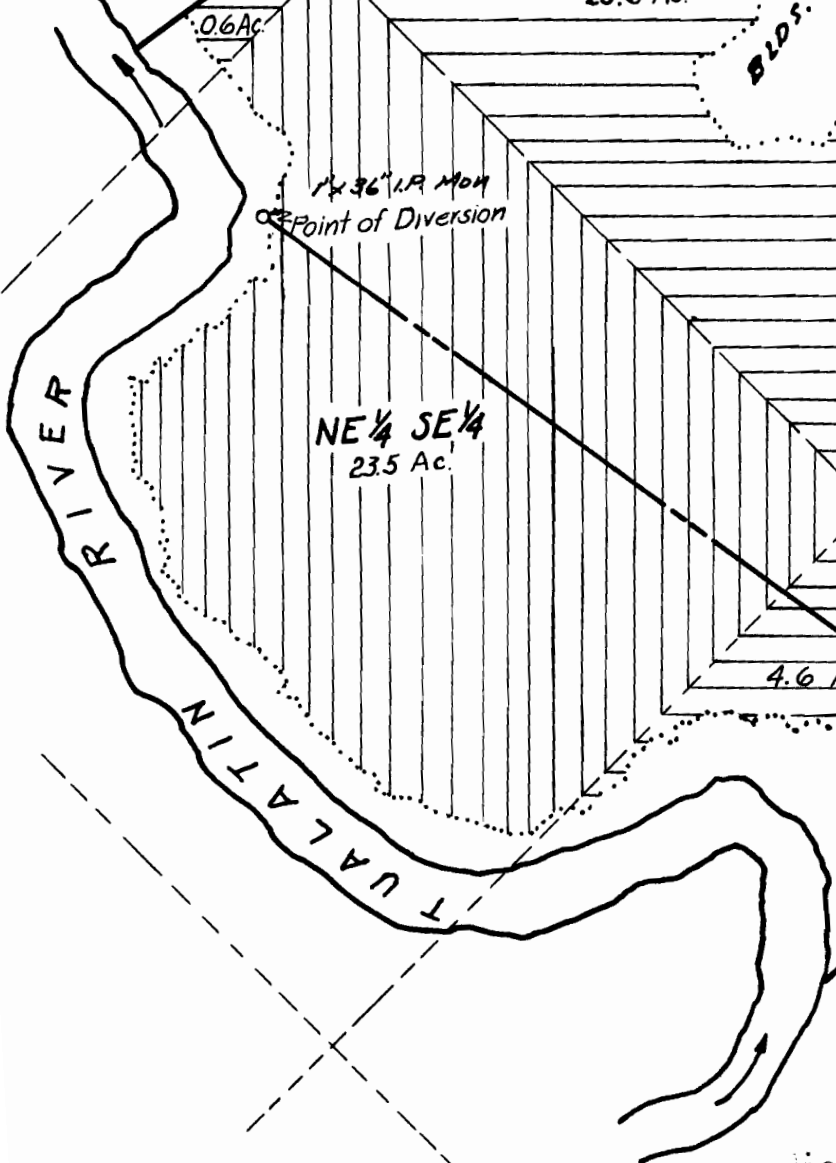
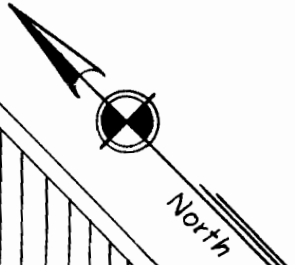
0.6 Ac.

1 x 36" IR Mon
 Point of Diversion

NE 1/4 SE 1/4
 23.5 Ac.

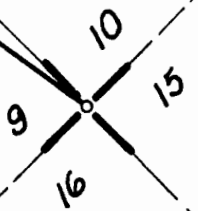
SW 1/4 SW 1/4
 10.5 Ac.

4.6 Ac.



N08°14'W 2311.70

SE 1/4 SE 1/4



Application No. 31466
 Permit No. 24810