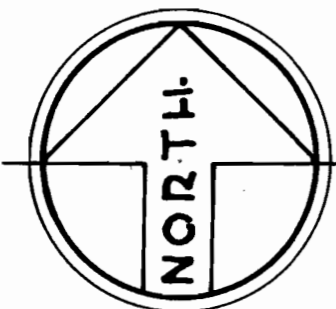


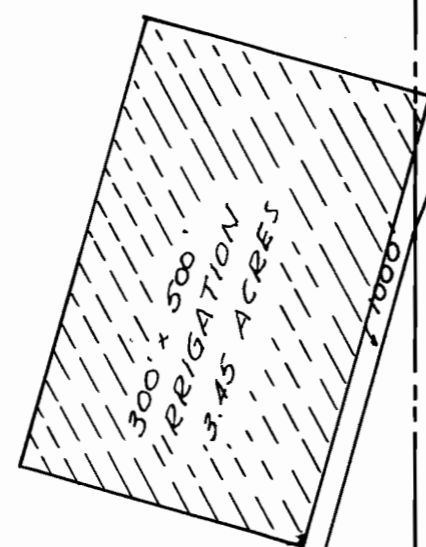
NE 1/4 SE 1/4

NW 1/4 SW 1/4



SE 1/4 SE 1/4

SW 1/4 SW 1/4



POINT OF DIVERSION
SET 2" I.P. WHICH IS 2460.65 FEET
NORTH AND 29.14 FEET
WEST OF S.E. CORNER
SECTION 34
AVAILABLE HEAD TO
2 TANKS = 100 FEET

POINT OF DIVERSION
SET 2" I.P. 1367.20 FEET
NORTH AND 602.24 FEET
EAST OF S.W. CORNER
SECTION 35 T.W.P. 35 SOUTH
RANGE 13 W.W.M.

TWO WOOD TANKS; 2000
GALLONS EACH
AVAILABLE HEAD SPRING TO
TANKS = 26.5 FEET; TANKS TO
HOUSE 75.9 FEET.

PLACE OF USE
TWO HOMES

FOUND 1" I.P. SE CORNER
SECTION 34 TWP 35S RANGE 13 W.W.M.

Application No. 31893
Permit No. 25155

WATER RIGHTS SURVEY
SECTIONS 34 AND 35 TOWNSHIP 35 SOUTH
RANGE 13 W.W.M. CURRY COUNTY, OREGON
FOR MR. FRED LOWERY
SCALE 1" = 200' AUGUST 1956

R. H. ERICLISEN CONSULTING ENGINEER
COOS BAY, OREGON

