

Map of MORRILL SPRINKLING SYSTEM

Scale 1 inch = 400 feet

George Morrill
Appropriator

RECEIVED
MAR 26 1956

STATE ENGINEER
SALEM, OREGON

RECEIVED
APR 13 1956

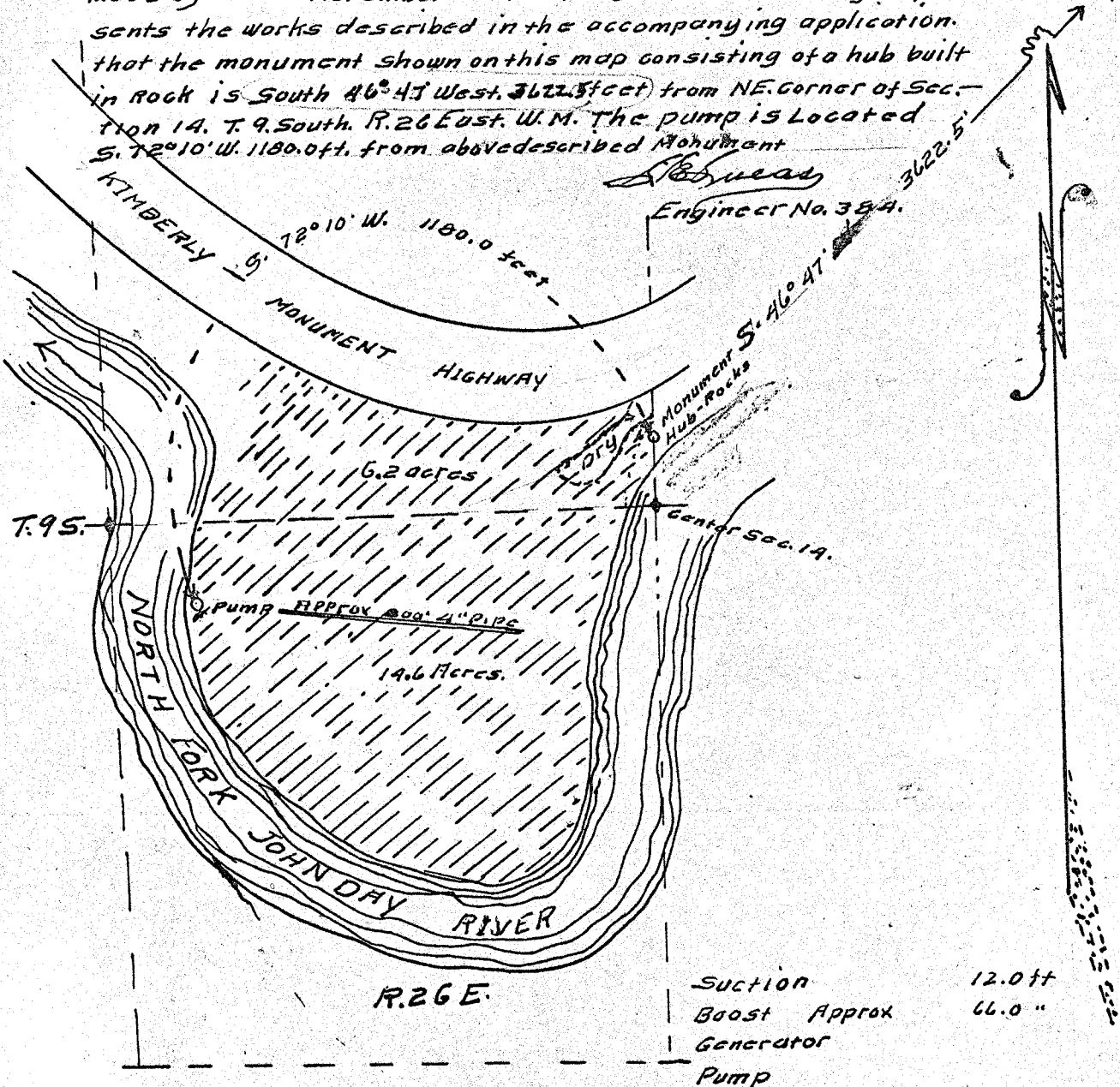
STATE ENGINEER
SALEM, OREGON

CERTIFICATE

I, L. E. Lucas, of John Day, Oregon, do hereby certify that this map was made from notes taken during an actual survey made by me on November 10, 1955, and that it correctly represents the works described in the accompanying application. that the monument shown on this map consisting of a hub built in rock is South 46° 47' West, 3622.5 feet from NE. corner of Section 14, T. 9. South, R. 26 East, W. M. The pump is located S. 72° 10' W. 1180.0 ft. from abovescribed Monument

11/12
14/13

L. E. Lucas
Engineer No. 384.



Suction	12.0 ft
Boost Approx	66.0 "
Generator	
Pump	

Application No. 30622
Permit No. 24126

5740