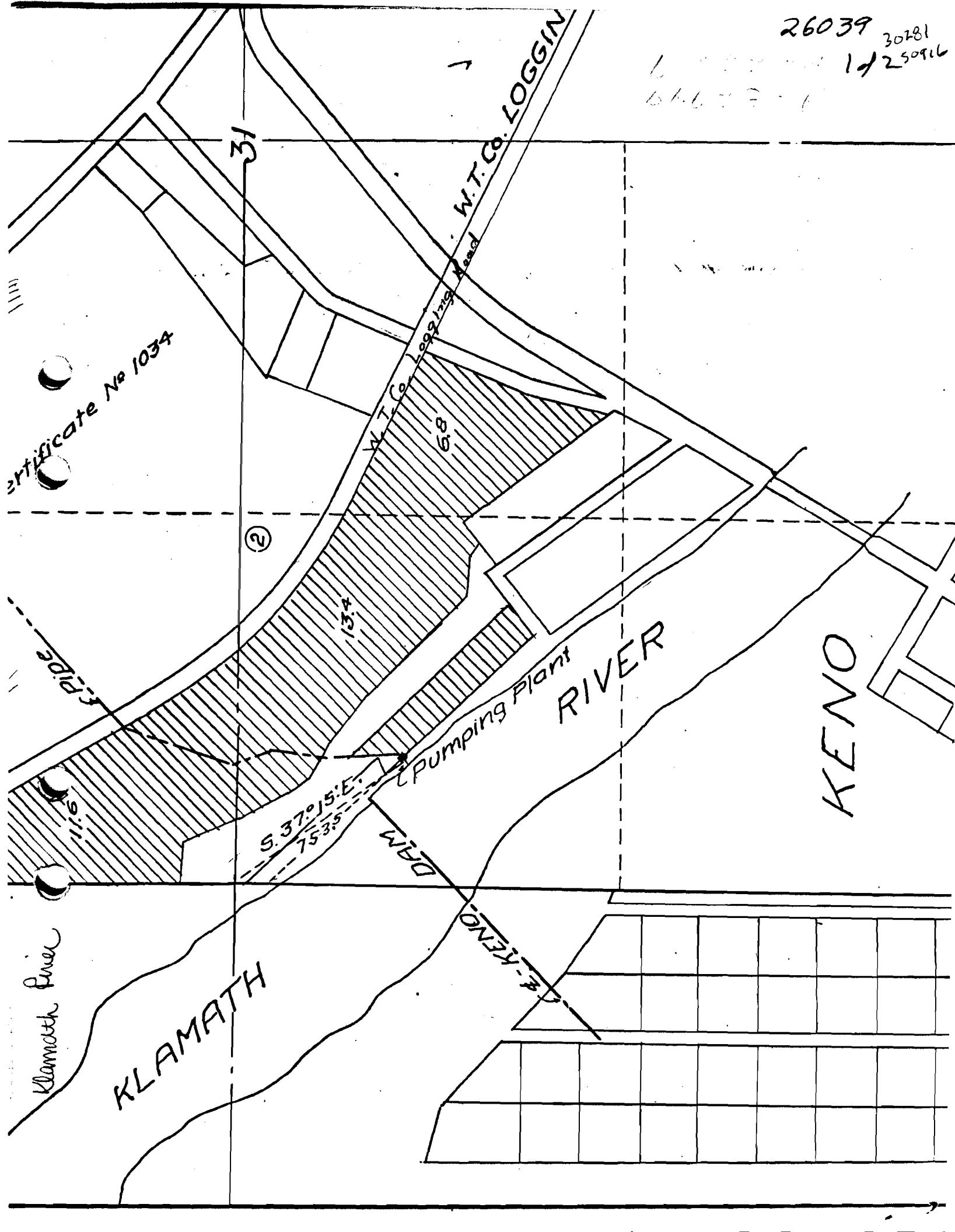


26039 30781  
17250916



Certificate No 1034

31

2

6.8

13.4

S. 37° 15' E.  
753.5

W.T. CO. LOGGIN' Road

DAM

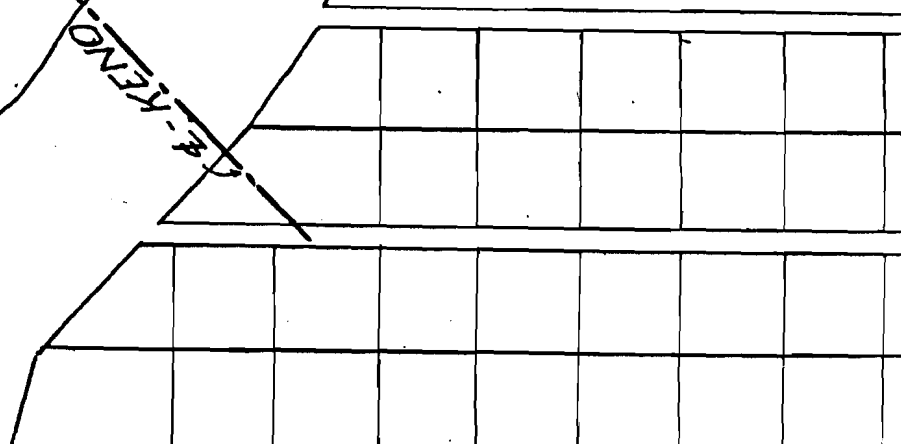
PUMPING Plant

RIVER

KENDO

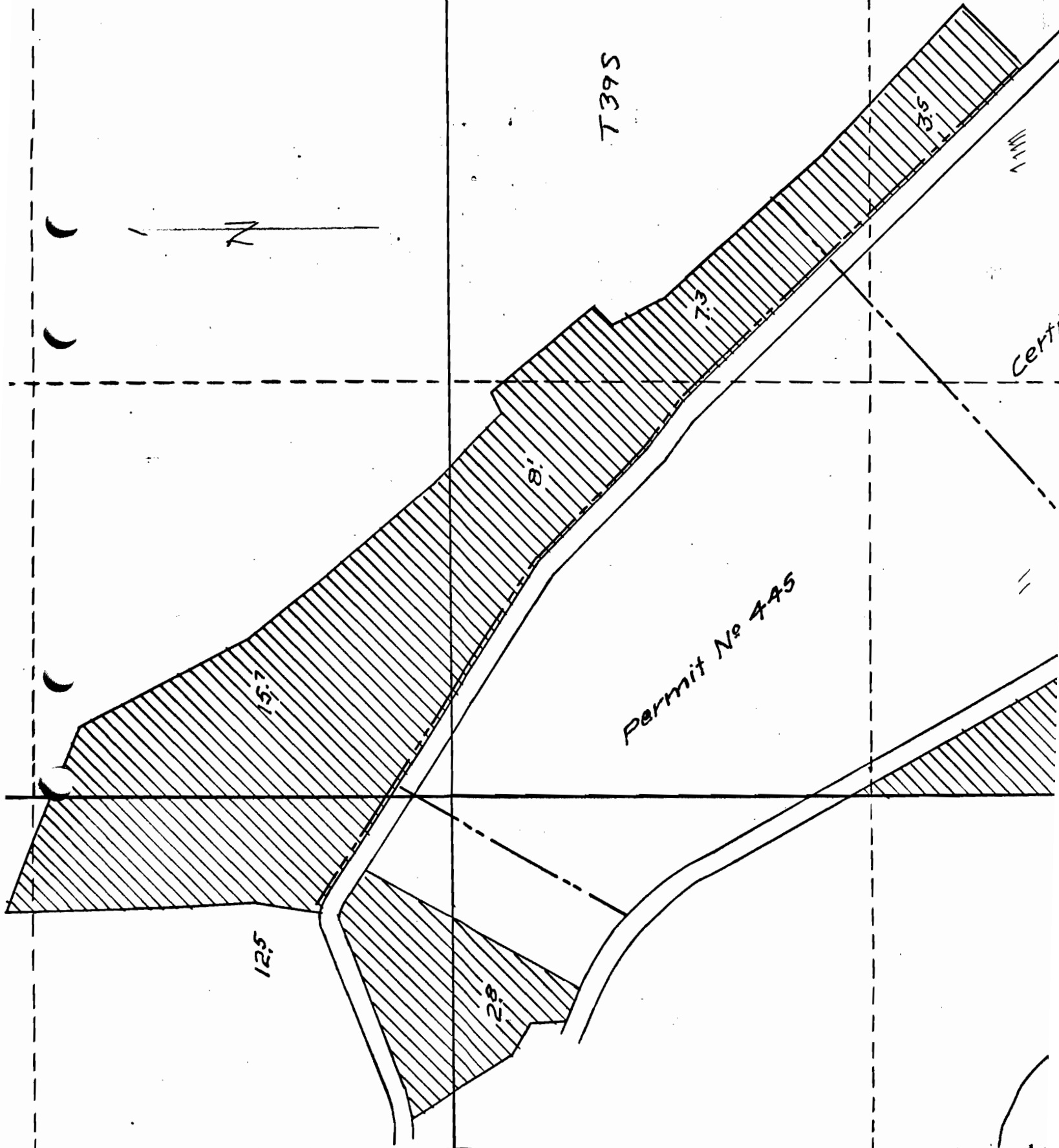
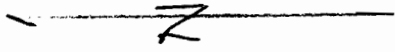
Klamath River

KLAMATH



26039  
2 1/2

7395



12.5'

15.7'

8'

7.3'

3.5'

Permit No 445

cert

7395