

RECEIVED
L. J. JONES
COUNTY ENGINEER
2-16-59

W.R. 698

CLARENCE G. & GENEVA ROGERS

Sec. 24, T.12 S., R.2 W., W.M.
Linn County, Oregon
Scale: 1"=200' June 16, 1959

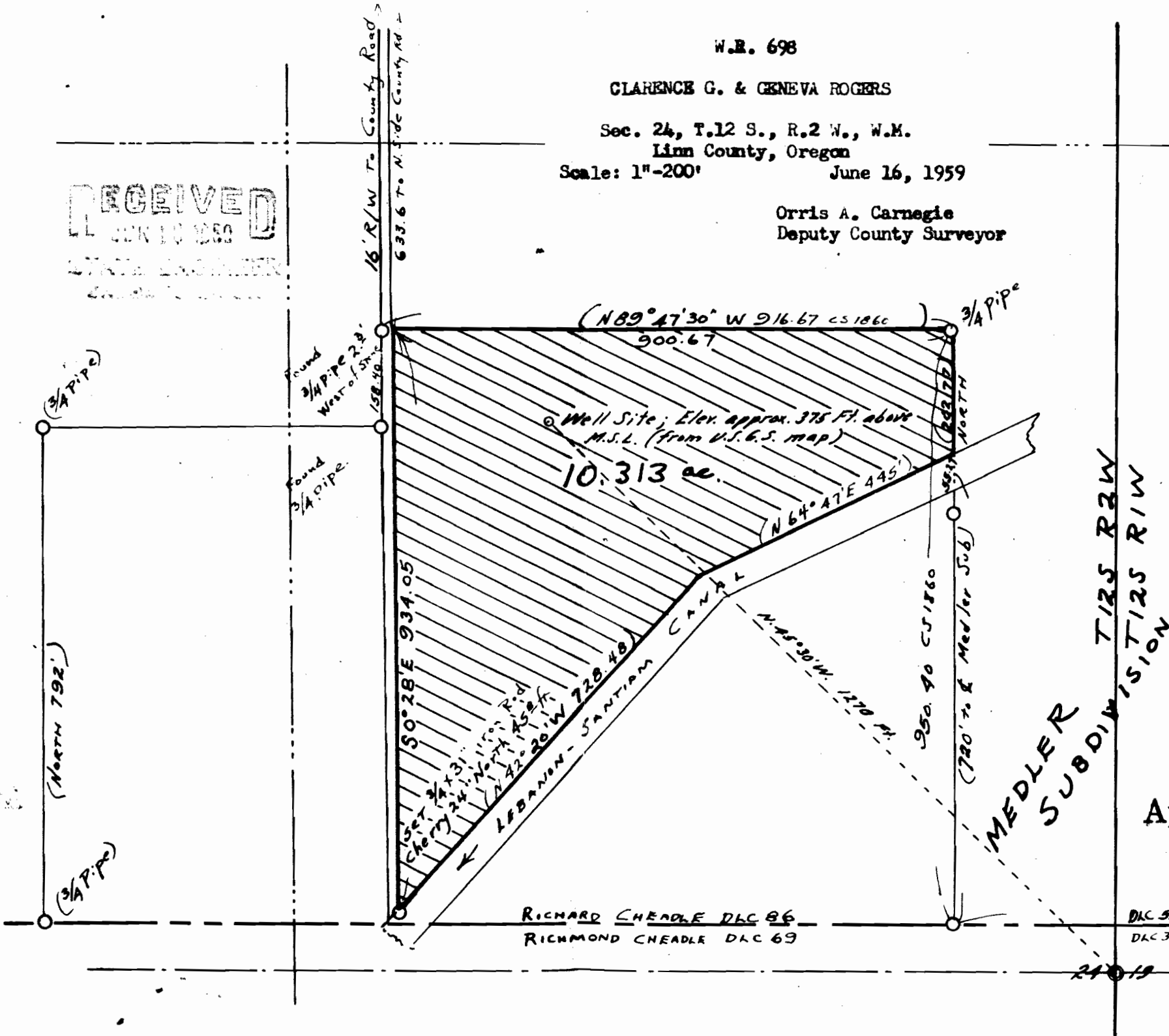
Orris A. Carnegie
Deputy County Surveyor

C. S. 5574

FRED WHITFIELD
SEC. 24, T.12 S., R.2 W.

FEB. 16, 1957
SCALE 1" = 200'

BERT W. UDELL
R.P.E. #2301



Application No. G-1506
Permit No. G-1377

RICHARD CHEADLE DLC 86
RICHMOND CHEADLE DLC 69

DLC 55 3129.73
DLC 38

STONK.
SE Gr.
DLC 55

Printed & Filed 2-4-57