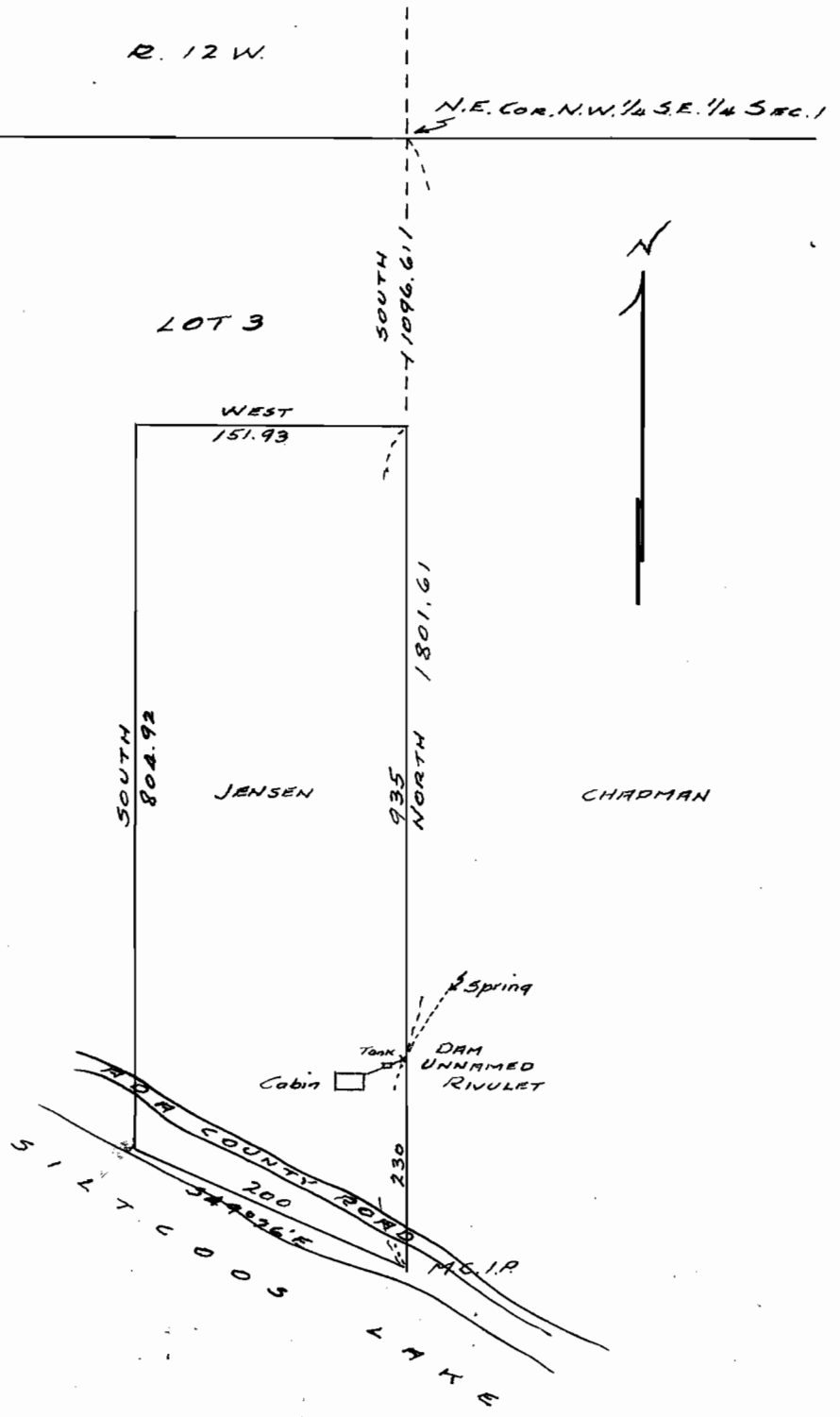


R. 12 W.

N.E. COR. N.W. 1/4 S.E. 1/4 SEC. 1

REGISTERED PROFESSIONAL
ENGINEER
STATE ENGINEER
W.M. J. BRAYTON

T.
20
S.



SURVEY

LUHR JENSEN

LOT 3. SEC. 1 - T. 20 S. R. 12 W. W. M.

DOUGLAS COUNTY

Scale 1" = 200' Jan. '60.



Application No. 33560
Permit No. 26553