

0.55 Acres
266.36'
12° C.L.
Δ = 24°
T = 102.66'

330.00'
61.77' East 808.13'
Set I.P.
Fd. I.P. @ S.W. Cor.
David Mc. Donald D.L.C.

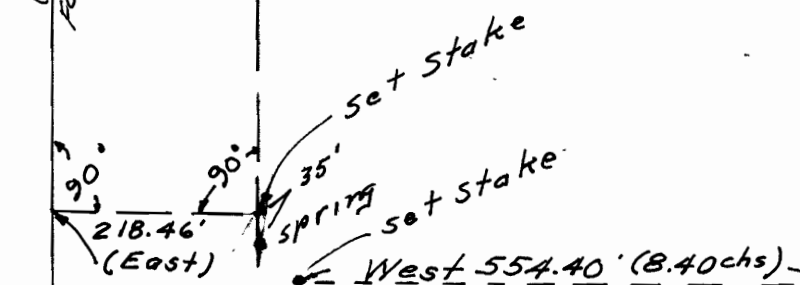
U Set I.P.
Fd. Stone & I.P. N.W.
Corner Smith D.L.C.



29.46 Acs.

Dead
(North 1782.00')
Fd. NO. 19'E-1526.00'

South 1633.37'
West line P.E. Smith D.L.C. #45
South 1179.12' (17.87chs)



522.72' (North)
Set I.P.
N82°30'W-823.62'

Set I.P.

Creek
99.00'
1/4 Corner Set I.P.
Set I.P. on S'y Extension
of old fence



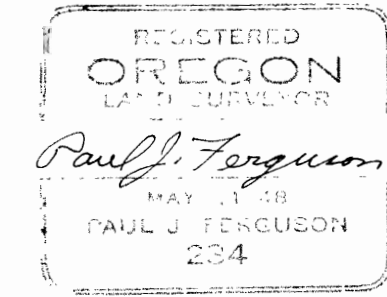
Stake #1 - 7.92 chains
North & 3.31chs East
of 1/4 corner on West
line section 18.

41'
Stake #2
Spring

Stake #2 - 17.87 chains
South & 8.40 chains West
of the Northwest corner
of P.E. Smith Donation
Land Claim, in Polk Co.,
Oregon.

Detail

SURVEY FOR
MAP TO ACCOMPANY WATER RIGHTS APPLICATION OF
ROY JOHNS - FOR DOMESTIC USE - FROM SPRINGS.
IN SEC. 18, T6S, R3W
POLK, COUNTY, OREGON
BY P.J. FERGUSON - OFFICE OF
G.R. BOATWRIGHT ENGINEER
SCALE 1" = 200' 7-07-1959



Application No. 33219
Permit No. 26261