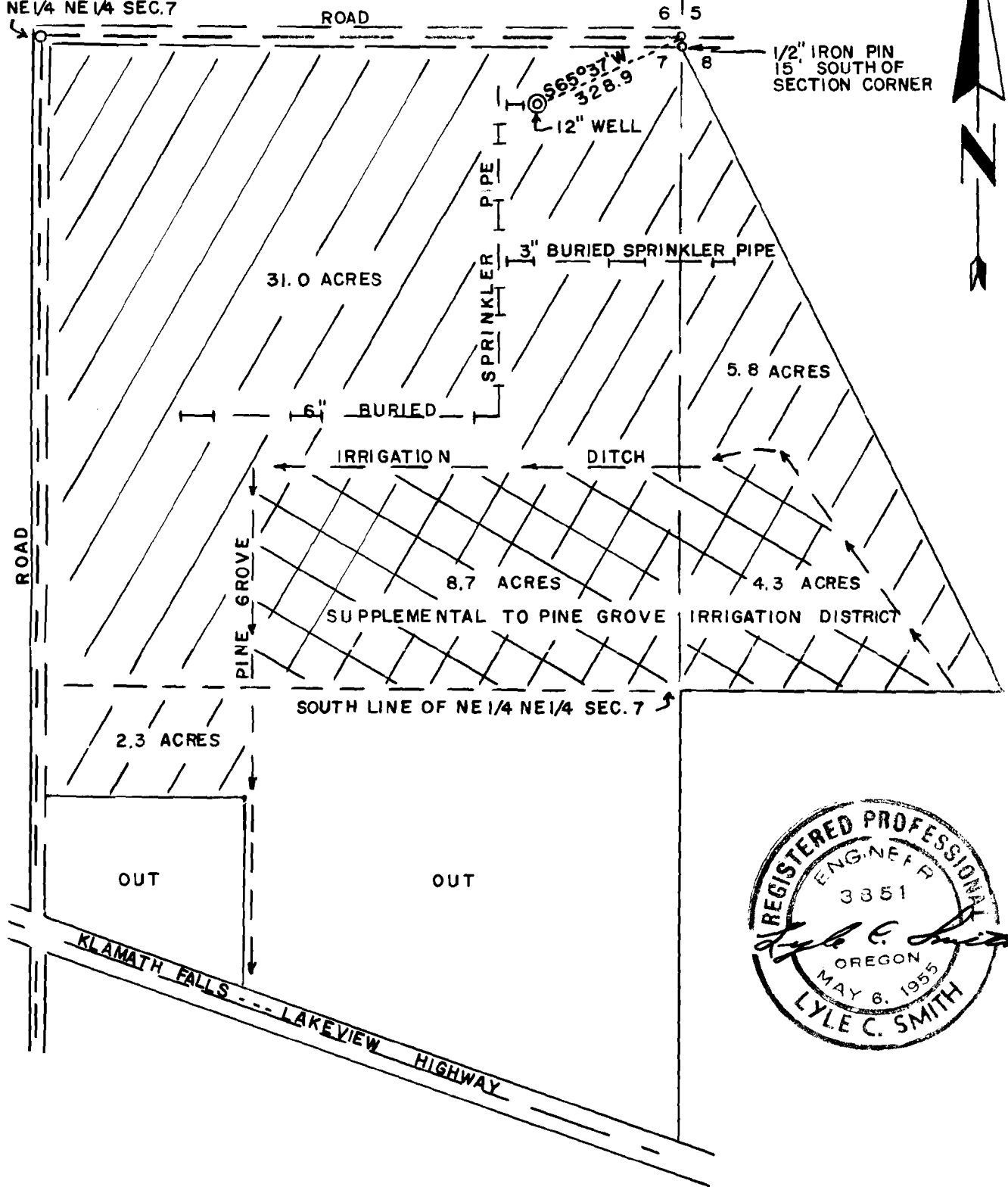


MAP TO ACCOMPANY WATER APPLICATION
 OF DR. W.F. DEAN, SITUATED IN THE E 1/2
 NE 1/4 OF SECTION 7 AND THE NW 1/4
 NW 1/4 OF SECTION 8, T39S, R10EWM,
 KLAMATH COUNTY, OREGON.

NW CORNER
 NE 1/4 NE 1/4 SEC. 7

1/2" IRON PIN
 15' SOUTH OF
 SECTION CORNER



I, LYLE C. SMITH, DO HEREBY CERTIFY THAT
 THIS MAP WAS MADE FROM NOTES TAKEN
 DURING AN ACTUAL SURVEY MADE BY ME
 ON 3-7-58 AND THAT THE MONUMENT SHOWN
 CONSISTS OF A 1/2" IRON PIN LOCATED
 15 FEET SOUTH OF THE NE CORNER OF
 SECTION 7, T 39 S, R 10 EWM.

Lyle C. Smith

Appd. G-2028

Permit No. G-1939

SMITH & WESTVOLD
ENGINEERING & SURVEYING
KLAMATH FALLS, OREGON

SURVEYED FOR	DR. W. F. DEAN	3-7-58
MAPPED BY	L. C. S.	8-29-61
CHECKED BY	J. S. W.	8-30-61

SCALE 1" = 300'