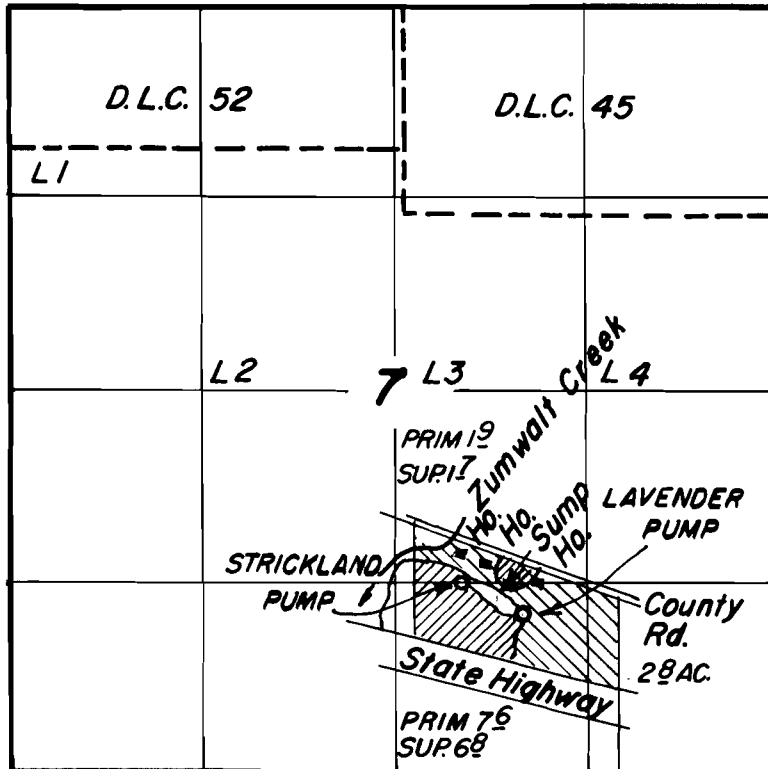


T.9S.R.1E.W.M



Stone 35.03 Chains west of
S.E. Cor. of Zumwalt D.L.C.

FINAL PROOF SURVEY
UNDER

 Primary

 Supplementary

Application No. G-2039 Permit No. G-1874
IN NAME OF

William Lavender & Gordon Strickland

Surveyed Dec 5 1962, by Floyd L. Sigmund