

RECEIVED
 NOV 17 1954
 STATE ENGINEER
 S. W. ...

LAND DESCRIPTION

NE 1/4 NW 1/4	7.0 Acres
NW 1/4 NE 1/4	8.1
NE 1/4 NE 1/4	0.6
SE 1/4 NW 1/4	1.4
SW 1/4 NE 1/4	16.8
NW 1/4 SE 1/4	0.4
Total	34.3 Acres

T.
3
N.

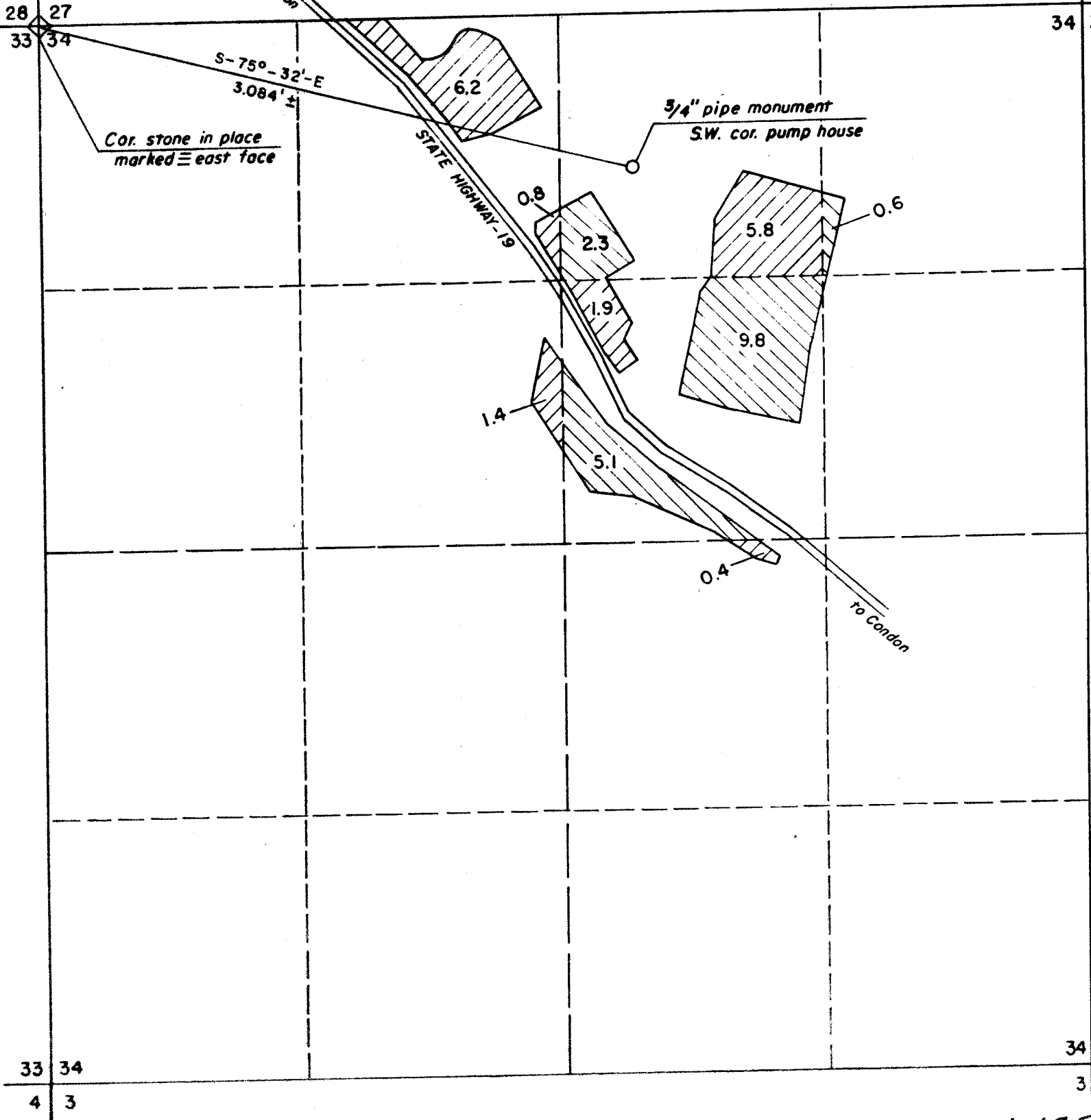


Map prepared from field notes taken on actual survey by the Soil Conservation Service. Notes on file at the S.C.S. office, Condon, Gilliam Co., Ore.

WATER APPLICATION MAP E. M. HULDEN-OWNER-ARLINGTON, ORE. GILLIAM CO. SOIL CONSERVATION DISTRICT, OREGON				
U. S. DEPARTMENT OF AGRICULTURE SOIL CONSERVATION SERVICE				
RECOMMENDED		W. R. STANLEY		
ENGINEERING APPROVAL				
TITLE				
COMPILED	TRACED	CHECKED	DATE	DRAWING NO.
R.E.	W.R.S.	W.R.S.	Nov '54	7-N-14902

Application No. U-685
 Permit No. U-675
 Certif. 31153

R. 21 E. W.M.



Application No. U-685
Permit No. U-675
Certif. 31153