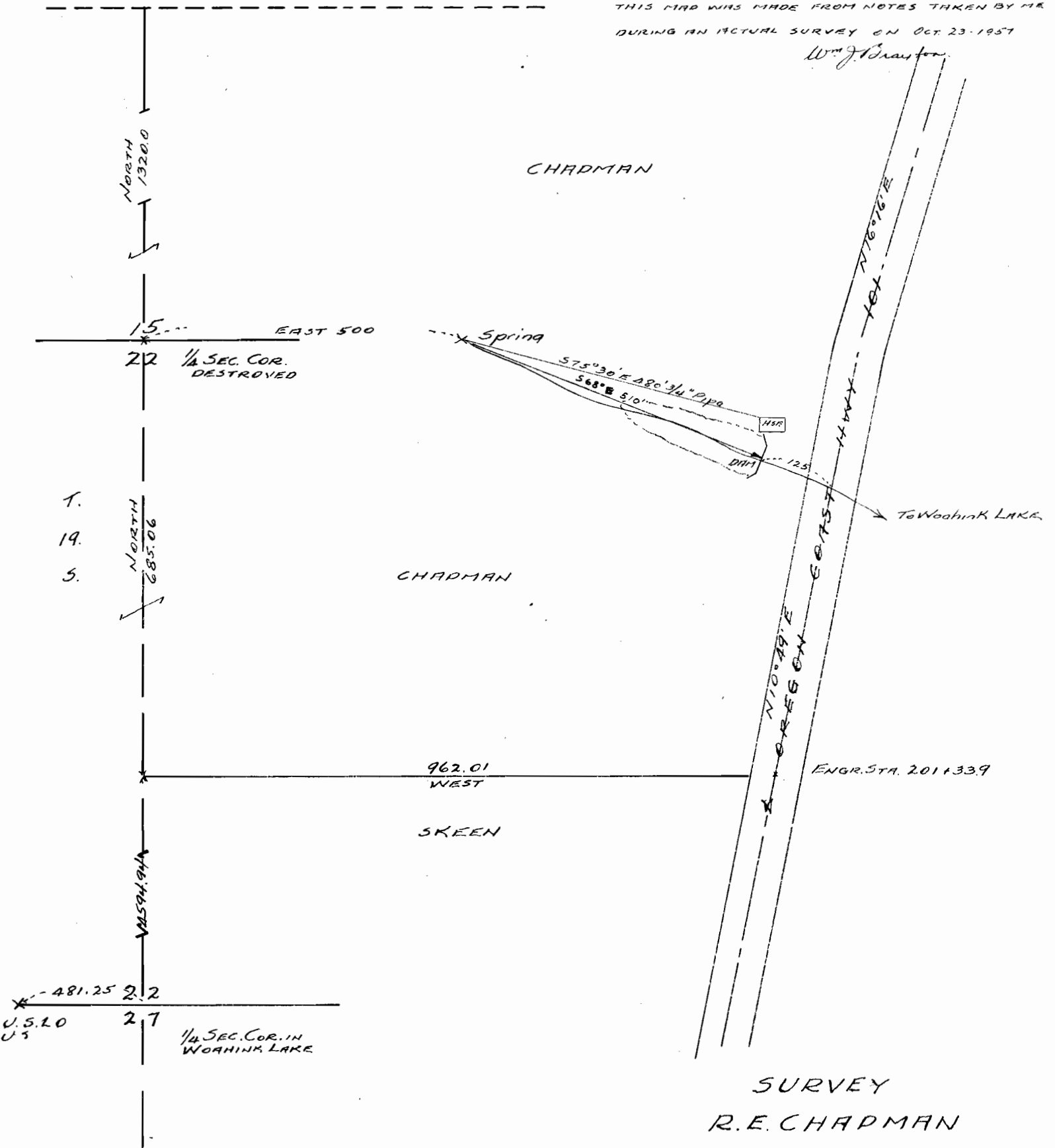


R. 12 W.

I, Wm. J. BRAYTON OF FLORENCE, ORE., CERTIFY THIS MAP WAS MADE FROM NOTES TAKEN BY ME DURING AN ACTUAL SURVEY ON OCT. 23, 1957

Wm. J. Brayton



SURVEY

R. E. CHADMAN

SEC. 15 & 22 - T. 19 S. R. 12 W. W. M.

LANE COUNTY

Scale 1" = 200' Oct. '57.

Application No. R-31989 & 31990
Permit No. R-2103 & 25244

