



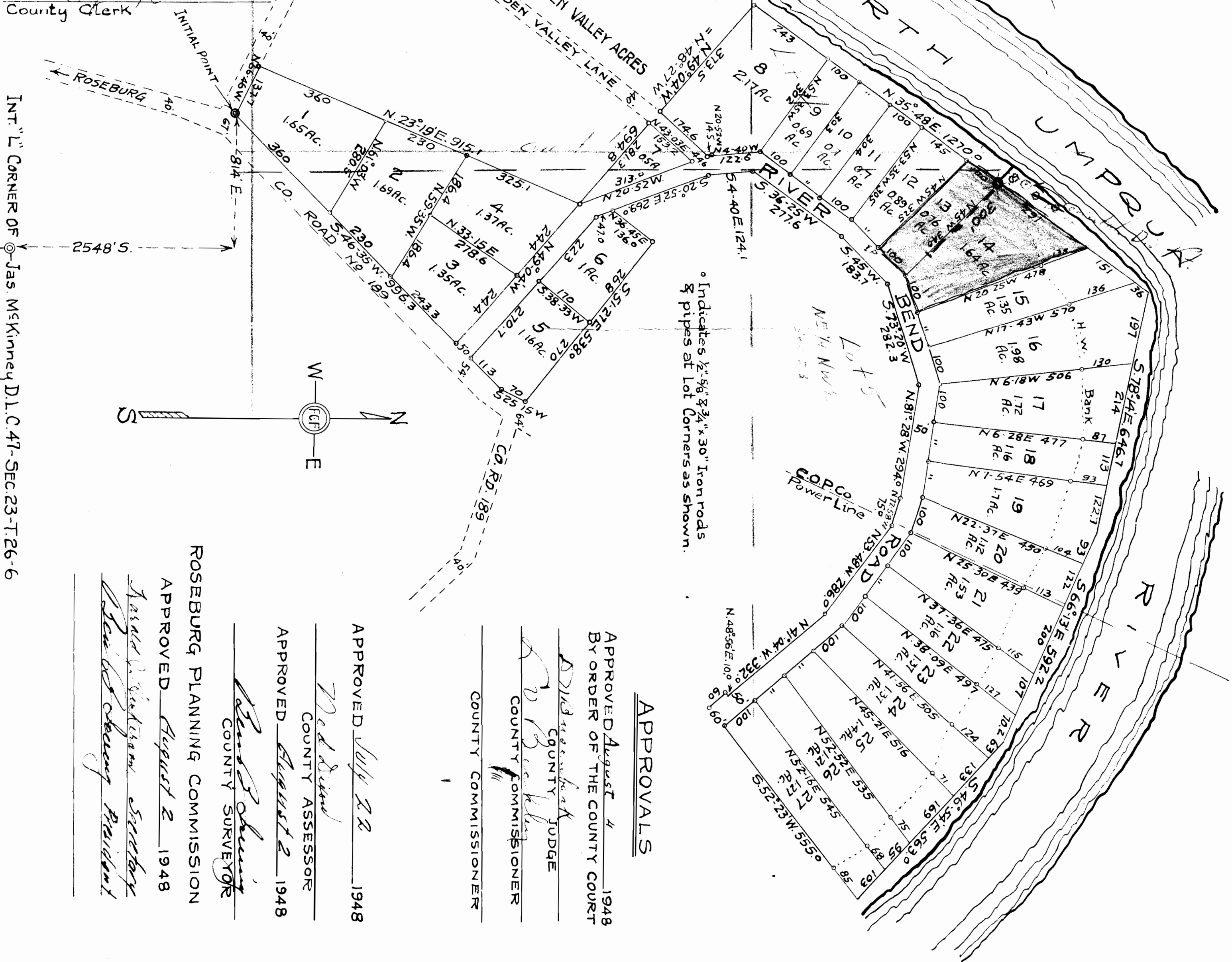
State of Oregon } 55
County of Douglas }

I, Floyd C. Frear being duly sworn depose and say that I am the surveyor who surveyed and prepared the plat of RIVER BEND ACRES and that the annexed tracing is an exact copy of the final plat thereof.

Floyd C. Frear

Subscribed and sworn to before me this 23 day of July 1948

Ray Agre
County Clerk



INT. "L" CORNER OF Jas. McKinney D.L.C. 47-SEC. 23-T. 26-6

Indicates 1/2" x 3/8" & 3/4" x 30" Iron rods & pipes at Lot Corners as shown.

APPROVALS

APPROVED August 4 1948
BY ORDER OF THE COUNTY COURT

Doris Salven
COUNTY JUDGE
Doris Salven
COUNTY COMMISSIONER

COUNTY COMMISSIONER

APPROVED July 28 1948

Ray Agre
COUNTY ASSESSOR

APPROVED August 2 1948

Ray Agre
COUNTY SURVEYOR

ROSEBURG PLANNING COMMISSION

APPROVED August 2 1948

James J. Wickham Secretary
Paul G. Cheung President

RIVER BEND ACRES

SECTION 23 - Twp. 26 S. - R. 6 W. - W. M.
DOUGLAS COUNTY, OREGON

Scale 1 inch = 200 ft.

CERTIFICATE OF SURVEYOR

I, Floyd C. Frear, being first duly sworn depose and say that I have surveyed and marked with proper monuments the lands shown on the annexed plat of which the following is a true and correct description to wit:-

Beginning at a 2 inch by 36 inch iron pipe on the West right of way line of County Road No 189 and from which the Interior "L" Corner of James McKinney D.L.C. No 47 in Section 23 - T. 26 S. - R. 6 W. - Douglas County, Oregon bears 814 feet East and 2548 ft. South, Thence N. 66° 46' W. 137.17 ft. to a 1" x 30" I. pipe, thence N. 23° 19' E. 915.1 ft. to a 1" x 36" I. pipe, thence N. 49° 04' W. 694.8 ft. to a 3/4" x 30" I. pipe, thence N. 35° 48' E. 1270.0 ft., thence S. 78° 14' E. 646.7 ft., thence S. 66° 13' E. 592.2 ft., thence S. 46° 54' E. 563.0 ft., thence S. 52° 23' W. 615.0 ft. to a 1" x 36" I. pipe, thence N. 4° 04' W. 600.0 ft. to a 1" x 36" I. pipe, thence N. 48° 56' E. 100.0 ft., thence N. 4° 04' W. 332.0 ft. to a 1" x 36" I. pipe, thence N. 53° 48' W. 286.0 ft. to a 1" x 30" I. pipe, thence N. 72° 58' W. 75.0 ft. to a 3/4" x 30" I. pipe, thence N. 81° 28' W. 294.0 ft. to a 1" x 30" I. pipe, thence S. 73° 20' W. 282.3 ft. to a 1" x 30" I. pipe, thence S. 45° 00' W. 183.7 ft. to a 1" x 30" I. pipe, thence S. 36° 25' W. 217.6 ft. to a 1" x 30" I. pipe, thence S. 4° 40' E. 124.1 ft. to a 1" x 30" I. pipe, thence S. 20° 52' E. 269.0 ft. to a 1" x 30" I. pipe, thence N. 36° 45' E. 136.0 ft. to a 1" x 30" I. pipe, thence S. 51° 27' E. 52.0 ft. to a 1" x 30" I. pipe, thence S. 25° 15' W. 70.0 ft. to a 1" x 30" I. pipe, thence S. 46° 35' W. 996.3 ft. to the place of beginning and containing 3777 acres of land more or less.

Floyd C. Frear REG. ENGR. NO. 352

ACKNOWLEDGEMENT

State of Oregon } 55
County of Douglas }
On the 19th day of July 1948
appeared DORIS SALVEN a single woman to me personally known, who being duly sworn did say that she is the owner of the lands shown on the annexed plat and acknowledged the adjacent instrument was her free act and deed.

IN TESTIMONY WHEREOF I hereunto set my hand and seal the day and year above written.

Ray Agre
COUNTY CLERK

DEDICATION

KNOW ALL MEN BY THESE PRESENTS: That I, DORIS SALVEN owner of the lands shown on the annexed plat, have caused the same to be surveyed and platted as and by the name of RIVER BEND ACRES and I do hereby dedicate to the public use forever the roads shown thereon

Doris Salven

FILED August 4th 1948
Ray Agre
COUNTY CLERK

Application No. 33662
Permit No. 26595

REGISTERED PROFESSIONAL ENGINEER
352
FLOYD C. FREAR

OREGON
DEC 8 1916
FLOYD C. FREAR

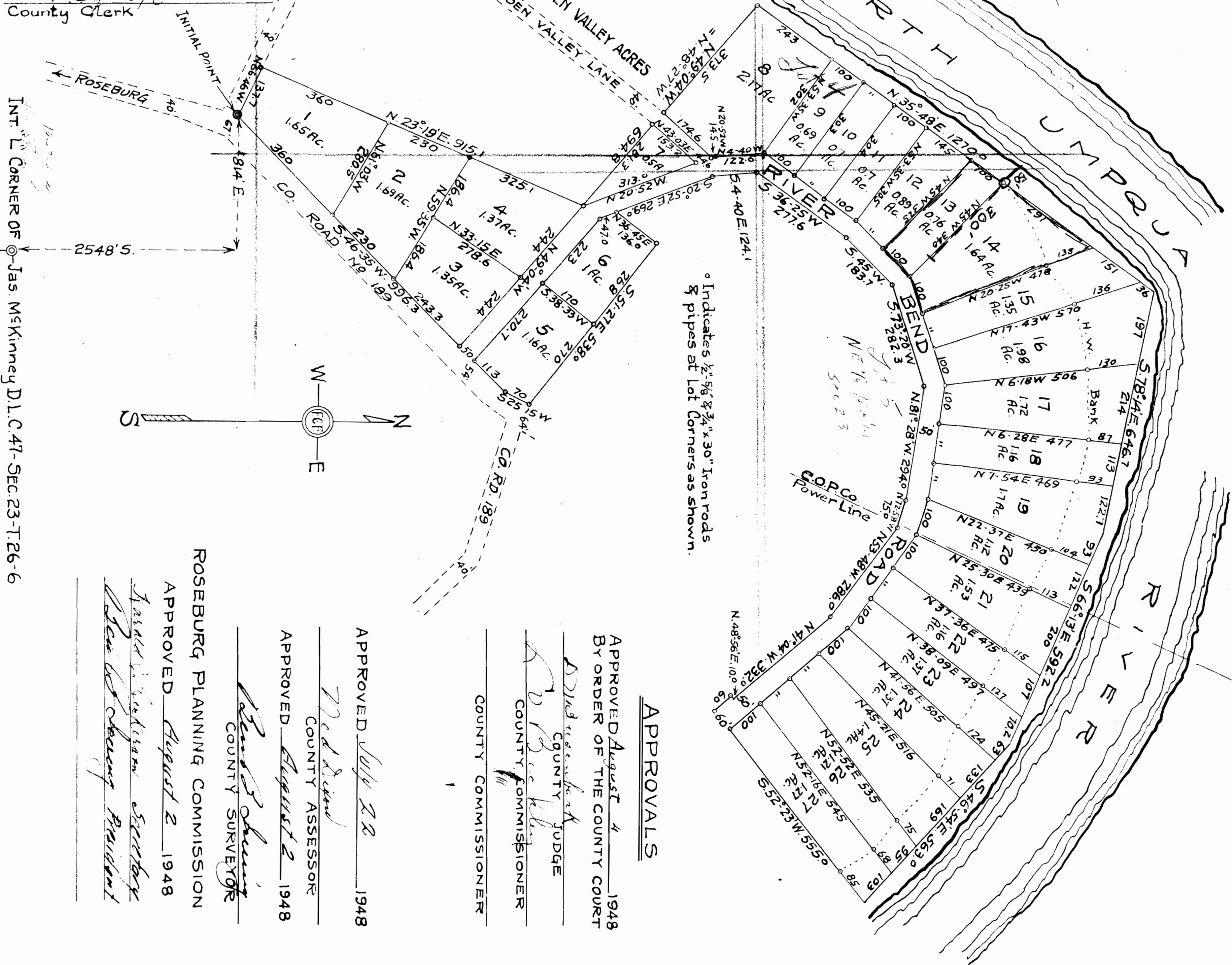
State of Oregon } SS
County of Douglas }

I, Floyd C. Frear being duly sworn depose and say that I am the Surveyor who surveyed and prepared the plat of RIVER BEND ACRES and that the annexed tracing is an exact copy of the final plat thereof.

Floyd C. Frear

Subscribed and sworn to before me this 23 day of July 1948

Ray Ugee
County Clerk



APPROVALS

APPROVED August 4 1948
BY ORDER OF THE COUNTY COURT

Doris Salven
COUNTY JUDGE

W. J. Kinney
COUNTY COMMISSIONER

APPROVED July 22 1948
COUNTY ASSESSOR

W. J. Kinney
COUNTY ASSESSOR

APPROVED August 2 1948
COUNTY SURVEYOR

ROSEBURG PLANNING COMMISSION
APPROVED August 2 1948

James M. Kinney
Roseburg Planning Commission Secretary

RIVER BEND ACRES

SECTION 23 - Twp. 26 S. - R. 6 W. - W. M.
DOUGLAS COUNTY, OREGON

Scale 1 inch = 200 ft.

CERTIFICATE OF SURVEYOR

I, Floyd C. Frear, being first duly sworn depose and say that I have surveyed and marked with proper monuments the lands shown on the annexed plat of which the following is a true and correct description to wit:-

Beginning at a 2 inch by 36 inch iron pipe on the West right of way line of County Road No 189 and from which the Interior "L" Corner of James McKinney D.L.C. No 47 in Section 23 - T26S-R6W-WM-Douglas County Oregon bears 814 feet East and 2548 ft. South, thence N66°46'W 137.7ft. to a 1"x30" I pipe, thence N23°19'E 915.1 ft. to a 1"x36" I pipe, thence N49°04'W 694.8 ft. to a 3/4"x30" I pipe, thence N35°48'E 1270.0 ft., thence S. 46°54'E 563.0 ft., thence S. 52°23'W 615.0 ft. to a 1"x36" I pipe, thence N. 41°04'W 332.0 ft. to a 1"x36" I pipe, thence N. 48°56'E 109.1 ft., thence N. 41°04'W 332.0 ft. to a 1"x36" I pipe, thence N. 53°48'W 286.0 ft. to a 1"x30" I pipe, thence N. 81°28'W 294.0 ft. to a 1"x30" I pipe, thence S. 73°20'W 282.3 ft. to a 1"x30" I pipe, thence S. 45°06'W 183.7 ft. to a 1"x30" I pipe, thence S. 36°25'W 217.6 ft. to a 1"x30" I pipe, thence S. 4°40'E 124.1 ft. to a 1"x30" I pipe, thence S. 20°52'E 269.0 ft. to a 1"x30" I pipe, thence N. 36°45'E 136.0 ft. to a 1"x30" I pipe, thence S. 51°27'E 538.0 ft. to a 1"x30" I pipe, thence S. 25°15'W 70.0 ft. to a 1"x30" I pipe, thence S. 46°35'W 99.6 ft. to the place of beginning and containing 37.77 acres of land more or less.

Floyd C. Frear REG-ENGR. No 352

ACKNOWLEDGEMENT

State of Oregon } SS
County of Douglas }
On the 19th day of July 1948
appeared DORIS SALVEN a single woman to me personally known, who being duly sworn did say that she is the owner of the lands shown on the annexed plat and acknowledged the adjacent instrument was her free act and deed.
IN TESTIMONY WHEREOF I hereunto set my hand and seal the day and year above written.

Ray Ugee
COUNTY CLERK

DEDICATION

KNOW ALL MEN BY THESE PRESENTS: That I, DORIS SALVEN owner of the lands shown on the annexed plat, have caused the same to be surveyed and platted as and by the name of RIVER BEND ACRES and I do hereby dedicate to the public use forever the roads shown thereon.

Doris Salven

Application No. 33662
Permit No. 26595
FILED August 4th 1948
Ray Ugee
COUNTY CLERK

INT. L. CORNER OF Jas McKinney D.L.C. 47 - Sec. 23 - T. 26 - 6